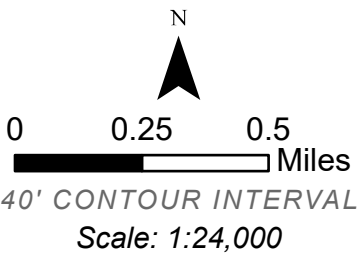
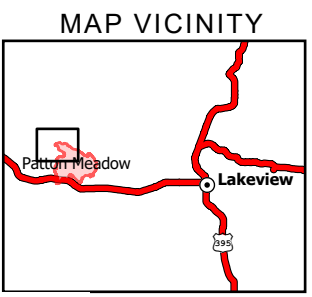


IAP
Patton Meadow
ORFWF210419
08/20/2021 Night
 Fox Cpx: 8304 acres at 08/18/21 @ 18:40 hrs
 Patton Meadow: 7,480 acres
 Willow Valley: 824 acres

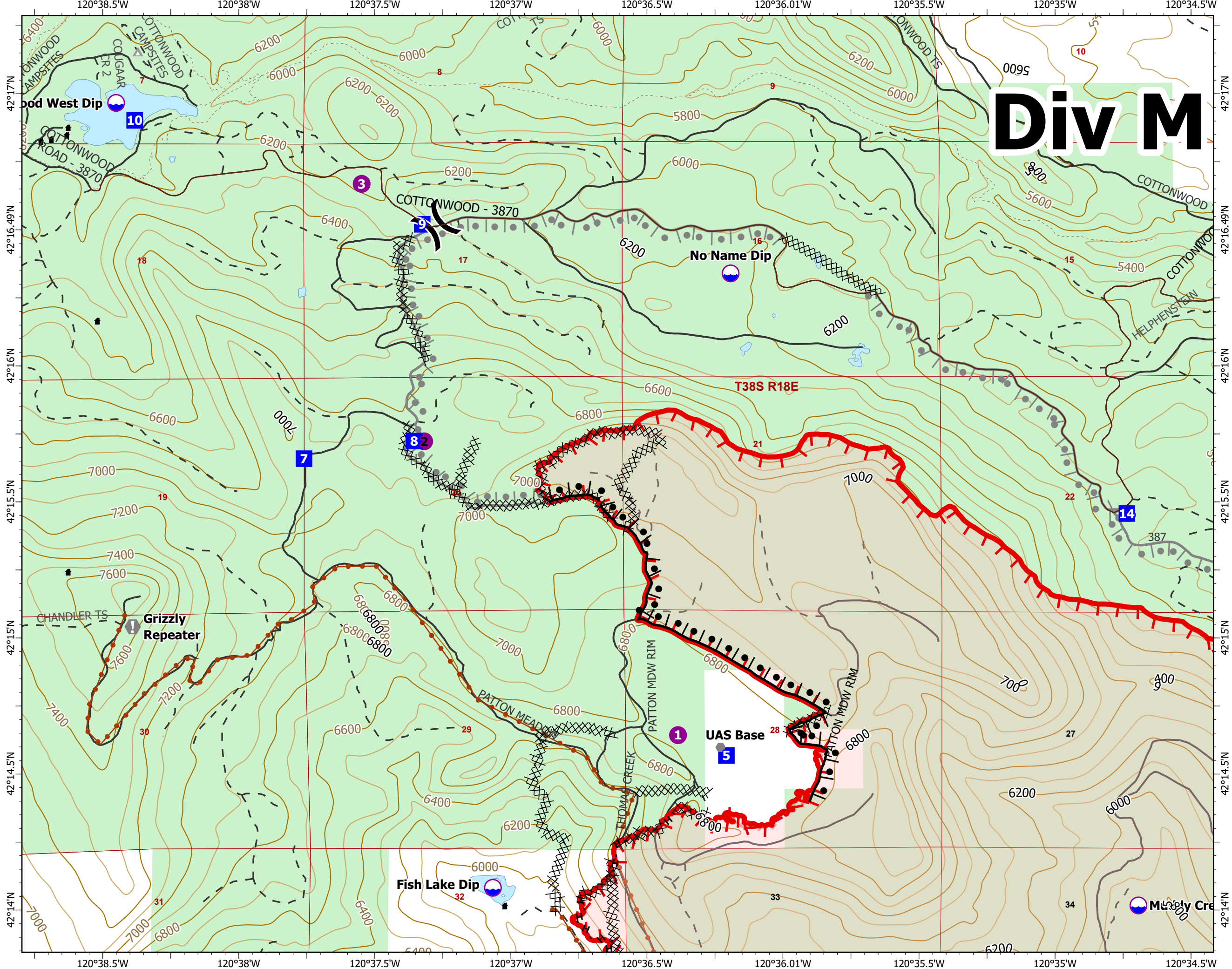


DIV M/DIV A
 Page 1 of 4

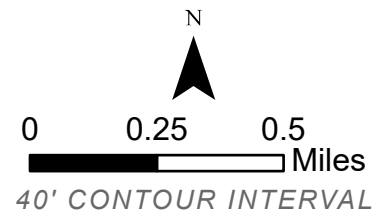
- Dip Site
- Helispot
- Division Break
- Drop Point
- Closure
- Value at Risk
- Other
- Completed Burnout
- Completed Dozer Line
- Completed Hand Line
- Completed Road as Line
- Planned Burnout
- Fire Edge
- Campground
- Structure
- Surfaced Road
- Dirt Road
- Mainline Rd
- Hiking trail
- Waterbody
- United States Forest Service
- Buried Transmission Line



ODF IMT 3
 08/20/2021 1337
 Acres from IR
 WGS 1984 Datum. LatLong Grid

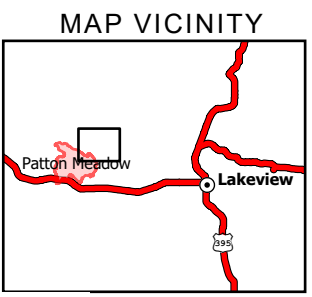


IAP
Patton Meadow
ORFWF210419
08/20/2021 Night
 Fox Cpx: 8304 acres at 08/18/21 @ 18:40 hrs
 Patton Meadow: 7,480 acres
 Willow Valley: 824 acres

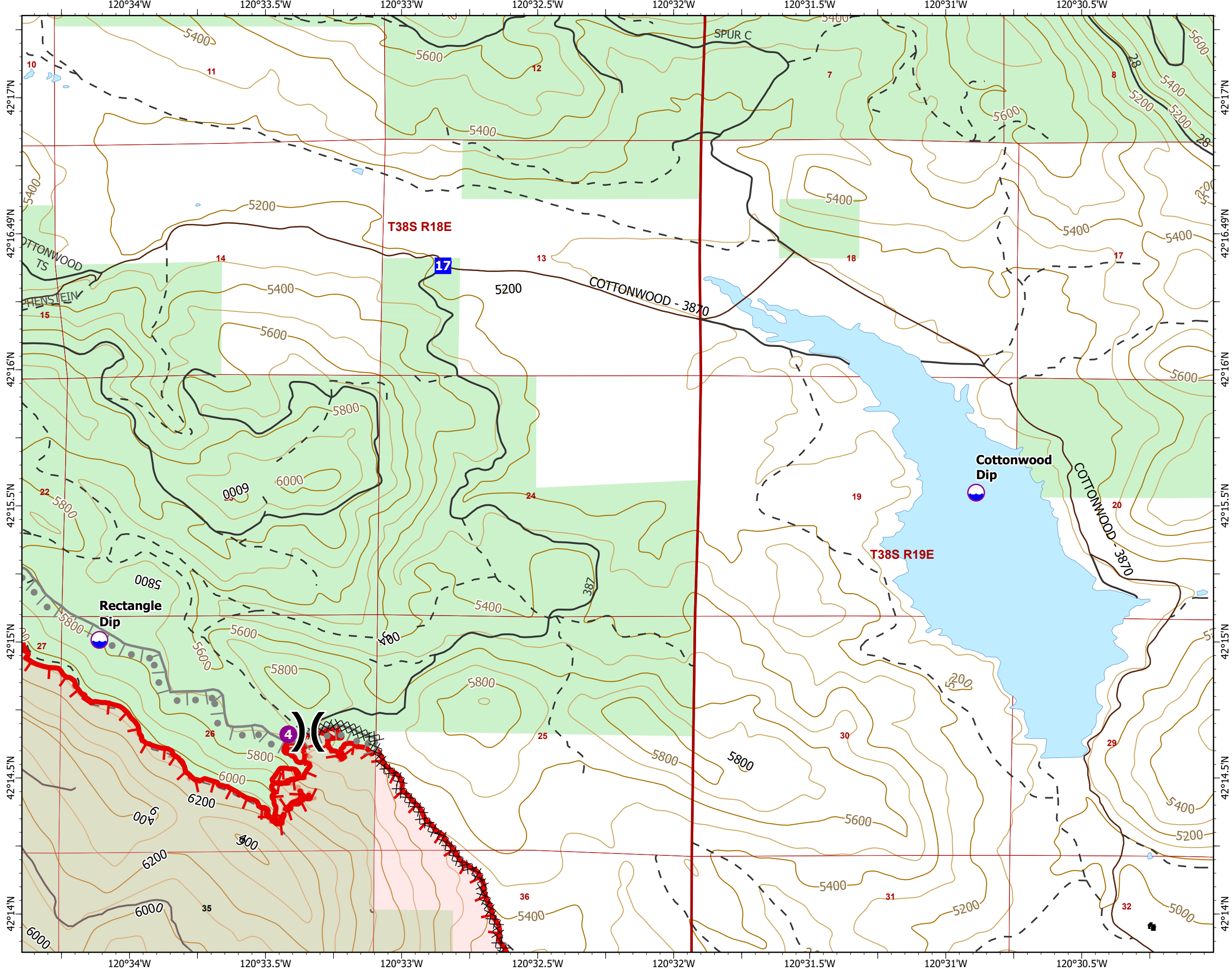


DIV M / DIV Z
 Page 2 of 4

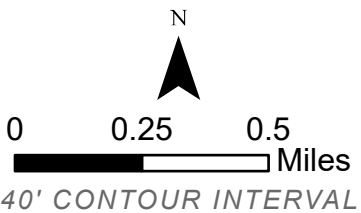
- Dip Site
- Helispot
- Division Break
- Drop Point
- Completed Dozer Line
- Planned Burnout
- Fire Edge
- Structure
- Surfaced Road
- Dirt Road
- Mainline Rd
- Waterbody
- United States Forest Service



ODF IMT 3
 08/20/2021 1337
 Acres from IR
 WGS 1984 Datum. LatLong Grid

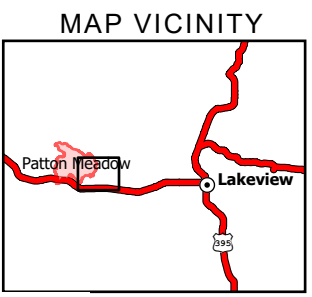


IAP
Patton Meadow
ORFWF210419
08/20/2021 Night
 Fox Cpx: 8304 acres at 08/18/21 @ 18:40 hrs
 Patton Meadow: 7,480 acres
 Willow Valley: 824 acres

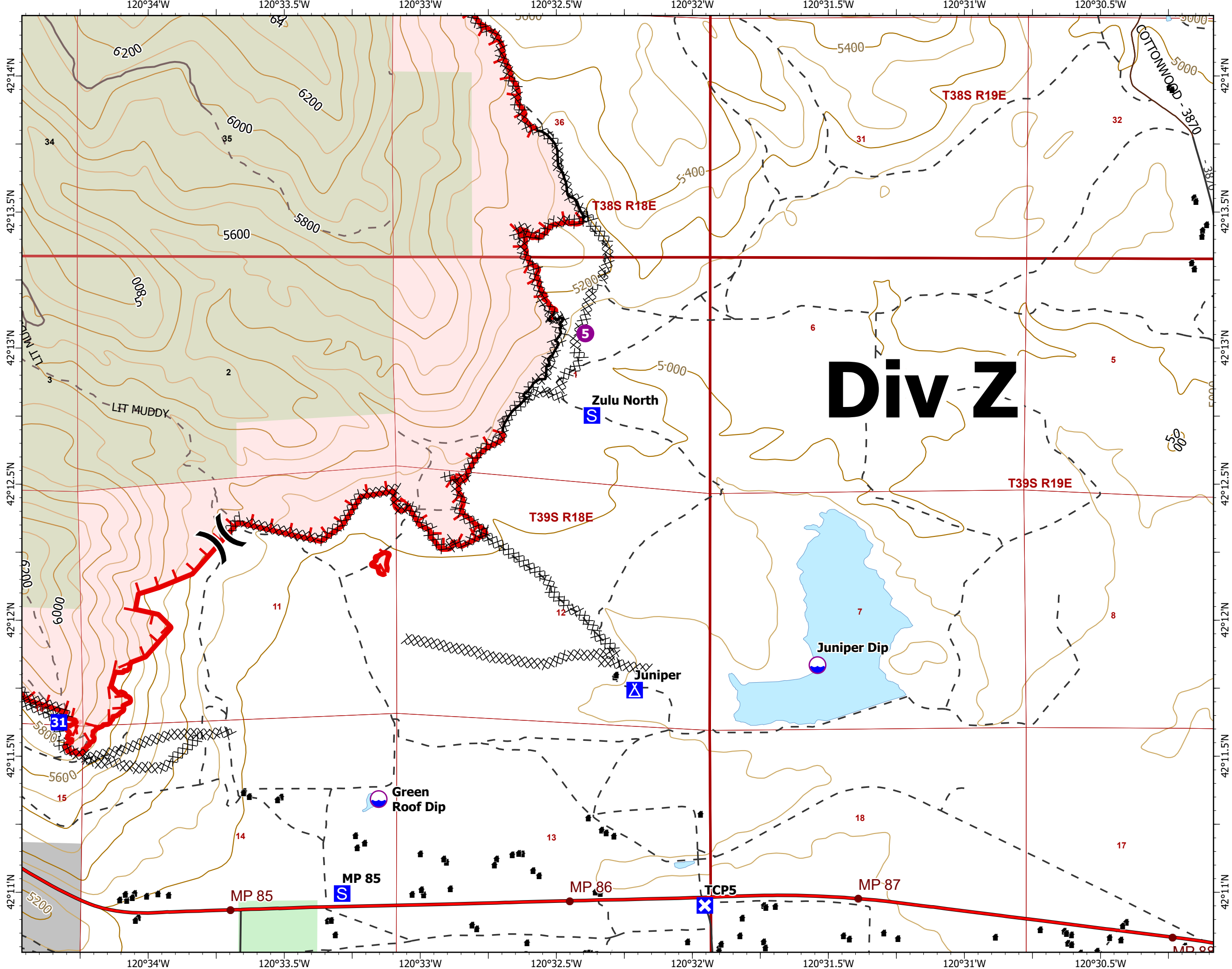


DIV Z / DIV AA
 Page 3 of 4

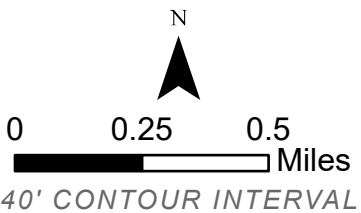
- Dip Site
- Helispot
- Division Break
- Drop Point
- Closure
- Camp
- Staging Area
- Completed Dozer Line
- Fire Edge
- Contained Line
- Structure
- Interstate; Highway
- Surfaced Road
- Dirt Road
- Mainline Rd
- Waterbody
- Oregon Parks and Recreation Department
- United States Forest Service
- Highway Mileposts



ODF IMT 3
 08/20/2021 1337
 Acres from IR
 WGS 1984 Datum. LatLong Grid

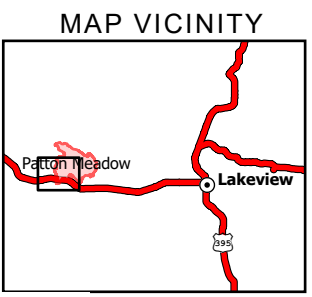


IAP
Patton Meadow
ORFWF210419
08/20/2021 Night
 Fox Cpx: 8304 acres at 08/18/21 @ 18:40 hrs
 Patton Meadow: 7,480 acres
 Willow Valley: 824 acres



DIV AA /DIV A
 Page 4 of 4

- Dip Site
- Helispot
- Division Break
- Drop Point
- Closure
- Staging Area
- Water Source
- Completed Dozer Line
- Completed Hand Line
- Completed Road as Line
- Fire Edge
- Contained Line
- Structure
- Interstate; Highway
- Surfaced Road
- Dirt Road
- Waterbody
- Oregon Parks and Recreation Department
- United States Forest Service
- Buried Transmission Line
- Highway Mileposts



ODF IMT 3
 08/20/2021 1337
 Acres from IR
 WGS 1984 Datum. LatLong Grid

