

120°40.00 E'

120°30.00 E'

120°20.00 E'

Air Operations

Fox Complex ORFWF210422

08/21/21

Fox Cpx: 8567 acres at 08/18/21 @ 18:40 hrs
Patton Meadow: 7,743 acres
Willow Valley: 824 acres

ICS 220 Freqs

Patton Meadow
A/A Primary / TFR 123.8750 AM
A/A Secondary 121.2750 AM
A/G 1 171.0250 FM
A/G 2 169.4375 FM

IA Zone Primary 134.7750 AM

Local Flight Following 167.1750 FM
TOLC 165.3625 FM
DECK 168.3500 FM

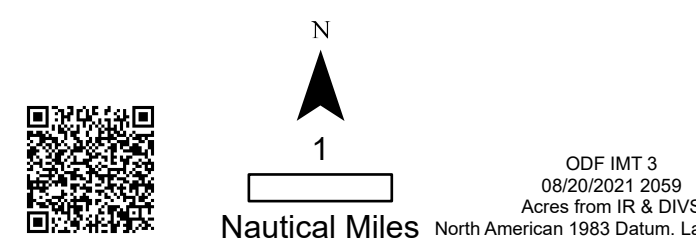
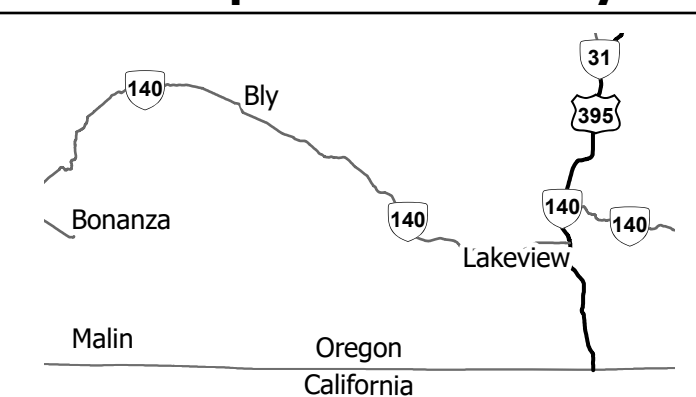
Legend

- Dip Site
- Helispot
- Helibase
- Incident Command Post
- Drop Point
- Camp
- Staging Area
- Value at Risk
- Repair Point
- Repeater
- Hazard
- US Highway
- State Highway
- Highway
- Waterbody
- Oregon Department of State Lands
- Oregon Parks & Recreation Department
- Bureau of Land Management
- United States Forest Service
- Other Federal Lands
- Local Government

Waypoints

FC Point Type	Label	Latitude	Longitude
Camp	Juniper	N42° 11.74300005' W120° 32.21200002'	
Dip Site	Cottonwood Dip	N42° 15.54855560' W120° 30.88836173'	
Dip Site	Cottonwood West Dip	N42° 16.96556920' W120° 38.45083931'	
Dip Site	Drews Dip	N42° 08.67776339' W120° 38.87280494'	
Dip Site	Fish Lake Dip	N42° 11.09432212' W120° 31.52894044'	
Dip Site	Green Roof Dip	N42° 11.34247878' W120° 33.15289404'	
Dip Site	Juniper Dip	N42° 11.83473776' W120° 31.53997605'	
Dip Site	Muddy Creek Dip	N42° 14.01707084' W120° 34.69357719'	
Dip Site	No Name Dip	N42° 16.33996796' W120° 36.19237654'	
Dip Site	Rectangle Dip	N42° 15.00742884' W120° 34.10781865'	
Dip Site	Triangle Dip	N42° 11.75362261' W120° 36.12591577'	
Drop Point	1	N42° 11.86532648' W120° 36.69081265'	
Drop Point	10	N42° 16.90232674' W120° 38.38281369'	
Drop Point	14	N42° 15.45732690' W120° 34.73581290'	
Drop Point	17	N42° 16.38232718' W120° 32.84781273'	
Drop Point	2	N42° 13.42588606' W120° 36.79365099'	
Drop Point	3	N42° 13.25732662' W120° 36.29081273'	
Drop Point	31	N42° 11.62446994' W120° 34.32793410'	
Drop Point	32	N42° 12.41430470' W120° 35.15375125'	
Drop Point	33	N42° 11.79101419' W120° 35.26011060'	
Drop Point	34	N42° 16.60766395' W120° 36.19162277'	
Drop Point	5	N42° 14.56832672' W120° 36.20781301'	
Drop Point	7	N42° 15.65901364' W120° 37.60474442'	
Drop Point	8	N42° 15.72381229' W120° 37.35494002'	
Drop Point	9	N42° 16.52032678' W120° 37.32581350'	
Hazard		N42° 19.13032751' W120° 31.32812966'	
Hazard		N42° 20.112132759' W120° 31.25681311'	
Hazard		N42° 20.14132750' W120° 32.34781329'	
Hazard		N42° 17.16332782' W120° 26.01281173'	
Helibase		N42° 09.26469000' W120° 24.62734911'	
Helispot	1	N42° 14.64301297' W120° 36.38571152'	
Helispot	2	N42° 15.72273987' W120° 37.31876557'	
Helispot	3	N42° 16.66890267' W120° 37.54848693'	
Helispot	4	N42° 14.66013413' W120° 33.41620230'	
Helispot	5	N42° 13.05389832' W120° 32.39317463'	
Helispot	6	N42° 11.75143335' W120° 35.29689081'	
Incident Command Post	Lake County Fairgrounds	N42° 11.60222781' W120° 21.69285011'	
Repair Point		N42° 12.00584735' W120° 35.82826405'	
Repair Point		N42° 12.14272047' W120° 36.82314902'	
Repeater	CMD 1	N42° 12.27206031' W120° 19.80923506'	
Staging Area	Booth	N42° 11.31935122' W120° 34.89284700'	
Staging Area	MP 85	N42° 10.99529752' W120° 33.28699190'	
Staging Area	Patton	N42° 12.00494587' W120° 36.82209873'	
Staging Area	Zulu North	N42° 12.75232695' W120° 32.68812077'	
Value at Risk	Grizzly Repeater	N42° 15.04172318' W120° 38.38995518'	

Air Operations Vicinity



ODF IMT 3
08/20/2021 2059
Acres from IR & DIVS
North American 1983 Datum, Lat/Long Grid

