

IAP

Patton Meadow

ORFWF210419

08/23/2021 Day

Fox Cpx: 9,771 acres at 08/21/21 @ 07:30 hrs

Patton Meadow: 8,948 acres

Willow Valley: 824 acres



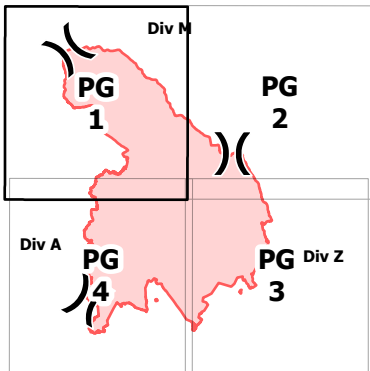
0 0.25 0.5 Miles

40' CONTOUR INTERVAL

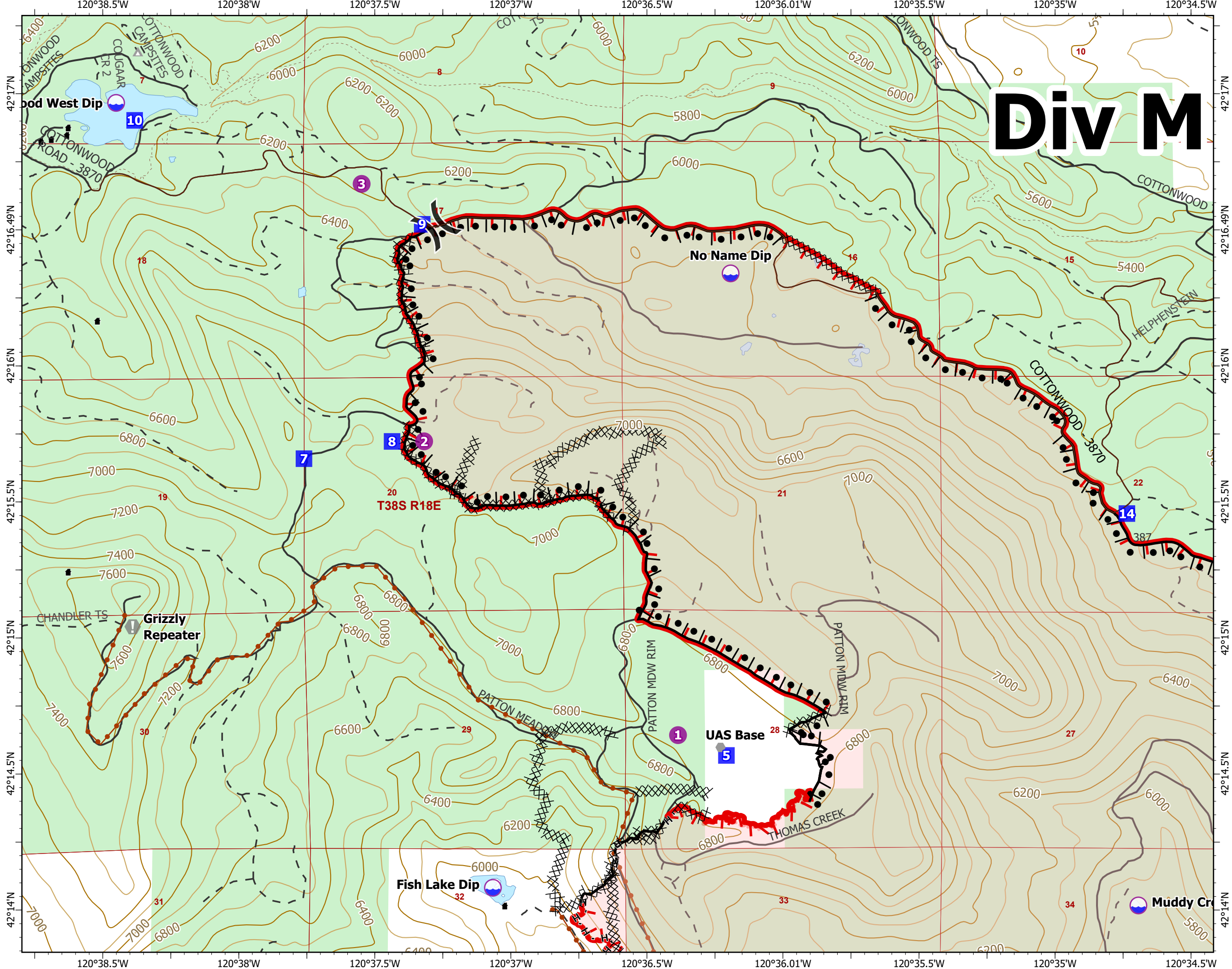
Scale: 1:24,000

Page 1 of 4

- Dip Site
- Helispot
- Division Break
- Drop Point
- Closure
- Value at Risk
- Other
- Completed Burnout
- Completed Dozer Line
- Completed Hand Line
- Completed Road as Line
- Fire Edge
- Contained Line
- Campground
- Structure
- Surfaced Road
- Dirt Road
- Mainline Rd
- Hiking trail
- Waterbody
- United States Forest Service
- Buried Transmission Line



ODF IMT 3
08/22/2021 2131
Acres from IR & OSC
WGS 1984 Datum. LatLong Grid



Div M

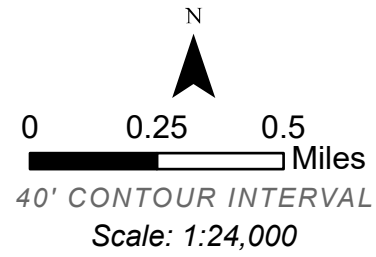
IAP

Patton Meadow

ORFWF210419

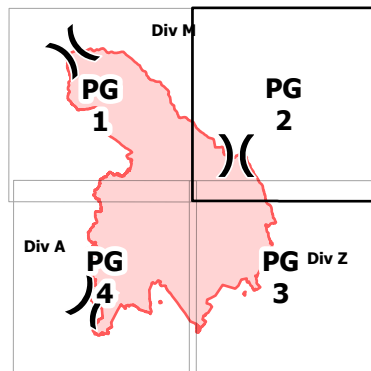
08/23/2021 Day

Fox Cpx: 9,771 acres at 08/21/21 @ 07:30 hrs
 Patton Meadow: 8,948 acres
 Willow Valley: 824 acres

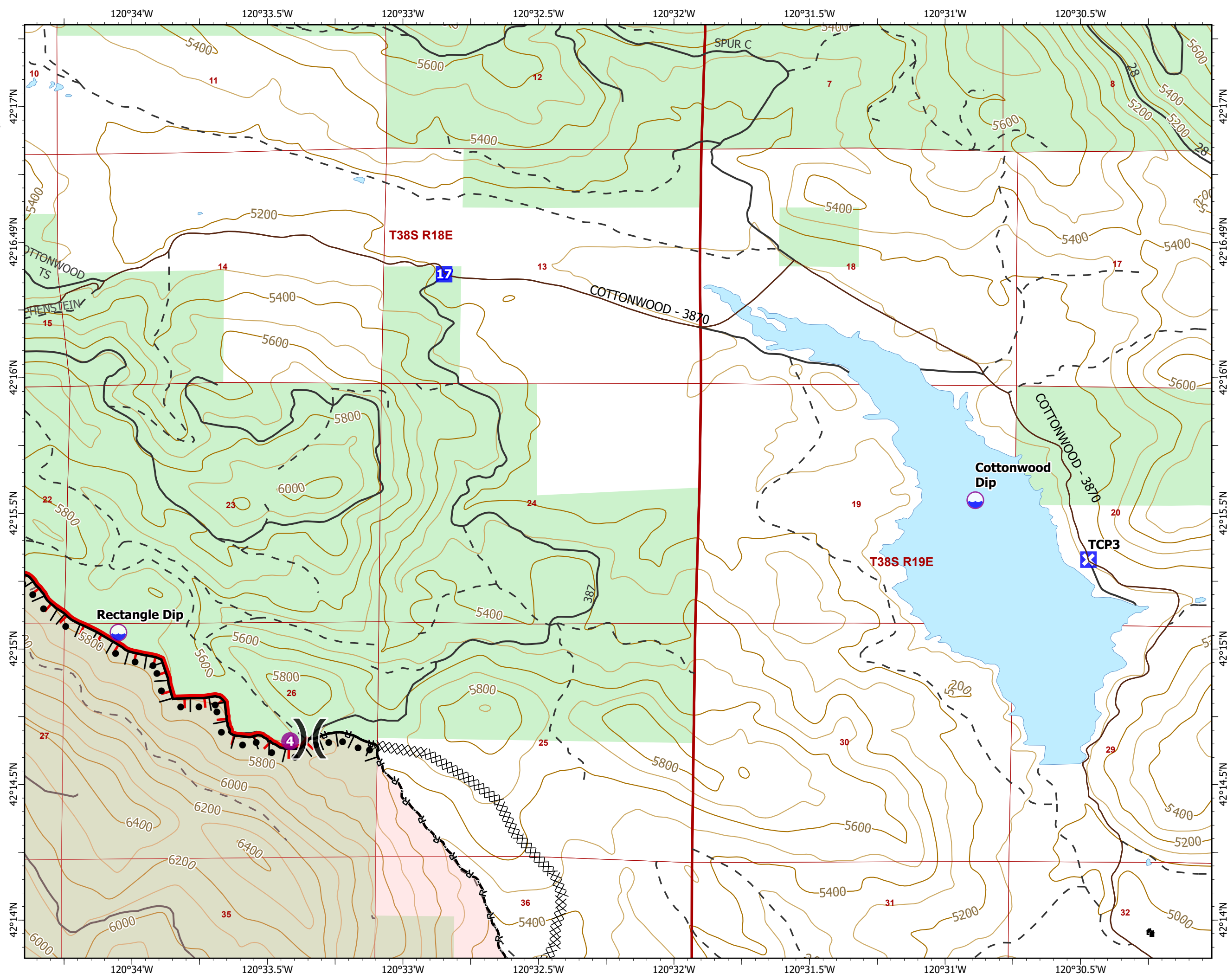


Page 2 of 4

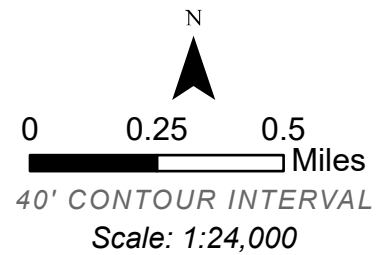
- Dip Site
- Helispot
- Division Break
- Drop Point
- Closure
- Completed Burnout
- Completed Dozer Line
- Completed Road as Line
- Fire Edge
- Contained Line
- Structure
- Surfaced Road
- Dirt Road
- Mainline Rd
- Waterbody
- United States Forest Service



ODF IMT 3
 08/22/2021 2132
 Acres from IR & OSC
 WGS 1984 Datum. LatLong Grid

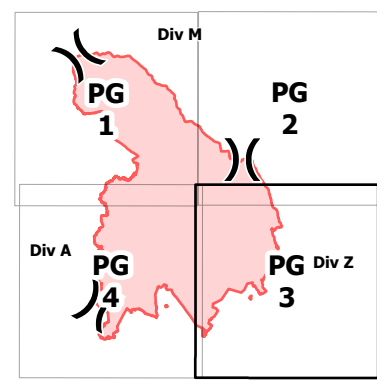


IAP
Patton Meadow
ORFWF210419
08/23/2021 Day
 Fox Cpx: 9,771 acres at 08/21/21 @ 07:30 hrs
 Patton Meadow: 8,948 acres
 Willow Valley: 824 acres

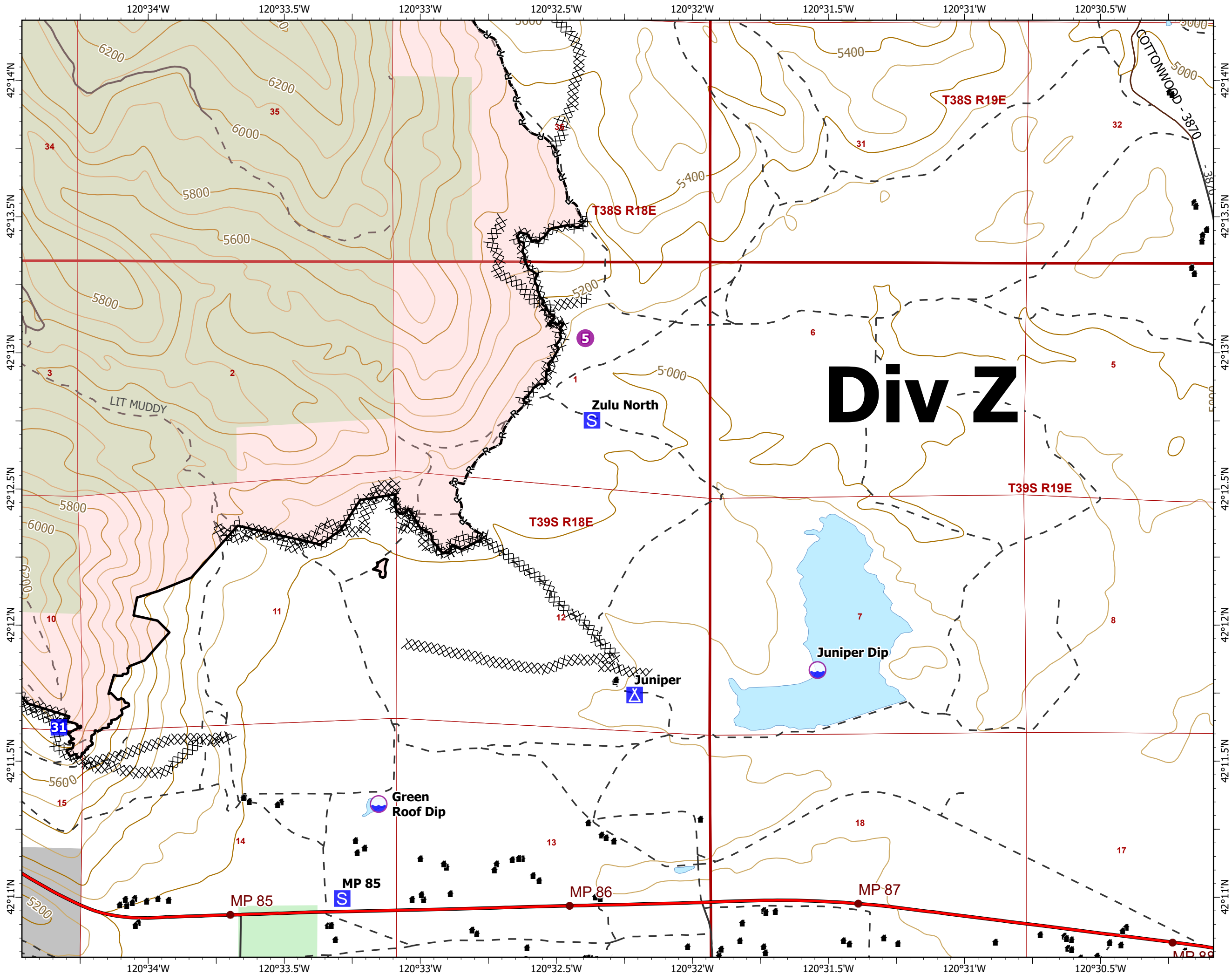


Page 3 of 4

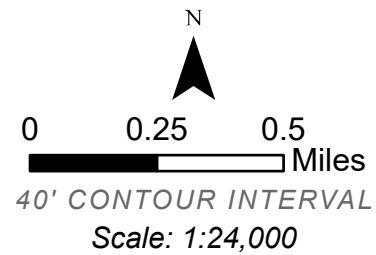
- Dip Site
- Helispot
- Drop Point
- Camp
- Staging Area
- Completed Dozer Line
- Completed Road as Line
- Contained Line
- Structure
- Interstate; Highway
- Surfaced Road
- Dirt Road
- Mainline Rd
- Waterbody
- Oregon Parks and Recreation Department
- United States Forest Service
- Highway Mileposts



ODF IMT 3
 08/22/2021 2132
 Acres from IR & OSC
 WGS 1984 Datum. LatLong Grid

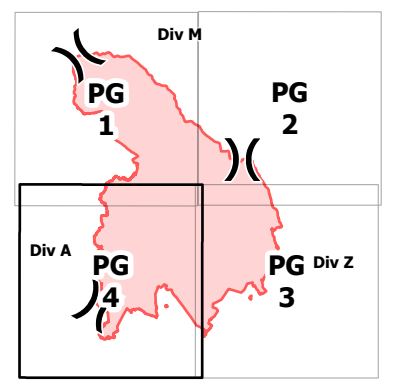


IAP
Patton Meadow
ORFWF210419
08/23/2021 Day
 Fox Cpx: 9,771 acres at 08/21/21 @ 07:30 hrs
 Patton Meadow: 8,948 acres
 Willow Valley: 824 acres



Page 4 of 4

- Dip Site
- Helispot
- Division Break
- Drop Point
- Closure
- Staging Area
- Water Source
- Completed Dozer Line
- Completed Hand Line
- Completed Road as Line
- Fire Edge
- Contained Line
- Structure
- Interstate; Highway
- Surfaced Road
- Dirt Road
- Waterbody
- Oregon Parks and Recreation Department
- United States Forest Service
- Buried Transmission Line
- Highway Mileposts



ODF IMT 3
 08/22/2021 2132
 Acres from IR & OSC
 WGS 1984 Datum. LatLong Grid

