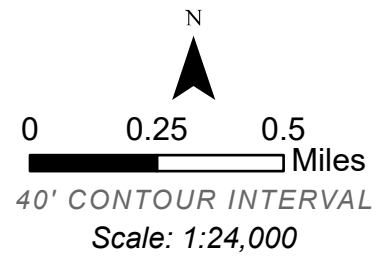


# Div M

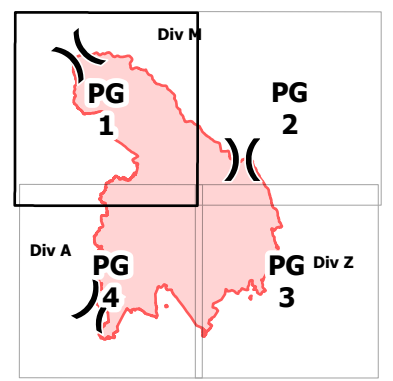
## IAP Patton Meadow ORFWF210419 08/23/2021 Night

Fox Cpx: 9,771 acres at 08/21/21 @ 07:30 hrs  
Patton Meadow: 8,948 acres  
Willow Valley: 824 acres

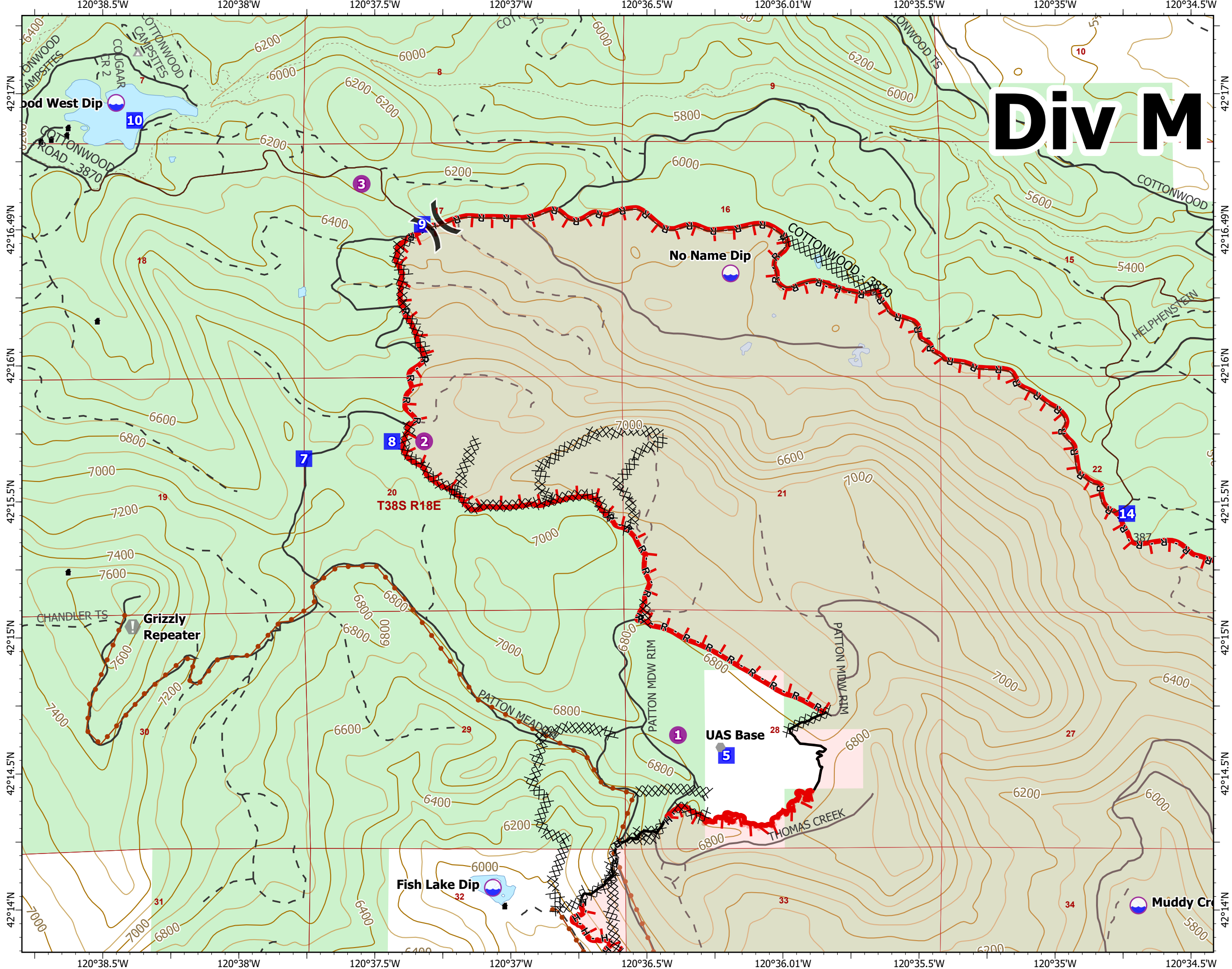


Page 1 of 4

- Dip Site
- Helispot
- Division Break
- Drop Point
- Closure
- Value at Risk
- Other
- Completed Dozer Line
- Completed Hand Line
- Completed Road as Line
- Fire Edge
- Contained Line
- Campground
- Structure
- Surfaced Road
- Dirt Road
- Mainline Rd
- Hiking trail
- Waterbody
- United States Forest Service
- Buried Transmission Line



ODF IMT 3  
08/23/2021 1306  
Acres from IR & OSC  
WGS 1984 Datum. LatLong Grid



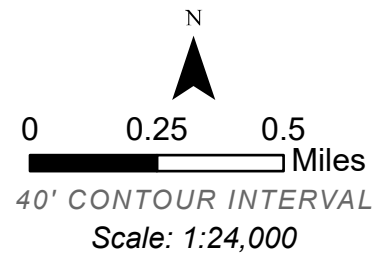
# IAP

## Patton Meadow

### ORFWF210419

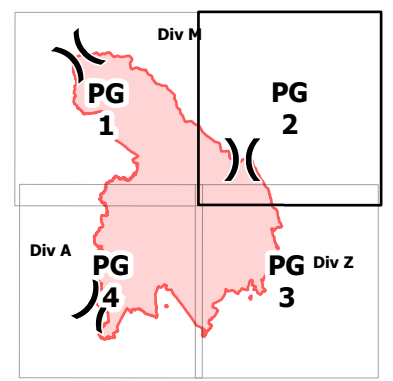
#### 08/23/2021 Night

Fox Cpx: 9,771 acres at 08/21/21 @ 07:30 hrs  
 Patton Meadow: 8,948 acres  
 Willow Valley: 824 acres

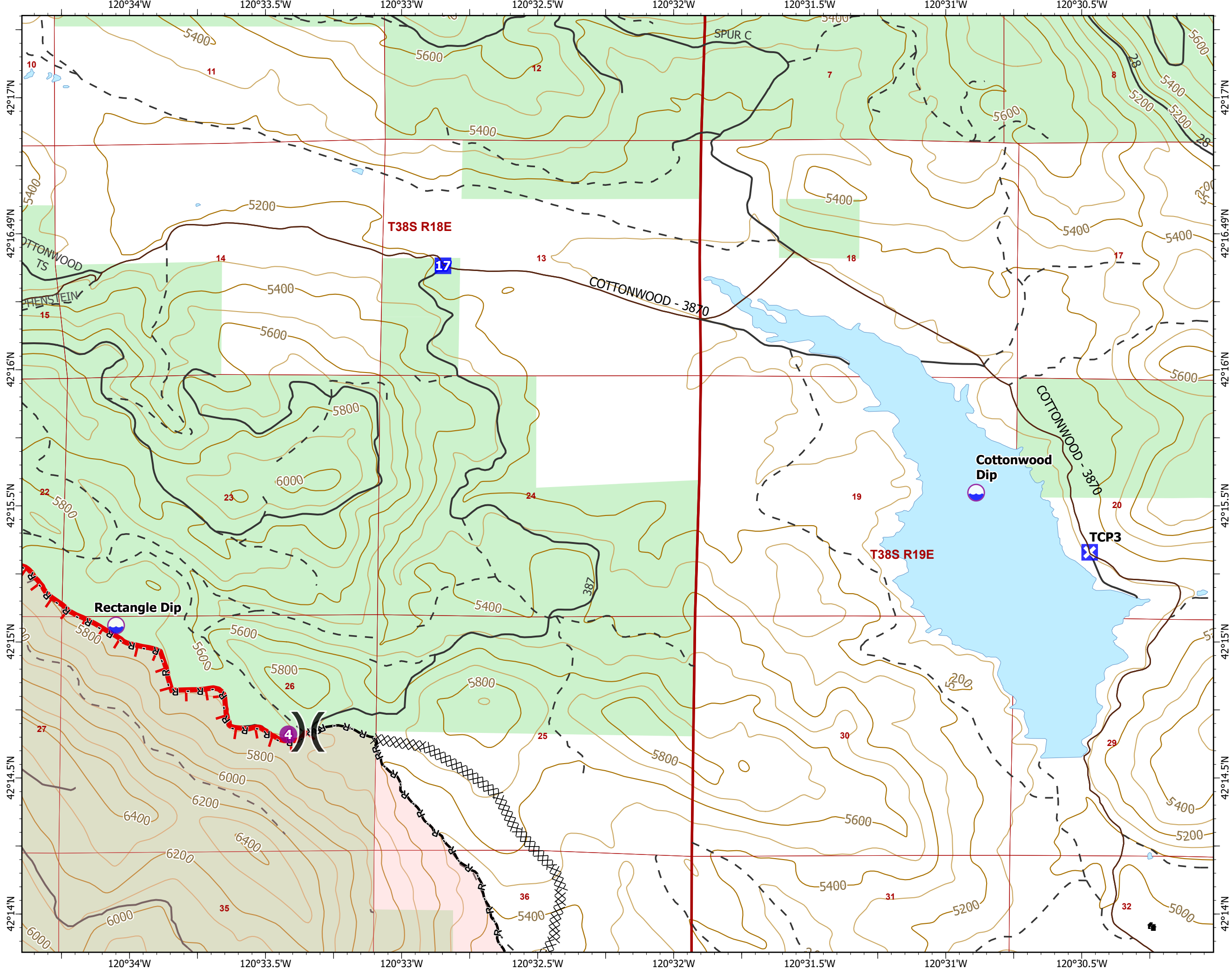


Page 2 of 4

- Dip Site
- Helispot
- Division Break
- Drop Point
- Closure
- Completed Dozer Line
- Completed Road as Line
- Fire Edge
- Contained Line
- Structure
- Surfaced Road
- Dirt Road
- Mainline Rd
- Waterbody
- United States Forest Service

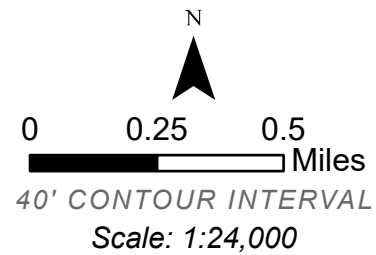


ODF IMT 3  
 08/23/2021 1306  
 Acres from IR & OSC  
 WGS 1984 Datum. LatLong Grid

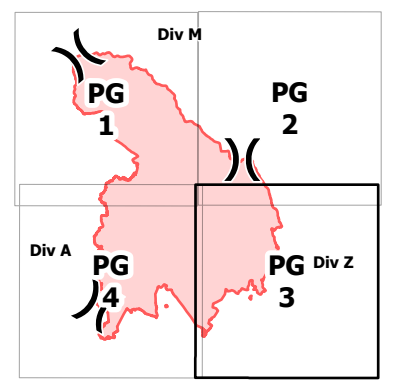


**IAP**  
**Patton Meadow**  
**ORFWF210419**  
**08/23/2021 Night**

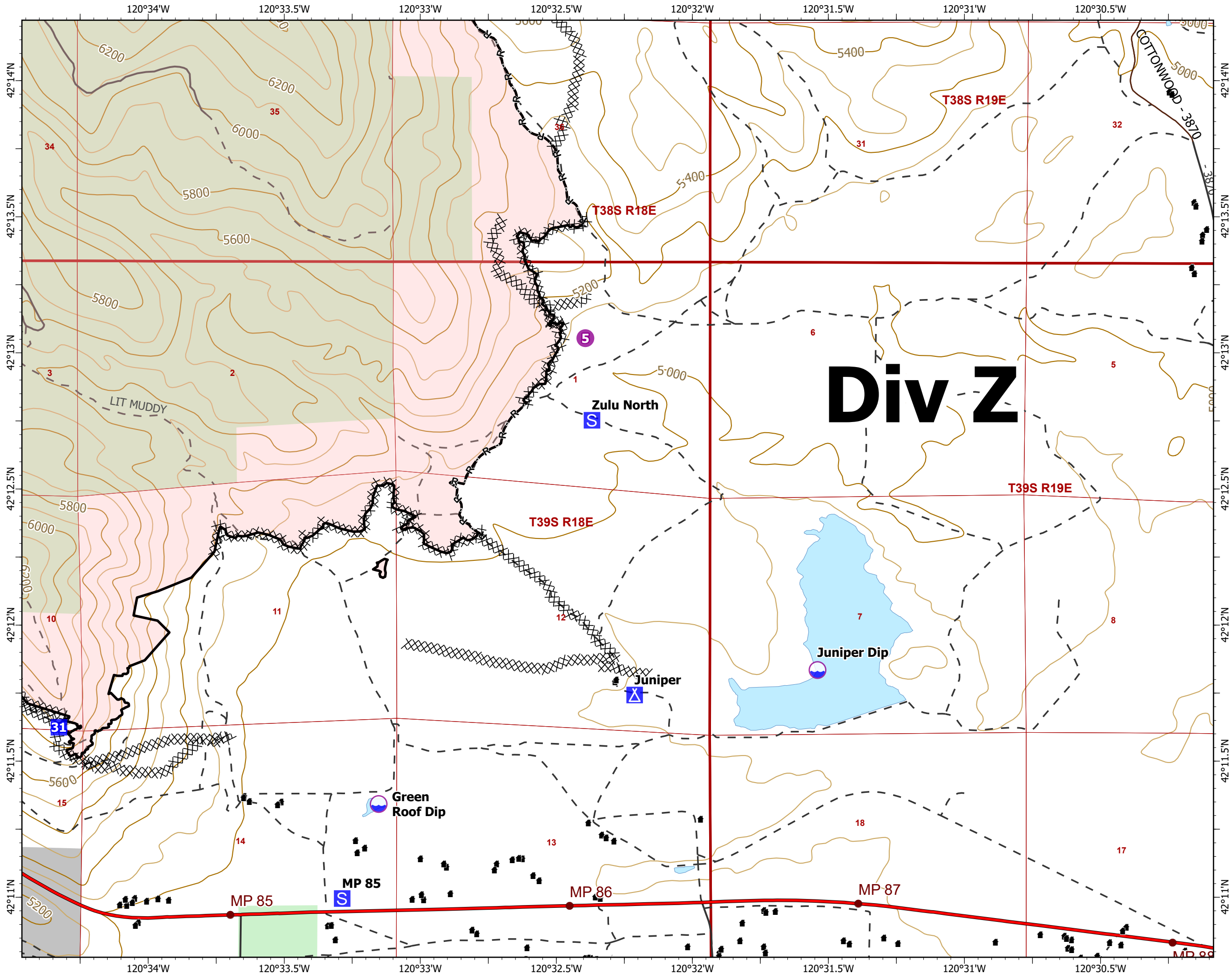
Fox Cpx: 9,771 acres at 08/21/21 @ 07:30 hrs  
 Patton Meadow: 8,948 acres  
 Willow Valley: 824 acres



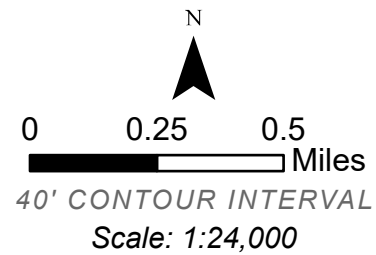
- Dip Site
- Helispot
- Drop Point
- Camp
- Staging Area
- Completed Dozer Line
- Completed Road as Line
- Contained Line
- Structure
- Interstate; Highway
- Surfaced Road
- Dirt Road
- Mainline Rd
- Waterbody
- Oregon Parks and Recreation Department
- United States Forest Service
- Highway Mileposts



ODF IMT 3  
 08/23/2021 1306  
 Acres from IR & OSC  
 WGS 1984 Datum. LatLong Grid

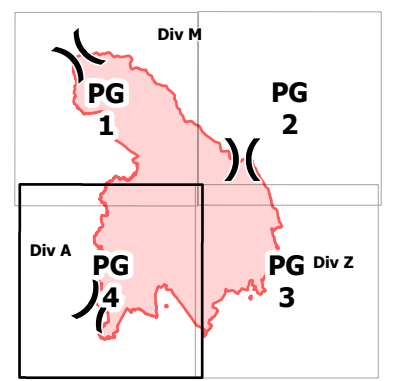


**IAP**  
**Patton Meadow**  
**ORFWF210419**  
**08/23/2021 Night**  
 Fox Cpx: 9,771 acres at 08/21/21 @ 07:30 hrs  
 Patton Meadow: 8,948 acres  
 Willow Valley: 824 acres



Page 4 of 4

- Dip Site
- Helispot
- Division Break
- Drop Point
- Closure
- Staging Area
- Water Source
- Completed Dozer Line
- Completed Hand Line
- Completed Road as Line
- Fire Edge
- Contained Line
- Structure
- Interstate; Highway
- Surfaced Road
- Dirt Road
- Waterbody
- Oregon Parks and Recreation Department
- United States Forest Service
- Buried Transmission Line
- Highway Mileposts



ODF IMT 3  
 08/23/2021 1306  
 Acres from IR & OSC  
 WGS 1984 Datum. LatLong Grid

