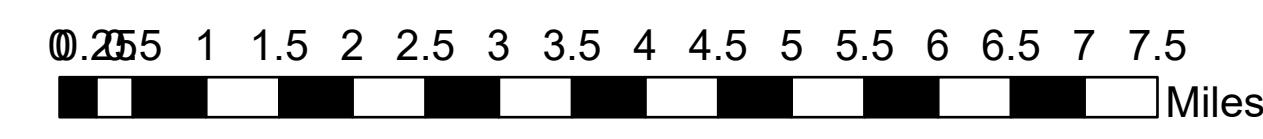


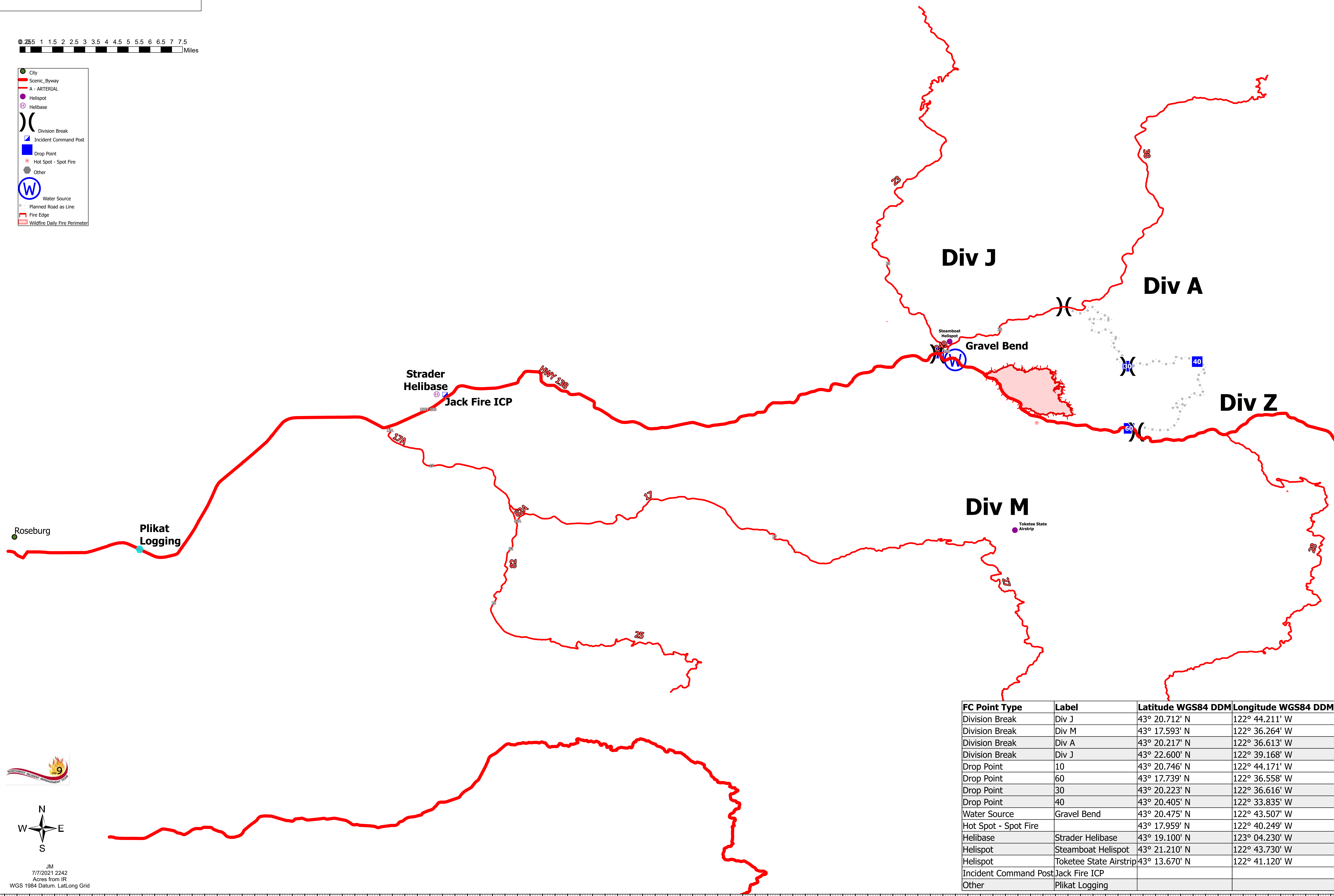
Transportation

Jack Fire
OR-UPF-000265
07/08/2021 - 24hr

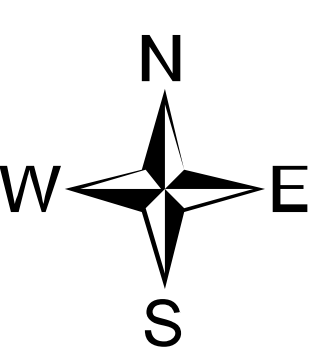
2,396 acres at 07/07/2021 - 12am



- City
- Scenic Byway
- A - ARTERIAL
- Helispot
- ⊕ Helibase
- ⌋ Division Break
- ⌋ Incident Command Post
- Drop Point
- Hot Spot - Spot Fire
- Other
- Ⓜ Water Source
- Planned Road as Line
- Fire Edge
- Wildfire Daily Fire Perimeter



FC Point Type	Label	Latitude WGS84 DDM	Longitude WGS84 DDM
Division Break	Div J	43° 20.712' N	122° 44.211' W
Division Break	Div M	43° 17.593' N	122° 36.264' W
Division Break	Div A	43° 20.217' N	122° 36.613' W
Division Break	Div J	43° 22.600' N	122° 39.168' W
Drop Point	10	43° 20.746' N	122° 44.171' W
Drop Point	60	43° 17.739' N	122° 36.558' W
Drop Point	30	43° 20.223' N	122° 36.616' W
Drop Point	40	43° 20.405' N	122° 33.835' W
Water Source	Gravel Bend	43° 20.475' N	122° 43.507' W
Hot Spot - Spot Fire		43° 17.959' N	122° 40.249' W
Helibase	Strader Helibase	43° 19.100' N	123° 04.230' W
Helispot	Steamboat Helispot	43° 21.210' N	122° 43.730' W
Helispot	Toketee State Airstrip	43° 13.670' N	122° 41.120' W
Incident Command Post	Jack Fire ICP		
Other	Plikat Logging		



JM
7/7/2021 2242
Acres from IR
WGS 1984 Datum, Lat/Long Grid