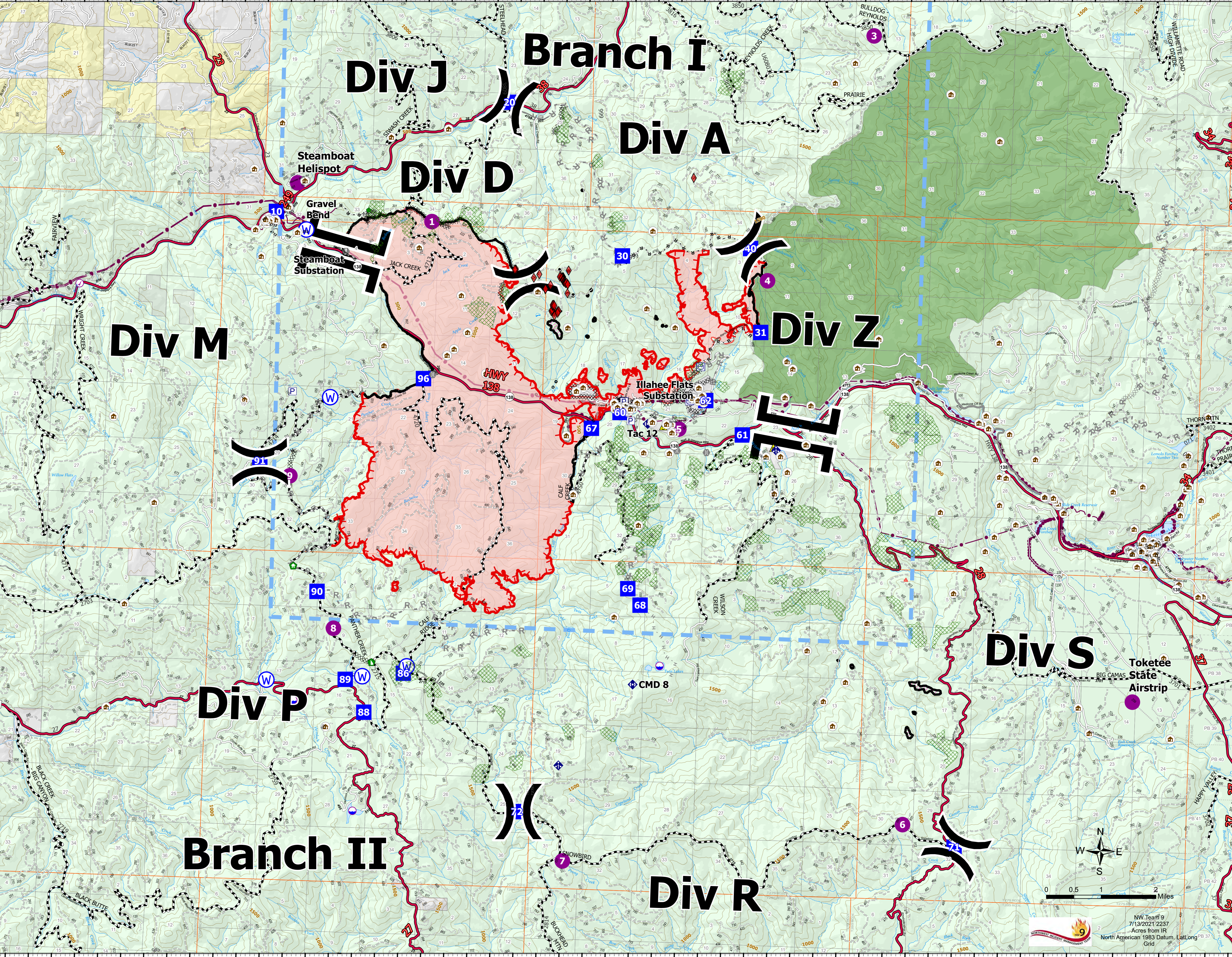


Operations Map
 Jack Fire
 OR-UPF-000265
 07/14/2021 - 24hr
 13907 acres at 07/13/2021 2000

- JackFireStructures_pt
- ATP
- Pump
- Water Tank
- Check Point
- Dip Site
- Helispot
- Division Break
- Branch Break
- Drop Point
- Value at Risk
- Bridge
- Structure Wrap
- Repair Point
- Dozer Push
- Mobile Weather Unit
- Repeater
- Safety Zone
- Water Source
- Completed Dozer Line
- Completed Hand Line
- Completed Road as Line
- Planned Dozer Line
- Planned Hand Line
- Planned Road as Line
- Retardant Drop
- Temporary Flight Restriction
- Fire Edge
- Contained Line
- Wildfire Daily Fire Perimeter
- Utility Power Lines
- Contours 100ft
- Calf_Units
- CC_Alternative_Final_Units
- DryUnits
- JackFinalUnits
- Area to Protect (ATP)
- Land Ownership
- BLM
- PV
- <all other values>
- Forest Service Land
- Wilderness
- Protracted Section
- Section
- Township
- Road
- A - Arterial
- C - Collector
- Forest Service Roads
- Paved Road
- Gravel Road
- Dirt Roads
- Unimproved Roads
- UnSpecified
- Closed Roads
- <all other values>
- HIFLD Roads
- Primary Highway
- Secondary Highway
- Paved Roads
- Dirt (Not Paved)
- Interstate Not Paved
- US Route Not Paved
- NHDWaterbody
- Lake / Pond
- Lake / Pond (Intermittent)
- Reservoir
- NHDFlowline
- FCode
- Stream/River

FC Point Type	Label	Latitude WGS84	Longitude WGS84
Branch Break	Branch II	43° 20.142' N	122° 42.687' W
Branch Break	Branch I	43° 21.489' N	122° 32.748' W
Division Break	Div A	43° 20.423' N	122° 33.815' W
Division Break	Div J	43° 22.600' N	122° 39.168' W
Drop Point	10	43° 20.746' N	122° 44.171' W
Drop Point	60	43° 17.739' N	122° 36.546' W
Drop Point	30	43° 20.223' N	122° 36.616' W
Drop Point	40	43° 20.405' N	122° 33.835' W
Water Source	Gravel Bend	43° 20.475' N	122° 43.507' W
Helispot	Steamboat Helispot	43° 21.210' N	122° 43.707' W
Helispot	Toketee State Airstrip	43° 13.40' N	122° 25.23' W
Value at Risk	Steamboat Substation	43° 20.152' N	122° 42.628' W
Value at Risk	Illahee Flats Substation	43° 17.963' N	122° 34.874' W
Drop Point	62	43° 17.973' N	122° 34.704' W
Helispot	4	43° 19.902' N	122° 33.444' W
Helispot	5	43° 17.507' N	122° 35.269' W
Bridge	2	43° 18.244' N	122° 40.653' W
Drop Point	20	43° 22.600' N	122° 39.168' W
Helispot	3	43° 23.838' N	122° 31.252' W
Helispot	1	43° 20.668' N	122° 40.781' W
Safety Zone	31	43° 17.631' N	122° 34.590' W
Safety Zone	31	43° 17.259' N	122° 33.201' W
Drop Point	31	43° 19.902' N	122° 33.574' W
Mobile Weather Unit	CMD 8	43° 17.219' N	122° 33.143' W
Repeater	CMD 8	43° 13.434' N	122° 36.093' W
Division Break	Div S	43° 11.001' N	122° 28.963' W
Division Break	Div R	43° 11.362' N	122° 36.963' W
Division Break	Div P	43° 16.759' N	122° 44.350' W
Drop Point	96	43° 18.174' N	122° 40.852' W
Repeater	Tac 12	43° 17.572' N	122° 35.949' W

43° 10' N 122° 54' W
 43° 10' N 122° 53' W
 43° 10' N 122° 52' W
 43° 10' N 122° 51.01' W
 43° 10' N 122° 50' W
 43° 10' N 122° 49' W
 43° 10' N 122° 48' W
 43° 10' N 122° 47' W
 43° 10' N 122° 46' W
 43° 10' N 122° 45' W
 43° 10' N 122° 44' W
 43° 10' N 122° 43' W
 43° 10' N 122° 42' W
 43° 10' N 122° 41' W
 43° 10' N 122° 40' W
 43° 10' N 122° 39' W
 43° 10' N 122° 38' W
 43° 10' N 122° 37' W
 43° 10' N 122° 36' W
 43° 10' N 122° 35' W
 43° 10' N 122° 34' W
 43° 10' N 122° 33' W
 43° 10' N 122° 32' W
 43° 10' N 122° 31' W
 43° 10' N 122° 30' W
 43° 10' N 122° 29' W
 43° 10' N 122° 28' W
 43° 10' N 122° 27' W
 43° 10' N 122° 26' W
 43° 10' N 122° 25' W
 43° 10' N 122° 24' W
 43° 10' N 122° 23' W



NW Team 9
 7/13/2021 2237
 Acres from IR
 North American 1983 Datum, Lat, Long
 Grid