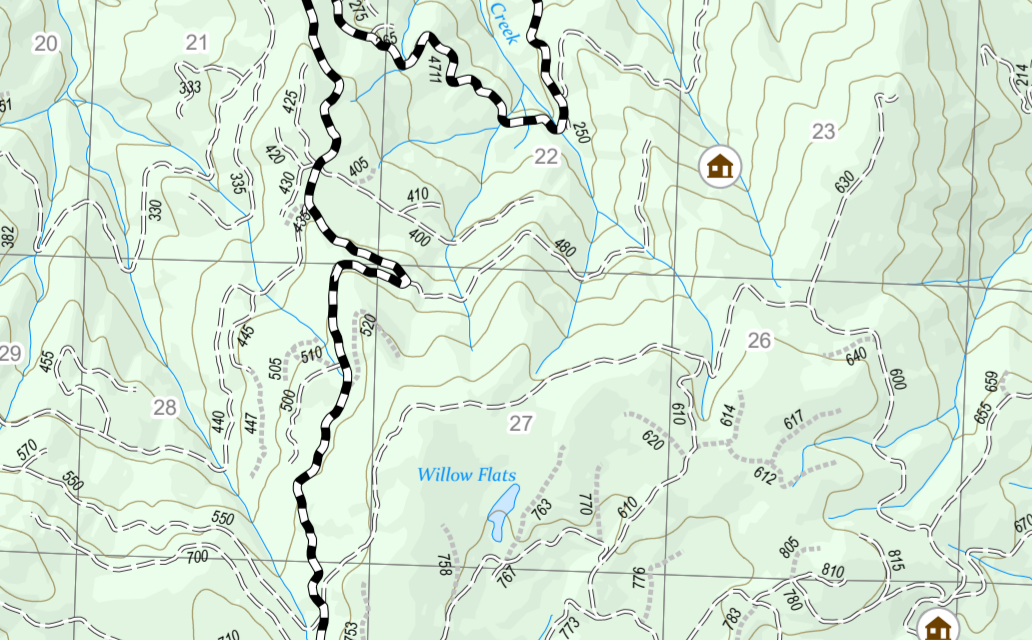


# Operations Map Branch I

Jack Fire  
OR-UPF-000265  
07/14/2021 - 24hr  
13907 acres at 07/13/2021 2000



- JackFireStructures\_pt
- ATP
- Pump
- Water Tank
- Check Point
- Dip Site
- Helispot
- Contained Line
- Wildfire Daily Fire Perimeter
- Contours 100ft
- Utility Power Lines
- Calf\_Units
- CC\_Alternative\_Final\_Units
- DryUnits
- JackFinalUnits
- Area to Protect (ATP)
- Land Ownership
  - BLM
  - PV
  - <all other values>
  - Forest Service Land
  - Wilderness
  - Protracted Section
  - Section
  - Township
- Road
  - A - Arterial
  - C - Collector
- HIFLD Roads
  - Primary Highway
  - Secondary Highway
  - Paved Roads
  - Dirt (Not Paved)
  - Interstate Not Paved
  - US Route Not Paved
- Forest Service Roads
  - Paved Road
  - Gravel Road
  - Dirt Roads
  - Unimproved Roads
  - Unspecified
  - Closed Roads
  - <all other values>
- NHDWaterbody
  - Lake / Pond
  - Lake / Pond (Intermittent)
  - Reservoir
- NHDFlowline
  - Stream/River
- Drop Point
- Value at Risk
- Bridge
- Structure Wrap
- Repair Point
- Mobile Weather Unit
- Repeater
- Safety Zone
- Water Source
- Completed Dozer Line
- Completed Hand Line
- Completed Road as Line
- Planned Dozer Line
- Planned Hand Line
- Planned Road as Line
- Retardant Drop
- Temporary Flight Restriction
- Fire Edge



FC Point Type	Label	Latitude WGS84	Longitude WGS84
Branch Break	Branch II	43° 20.142' N	122° 42.689' W
Branch Break	Branch I	43° 17.489' N	122° 32.738' W
Division Break	Div A	43° 20.668' N	122° 40.781' W
Division Break	Div J	43° 22.600' N	122° 39.168' W
Drop Point	10	43° 20.746' N	122° 44.171' W
Drop Point	60	43° 17.739' N	122° 36.558' W
Drop Point	30	43° 20.223' N	122° 36.616' W
Drop Point	40	43° 20.405' N	122° 33.855' W
Water Source	Gravel Bend	43° 20.475' N	122° 43.507' W
Water Source	Steamboat Helispot	43° 21.210' N	122° 43.730' W
Value at Risk	Steamboat Substation	43° 20.152' N	122° 42.628' W
Value at Risk	Illahee Flats Substation	43° 17.963' N	122° 34.874' W
Drop Point	62	43° 19.973' N	122° 34.704' W
Drop Point	4	43° 19.902' N	122° 33.444' W
Helispot	5	43° 17.507' N	122° 35.269' W
Bridge	8	43° 18.244' N	122° 40.653' W
Drop Point	20	43° 22.600' N	122° 39.183' W

**Div J**

**Div D**

**Div A**

**Div Z**

**Div M**

Map features include: Steamboat Helispot, Gravel Bend, Steamboat Substation, Illahee Flats Substation, Tac 12, and various roads like HWY 138 and HWY 96. Contour lines and water bodies are also visible.

FC Point Type	Label	Latitude WGS84	Longitude WGS84
Helispot	2	43° 24.913' N	122° 34.669' W
Helispot	3	43° 23.838' N	122° 31.292' W
Helispot	1	43° 20.668' N	122° 40.781' W
Safety Zone	1	43° 17.631' N	122° 34.596' W
Safety Zone	1	43° 17.259' N	122° 33.201' W
Drop Point	31	43° 19.080' N	122° 33.557' W
Mobile Weather Unit	CMD 7	43° 17.219' N	122° 33.143' W
Repeater	Div P	43° 25.139' N	122° 40.775' W
Division Break	96	43° 16.759' N	122° 44.350' W
Drop Point	6	43° 18.174' N	122° 40.852' W
Repeater	Tac 12	43° 17.572' N	122° 35.949' W
Helispot	9	43° 16.563' N	122° 43.683' W
Drop Point	61	43° 17.446' N	122° 33.885' W
Division Break	Div D	43° 19.780' N	122° 38.685' W
Dip Site	8	43° 17.342' N	122° 35.521' W
Helispot	8	43° 14.169' N	122° 42.625' W
Bridge	8	43° 17.163' N	122° 35.293' W

**Branch I**

**Div A**

**Div Z**

Map features include: Illahee Flats Substation, Tac 12, and various roads like HWY 138 and HWY 96. Contour lines and water bodies are also visible.

FC Point Type	Label	Latitude WGS84	Longitude WGS84
Bridge	90	43° 17.149' N	122° 34.653' W
Drop Point	90	43° 14.745' N	122° 43.010' W
Drop Point	91	43° 16.787' N	122° 44.348' W
Drop Point	67	43° 17.474' N	122° 37.167' W
Drop Point	68	43° 14.695' N	122° 35.987' W
Drop Point	69	43° 14.950' N	122° 36.265' W
Structure Wrap	90	43° 15.140' N	122° 43.545' W
Water Source	90	43° 13.603' N	122° 41.000' W
Water Source	90	43° 13.424' N	122° 41.966' W
Check Point	90	43° 24.635' N	122° 36.729' W
Check Point	90	43° 19.502' N	122° 48.395' W
Drop Point	86	43° 13.492' N	122° 41.076' W
Water Source	90	43° 17.830' N	122° 42.865' W
Dozer Push	90	43° 13.652' N	122° 41.777' W
Repair Point	90	43° 20.818' N	122° 42.165' W