

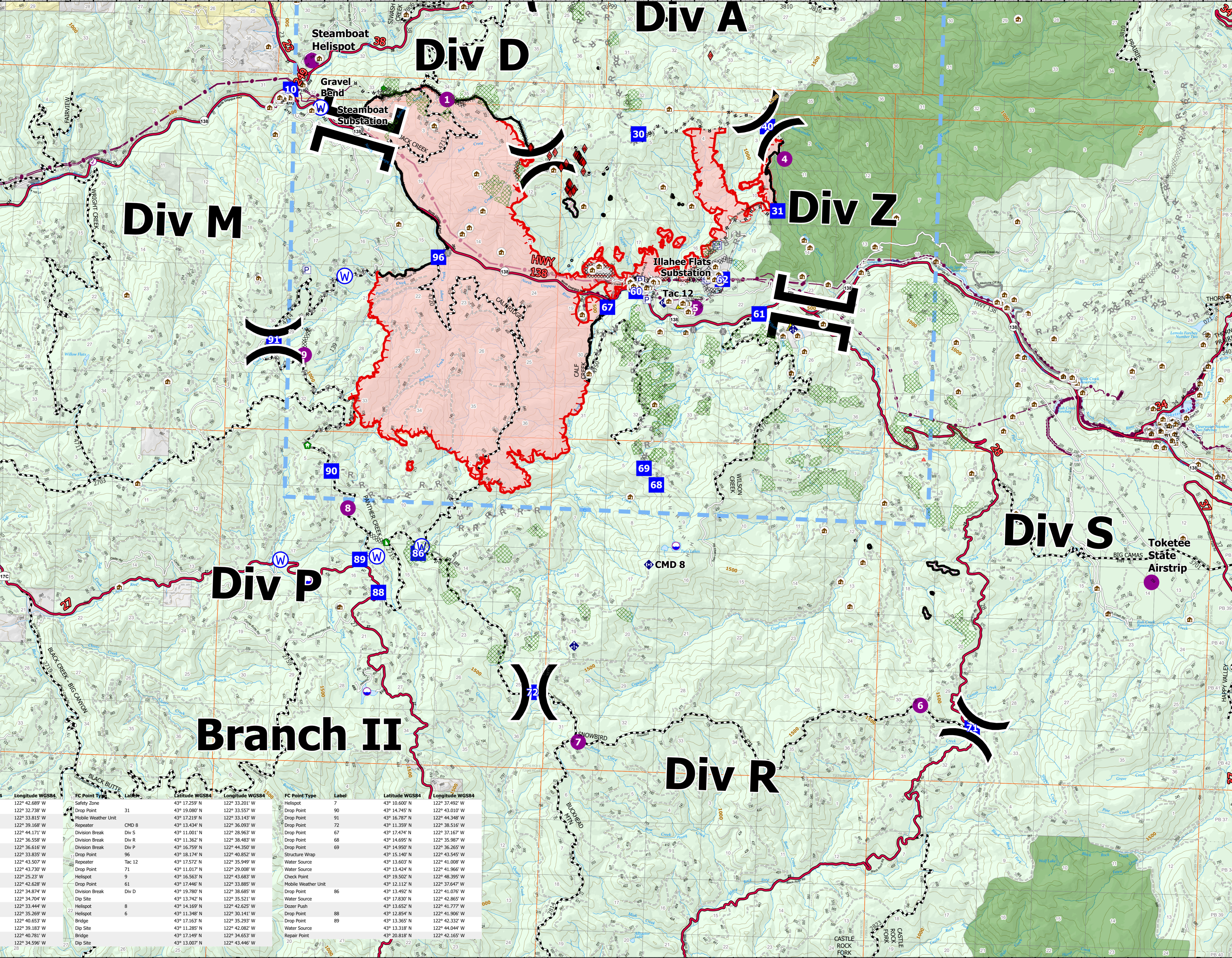
Operations Map

Branch II

Jack Fire
OR-UPF-000265
07/14/2021 - 24hr
13907 acres at 07/13/2021 2000

FC Point Type	Label	Latitude WGS84	Longitude WGS84	FC Point Type	Label	Latitude WGS84	Longitude WGS84
Branch Break	Branch II	43° 20.142' N	122° 42.689' W	Safety Zone	31	43° 17.259' N	122° 33.201' W
Branch Break	Branch I	43° 17.489' N	122° 32.738' W	Mobile Weather Unit	CMD 8	43° 19.080' N	122° 33.557' W
Division Break	Div A	43° 20.423' N	122° 33.815' W	Repeater	7	43° 17.219' N	122° 33.143' W
Drop Point	10	43° 22.600' N	122° 39.168' W	Division Break	Div S	43° 13.434' N	122° 36.093' W
Drop Point	60	43° 20.746' N	122° 44.171' W	Division Break	Div R	43° 11.001' N	122° 38.963' W
Drop Point	30	43° 17.739' N	122° 36.558' W	Division Break	Div P	43° 11.362' N	122° 38.483' W
Drop Point	40	43° 20.223' N	122° 36.616' W	Drop Point	96	43° 16.759' N	122° 44.350' W
Drop Point	20	43° 20.405' N	122° 33.835' W	Drop Point	67	43° 18.174' N	122° 40.852' W
Water Source	Gravel Bend	43° 20.475' N	122° 43.507' W	Repeater	Tac 12	43° 17.572' N	122° 35.949' W
Helispot	Steamboat Helispot	43° 21.210' N	122° 43.730' W	Drop Point	71	43° 11.017' N	122° 29.008' W
Helispot	Toketee State Airstrip	43° 13.40' N	122° 25.23' W	Water Source	9	43° 16.563' N	122° 43.683' W
Value at Risk	Steamboat Substation	43° 20.152' N	122° 42.628' W	Drop Point	61	43° 11.017' N	122° 29.008' W
Drop Point	62	43° 17.973' N	122° 34.704' W	Division Break	Div D	43° 19.780' N	122° 38.685' W
Helispot	4	43° 19.902' N	122° 33.444' W	Dip Site	8	43° 13.742' N	122° 35.521' W
Helispot	5	43° 17.507' N	122° 35.269' W	Helispot	6	43° 11.348' N	122° 30.141' W
Bridge	20	43° 18.244' N	122° 40.653' W	Bridge	8	43° 17.163' N	122° 40.653' W
Drop Point	1	43° 22.600' N	122° 39.183' W	Dip Site	20	43° 11.285' N	122° 42.082' W
Helispot	1	43° 20.668' N	122° 40.781' W	Bridge	1	43° 17.149' N	122° 34.653' W
Safety Zone	1	43° 17.631' N	122° 34.596' W	Dip Site	20	43° 13.007' N	122° 43.446' W

North American 83 Datum, Unit: Feet



43°17'N 43°15'N 43°13'N 43°11'N 43°9'N 43°7'N 43°5'N 43°3'N 43°1'N

122°55'W 122°54'W 122°53'W 122°52'W 122°51'W 122°50'W 122°49'W 122°48'W 122°47'W 122°46'W 122°45'W 122°44'W 122°43'W 122°42'W 122°41'W 122°40'W 122°39'W 122°38'W 122°37'W 122°36'W 122°35'W 122°34'W 122°33'W 122°32'W 122°31'W 122°30'W 122°29'W 122°28'W 122°27'W 122°26'W 122°25'W 122°24'W 122°23'W