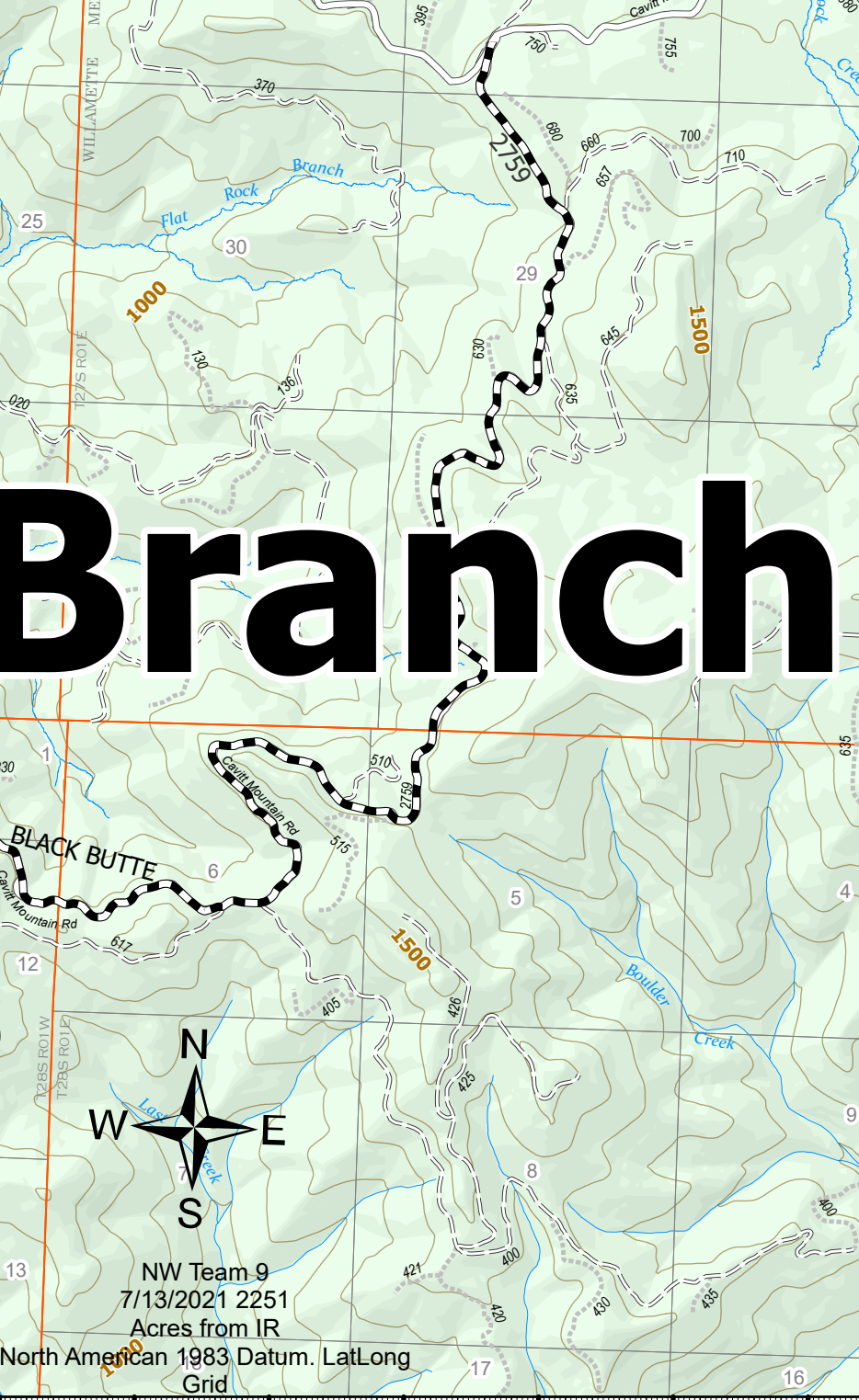
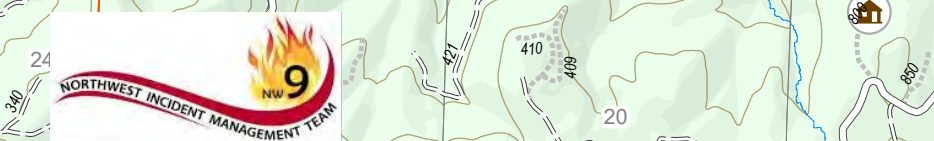


Operations Map
Div R & S
 Jack Fire
 OR-UPF-000265
 07/14/2021 - 24hr
 13907 acres at 07/13/2021 2000



- JackFireStructures_pt
- ATP
- Pump
- Water Tank
- Dip Site
- Helispot
- Wildfire Daily Fire Perimeter
- Contours 100ft
- Calif_Units
- CC_Alternative_Final_Units
- DryUnits
- JackFinalUnits
- Area to Protect (ATP)
- Land Ownership
- PV
- <all other values>
- Forest Service Land
- Wilderness
- Protracted Section
- Section
- Township
- HIFLD Roads
- Primary Highway
- Secondary Highway
- Paved Roads
- Dirt (Not Paved)
- Interstate Not Paved
- US Route Not Paved
- Forest Service Roads
- Paved Road
- Gravel Road
- Dirt Roads
- Unimproved Roads
- Unspecified
- Closed Roads
- <all other values>
- NHDWaterbody
- FCode
- Lake / Pond
- Lake / Pond (Intermittent)
- Reservoir
- NHDFlowline
- FCode
- Stream/River
- Road
- A - Arterial
- C - Collector
- Utility Power Lines
- Completed Dozer Line
- Completed Hand Line
- Completed Road as Line
- Planned Dozer Line
- Planned Hand Line
- Planned Road as Line
- Temporary Flight Restriction
- Fire Edge
- Contained Line



Branch II

Div R

Div Z

Div S

FC Point Type	Label	Latitude WGS84	Longitude WGS84	FC Point Type	Label	Latitude WGS84	Longitude WGS84	FC Point Type	Label	Latitude WGS84	Longitude WGS84
Branch Break	Branch I	43° 17.489' N	122° 32.738' W	Drop Point	96	43° 18.174' N	122° 40.852' W	Drop Point	72	43° 11.359' N	122° 38.516' W
Drop Point	60	43° 17.739' N	122° 36.558' W	Repeater	Tac 12	43° 17.572' N	122° 35.949' W	Drop Point	67	43° 17.474' N	122° 37.167' W
Helispot	Toketee State Airstrip	43° 13.40' N	122° 25.23' W	Drop Point	71	43° 11.017' N	122° 29.008' W	Drop Point	69	43° 14.695' N	122° 35.987' W
Value at Risk	Illahee Flats Substation	43° 17.963' N	122° 34.874' W	Helispot	9	43° 16.563' N	122° 43.683' W	Drop Point	68	43° 14.953' N	122° 36.265' W
Drop Point	62	43° 17.973' N	122° 34.704' W	Drop Point	61	43° 17.446' N	122° 33.885' W	Structure Wrap	43° 15.140' N	122° 43.545' W	
Helispot	4	43° 19.902' N	122° 33.444' W	Division Break	Div D	43° 19.780' N	122° 38.685' W	Water Source	43° 13.603' N	122° 41.008' W	
Helispot	5	43° 17.507' N	122° 35.269' W	Dip Site	8	43° 13.742' N	122° 35.521' W	Water Source	43° 13.424' N	122° 41.966' W	
Safety Zone	31	43° 18.244' N	122° 40.653' W	Helispot	6	43° 14.169' N	122° 42.625' W	Mobile Weather Unit	43° 12.112' N	122° 37.647' W	
Safety Zone	31	43° 17.631' N	122° 34.596' W	Helispot	6	43° 11.348' N	122° 30.141' W	Drop Point	86	43° 13.492' N	122° 41.076' W
Mobile Weather Unit	CMD 8	43° 17.259' N	122° 33.201' W	Bridge	31	43° 17.163' N	122° 35.293' W	Water Source	43° 17.830' N	122° 42.865' W	
Drop Point	31	43° 19.080' N	122° 33.557' W	Dip Site	31	43° 11.285' N	122° 42.062' W	Dozer Push	43° 13.652' N	122° 41.777' W	
Repeater	CMD 8	43° 17.219' N	122° 33.145' W	Bridge	88	43° 17.149' N	122° 34.653' W	Drop Point	88	43° 12.854' N	122° 41.906' W
Division Break	Div S	43° 13.404' N	122° 36.093' W	Dip Site	89	43° 13.007' N	122° 33.446' W	Drop Point	89	43° 13.355' N	122° 42.332' W
Division Break	Div R	43° 11.001' N	122° 28.963' W	Helispot	7	43° 10.600' N	122° 37.492' W	Water Source	43° 13.318' N	122° 44.044' W	
Division Break	Div P	43° 11.362' N	122° 38.483' W	Drop Point	90	43° 14.745' N	122° 43.010' W				
Division Break	Div Z	43° 16.759' N	122° 44.350' W	Drop Point	91	43° 16.787' N	122° 44.348' W				