

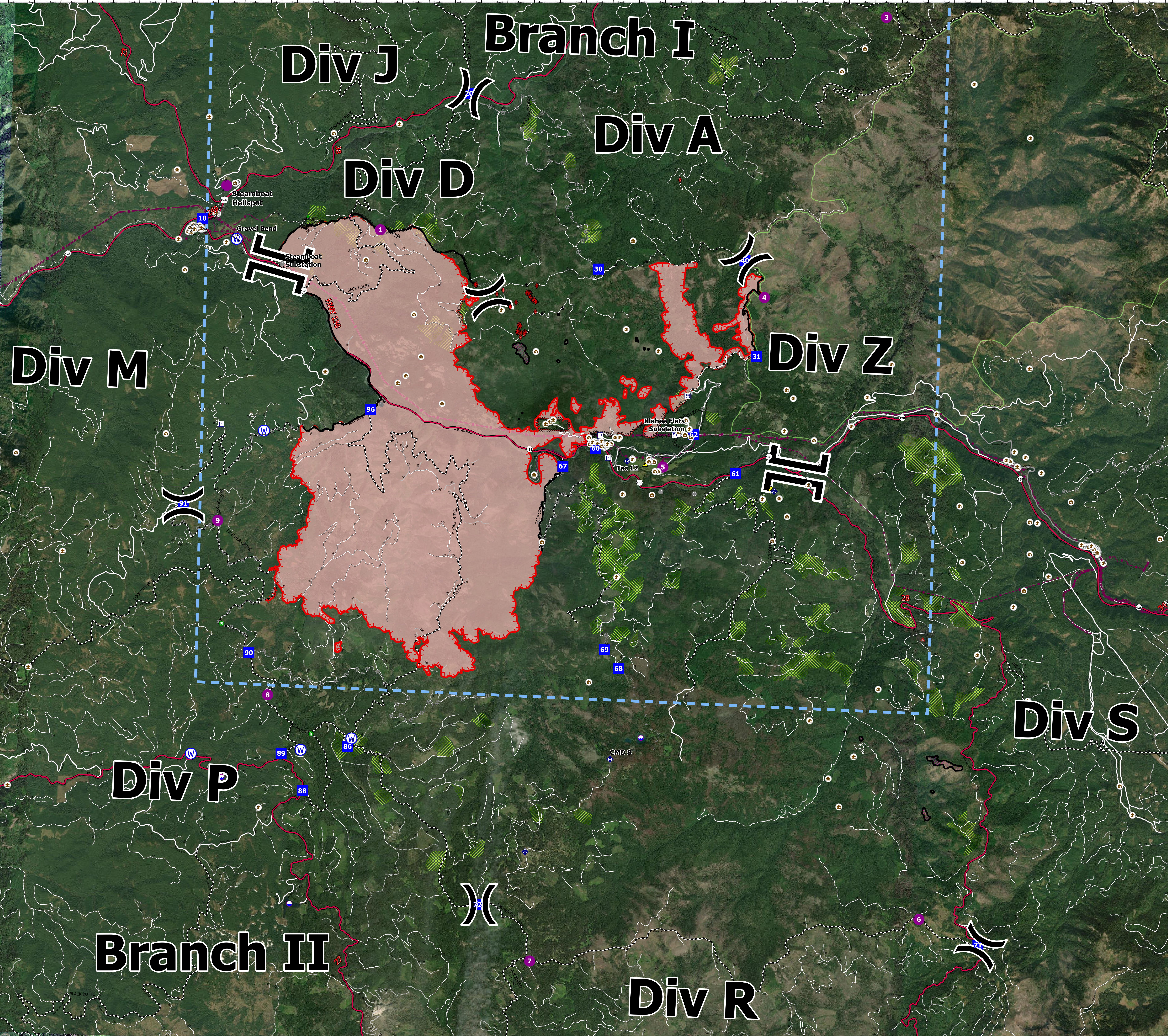
# Operations Map

Jack Fire  
OR-UPF-000265  
07/14/2021 - 24hr

13907 acres at 07/13/2021 2000

**Legend**

- JackFireStructures\_pt
- ATP
- Pump
- Water Tank
- Check Point
- Dip Site
- Helispot
- Completed Dozer Line
- Completed Hand Line
- Completed Road as Line
- Planned Dozer Line
- Planned Hand Line
- Planned Road as Line
- Retardant Drop
- Temporary Flight Restriction
- Fire Edge
- Contained Line
- Wildfire Daily Fire Perimeter
- Utility Power Lines
- Colf\_Units
- CC\_Alternative\_Final\_Units
- DryUnits
- JackFireUnits
- Area to Protect (ATP)
- Wilderness
- Forest Service Roads
- Branch Break
- Drop Point
- Value at Risk
- Bridge
- Structure Wrap
- Repair Point
- Dozer Push
- Mobile Weather Unit
- Repeater
- Safety Zone
- Water Source
- Completed Dozer Line
- Completed Hand Line
- Completed Road as Line
- Planned Dozer Line
- Planned Hand Line
- Planned Road as Line
- Retardant Drop
- Temporary Flight Restriction
- Fire Edge
- Contained Line
- Wildfire Daily Fire Perimeter
- Utility Power Lines
- Colf\_Units
- CC\_Alternative\_Final\_Units
- DryUnits
- JackFireUnits
- Area to Protect (ATP)
- Wilderness
- Forest Service Roads
- Branch Break
- Drop Point
- Value at Risk
- Bridge
- Structure Wrap
- Repair Point
- Dozer Push
- Mobile Weather Unit
- Repeater
- Safety Zone
- Water Source
- Primary Highway
- Secondary Highway
- Paved Roads
- Dirt (Not Paved)
- Interstate Not Paved
- US Route Not Paved
- A - Arterial
- C - Collector



FC Point Type	Label	Latitude WGS84	Longitude WGS84
Branch Break	Branch II	43° 20.147' N	122° 42.687' W
Branch Break	Branch I	43° 18.899' N	122° 43.723' W
Division Break	Div A	43° 20.423' N	122° 39.815' W
Division Break	Div J	43° 22.600' N	122° 39.168' W
Drop Point	10	43° 20.740' N	122° 44.171' W
Drop Point	60	43° 17.799' N	122° 36.958' W
Drop Point	30	43° 20.223' N	122° 36.616' W
Drop Point	40	43° 20.405' N	122° 33.835' W
Water Source	Gravel Bend	43° 20.473' N	122° 35.520' W
Helispot	Steamboat Helispot	43° 21.210' N	122° 43.730' W
Helispot	Toilette State Airstrip	43° 13.407' N	122° 25.237' W
Value at Risk	Steamboat Substation	43° 20.152' N	122° 42.628' W
Value at Risk	Illahee Flats Substation	43° 17.863' N	122° 44.878' W
Drop Point	62	43° 17.973' N	122° 34.704' W
Helispot	4	43° 19.902' N	122° 33.444' W
Helispot	5	43° 17.307' N	122° 35.269' W
Drop Point	20	43° 18.244' N	122° 36.653' W
Drop Point	20	43° 22.600' N	122° 39.183' W
Helispot	3	43° 23.838' N	122° 31.292' W
Helispot	1	43° 20.559' N	122° 46.781' W
Safety Zone	31	43° 17.631' N	122° 34.596' W
Safety Zone	31	43° 17.259' N	122° 33.201' W
Drop Point	31	43° 19.080' N	122° 33.557' W
Mobile Weather Unit	31	43° 18.215' N	122° 33.143' W
Repeater	CMD 8	43° 13.434' N	122° 36.093' W
Division Break	Div S	43° 11.001' N	122° 28.963' W
Division Break	Div R	43° 11.362' N	122° 36.963' W
Division Break	Div P	43° 14.799' N	122° 44.350' W
Drop Point	96	43° 18.174' N	122° 40.852' W
Repeater	Tac 12	43° 17.572' N	122° 35.949' W
Drop Point	71	43° 15.013' N	122° 39.068' W
Helispot	9	43° 16.563' N	122° 43.683' W
Drop Point	61	43° 17.446' N	122° 33.885' W
Division Break	Div D	43° 19.780' N	122° 38.685' W
Dip Site	8	43° 13.742' N	122° 35.523' W
Helispot	8	43° 14.169' N	122° 42.625' W
Helispot	6	43° 11.348' N	122° 30.141' W
Bridge	7	43° 17.163' N	122° 35.293' W
Dip Site	7	43° 13.285' N	122° 42.680' W
Bridge	7	43° 17.149' N	122° 34.653' W
Dip Site	7	43° 13.007' N	122° 43.446' W
Helispot	7	43° 16.600' N	122° 39.490' W
Drop Point	90	43° 14.740' N	122° 43.010' W
Drop Point	91	43° 16.787' N	122° 44.348' W
Drop Point	72	43° 11.359' N	122° 38.516' W
Drop Point	67	43° 11.474' N	122° 31.767' W
Drop Point	68	43° 14.695' N	122° 35.987' W
Drop Point	69	43° 14.950' N	122° 36.265' W
Structure Wrap	88	43° 15.140' N	122° 43.545' W
Water Source	88	43° 13.603' N	122° 41.908' W
Water Source	89	43° 13.424' N	122° 41.966' W
Check Point	88	43° 19.502' N	122° 48.395' W
Mobile Weather Unit	86	43° 11.112' N	122° 36.979' W
Drop Point	86	43° 13.492' N	122° 41.076' W
Water Source	88	43° 17.830' N	122° 42.865' W
Dozer Push	88	43° 13.652' N	122° 41.777' W
Drop Point	88	43° 13.854' N	122° 41.896' W
Drop Point	89	43° 13.365' N	122° 42.332' W
Water Source	89	43° 13.318' N	122° 44.044' W
Repair Point	89	43° 20.818' N	122° 42.165' W