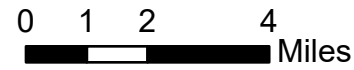


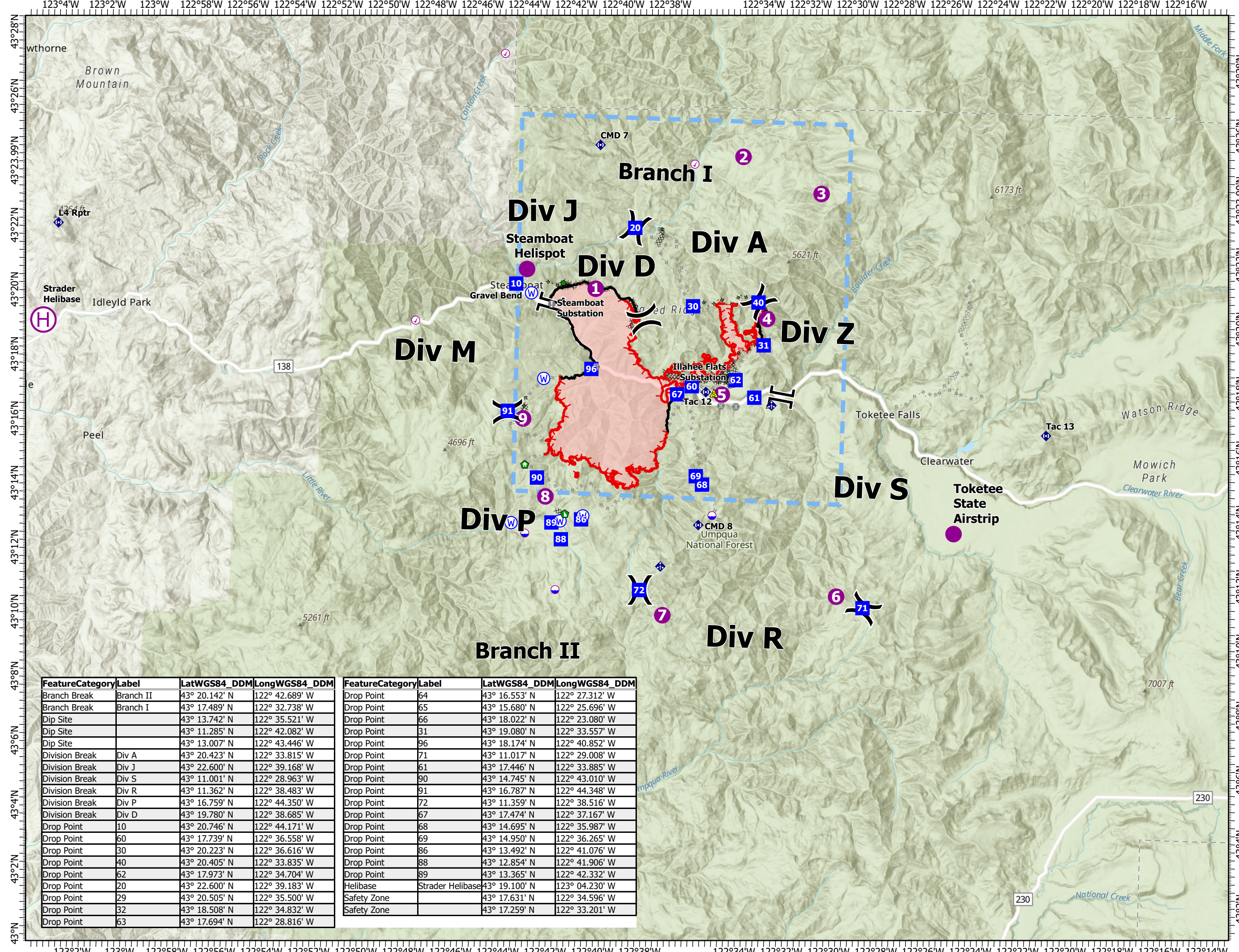
Pilots Map

Jack Fire
OR-UPF-000265
07/14/2021 - 24hr

13907 acres at 07/13/2021 2000



- Wildfire Daily Fire Perimeter
- Completed Dozer Line
- Completed Hand Line
- Completed Road as Line
- Planned Dozer Line
- Planned Hand Line
- Planned Road as Line
- Retardant Drop
- Temporary Flight Restriction
- Fire Edge
- Contained Line
- Check Point
- Dip Site
- Helispot
- Helibase
- Division Break
- Branch Break
- Incident Command Post
- Drop Point
- Value at Risk
- Bridge
- Structure Wrap
- Repair Point
- Dozer Push
- Mobile Weather Unit
- Repeater
- Safety Zone
- Water Source
- Completed Dozer Line
- Completed Hand Line
- Completed Road as Line
- Planned Dozer Line
- Planned Hand Line
- Planned Road as Line
- Retardant Drop
- Temporary Flight Restriction
- Fire Edge
- Contained Line
- Wildfire Daily Fire Perimeter



FeatureCategory	Label	LatWGS84_DDM	LongWGS84_DDM
Branch Break	Branch II	43° 20.142' N	122° 42.689' W
Branch Break	Branch I	43° 17.489' N	122° 32.738' W
Dip Site		43° 13.742' N	122° 35.521' W
Dip Site		43° 11.285' N	122° 42.082' W
Dip Site		43° 13.007' N	122° 43.446' W
Division Break	Div A	43° 20.423' N	122° 33.815' W
Division Break	Div J	43° 22.600' N	122° 39.168' W
Division Break	Div S	43° 11.001' N	122° 28.963' W
Division Break	Div R	43° 11.362' N	122° 38.483' W
Division Break	Div P	43° 16.759' N	122° 44.350' W
Division Break	Div D	43° 19.780' N	122° 38.685' W
Drop Point	10	43° 20.746' N	122° 44.171' W
Drop Point	60	43° 17.739' N	122° 36.558' W
Drop Point	30	43° 20.223' N	122° 36.616' W
Drop Point	40	43° 20.405' N	122° 33.835' W
Drop Point	62	43° 17.973' N	122° 34.704' W
Drop Point	20	43° 22.600' N	122° 39.183' W
Drop Point	29	43° 20.505' N	122° 35.500' W
Drop Point	32	43° 18.508' N	122° 34.832' W
Drop Point	63	43° 17.694' N	122° 28.816' W

FeatureCategory	Label	LatWGS84_DDM	LongWGS84_DDM
Drop Point	64	43° 16.553' N	122° 27.312' W
Drop Point	65	43° 15.680' N	122° 25.696' W
Drop Point	66	43° 18.022' N	122° 23.080' W
Drop Point	31	43° 19.080' N	122° 33.557' W
Drop Point	96	43° 18.174' N	122° 40.852' W
Drop Point	71	43° 11.017' N	122° 29.008' W
Drop Point	61	43° 17.446' N	122° 33.885' W
Drop Point	90	43° 14.745' N	122° 43.010' W
Drop Point	91	43° 16.787' N	122° 44.348' W
Drop Point	72	43° 11.359' N	122° 38.516' W
Drop Point	67	43° 17.474' N	122° 37.167' W
Drop Point	68	43° 14.695' N	122° 35.987' W
Drop Point	69	43° 14.950' N	122° 36.265' W
Drop Point	86	43° 13.492' N	122° 41.076' W
Drop Point	88	43° 12.854' N	122° 41.906' W
Drop Point	89	43° 13.365' N	122° 42.332' W
Helibase	Strader Helibase	43° 19.100' N	123° 04.230' W
Safety Zone		43° 17.631' N	122° 34.596' W
Safety Zone		43° 17.259' N	122° 33.201' W



NW Team 9
7/13/2021 2209
Acres from IR
North American 1983 Datum. LatLong Grid