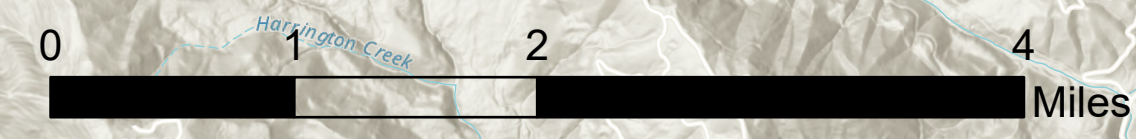


Pilots Map

Jack Fire
OR-UPF-000265
07/14/2021 - 24hr

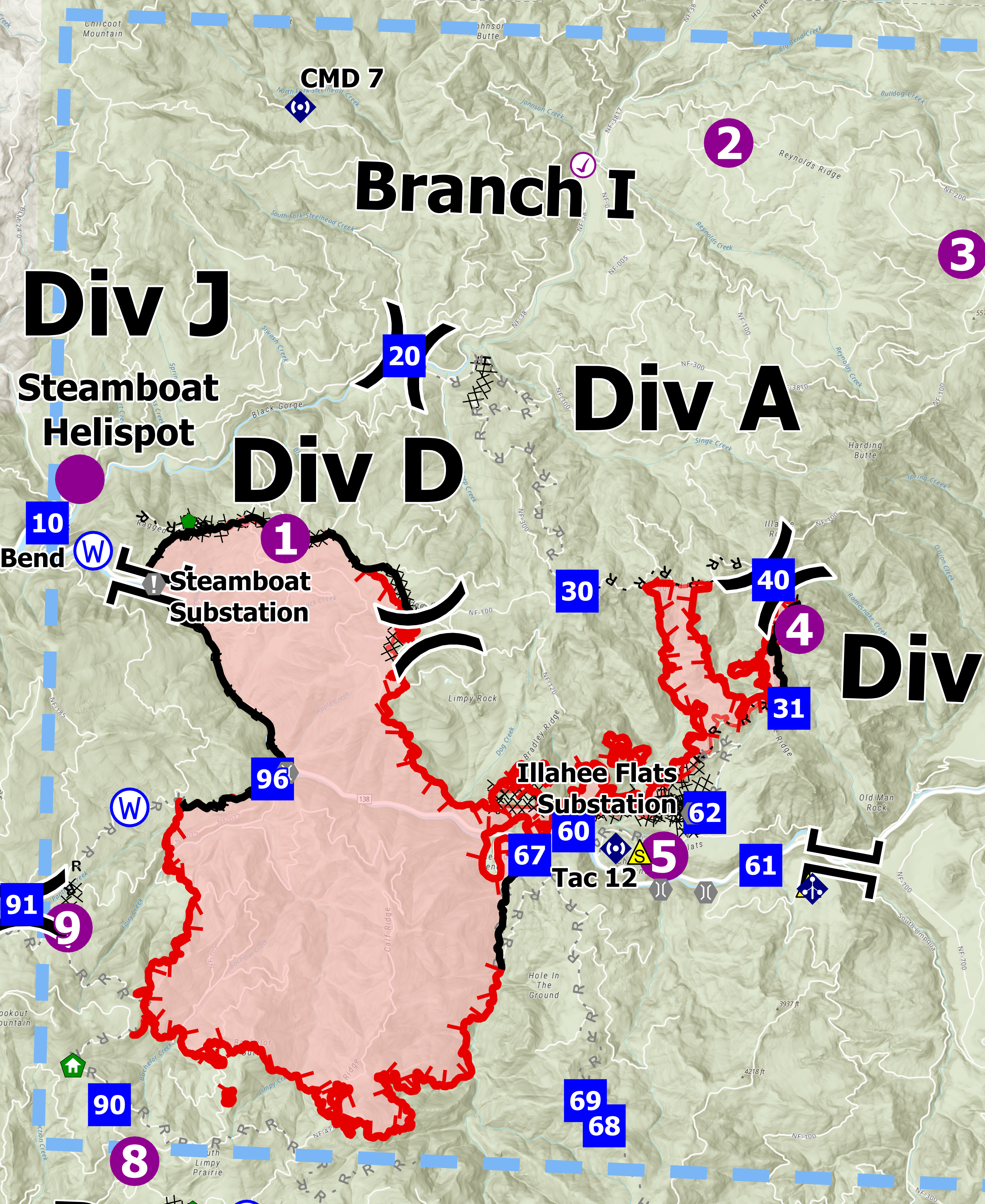
13907 acres at 07/13/2021 2000



- Wildfire Daily Fire Perimeter
- Completed Dozer Line
- Completed Hand Line
- Completed Road as Line
- Planned Dozer Line
- Planned Hand Line
- Planned Road as Line
- Retardant Drop
- Temporary Flight Restriction
- Fire Edge
- Contained Line
- Check Point
- Dip Site
- Helispot
- Division Break
- Branch Break
- Drop Point
- Value at Risk
- Bridge
- Structure Wrap
- Repair Point
- Dozer Push
- Mobile Weather Unit
- Repeater
- Safety Zone
- Water Source
- Completed Dozer Line
- Completed Hand Line
- Completed Road as Line
- Planned Dozer Line
- Planned Hand Line
- Planned Road as Line
- Retardant Drop
- Temporary Flight Restriction
- Fire Edge
- Contained Line
- Wildfire Daily Fire Perimeter



NW Team 9
7/13/2021 2314
Acres from IR
North American 1983 Datum. Lat/Long Grid



Feature	Category	Label	Comments	LatWGS84_DDM	LongWGS84_DDM
Branch Break	Branch I	Div J/MBreak		43° 20.142' N	122° 42.689' W
Branch Break	Branch I	Div 5/2 Break		43° 17.499' N	122° 32.730' W
Dip Site		Twin Lakes, approved		43° 18.742' N	122° 26.521' W
Dip Site		Hemlock Lake, approved		43° 11.289' N	122° 42.082' W
Dip Site		Lake of the Woods, approved		43° 11.007' N	122° 43.446' W
Division Break	Div A	A/D2 Break		43° 24.423' N	122° 31.833' W
Division Break	Div J	A/J Break		43° 22.600' N	122° 39.168' W
Division Break	Div S	S/R Break		43° 11.001' N	122° 28.967' W
Division Break	Div N	N/P Break		43° 11.363' N	122° 26.483' W
Division Break	Div P	P/R Break		43° 16.759' N	122° 44.359' W
Division Break	Div D	Div D/A Break		43° 19.780' N	122° 38.685' W
Drop Point		10		43° 20.746' N	122° 44.171' W
Drop Point		60		43° 19.759' N	122° 36.610' W
Drop Point		30		43° 20.223' N	122° 36.610' W
Drop Point		40		43° 20.409' N	122° 33.830' W
Drop Point		63	DP 63	43° 19.973' N	122° 34.708' W
Drop Point		20		43° 23.600' N	122° 39.183' W
Drop Point		29	DP 29	43° 20.507' N	122° 35.500' W
Drop Point		32		43° 18.508' N	122° 34.832' W
Drop Point		63		43° 19.084' N	122° 28.810' W
Drop Point		64		43° 16.537' N	122° 27.312' W
Drop Point		65		43° 15.680' N	122° 25.696' W
Drop Point		66		43° 18.022' N	122° 25.080' W
Drop Point		31	DP 31	43° 19.080' N	122° 31.557' W
Drop Point		96	DP 96	43° 18.174' N	122° 40.857' W
Drop Point		71	DP 71	43° 11.031' N	122° 29.008' W
Drop Point		61	DP 61	43° 17.446' N	122° 33.885' W
Drop Point		90		43° 14.749' N	122° 43.019' W
Drop Point		91		43° 16.767' N	122° 44.340' W
Drop Point		72		43° 19.359' N	122° 36.510' W
Drop Point		67		43° 17.474' N	122° 37.167' W
Drop Point		68		43° 14.699' N	122° 36.987' W
Drop Point		69		43° 14.959' N	122° 36.267' W
Drop Point		86		43° 13.492' N	122° 41.076' W
Drop Point		88		43° 12.854' N	122° 41.900' W
Drop Point		89		43° 13.367' N	122° 43.330' W
Safety Zone		88		43° 17.613' N	122° 34.596' W
Safety Zone		89		43° 17.259' N	122° 33.201' W