

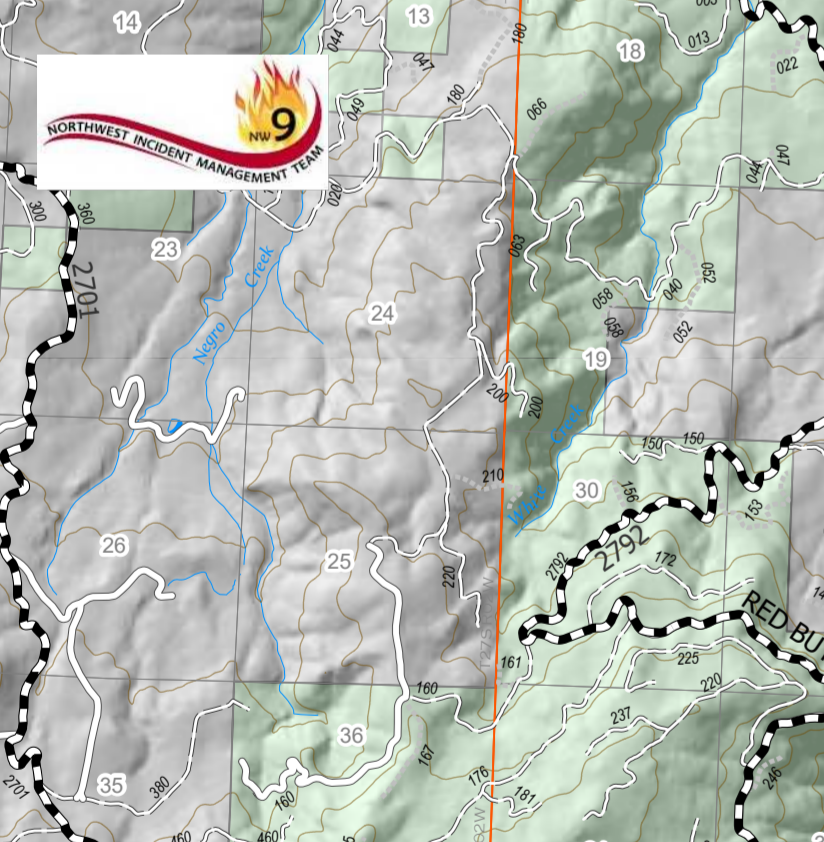
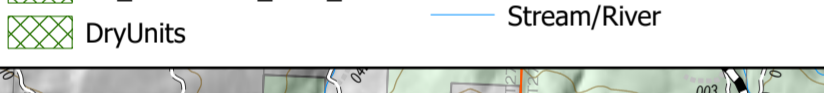
# Operations Map

## Branch II

Jack Fire  
OR-UPF-000265  
07/15/2021 - 24hr  
15691 acres at 07/14/2021 2353



- JackFireStructures\_pt
- JackFinalUnits
- ATP
- Area to Protect (ATP)
- Other Property
- Pump
- Water Tank
- Check Point
- Dip Site
- Mobile Retardant Base
- Helispot
- Sling Site
- Division Break
- Branch Break
- Drop Point
- Camp
- Value at Risk
- Bridge
- Structure Wrap
- Repair Point
- Dozer Push
- Mobile Weather Unit
- Repeater
- Safety Zone
- Water Source
- Completed Dozer Line
- Completed Hand Line
- Completed Road as Line
- Planned Dozer Line
- Planned Hand Line
- Planned Road as Line
- Closed Road
- Retardant Drop
- Temporary Flight Restriction
- Fire Edge
- Contained Line
- Wildfire Daily Fire Perimeter
- Utility Power Lines
- Contours 100ft
- Roadless Areas Inventoried
- Calif\_Units
- CC\_Alternative\_Final\_Units
- DryUnits
- BLM
- PV
- <all other values>
- Forest Service Land
- Wilderness
- Protracted Section
- Section
- Township
- A - Arterial
- C - Collector
- Primary Highway
- Secondary Highway
- Paved Roads
- Dirt (Not Paved)
- Interstate Not Paved
- US Route Not Paved
- Paved Road
- Gravel Road
- Dirt Roads
- Unimproved Roads
- Unspecified
- Closed Roads
- <all other values>
- FCode
- Lake / Pond
- Lake / Pond (Intermittent)
- Reservoir
- NHDFlowline
- Stream/River



FC Point #	Label	Latitude WGS84	Longitude WGS84	FC Point Type	Label	Latitude WGS84	Longitude WGS84	FC Point Type	Label	Latitude WGS84	Longitude WGS84
Branch II	Branch II	43° 20.142' N	122° 42.687' W	Safety Zone	91	43° 16.787' N	122° 44.300' W	Drop Point	91	43° 16.787' N	122° 44.300' W
Branch I	Branch I	43° 17.482' N	122° 32.778' W	Safety Zone	68	43° 14.695' N	122° 35.967' W	Drop Point	68	43° 14.695' N	122° 35.967' W
Div A	Div A	43° 20.423' N	122° 33.815' W	Drop Point	67	43° 17.474' N	122° 37.167' W	Drop Point	67	43° 17.474' N	122° 37.167' W
Div J	Div J	43° 22.600' N	122° 33.143' W	Drop Point	69	43° 14.950' N	122° 36.265' W	Drop Point	69	43° 14.950' N	122° 36.265' W
Div K	Div K	43° 20.746' N	122° 44.171' W	Drop Point	66	43° 15.140' N	122° 43.545' W	Drop Point	66	43° 15.140' N	122° 43.545' W
Div L	Div L	43° 17.239' N	122° 36.558' W	Drop Point	65	43° 13.424' N	122° 41.966' W	Drop Point	65	43° 13.424' N	122° 41.966' W
Div M	Div M	43° 20.223' N	122° 36.636' W	Drop Point	64	43° 13.603' N	122° 41.000' W	Drop Point	64	43° 13.603' N	122° 41.000' W
Div N	Div N	43° 20.405' N	122° 33.835' W	Drop Point	63	43° 12.112' N	122° 37.647' W	Drop Point	63	43° 12.112' N	122° 37.647' W
Div O	Div O	43° 20.475' N	122° 43.507' W	Drop Point	62	43° 19.502' N	122° 48.395' W	Drop Point	62	43° 19.502' N	122° 48.395' W
Div P	Div P	43° 21.210' N	122° 43.730' W	Drop Point	89	43° 13.365' N	122° 42.332' W	Drop Point	89	43° 13.365' N	122° 42.332' W
Div Q	Div Q	43° 17.239' N	122° 36.558' W	Drop Point	71	43° 11.011' N	122° 40.008' W	Drop Point	71	43° 11.011' N	122° 40.008' W
Div R	Div R	43° 20.152' N	122° 42.628' W	Drop Point	86	43° 13.927' N	122° 41.076' W	Drop Point	86	43° 13.927' N	122° 41.076' W
Div S	Div S	43° 17.963' N	122° 34.874' W	Drop Point	61	43° 17.830' N	122° 42.865' W	Drop Point	61	43° 17.830' N	122° 42.865' W
Div T	Div T	43° 17.973' N	122° 34.704' W	Drop Point	60	43° 13.652' N	122° 41.777' W	Drop Point	60	43° 13.652' N	122° 41.777' W
Div U	Div U	43° 19.902' N	122° 33.444' W	Drop Point	70	43° 13.318' N	122° 44.044' W	Drop Point	70	43° 13.318' N	122° 44.044' W
Div V	Div V	43° 17.507' N	122° 35.269' W	Drop Point	72	43° 09.815' N	122° 40.324' W	Drop Point	72	43° 09.815' N	122° 40.324' W
Div W	Div W	43° 18.244' N	122° 40.653' W	Drop Point	73	43° 17.163' N	122° 35.282' W	Drop Point	73	43° 17.163' N	122° 35.282' W
Div X	Div X	43° 22.600' N	122° 39.183' W	Drop Point	8	43° 14.173' N	122° 42.625' W	Drop Point	8	43° 14.173' N	122° 42.625' W
Div Y	Div Y	43° 22.600' N	122° 39.183' W	Drop Point	6	43° 11.348' N	122° 30.141' W	Drop Point	6	43° 11.348' N	122° 30.141' W
Div Z	Div Z	43° 20.505' N	122° 35.500' W	Drop Point	7	43° 13.742' N	122° 35.521' W	Drop Point	7	43° 13.742' N	122° 35.521' W
Div AA	Div AA	43° 18.508' N	122° 34.832' W	Drop Point	31	43° 11.285' N	122° 42.082' W	Drop Point	31	43° 11.285' N	122° 42.082' W
Div AB	Div AB	43° 17.698' N	122° 38.816' W	Drop Point	64	43° 16.553' N	122° 37.312' W	Drop Point	64	43° 16.553' N	122° 37.312' W
Div AC	Div AC	43° 16.553' N	122° 37.312' W	Drop Point	65	43° 15.680' N	122° 37.492' W	Drop Point	65	43° 15.680' N	122° 37.492' W
Div AD	Div AD	43° 15.680' N	122° 37.492' W	Drop Point	7	43° 10.600' N	122° 37.492' W	Drop Point	7	43° 10.600' N	122° 37.492' W
Div AE	Div AE	43° 18.022' N	122° 23.080' W	Drop Point	72	43° 11.359' N	122° 38.516' W	Drop Point	72	43° 11.359' N	122° 38.516' W
Div AF	Div AF	43° 20.668' N	122° 40.781' W	Drop Point	90	43° 14.745' N	122° 43.010' W	Drop Point	90	43° 14.745' N	122° 43.010' W

