

# Operations Map

Jack Fire  
OR-UPF-000265  
07/15/2021 - 24hr

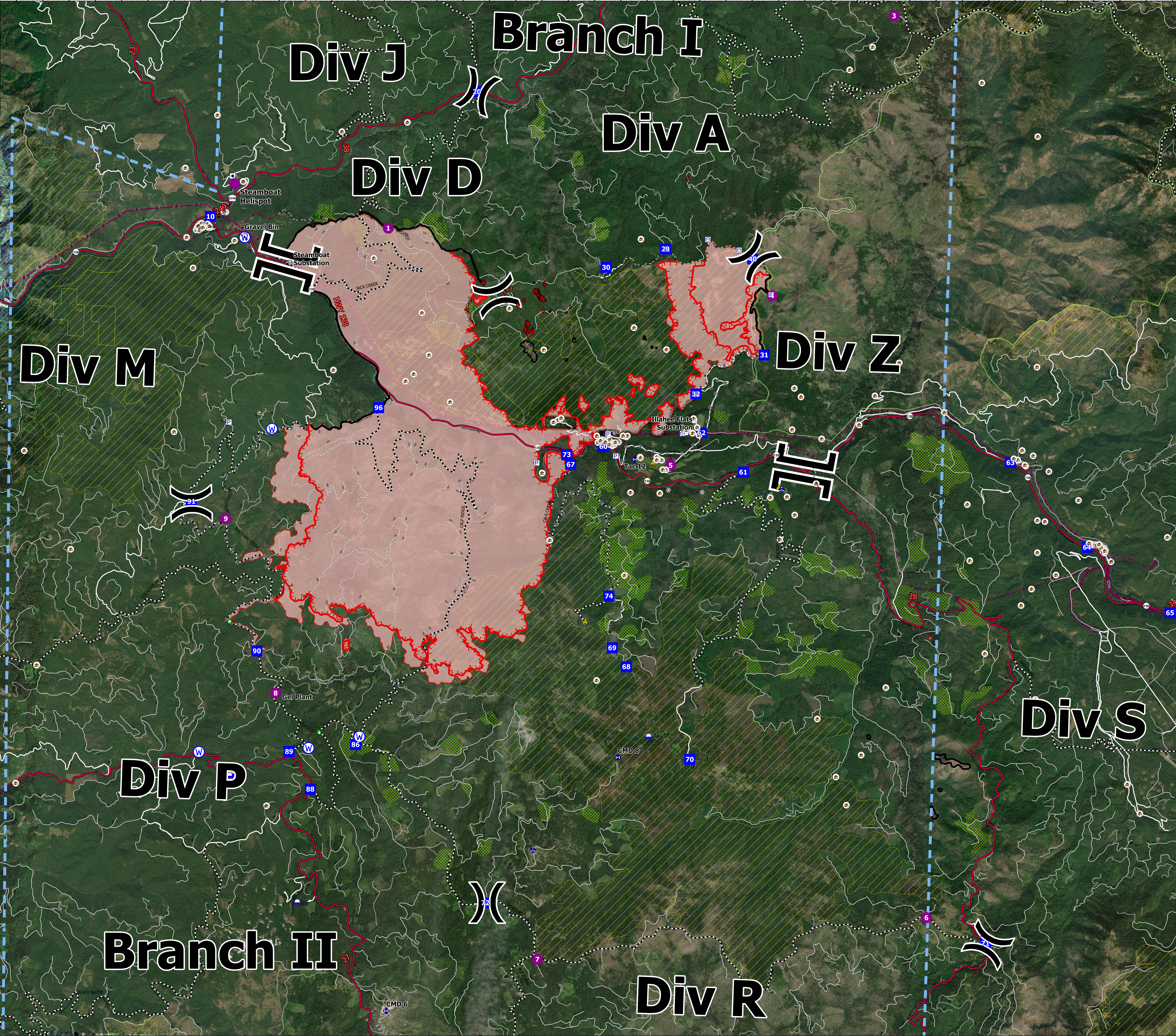
15691 acres at 07/14/2021 2353

- JackFireStructures\_pt
- ATP
- Other Property
- Pump
- Water Tank
- Check Point
- Dip Site
- Mobile Retardant Base
- Helispot
- Sling Site
- Division Break
- Branch Break
- Drop Point
- Value at Risk
- Bridge
- Structure Wrap
- Repair Point
- Choker Push
- Mobile Weather Unit
- Repeater
- Safety Zone
- Water Source
- Completed Dozer Line
- H - Completed Hand Line
- R - Completed Road as Line
- Planned Dozer Line
- H - Planned Hand Line
- H - Planned Road as Line
- Retardant Drop
- Temporary Flight Restriction
- Fire Edge
- Contained Line
- Wildfire Daily Fire Perimeter
- Utility Power Lines
- Roadless Areas Inventoried
- Call Units
- CC\_Alternative\_Final\_Units
- JackFinalUnits
- Area to Protect (ATP)
- Wilderness
- Forest Service Roads
- Paved Road
- Gravel Road
- Dirt Roads
- Unimproved Roads
- Unspecified
- Closed Roads
- Retardant Drop
- Primary Highway
- Secondary Highway
- Paved Road
- Dirt (Not Paved)
- Interstate Not Paved
- US Route Not Paved
- A - Arterial
- C - Collector



IC Mark Type	Label	Latitude WGS84	Longitude WGS84
Branch II	Branch II	43° 20.142' N	122° 42.589' W
Branch I	Branch I	43° 17.489' N	122° 32.738' W
Division Break	Div 1	43° 22.600' N	122° 39.168' W
Drop Point	10	43° 23.745' N	122° 44.171' W
Drop Point	60	43° 17.728' N	122° 36.508' W
Drop Point	30	43° 20.223' N	122° 36.633' W
Drop Point	48	43° 28.492' N	122° 33.807' W
Water Source	Gravel Bin	43° 20.475' N	122° 41.507' W
Helispot	Steamboat Helispot	43° 21.210' N	122° 42.727' W
Value at Risk	Steamboat Substation	43° 20.152' N	122° 42.828' W
Value at Risk	Illahae Flats Substation	43° 17.963' N	122° 34.274' W
Drop Point	62	43° 17.972' N	122° 34.204' W
Helispot	4	43° 19.902' N	122° 33.464' W
Helispot	5	43° 17.907' N	122° 35.968' W
Bridge	10	43° 18.244' N	122° 40.657' W
Drop Point	29	43° 20.500' N	122° 35.500' W
Drop Point	32	43° 18.008' N	122° 34.822' W
Drop Point	63	43° 17.691' N	122° 35.247' W
Drop Point	64	43° 16.553' N	122° 27.317' W
Drop Point	65	43° 15.688' N	122° 25.848' W
Helispot	3	43° 23.838' N	122° 31.292' W
Helispot	1	43° 20.668' N	122° 40.781' W
Safety Zone	31	43° 16.031' N	122° 34.506' W
Safety Zone	31	43° 17.292' N	122° 33.261' W
Drop Point	8	43° 17.219' N	122° 33.147' W
Mobile Weather Unit	CMD 8	43° 13.454' N	122° 36.097' W
Repeater	Div 6	43° 11.001' N	122° 38.067' W
Division Break	Div 6	43° 11.362' N	122° 38.483' W
Division Break	Div 7	43° 16.295' N	122° 44.307' W
Drop Point	96	43° 18.174' N	122° 40.852' W
Repeater	Tac 12	43° 17.572' N	122° 35.949' W
Drop Point	71	43° 11.013' N	122° 29.908' W
Helispot	9	43° 16.513' N	122° 41.683' W
Drop Point	61	43° 17.444' N	122° 31.880' W
Drop Point	61	43° 20.832' N	122° 42.363' W
Division Break	Div D	43° 19.789' N	122° 38.683' W
Drop Point	67	43° 17.493' N	122° 34.627' W
Bridge	6	43° 12.163' N	122° 35.293' W
Helispot	6	43° 14.309' N	122° 42.627' W
Helispot	6	43° 11.346' N	122° 36.114' W
Dip Site	6	43° 13.742' N	122° 35.521' W
Dip Site	5	43° 11.285' N	122° 43.867' W
Dip Site	7	43° 13.007' N	122° 41.446' W
Drop Point	72	43° 10.800' N	122° 37.462' W
Drop Point	72	43° 11.309' N	122° 38.118' W
Drop Point	90	43° 14.742' N	122° 43.010' W
Drop Point	91	43° 16.789' N	122° 44.348' W
Drop Point	68	43° 14.692' N	122° 35.987' W
Drop Point	67	43° 14.744' N	122° 37.142' W
Drop Point	68	43° 14.692' N	122° 36.202' W
Structure Wrap	69	43° 15.140' N	122° 43.545' W
Water Source	69	43° 14.548' N	122° 42.458' W
Water Source	69	43° 13.602' N	122° 41.009' W
Mobile Weather Unit	Check Point 3	43° 12.112' N	122° 37.647' W
Drop Point	89	43° 13.362' N	122° 42.332' W
Drop Point	88	43° 12.894' N	122° 41.340' W
Drop Point	86	43° 11.492' N	122° 41.029' W
Water Source	87	43° 17.839' N	122° 42.862' W
Choker Push	87	43° 16.625' N	122° 41.277' W
Water Source	CMD 6	43° 13.318' N	122° 44.044' W
Repeater	70	43° 09.518' N	122° 43.214' W
Mobile Retardant Base	Gel Plant	43° 14.772' N	122° 42.577' W
Drop Point	70	43° 11.444' N	122° 34.327' W
Drop Point	73	43° 17.609' N	122° 37.249' W
Drop Point	74	43° 13.665' N	122° 36.362' W
Sling Site	74	43° 13.327' N	122° 36.363' W

122°51.5'W 122°50.5'W 122°49.5'W 122°48.5'W 122°47.5'W 122°46.5'W 122°45.5'W 122°44.5'W 122°43.51'W 122°42.5'W 122°41.5'W 122°40.5'W 122°39.5'W 122°38.5'W 122°37.5'W 122°36.5'W 122°35.5'W 122°34.5'W 122°33.5'W 122°32.5'W 122°31.5'W 122°30.5'W 122°29.5'W 122°28.51'W 122°27.5'W 122°26.5'W 122°25.5'W



43°23'N 43°22'N 43°21'N 43°20'N 43°19'N 43°18'N 43°17'N 43°16'N 43°15'N 43°14'N 43°13'N 43°12'N 43°11'N 43°10'N 43°9'N