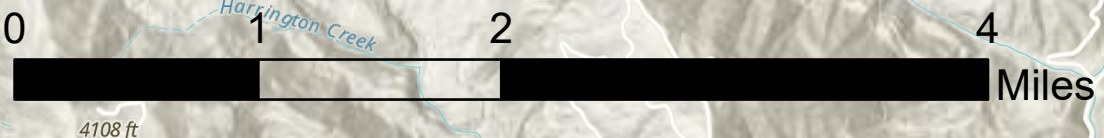


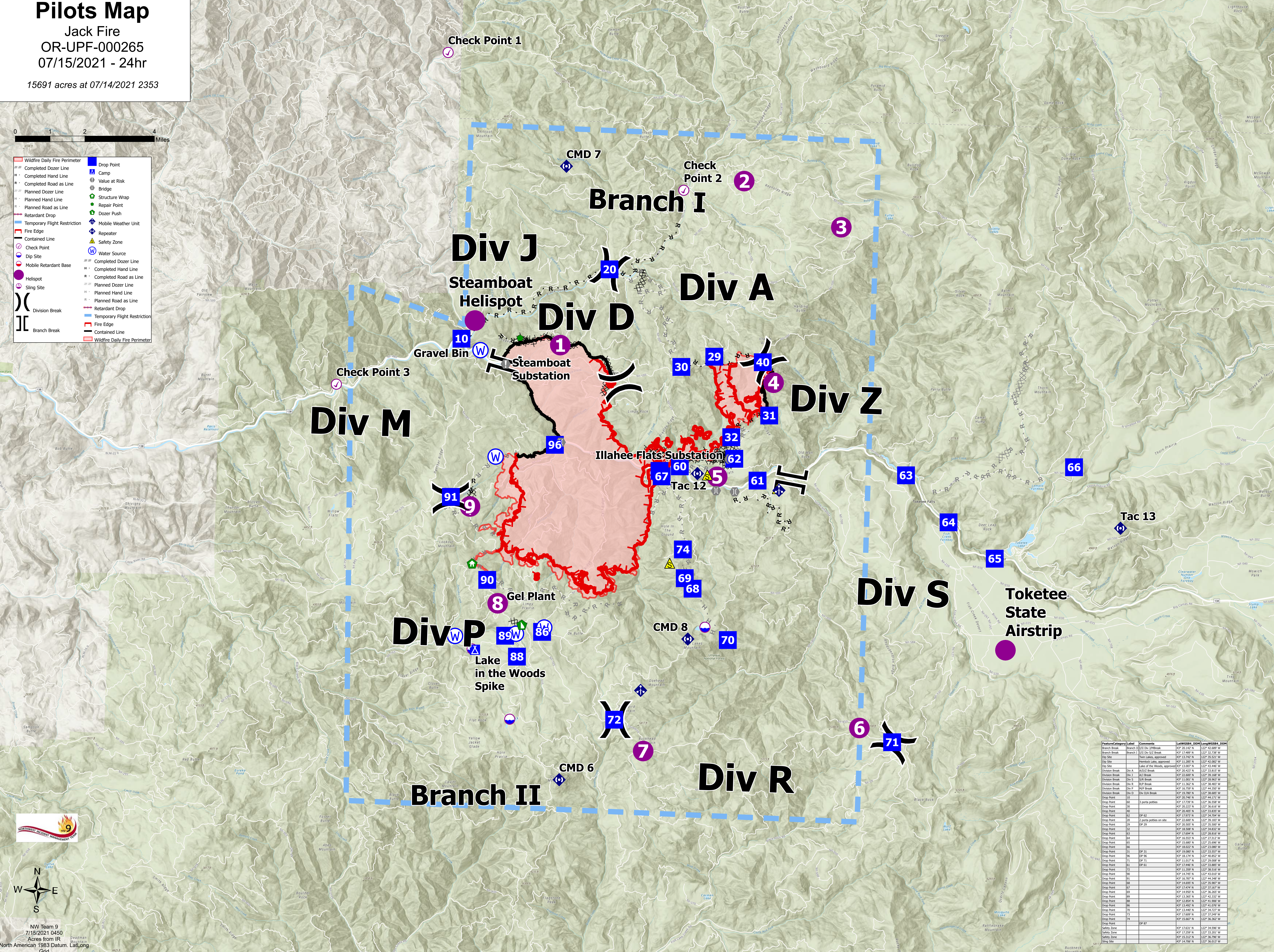
Pilots Map

Jack Fire
OR-UPF-000265
07/15/2021 - 24hr

15691 acres at 07/14/2021 2353



- Wildfire Daily Fire Perimeter
- Completed Dozer Line
- Completed Hand Line
- Completed Road as Line
- Planned Dozer Line
- Planned Hand Line
- Planned Road as Line
- Retardant Drop
- Temporary Flight Restriction
- Fire Edge
- Contained Line
- Check Point
- Dip Site
- Hellspot
- Sling Site
- Division Break
- Branch Break
- Drop Point
- Camp
- Value at Risk
- Bridge
- Structure Wrap
- Repair Point
- Dozer Push
- Mobile Weather Unit
- Repeater
- Safety Zone
- Water Source
- Completed Dozer Line
- Completed Hand Line
- Completed Road as Line
- Planned Dozer Line
- Planned Hand Line
- Planned Road as Line
- Retardant Drop
- Temporary Flight Restriction
- Fire Edge
- Contained Line
- Wildfire Daily Fire Perimeter



Feature	Category	Label	Comments	Lat	Long	DDH	Long	WGS84	DDM
Branch Break	Branch	101	Div 1 Break	43° 26.142' N	122° 42.989' W				
Branch Break	Branch	102	Div 2 Break	43° 12.687' N	122° 32.239' W				
Dip Site	Dip	1	Twin Lakes, approved	43° 13.742' N	122° 35.521' W				
Dip Site	Dip	2	Washburn Lake, approved	43° 13.083' N	122° 43.852' W				
Dip Site	Dip	3	Lake of the Woods, approved	43° 13.007' N	122° 43.446' W				
Division Break	Div	A	ASDZ Break	43° 26.423' N	122° 33.813' W				
Division Break	Div	B	ASDZ Break	43° 22.000' N	122° 31.823' W				
Division Break	Div	S	SR Break	43° 11.011' N	122° 38.963' W				
Division Break	Div	W	SR Break	43° 11.582' N	122° 38.463' W				
Division Break	Div	P	SR Break	43° 16.799' N	122° 44.290' W				
Division Break	Div	D	SR Break	43° 19.787' N	122° 38.695' W				
Drop Point	DP	1	3 ports bottles	43° 26.780' N	122° 44.171' W				
Drop Point	DP	2	3 ports bottles	43° 17.739' N	122° 36.598' W				
Drop Point	DP	3	3 ports bottles	43° 26.223' N	122° 38.630' W				
Drop Point	DP	4	3 ports bottles on site	43° 26.905' N	122° 38.820' W				
Drop Point	DP	5	3 ports bottles on site	43° 17.923' N	122° 34.704' W				
Drop Point	DP	6	3 ports bottles on site	43° 23.088' N	122° 39.232' W				
Drop Point	DP	7	3 ports bottles on site	43° 26.585' N	122° 35.500' W				
Drop Point	DP	8	3 ports bottles on site	43° 18.508' N	122° 34.832' W				
Drop Point	DP	9	3 ports bottles on site	43° 12.687' N	122° 38.832' W				
Drop Point	DP	10	3 ports bottles on site	43° 16.533' N	122° 37.312' W				
Drop Point	DP	11	3 ports bottles on site	43° 15.087' N	122° 35.500' W				
Drop Point	DP	12	3 ports bottles on site	43° 18.022' N	122° 23.080' W				
Drop Point	DP	13	3 ports bottles on site	43° 19.087' N	122° 33.557' W				
Drop Point	DP	14	3 ports bottles on site	43° 18.119' N	122° 40.822' W				
Drop Point	DP	15	3 ports bottles on site	43° 11.017' N	122° 39.008' W				
Drop Point	DP	16	3 ports bottles on site	43° 17.440' N	122° 33.860' W				
Drop Point	DP	17	3 ports bottles on site	43° 11.399' N	122° 38.550' W				
Drop Point	DP	18	3 ports bottles on site	43° 14.745' N	122° 43.037' W				
Drop Point	DP	19	3 ports bottles on site	43° 16.787' N	122° 44.290' W				
Drop Point	DP	20	3 ports bottles on site	43° 14.695' N	122° 35.867' W				
Drop Point	DP	21	3 ports bottles on site	43° 12.687' N	122° 37.312' W				
Drop Point	DP	22	3 ports bottles on site	43° 14.999' N	122° 36.290' W				
Drop Point	DP	23	3 ports bottles on site	43° 13.365' N	122° 43.337' W				
Drop Point	DP	24	3 ports bottles on site	43° 13.854' N	122° 43.960' W				
Drop Point	DP	25	3 ports bottles on site	43° 13.462' N	122° 41.076' W				
Drop Point	DP	26	3 ports bottles on site	43° 13.440' N	122° 34.727' W				
Drop Point	DP	27	3 ports bottles on site	43° 12.687' N	122° 37.312' W				
Drop Point	DP	28	3 ports bottles on site	43° 15.667' N	122° 36.362' W				
Drop Point	DP	29	3 ports bottles on site	43° 17.431' N	122° 34.590' W				
Drop Point	DP	30	3 ports bottles on site	43° 17.239' N	122° 33.261' W				
Drop Point	DP	31	3 ports bottles on site	43° 15.322' N	122° 36.290' W				
Drop Point	DP	32	3 ports bottles on site	43° 14.706' N	122° 36.613' W				

NW Team 9
7/15/2021 0450
Acres from IR
North American 1983 Datum, Lat/Long
Grid