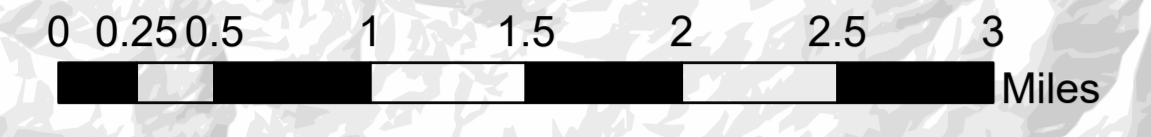


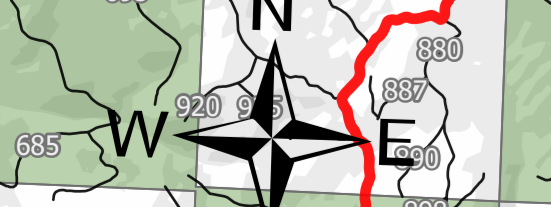
Briefing Map

Jack Fire
OR-UPF-000265
07/17/2021 - 24hr

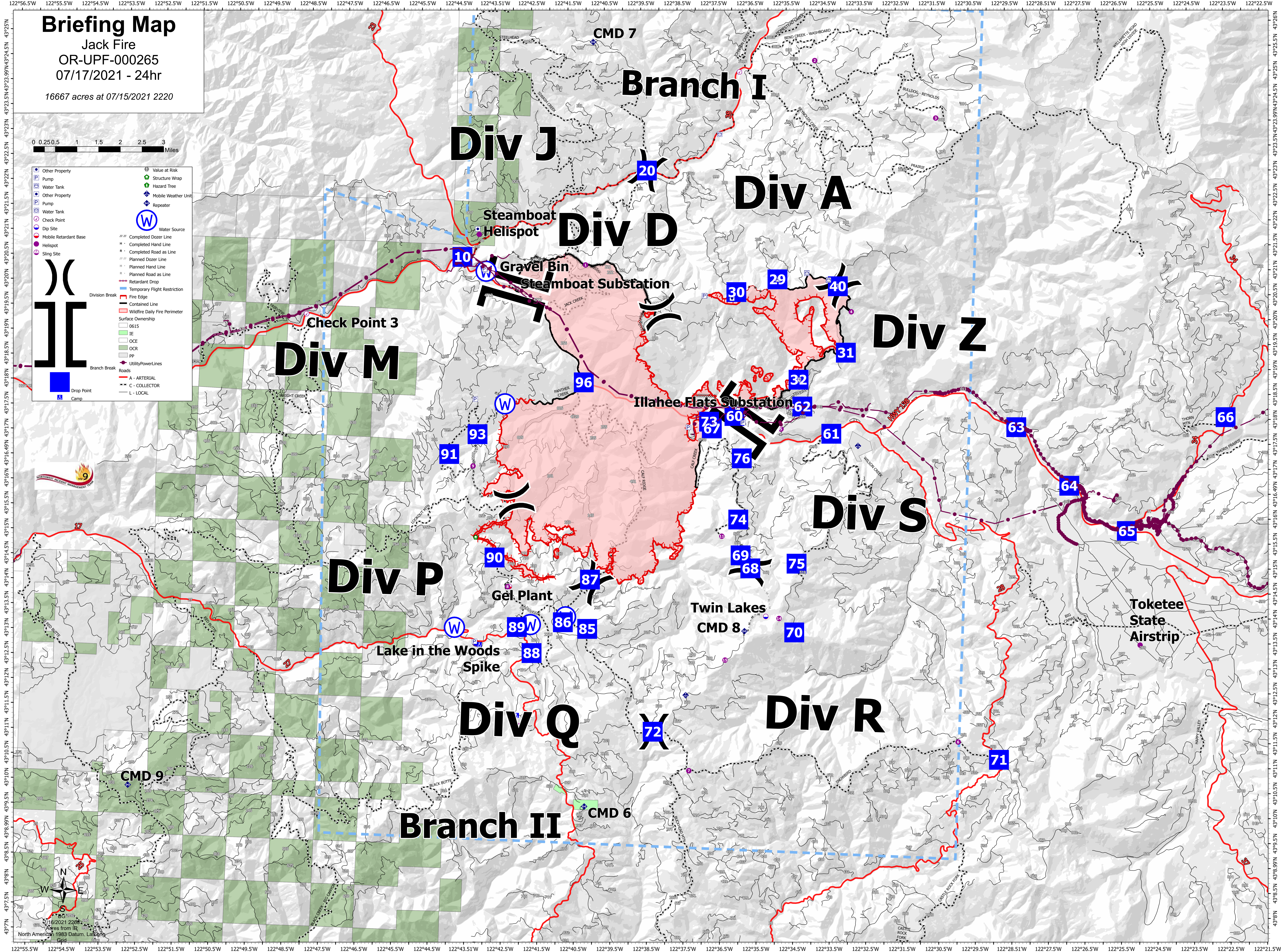
16667 acres at 07/15/2021 2220



	Other Property		Value at Risk
	Pump		Structure Wrap
	Water Tank		Hazard Tree
	Other Property		Mobile Weather Unit
	Pump		Repeater
	Water Tank		Water Source
	Check Point		
	Dip Site		
	Mobile Retardant Base		
	Helispot		
	Slingsite		
	Completed Dozer Line		
	Completed Hand Line		
	Planned Dozer Line		
	Planned Hand Line		
	Planned Road as Line		
	Retardant Drop		
	Temporary Flight Restriction		
	Fire Edge		
	Contained Line		
	Wildfire Daily Fire Perimeter		
	Surface Ownership		
	0615		
	IE		
	OCE		
	OCR		
	PP		
	Utility Power Lines		
	Roads		
	A - ARTERIAL		
	C - COLLECTOR		
	L - LOCAL		
	Division Break		
	Fire Edge		
	Contained Line		
	Wildfire Daily Fire Perimeter		
	Surface Ownership		
	0615		
	IE		
	OCE		
	OCR		
	PP		
	Utility Power Lines		
	Roads		
	A - ARTERIAL		
	C - COLLECTOR		
	L - LOCAL		
	Drop Point		
	Camp		



North American 1983 Datum, Lantana
Acres from IR
07/16/2021 2220



122°55.5'W 122°54.5'W 122°53.5'W 122°52.5'W 122°51.5'W 122°50.5'W 122°49.5'W 122°48.5'W 122°47.5'W 122°46.5'W 122°45.5'W 122°44.5'W 122°43.51'W 122°42.5'W 122°41.5'W 122°40.5'W 122°39.5'W 122°38.5'W 122°37.5'W 122°36.5'W 122°35.5'W 122°34.5'W 122°33.5'W 122°32.5'W 122°31.5'W 122°30.5'W 122°29.5'W 122°28.5'W 122°27.5'W 122°26.5'W 122°25.5'W 122°24.5'W 122°23.5'W 122°22.5'W 122°21.5'W 122°20.5'W 122°19.5'W 122°18.5'W 122°17.5'W 122°16.5'W 122°15.5'W 122°14.5'W 122°13.5'W 122°12.5'W 122°11.5'W 122°10.5'W 122°9.5'W 122°8.5'W 122°7.5'W 122°6.5'W 122°5.5'W 122°4.5'W 122°3.5'W 122°2.5'W 122°1.5'W 122°0.5'W 122°0'W 122°0.5'W 122°1.5'W 122°2.5'W 122°3.5'W 122°4.5'W 122°5.5'W 122°6.5'W 122°7.5'W 122°8.5'W 122°9.5'W 122°10.5'W 122°11.5'W 122°12.5'W 122°13.5'W 122°14.5'W 122°15.5'W 122°16.5'W 122°17.5'W 122°18.5'W 122°19.5'W 122°20.5'W 122°21.5'W 122°22.5'W 122°23.5'W 122°24.5'W 122°25.5'W 122°26.5'W 122°27.5'W 122°28.5'W 122°29.5'W 122°30.5'W 122°31.5'W 122°32.5'W 122°33.5'W 122°34.5'W 122°35.5'W 122°36.5'W 122°37.5'W 122°38.5'W 122°39.5'W 122°40.5'W 122°41.5'W 122°42.5'W 122°43.51'W 122°44.5'W 122°45.5'W 122°46.5'W 122°47.5'W 122°48.5'W 122°49.5'W 122°50.5'W 122°51.5'W 122°52.5'W 122°53.5'W 122°54.5'W 122°55.5'W