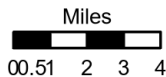


Dutch Creek Map



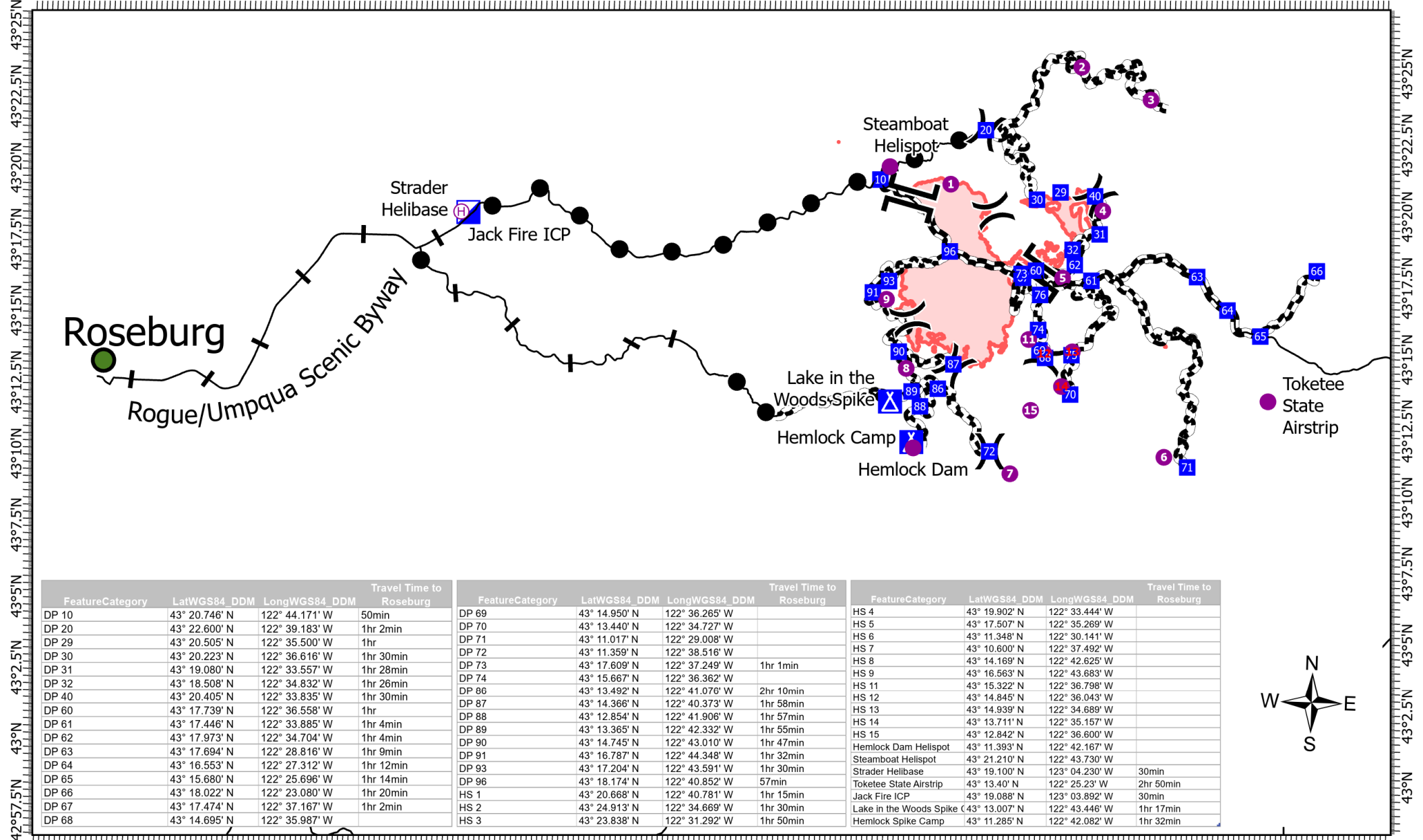
BG
7/16/2021 1725
North American 1983 Datum.



07/17/2021 - 24hr

- City
- Helispot
- H Helibase
- Scenic_Byway
- Division Break
- Branch Break
- ▀ Incident Command Post
- Drop Point
- ⚓ Camp
- <40 min
- <60 min
- - - >60 min
- Wildfire Daily Fire Perimeter

123°25'W 123°20'W 123°15'W 123°10'W 123°5'W 123°W 122°55'W 122°50'W 122°45'W 122°40'W 122°35'W 122°30'W 122°25'W 122°20'W



FeatureCategory	LatWGS84_DDM	LongWGS84_DDM	Travel Time to Roseburg
DP 10	43° 20.746' N	122° 44.171' W	50min
DP 20	43° 22.600' N	122° 39.183' W	1hr 2min
DP 29	43° 20.505' N	122° 35.500' W	1hr
DP 30	43° 20.223' N	122° 36.616' W	1hr 30min
DP 31	43° 19.080' N	122° 33.557' W	1hr 28min
DP 32	43° 18.508' N	122° 34.832' W	1hr 26min
DP 40	43° 20.405' N	122° 33.835' W	1hr 30min
DP 60	43° 17.739' N	122° 36.558' W	1hr
DP 61	43° 17.446' N	122° 33.885' W	1hr 4min
DP 62	43° 17.973' N	122° 34.704' W	1hr 4min
DP 63	43° 17.694' N	122° 28.816' W	1hr 9min
DP 64	43° 16.553' N	122° 27.312' W	1hr 12min
DP 65	43° 15.680' N	122° 25.696' W	1hr 14min
DP 66	43° 18.022' N	122° 23.080' W	1hr 20min
DP 67	43° 17.474' N	122° 37.167' W	1hr 2min
DP 68	43° 14.695' N	122° 35.987' W	

FeatureCategory	LatWGS84_DDM	LongWGS84_DDM	Travel Time to Roseburg
DP 69	43° 14.950' N	122° 36.265' W	
DP 70	43° 13.440' N	122° 34.727' W	
DP 71	43° 11.017' N	122° 29.008' W	
DP 72	43° 11.359' N	122° 38.516' W	
DP 73	43° 17.609' N	122° 37.249' W	1hr 1min
DP 74	43° 15.667' N	122° 36.362' W	
DP 86	43° 13.492' N	122° 41.076' W	2hr 10min
DP 87	43° 14.366' N	122° 40.373' W	1hr 58min
DP 88	43° 12.854' N	122° 41.906' W	1hr 57min
DP 89	43° 13.365' N	122° 42.332' W	1hr 55min
DP 90	43° 14.745' N	122° 43.010' W	1hr 47min
DP 91	43° 16.787' N	122° 44.348' W	1hr 32min
DP 93	43° 17.204' N	122° 43.591' W	1hr 30min
DP 96	43° 18.174' N	122° 40.852' W	57min
HS 1	43° 20.668' N	122° 40.781' W	1hr 15min
HS 2	43° 24.913' N	122° 34.669' W	1hr 30min
HS 3	43° 23.838' N	122° 31.292' W	1hr 50min

FeatureCategory	LatWGS84_DDM	LongWGS84_DDM	Travel Time to Roseburg
HS 4	43° 19.902' N	122° 33.444' W	
HS 5	43° 17.507' N	122° 35.269' W	
HS 6	43° 11.348' N	122° 30.141' W	
HS 7	43° 10.600' N	122° 37.492' W	
HS 8	43° 14.169' N	122° 42.625' W	
HS 9	43° 16.563' N	122° 43.683' W	
HS 11	43° 15.322' N	122° 36.798' W	
HS 12	43° 14.845' N	122° 36.043' W	
HS 13	43° 14.939' N	122° 34.689' W	
HS 14	43° 13.711' N	122° 35.157' W	
HS 15	43° 12.842' N	122° 36.600' W	
Hemlock Dam Helispot	43° 11.393' N	122° 42.167' W	
Steamboat Helispot	43° 21.210' N	122° 43.730' W	
Strader Helibase	43° 19.100' N	123° 04.230' W	30min
Toketee Slate Airstrip	43° 13.40' N	122° 25.23' W	2hr 50min
Jack Fire ICP	43° 19.088' N	123° 03.892' W	30min
Lake in the Woods Spike	43° 13.007' N	122° 43.446' W	1hr 17min
Hemlock Spike Camp	43° 11.285' N	122° 42.082' W	1hr 32min



123°22.5'W 123°17.5'W 123°12.5'W 123°7.5'W 123°2.5'W 122°57.5'W 122°52.5'W 122°47.5'W 122°42.5'W 122°37.5'W 122°32.5'W 122°27.5'W 122°22.5'W