

Operations Map

Branch II

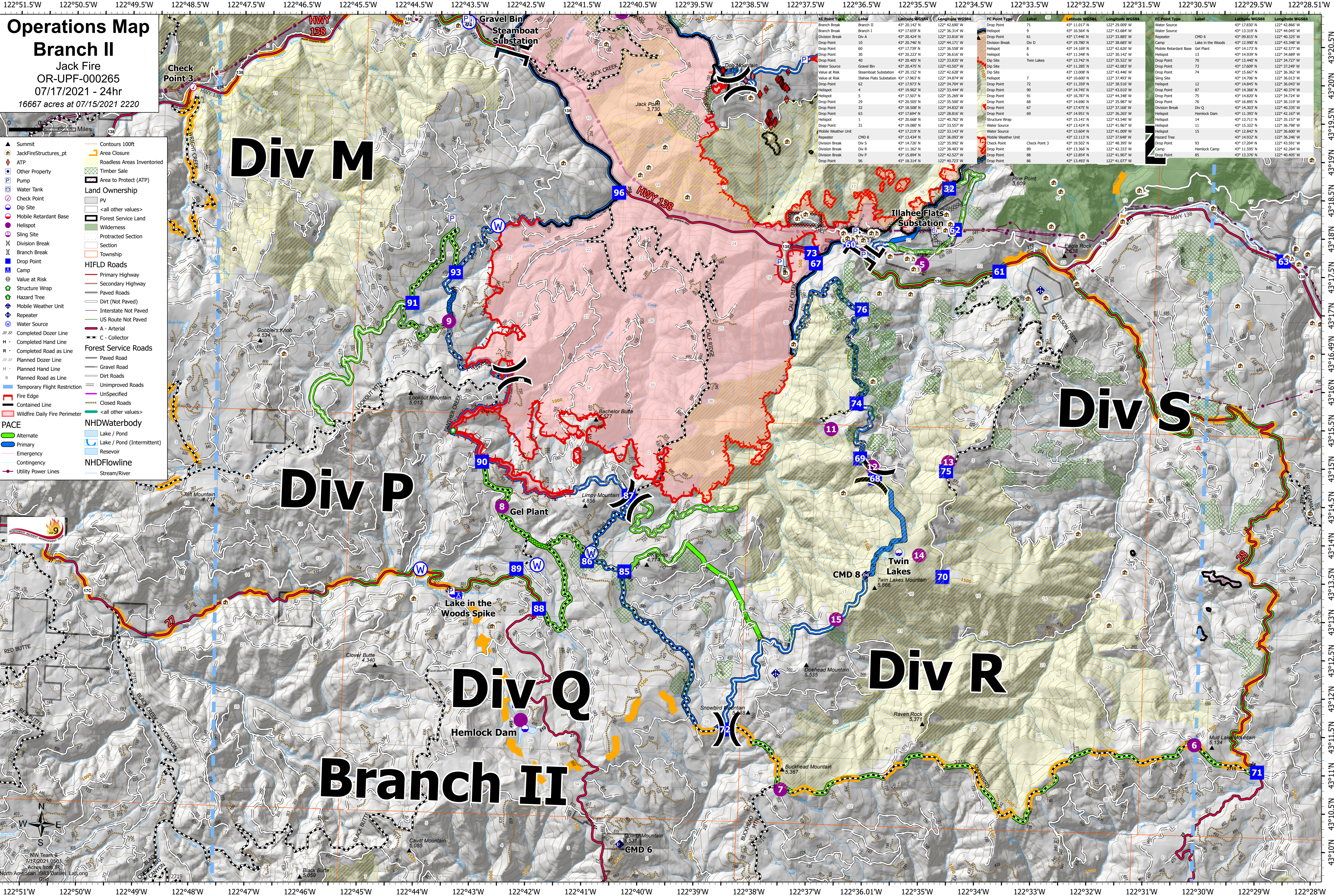
Jack Fire
OR-UPF-000265
07/17/2021 - 24hr
16667 acres at 07/15/2021 2220

- Summit
 - JackFireStructures_pt
 - ATP
 - Other Property
 - Pump
 - Water Tank
 - Check Point
 - Dip Site
 - Mobile Retardant Base
 - Helispot
 - Sling Site
 - Division Break
 - Branch Break
 - Drop Point
 - Camp
 - Value at Risk
 - Structure Wrap
 - Hazard Tree
 - Mobile Weather Unit
 - Repeater
 - Water Source
 - Completed Dozer Line
 - Completed Hand Line
 - Completed Road as Line
 - Planned Dozer Line
 - Planned Hand Line
 - Planned Road as Line
 - Temporary Flight Restriction
 - Fire Edge
 - Contained Line
 - Wildfire Daily Fire Perimeter
- Contours 100ft
 - Area Closure
 - Roadless Areas Inventoried
 - Timber Sale
 - Area to Protect (ATP)
 - Land Ownership
 - PV
 - <all other values>
 - Forest Service Land
 - Wilderness
 - Protracted Section
 - Section
 - Township
 - HIFLHD Roads
 - Primary Highway
 - Secondary Highway
 - Paved Roads
 - Dirt (Not Paved)
 - Interstate Not Paved
 - US Route Not Paved
 - A - Arterial
 - C - Collector
 - Forest Service Roads
 - Paved Road
 - Gravel Road
 - Dirt Roads
 - Unimproved Roads
 - Unspecified
 - Closed Roads
 - <all other values>
 - NHDWaterbody
 - Lake / Pond
 - Lake / Pond (Intermittent)
 - Reservoir
 - NHDFlowline
 - Stream/River

0 1 2 Miles

North American 1983 Datum, Laloong Grid

NW Team
7/17/2021 09:21



FC Point Type	Label	Latitude WGS84	Longitude WGS84	FC Point Type	Label	Latitude WGS84	Longitude WGS84
Branch Break	Branch II	43° 20.142' N	122° 42.690' W	Drop Point	71	43° 11.017' N	122° 29.009' W
Branch Break	Branch I	43° 17.659' N	122° 36.314' W	Drop Point	9	43° 16.564' N	122° 43.604' W
Division Break	Div A	43° 20.424' N	122° 33.816' W	Drop Point	61	43° 17.446' N	122° 33.885' W
Drop Point	10	43° 20.745' N	122° 44.271' W	Division Break	Div D	43° 19.280' N	122° 32.948' W
Drop Point	30	43° 17.239' N	122° 36.558' W	Drop Point	8	43° 14.169' N	122° 42.626' W
Drop Point	60	43° 20.223' N	122° 36.616' W	Helispot	6	43° 11.348' N	122° 30.142' W
Drop Point	40	43° 20.405' N	122° 33.835' W	Dip Site	Twin Lakes	43° 13.742' N	122° 35.522' W
Water Source	Gravel Bin	43° 20.142' N	122° 42.690' W	Dip Site		43° 11.285' N	122° 42.083' W
Value at Risk	Steamboat Substation	43° 20.152' N	122° 42.628' W	Drop Point	7	43° 13.008' N	122° 43.446' W
Value at Risk	Illahee Flats Substation	43° 17.663' N	122° 34.714' W	Drop Point	72	43° 19.800' N	122° 37.652' W
Drop Point	62	43° 17.973' N	122° 34.704' W	Drop Point	7	43° 11.359' N	122° 38.516' W
Helispot	4	43° 19.902' N	122° 33.444' W	Drop Point	90	43° 14.745' N	122° 43.010' W
Helispot	5	43° 17.507' N	122° 35.269' W	Drop Point	91	43° 16.787' N	122° 44.348' W
Drop Point	29	43° 20.505' N	122° 35.500' W	Drop Point	67	43° 14.696' N	122° 35.967' W
Drop Point	32	43° 18.508' N	122° 34.820' W	Drop Point	67	43° 17.475' N	122° 37.168' W
Drop Point	63	43° 17.664' N	122° 38.616' W	Drop Point	69	43° 14.561' N	122° 36.865' W
Helispot	1	43° 20.668' N	122° 40.782' W	Structure Wrap		43° 15.141' N	122° 43.546' W
Drop Point	31	43° 19.080' N	122° 33.557' W	Water Source		43° 13.424' N	122° 41.967' W
Mobile Weather Unit		43° 17.219' N	122° 33.143' W	Water Source		43° 13.604' N	122° 41.009' W
Repeater	CMD 8	43° 13.434' N	122° 36.093' W	Mobile Weather Unit		43° 12.113' N	122° 37.648' W
Division Break	Div S	43° 14.726' N	122° 35.950' W	Check Point	Check Point 3	43° 19.502' N	122° 46.395' W
Division Break	Div R	43° 11.362' N	122° 38.462' W	Drop Point	89	43° 13.362' N	122° 43.323' W
Division Break	Div P	43° 15.894' N	122° 42.527' W	Drop Point	88	43° 15.894' N	122° 41.907' W
Drop Point	96	43° 18.314' N	122° 40.723' W	Drop Point	86	43° 13.493' N	122° 41.077' W

Div M

Div P

Div Q

Div R

Div S

Branch II