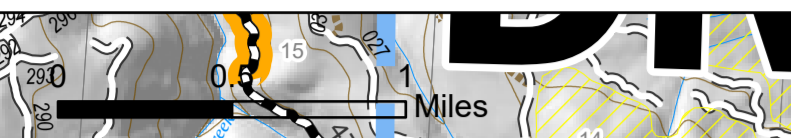


Operations Map Div R/S/Q

Jack Fire
OR-UPF-000265
07/17/2021 - 24hr
16667 acres at 07/15/2021 2220

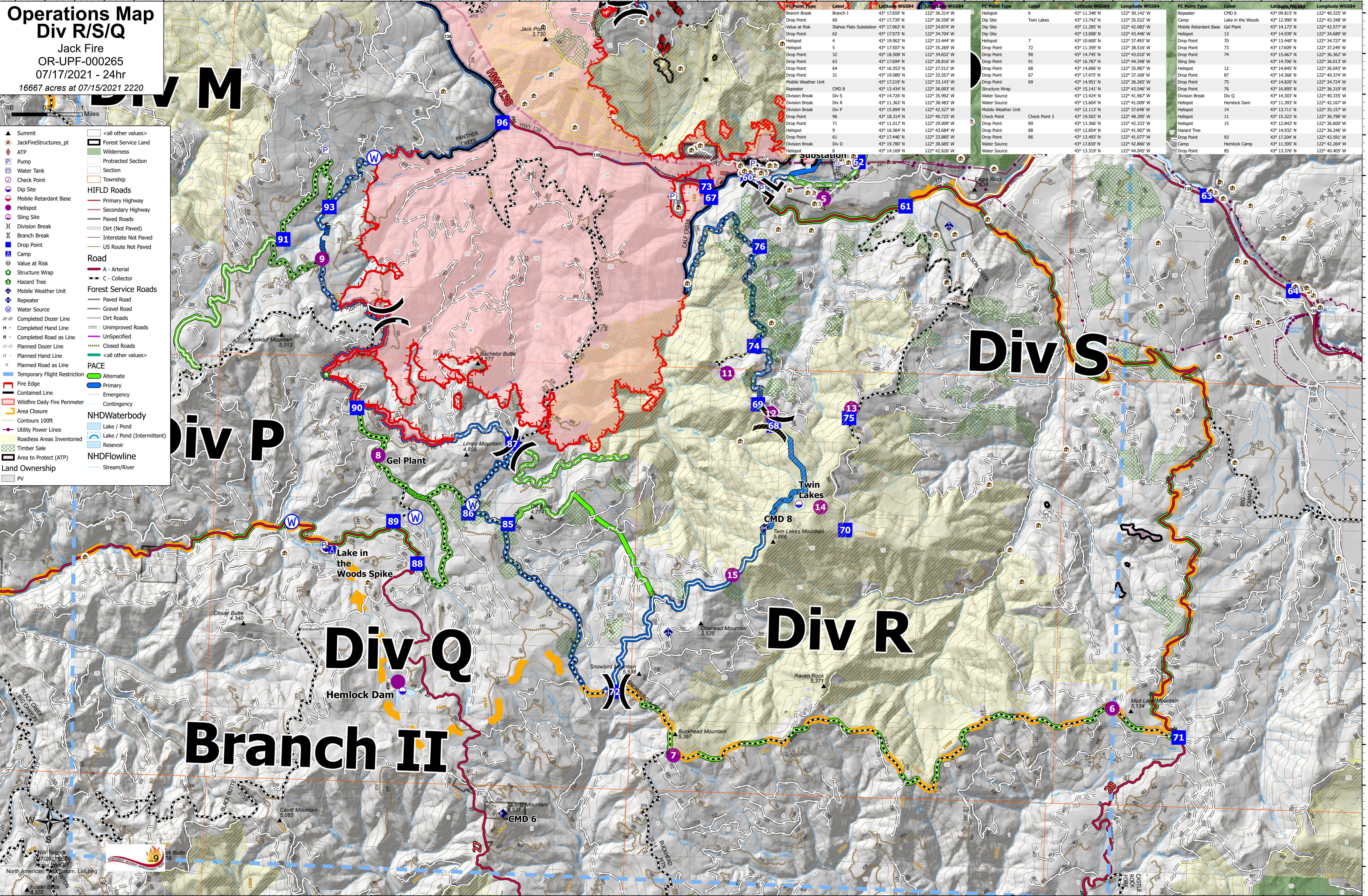


- Summit
- JackFireStructures_pt
- ATP
- Pump
- Water Tank
- Check Point
- Dip Site
- Mobile Retardant Base
- Helispot
- Sling Site
- Division Break
- Branch Break
- Drop Point
- Camp
- Value at Risk
- Structure Wrap
- Hazard Tree
- Mobile Weather Unit
- Repeater
- Water Source
- Completed Dozer Line
- Completed Hand Line
- Completed Road as Line
- Planned Dozer Line
- Planned Hand Line
- Planned Road as Line
- Temporary Flight Restriction
- Fire Edge
- Contained Line
- Wildfire Daily Fire Perimeter
- Area Closure
- Contours 100ft
- Utility Power Lines
- Roadless Areas Inventoried
- Timber Sale
- Area to Protect (ATP)
- Land Ownership
- Forest Service Land
- Wilderness
- Protracted Section
- Section
- Township
- HIFLD Roads
- Primary Highway
- Secondary Highway
- Paved Roads
- Dirt (Not Paved)
- Interstate Not Paved
- US Route Not Paved
- Road
- A - Arterial
- C - Collector
- Forest Service Roads
- Paved Road
- Gravel Road
- Dirt Roads
- Unimproved Roads
- Unspecified
- Closed Roads
- Alternate
- Primary
- Emergency
- Contingency
- NHDWaterbody
- Lake / Pond
- Lake / Pond (Intermittent)
- Reservoir
- NHDFlowline
- Stream/River

FC Point Type	Label	Latitude WGS84	Longitude WGS84
Branch Break	Branch I	43° 17.659' N	122° 36.314' W
Drop Point	60	43° 17.739' N	122° 36.558' W
Value at Risk	Ilihee Flats Substation	43° 17.963' N	122° 34.874' W
Drop Point	62	43° 17.973' N	122° 34.704' W
Helispot	4	43° 19.902' N	122° 33.444' W
Helispot	5	43° 17.507' N	122° 35.269' W
Drop Point	32	43° 18.508' N	122° 34.832' W
Drop Point	63	43° 17.694' N	122° 28.816' W
Drop Point	64	43° 16.553' N	122° 27.312' W
Drop Point	31	43° 19.900' N	122° 33.557' W
Mobile Weather Unit	Mobile Weather Unit	43° 17.219' N	122° 33.143' W
Repeater	CMD 8	43° 13.434' N	122° 36.093' W
Division Break	Div S	43° 14.726' N	122° 35.992' W
Division Break	Div R	43° 11.362' N	122° 38.483' W
Division Break	Div P	43° 15.894' N	122° 42.527' W
Drop Point	96	43° 18.314' N	122° 40.723' W
Drop Point	71	43° 11.017' N	122° 29.009' W
Drop Point	9	43° 16.564' N	122° 43.684' W
Drop Point	61	43° 17.446' N	122° 33.885' W
Division Break	Div D	43° 19.780' N	122° 38.685' W
Helispot	8	43° 14.169' N	122° 42.626' W

FC Point Type	Label	Latitude WGS84	Longitude WGS84
Helispot	6	43° 11.348' N	122° 30.142' W
Dip Site	Twin Lakes	43° 13.742' N	122° 35.522' W
Dip Site	7	43° 11.285' N	122° 42.083' W
Dip Site	13	43° 13.008' N	122° 43.446' W
Helispot	7	43° 14.600' N	122° 37.493' W
Drop Point	72	43° 11.359' N	122° 38.516' W
Drop Point	90	43° 14.745' N	122° 43.010' W
Drop Point	91	43° 16.787' N	122° 44.348' W
Drop Point	68	43° 14.696' N	122° 35.987' W
Drop Point	67	43° 17.475' N	122° 32.168' W
Drop Point	69	43° 14.961' N	122° 36.265' W
Structure Wrap	Structure Wrap	43° 15.141' N	122° 43.546' W
Water Source	Water Source	43° 14.424' N	122° 41.967' W
Water Source	Water Source	43° 11.604' N	122° 41.009' W
Mobile Weather Unit	Mobile Weather Unit	43° 12.113' N	122° 37.648' W
Check Point	Check Point 3	43° 11.362' N	122° 48.395' W
Drop Point	89	43° 13.366' N	122° 42.333' W
Drop Point	88	43° 12.854' N	122° 41.907' W
Drop Point	86	43° 13.493' N	122° 41.077' W
Water Source	Water Source	43° 17.830' N	122° 42.866' W
Water Source	Water Source	43° 13.319' N	122° 44.045' W

FC Point Type	Label	Latitude WGS84	Longitude WGS84
Repeater	CMD 6	43° 09.815' N	122° 40.325' W
Camp	Lake in the Woods	43° 12.990' N	122° 43.348' W
Mobile Retardant Base	Gel Plant	43° 14.173' N	122° 42.577' W
Helispot	13	43° 14.939' N	122° 34.689' W
Drop Point	70	43° 13.440' N	122° 34.727' W
Drop Point	73	43° 17.609' N	122° 37.249' W
Drop Point	74	43° 15.667' N	122° 36.362' W
Sling Site	Sling Site	43° 14.706' N	122° 36.013' W
Helispot	12	43° 14.845' N	122° 36.043' W
Drop Point	87	43° 14.368' N	122° 40.274' W
Drop Point	75	43° 14.830' N	122° 34.724' W
Drop Point	76	43° 16.895' N	122° 36.319' W
Division Break	Div Q	43° 14.303' N	122° 40.335' W
Helispot	Helispot	43° 11.393' N	122° 42.167' W
Helispot	14	43° 13.711' N	122° 35.157' W
Helispot	11	43° 15.322' N	122° 36.798' W
Helispot	15	43° 12.842' N	122° 36.600' W
Hazard Tree	Hazard Tree	43° 14.932' N	122° 36.246' W
Drop Point	93	43° 17.204' N	122° 43.591' W
Camp	Hellock Camp	43° 11.595' N	122° 42.264' W
Drop Point	85	43° 13.376' N	122° 40.405' W



North American 1983 Datum, Lat, Long