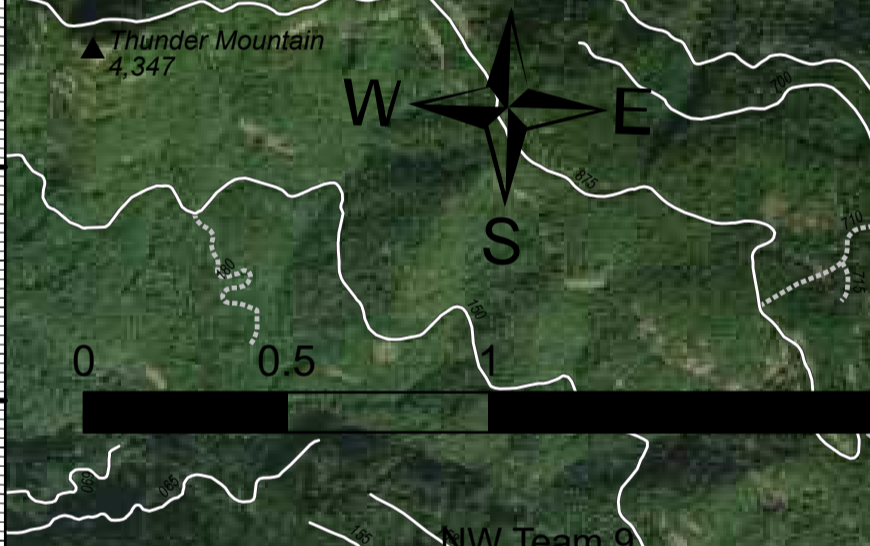


Operations Map

Jack Fire
OR-UPF-000265
07/17/2021 - 24hr

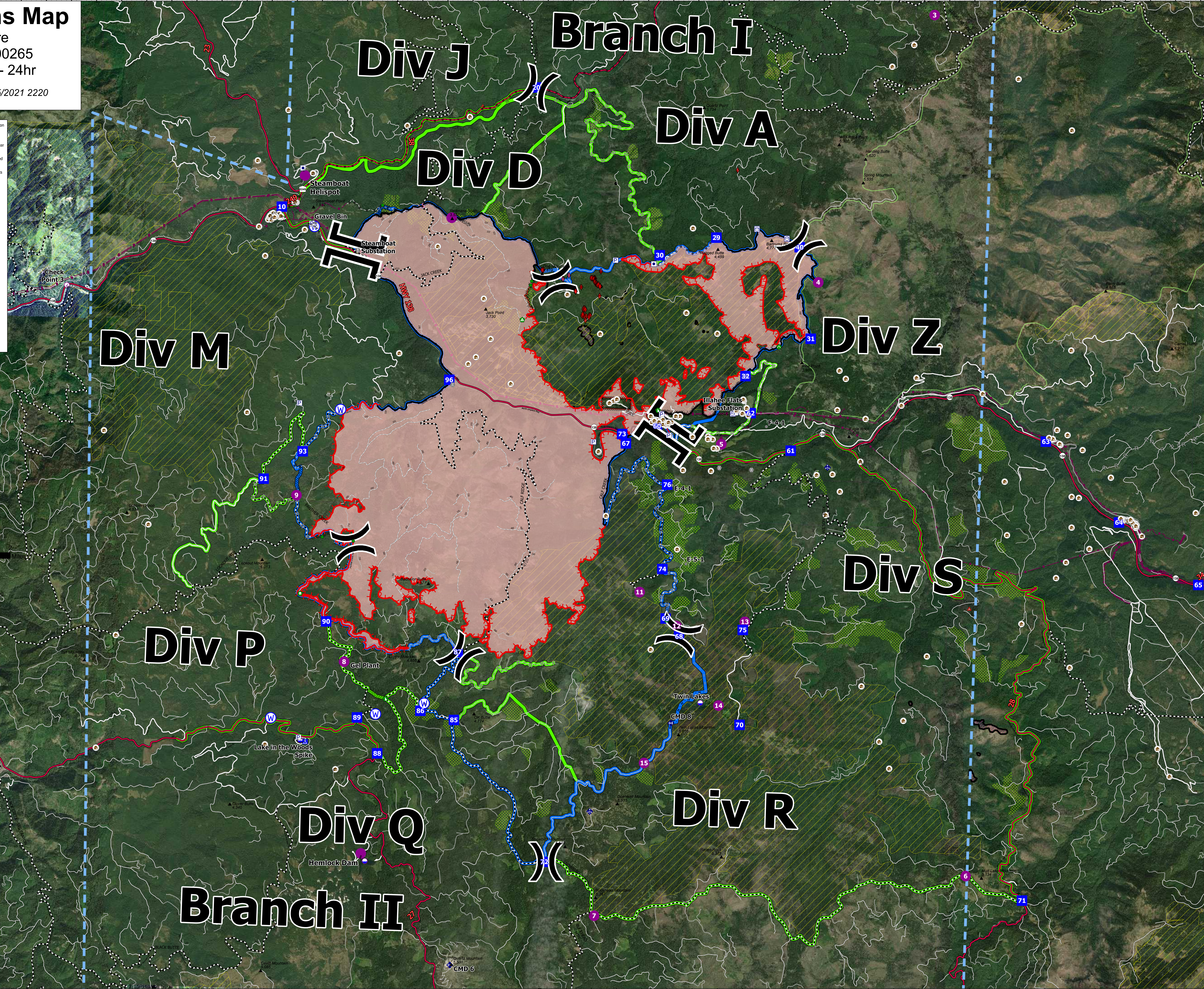
16667 acres at 07/15/2021 2220

- Summit
- JackFireStructures_pt
- ATP
- Other Property
- Pump
- Water Tank
- Check Point
- Dip Site
- Mobile Retardant Base
- Helibase
- Sling Site
- Division Break
- Branch Break
- Drop Point
- Camp
- Value at Risk
- Other
- Bridge
- Structure Wrap
- Repair Point
- Landing or Log Deck
- Hazard Tree
- Dozer Push
- Culvert
- Mobile Weather Unit
- Repeater
- Water Source
- Completed Dozer Line
- Completed Hand Line
- Completed Road as Line
- Planned Dozer Line
- Planned Hand Line
- Planned Road as Line
- Retardant Drop
- Temporary Flight Restriction
- Fire Edge
- Contained Line
- Wildfire Daily Fire Perimeter
- Utility Power Lines
- Roadless Areas Inventoried
- Call Units
- CC_Alternative_Final_Units
- Dry Units
- JackFinalUnits
- Area to Protect (ATP)
- Wilderness
- Forest Service Roads
- Paved Road
- Gravel Road
- Dirt Roads
- Unimproved Roads
- Unspecified
- Closed Roads
- Other values
- HIFLD Roads
- Primary Highway
- Secondary Highway
- Paved Road
- Dirt (Not Paved)
- Interstate Not Paved
- US Route Not Paved
- A - Arterial
- C - Collector
- PACE
- Alternate
- Primary



Unit Type	Label	Latitude (NAD83)	Longitude (NAD83)
Branch Break	Branch II	43° 20' 14.7" N	122° 42' 00.0" W
Division Break	Div A	43° 20' 52.0" N	122° 33' 00.0" W
Division Break	Div P	43° 20' 52.0" N	122° 33' 00.0" W
Drop Point	10	43° 20' 34.0" N	122° 44' 17.0" W
Drop Point	40	43° 17' 37.0" N	122° 32' 00.0" W
Drop Point	30	43° 20' 22.0" N	122° 36' 00.0" W
Drop Point	45	43° 20' 22.0" N	122° 36' 00.0" W
Water Source	Gravel Bin	43° 20' 37.0" N	122° 43' 50.0" W
Water Source	Steamboat Helispot	43° 21' 22.0" N	122° 42' 00.0" W
Water Source	Station State Airport	43° 15' 40.0" N	122° 35' 22.0" W
Other	6-11	43° 15' 24.0" N	122° 35' 00.0" W
Other	6-11	43° 15' 24.0" N	122° 35' 00.0" W
Value at Risk	Steamboat Substation	43° 20' 12.0" N	122° 42' 00.0" W
Value at Risk	Station State Airport	43° 15' 40.0" N	122° 35' 22.0" W
Drop Point	62	43° 17' 07.0" N	122° 34' 20.0" W
Drop Point	63	43° 17' 07.0" N	122° 34' 20.0" W
Drop Point	64	43° 17' 07.0" N	122° 34' 20.0" W
Drop Point	65	43° 17' 07.0" N	122° 34' 20.0" W
Drop Point	66	43° 17' 07.0" N	122° 34' 20.0" W
Drop Point	67	43° 17' 07.0" N	122° 34' 20.0" W
Drop Point	68	43° 17' 07.0" N	122° 34' 20.0" W
Drop Point	69	43° 17' 07.0" N	122° 34' 20.0" W
Drop Point	70	43° 17' 07.0" N	122° 34' 20.0" W
Drop Point	71	43° 17' 07.0" N	122° 34' 20.0" W
Drop Point	72	43° 17' 07.0" N	122° 34' 20.0" W
Drop Point	73	43° 17' 07.0" N	122° 34' 20.0" W
Drop Point	74	43° 17' 07.0" N	122° 34' 20.0" W
Drop Point	75	43° 17' 07.0" N	122° 34' 20.0" W
Drop Point	76	43° 17' 07.0" N	122° 34' 20.0" W
Drop Point	77	43° 17' 07.0" N	122° 34' 20.0" W
Drop Point	78	43° 17' 07.0" N	122° 34' 20.0" W
Drop Point	79	43° 17' 07.0" N	122° 34' 20.0" W
Drop Point	80	43° 17' 07.0" N	122° 34' 20.0" W
Drop Point	81	43° 17' 07.0" N	122° 34' 20.0" W
Drop Point	82	43° 17' 07.0" N	122° 34' 20.0" W
Drop Point	83	43° 17' 07.0" N	122° 34' 20.0" W
Drop Point	84	43° 17' 07.0" N	122° 34' 20.0" W
Drop Point	85	43° 17' 07.0" N	122° 34' 20.0" W
Drop Point	86	43° 17' 07.0" N	122° 34' 20.0" W
Drop Point	87	43° 17' 07.0" N	122° 34' 20.0" W
Drop Point	88	43° 17' 07.0" N	122° 34' 20.0" W
Drop Point	89	43° 17' 07.0" N	122° 34' 20.0" W
Drop Point	90	43° 17' 07.0" N	122° 34' 20.0" W
Drop Point	91	43° 17' 07.0" N	122° 34' 20.0" W
Drop Point	92	43° 17' 07.0" N	122° 34' 20.0" W
Drop Point	93	43° 17' 07.0" N	122° 34' 20.0" W
Drop Point	94	43° 17' 07.0" N	122° 34' 20.0" W
Drop Point	95	43° 17' 07.0" N	122° 34' 20.0" W
Drop Point	96	43° 17' 07.0" N	122° 34' 20.0" W
Drop Point	97	43° 17' 07.0" N	122° 34' 20.0" W
Drop Point	98	43° 17' 07.0" N	122° 34' 20.0" W
Drop Point	99	43° 17' 07.0" N	122° 34' 20.0" W
Drop Point	100	43° 17' 07.0" N	122° 34' 20.0" W
Drop Point	101	43° 17' 07.0" N	122° 34' 20.0" W
Drop Point	102	43° 17' 07.0" N	122° 34' 20.0" W
Drop Point	103	43° 17' 07.0" N	122° 34' 20.0" W
Drop Point	104	43° 17' 07.0" N	122° 34' 20.0" W
Drop Point	105	43° 17' 07.0" N	122° 34' 20.0" W
Drop Point	106	43° 17' 07.0" N	122° 34' 20.0" W
Drop Point	107	43° 17' 07.0" N	122° 34' 20.0" W
Drop Point	108	43° 17' 07.0" N	122° 34' 20.0" W
Drop Point	109	43° 17' 07.0" N	122° 34' 20.0" W
Drop Point	110	43° 17' 07.0" N	122° 34' 20.0" W
Drop Point	111	43° 17' 07.0" N	122° 34' 20.0" W
Drop Point	112	43° 17' 07.0" N	122° 34' 20.0" W
Drop Point	113	43° 17' 07.0" N	122° 34' 20.0" W
Drop Point	114	43° 17' 07.0" N	122° 34' 20.0" W
Drop Point	115	43° 17' 07.0" N	122° 34' 20.0" W
Drop Point	116	43° 17' 07.0" N	122° 34' 20.0" W
Drop Point	117	43° 17' 07.0" N	122° 34' 20.0" W
Drop Point	118	43° 17' 07.0" N	122° 34' 20.0" W
Drop Point	119	43° 17' 07.0" N	122° 34' 20.0" W
Drop Point	120	43° 17' 07.0" N	122° 34' 20.0" W
Drop Point	121	43° 17' 07.0" N	122° 34' 20.0" W
Drop Point	122	43° 17' 07.0" N	122° 34' 20.0" W
Drop Point	123	43° 17' 07.0" N	122° 34' 20.0" W
Drop Point	124	43° 17' 07.0" N	122° 34' 20.0" W
Drop Point	125	43° 17' 07.0" N	122° 34' 20.0" W
Drop Point	126	43° 17' 07.0" N	122° 34' 20.0" W
Drop Point	127	43° 17' 07.0" N	122° 34' 20.0" W
Drop Point	128	43° 17' 07.0" N	122° 34' 20.0" W
Drop Point	129	43° 17' 07.0" N	122° 34' 20.0" W
Drop Point	130	43° 17' 07.0" N	122° 34' 20.0" W
Drop Point	131	43° 17' 07.0" N	122° 34' 20.0" W
Drop Point	132	43° 17' 07.0" N	122° 34' 20.0" W
Drop Point	133	43° 17' 07.0" N	122° 34' 20.0" W
Drop Point	134	43° 17' 07.0" N	122° 34' 20.0" W
Drop Point	135	43° 17' 07.0" N	122° 34' 20.0" W
Drop Point	136	43° 17' 07.0" N	122° 34' 20.0" W
Drop Point	137	43° 17' 07.0" N	122° 34' 20.0" W
Drop Point	138	43° 17' 07.0" N	122° 34' 20.0" W
Drop Point	139	43° 17' 07.0" N	122° 34' 20.0" W
Drop Point	140	43° 17' 07.0" N	122° 34' 20.0" W
Drop Point	141	43° 17' 07.0" N	122° 34' 20.0" W
Drop Point	142	43° 17' 07.0" N	122° 34' 20.0" W
Drop Point	143	43° 17' 07.0" N	122° 34' 20.0" W
Drop Point	144	43° 17' 07.0" N	122° 34' 20.0" W
Drop Point	145	43° 17' 07.0" N	122° 34' 20.0" W
Drop Point	146	43° 17' 07.0" N	122° 34' 20.0" W
Drop Point	147	43° 17' 07.0" N	122° 34' 20.0" W
Drop Point	148	43° 17' 07.0" N	122° 34' 20.0" W
Drop Point	149	43° 17' 07.0" N	122° 34' 20.0" W
Drop Point	150	43° 17' 07.0" N	122° 34' 20.0" W

122°51.5'W 122°50.5'W 122°49.5'W 122°48.5'W 122°47.5'W 122°46.5'W 122°45.5'W 122°44.5'W 122°43.5'W 122°42.5'W 122°41.5'W 122°40.5'W 122°39.5'W 122°38.5'W 122°37.5'W 122°36.5'W 122°35.5'W 122°34.5'W 122°33.5'W 122°32.5'W 122°31.5'W 122°30.5'W 122°29.5'W 122°28.5'W 122°27.5'W 122°26.5'W 122°25.5'W



43°23.5'N 43°22.5'N 43°21.5'N 43°20.5'N 43°19.5'N 43°18.5'N 43°17.5'N 43°16.5'N 43°15.5'N 43°14.5'N 43°13.5'N 43°12.5'N 43°11.5'N 43°10.5'N 43°9.5'N