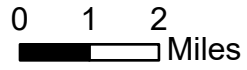


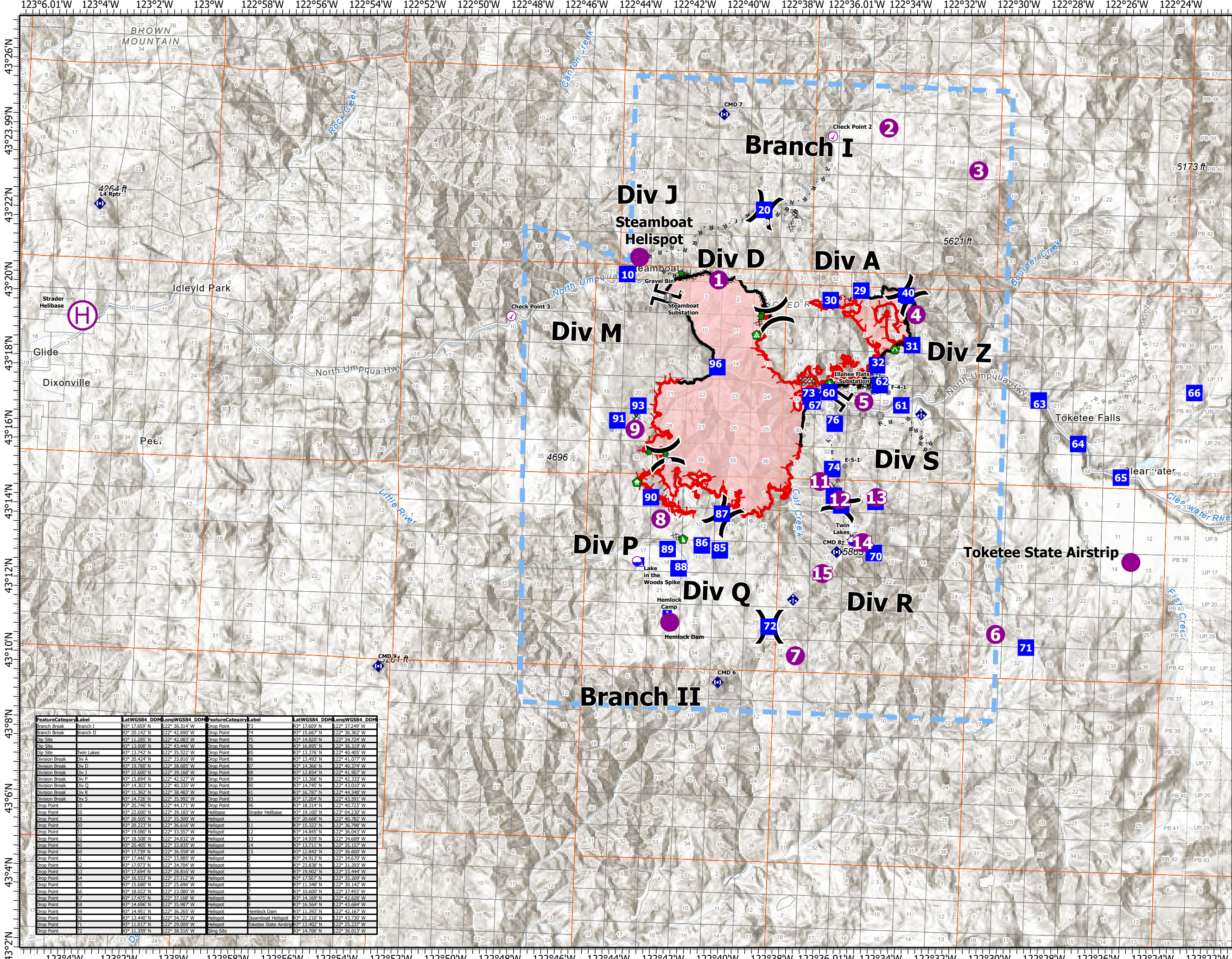
# Pilots Map

Jack Fire  
OR-UPF-000265  
07/17/2021 - 24hr

16667 acres at 07/15/2021 2220



- ▬ Wildfire Daily Fire Perimeter
- XX Completed Dozer Line
- H Completed Hand Line
- R Completed Road as Line
- XX Planned Dozer Line
- H Planned Hand Line
- R Planned Road as Line
- ▬ Retardant Drop
- ▬ Temporary Flight Restriction
- ▬ Fire Edge
- ▬ Contained Line
- Helispot
- Dip Site
- Drop Point
- Sling Site
- Check Point
- Mobile Retardant Base
- ⊕ Helibase
- X Division Break
- | Branch Break
- ▬ Incident Command Post
- ⬆ Camp
- Value at Risk
- Other
- Bridge
- Structure Wrap
- Repair Point
- Landing or Log Deck
- Hazard Tree
- Dozer Push
- Culvert
- Mobile Weather Unit
- Repeater



Feature	Category	Label	LatWGS84	DDM	LongWGS84	DDM	Feature	Category	Label	LatWGS84	DDM	LongWGS84	DDM
Branch Break	Branch I		43° 17.659'	N	122° 36.314'	W	Drop Point		73	43° 17.609'	N	122° 37.249'	W
Branch Break	Branch II		43° 20.142'	N	122° 42.690'	W	Drop Point		74	43° 15.667'	N	122° 36.362'	W
Dip Site			43° 11.285'	N	122° 42.083'	W	Drop Point		75	43° 14.820'	N	122° 34.724'	W
Dip Site			43° 13.008'	N	122° 43.446'	W	Drop Point		76	43° 16.895'	N	122° 36.319'	W
Dip Site			43° 13.742'	N	122° 38.523'	W	Drop Point		77	43° 13.776'	N	122° 40.405'	W
Division Break	Div A		43° 20.424'	N	122° 33.816'	W	Drop Point		78	43° 13.493'	N	122° 41.077'	W
Division Break	Div D		43° 19.780'	N	122° 38.685'	W	Drop Point		79	43° 14.366'	N	122° 40.374'	W
Division Break	Div J		43° 22.600'	N	122° 39.168'	W	Drop Point		80	43° 12.854'	N	122° 41.907'	W
Division Break	Div P		43° 15.894'	N	122° 42.527'	W	Drop Point		81	43° 13.366'	N	122° 42.333'	W
Division Break	Div Q		43° 14.303'	N	122° 40.335'	W	Drop Point		82	43° 14.745'	N	122° 43.010'	W
Division Break	Div R		43° 11.362'	N	122° 38.483'	W	Drop Point		83	43° 16.787'	N	122° 44.348'	W
Division Break	Div S		43° 14.246'	N	122° 38.992'	W	Drop Point		84	43° 17.204'	N	122° 43.591'	W
Drop Point		10	43° 20.746'	N	122° 44.171'	W	Drop Point		85	43° 18.514'	N	122° 40.723'	W
Drop Point		20	43° 22.600'	N	122° 39.183'	W	Helibase		Strader Helibase	43° 19.100'	N	122° 04.230'	W
Drop Point		29	43° 20.505'	N	122° 35.500'	W	Helispot			43° 20.668'	N	122° 40.782'	W
Drop Point		30	43° 20.223'	N	122° 36.616'	W	Helispot			43° 15.322'	N	122° 36.798'	W
Drop Point		31	43° 19.080'	N	122° 33.557'	W	Helispot			43° 14.845'	N	122° 36.043'	W
Drop Point		32	43° 18.508'	N	122° 34.832'	W	Helispot			43° 14.939'	N	122° 34.689'	W
Drop Point		40	43° 20.405'	N	122° 33.833'	W	Helispot			43° 13.711'	N	122° 33.157'	W
Drop Point		50	43° 17.739'	N	122° 36.558'	W	Helispot			43° 18.942'	N	122° 36.600'	W
Drop Point		51	43° 17.446'	N	122° 33.885'	W	Helispot			43° 24.913'	N	122° 34.670'	W
Drop Point		52	43° 17.973'	N	122° 34.704'	W	Helispot			43° 23.838'	N	122° 31.293'	W
Drop Point		53	43° 17.694'	N	122° 28.816'	W	Helispot			43° 19.902'	N	122° 33.444'	W
Drop Point		54	43° 16.553'	N	122° 27.312'	W	Helispot			43° 17.507'	N	122° 35.269'	W
Drop Point		55	43° 15.680'	N	122° 25.695'	W	Helispot			43° 11.468'	N	122° 38.142'	W
Drop Point		56	43° 18.022'	N	122° 23.800'	W	Helispot			43° 10.607'	N	122° 37.497'	W
Drop Point		57	43° 17.475'	N	122° 37.168'	W	Helispot			43° 14.169'	N	122° 42.626'	W
Drop Point		58	43° 14.696'	N	122° 35.987'	W	Helispot			43° 16.564'	N	122° 43.684'	W
Drop Point		59	43° 14.951'	N	122° 36.265'	W	Helispot			43° 11.393'	N	122° 42.167'	W
Drop Point		70	43° 13.440'	N	122° 34.727'	W	Helispot			43° 21.210'	N	122° 43.730'	W
Drop Point		71	43° 11.017'	N	122° 29.009'	W	Helispot			43° 13.402'	N	122° 25.237'	W
Drop Point		72	43° 11.359'	N	122° 38.516'	W	Helispot			43° 14.706'	N	122° 36.013'	W



NW Team 9  
7/17/2021 0524  
Acres from IR  
North American 1983 Datum. LatLong Grid