

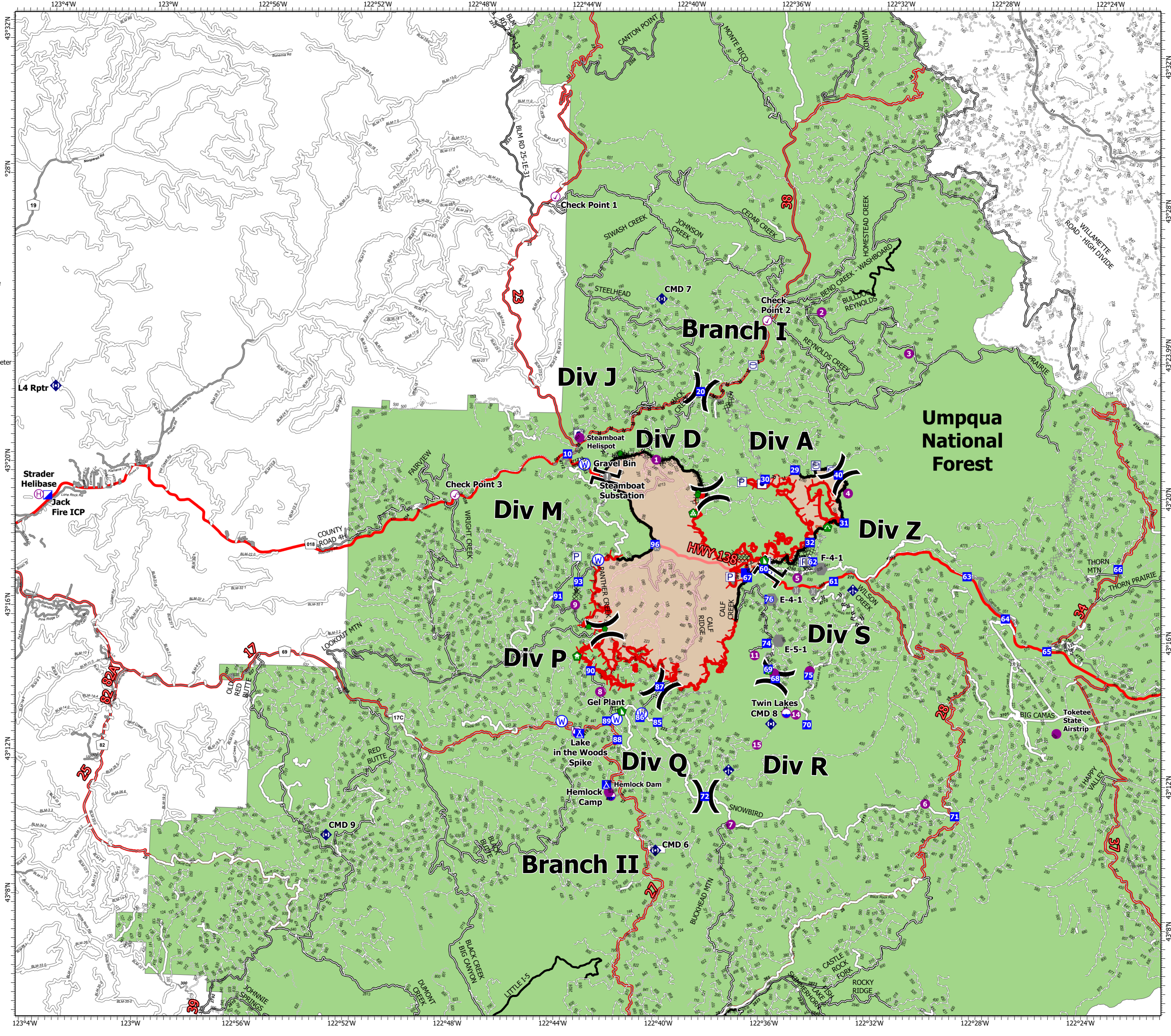
# Transportation Map

Jack Fire  
 OR-UPF-000265  
 07/17/2021 - 24hr  
 16667 acres at 07/15/2021 2220



- Other Property
- Pump
- Water Tank
- Check Point
- Dip Site
- Mobile Retardant Base
- Helipoint
- Helibase
- Sling Site
- Division Break
- Branch Break
- Incident Command Post
- Drop Point
- Camp
- Value at Risk
- Other
- Bridge
- Structure Wrap
- Repair Point
- Landing or Log Deck
- Hazard Tree
- Dozer Push
- Culvert
- Mobile Weather Unit
- Repeater
- Water Source
- Completed Dozer Line
- Completed Hand Line
- Completed Road as Line
- Planned Dozer Line
- Planned Hand Line
- Planned Road as Line
- Retardant Drop
- Fire Edge
- Contained Line
- Wildfire Daily Fire Perimeter
- Administrative Forest

FC Point Type	Label	Latitude WGS84 DDM	Longitude WGS84 DDM
Check Point	Check Point 1	43° 27.881' N	122° 44.961' W
Check Point	Check Point 2	43° 24.635' N	122° 36.729' W
Check Point	Check Point 3	43° 19.502' N	122° 48.395' W
Drop Point	10	43° 20.746' N	122° 44.171' W
Drop Point	20	43° 22.600' N	122° 39.183' W
Drop Point	29	43° 20.505' N	122° 35.500' W
Drop Point	30	43° 20.223' N	122° 36.616' W
Drop Point	31	43° 19.080' N	122° 33.557' W
Drop Point	32	43° 18.508' N	122° 34.832' W
Drop Point	40	43° 20.405' N	122° 33.835' W
Drop Point	60	43° 17.739' N	122° 36.558' W
Drop Point	61	43° 17.446' N	122° 33.885' W
Drop Point	62	43° 17.973' N	122° 34.704' W
Drop Point	63	43° 17.694' N	122° 28.816' W
Drop Point	64	43° 16.553' N	122° 27.312' W
Drop Point	65	43° 15.680' N	122° 25.696' W
Drop Point	66	43° 18.022' N	122° 23.080' W
Drop Point	67	43° 17.475' N	122° 37.168' W
Drop Point	68	43° 14.696' N	122° 35.987' W
Drop Point	69	43° 14.951' N	122° 36.265' W
Drop Point	70	43° 13.440' N	122° 34.727' W
Drop Point	71	43° 11.017' N	122° 29.009' W
Drop Point	72	43° 11.359' N	122° 38.516' W
Drop Point	73	43° 17.609' N	122° 37.249' W
Drop Point	74	43° 15.667' N	122° 36.362' W
Drop Point	75	43° 14.820' N	122° 34.724' W
Drop Point	76	43° 16.895' N	122° 36.319' W
Drop Point	85	43° 13.376' N	122° 40.405' W
Drop Point	86	43° 13.493' N	122° 41.077' W
Drop Point	87	43° 14.366' N	122° 40.374' W
Drop Point	88	43° 12.854' N	122° 41.907' W
Drop Point	89	43° 13.366' N	122° 42.333' W
Drop Point	90	43° 14.745' N	122° 43.010' W
Drop Point	91	43° 16.787' N	122° 44.348' W
Drop Point	93	43° 17.204' N	122° 43.591' W
Drop Point	96	43° 18.314' N	122° 40.723' W



NW Team 9  
 7/16/2021 2124  
 Acres from IR  
 North American 1983 Datum, Lat/Long Grid

