

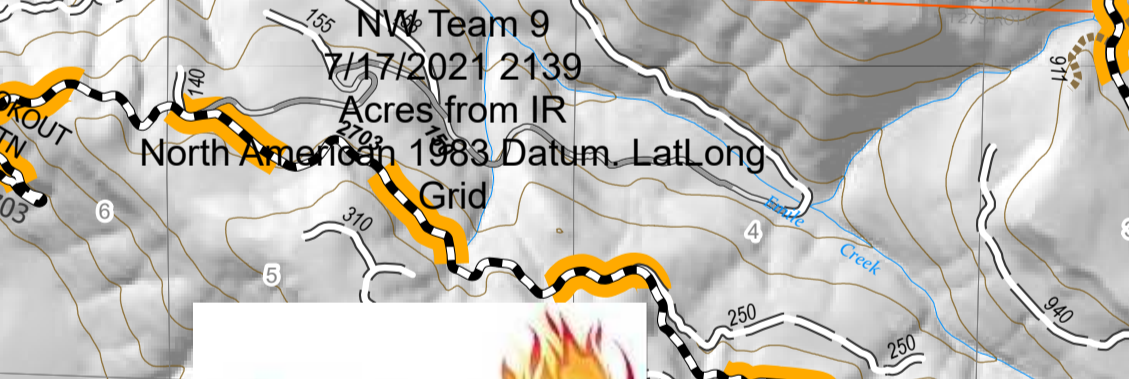
Operations Map

Jack Fire
 OR-UPF-000265
 07/18/2021 - 24hr

16764 acres at 07/16/2021 2200

0 0.5 Miles

NW Team 9
 7/17/2021 2139
 Acres from IR
 North American 1983 Datum, Lat/Long



Type	ID	Latitude/Longitude	Description
Branch II	90	43° 20' 30.0" N, 122° 42' 00.0" W	Branch II
Branch II	91	43° 20' 15.0" N, 122° 41' 45.0" W	Branch II
Branch II	92	43° 19' 50.0" N, 122° 41' 30.0" W	Branch II
Branch II	93	43° 19' 35.0" N, 122° 41' 15.0" W	Branch II
Branch II	94	43° 19' 20.0" N, 122° 41' 00.0" W	Branch II
Branch II	95	43° 19' 05.0" N, 122° 40' 45.0" W	Branch II
Branch II	96	43° 18' 50.0" N, 122° 40' 30.0" W	Branch II
Branch II	97	43° 18' 35.0" N, 122° 40' 15.0" W	Branch II
Branch II	98	43° 18' 20.0" N, 122° 40' 00.0" W	Branch II
Branch II	99	43° 18' 05.0" N, 122° 39' 45.0" W	Branch II
Branch II	100	43° 17' 50.0" N, 122° 39' 30.0" W	Branch II
Branch II	101	43° 17' 35.0" N, 122° 39' 15.0" W	Branch II
Branch II	102	43° 17' 20.0" N, 122° 39' 00.0" W	Branch II
Branch II	103	43° 17' 05.0" N, 122° 38' 45.0" W	Branch II
Branch II	104	43° 16' 50.0" N, 122° 38' 30.0" W	Branch II
Branch II	105	43° 16' 35.0" N, 122° 38' 15.0" W	Branch II
Branch II	106	43° 16' 20.0" N, 122° 38' 00.0" W	Branch II
Branch II	107	43° 16' 05.0" N, 122° 37' 45.0" W	Branch II
Branch II	108	43° 15' 50.0" N, 122° 37' 30.0" W	Branch II
Branch II	109	43° 15' 35.0" N, 122° 37' 15.0" W	Branch II
Branch II	110	43° 15' 20.0" N, 122° 37' 00.0" W	Branch II
Branch II	111	43° 15' 05.0" N, 122° 36' 45.0" W	Branch II
Branch II	112	43° 14' 50.0" N, 122° 36' 30.0" W	Branch II
Branch II	113	43° 14' 35.0" N, 122° 36' 15.0" W	Branch II
Branch II	114	43° 14' 20.0" N, 122° 36' 00.0" W	Branch II
Branch II	115	43° 14' 05.0" N, 122° 35' 45.0" W	Branch II
Branch II	116	43° 13' 50.0" N, 122° 35' 30.0" W	Branch II
Branch II	117	43° 13' 35.0" N, 122° 35' 15.0" W	Branch II
Branch II	118	43° 13' 20.0" N, 122° 35' 00.0" W	Branch II
Branch II	119	43° 13' 05.0" N, 122° 34' 45.0" W	Branch II
Branch II	120	43° 12' 50.0" N, 122° 34' 30.0" W	Branch II
Branch II	121	43° 12' 35.0" N, 122° 34' 15.0" W	Branch II
Branch II	122	43° 12' 20.0" N, 122° 34' 00.0" W	Branch II
Branch II	123	43° 12' 05.0" N, 122° 33' 45.0" W	Branch II
Branch II	124	43° 11' 50.0" N, 122° 33' 30.0" W	Branch II
Branch II	125	43° 11' 35.0" N, 122° 33' 15.0" W	Branch II
Branch II	126	43° 11' 20.0" N, 122° 33' 00.0" W	Branch II
Branch II	127	43° 11' 05.0" N, 122° 32' 45.0" W	Branch II
Branch II	128	43° 10' 50.0" N, 122° 32' 30.0" W	Branch II
Branch II	129	43° 10' 35.0" N, 122° 32' 15.0" W	Branch II
Branch II	130	43° 10' 20.0" N, 122° 32' 00.0" W	Branch II
Branch II	131	43° 10' 05.0" N, 122° 31' 45.0" W	Branch II
Branch II	132	43° 09' 50.0" N, 122° 31' 30.0" W	Branch II
Branch II	133	43° 09' 35.0" N, 122° 31' 15.0" W	Branch II
Branch II	134	43° 09' 20.0" N, 122° 31' 00.0" W	Branch II
Branch II	135	43° 09' 05.0" N, 122° 30' 45.0" W	Branch II
Branch II	136	43° 08' 50.0" N, 122° 30' 30.0" W	Branch II
Branch II	137	43° 08' 35.0" N, 122° 30' 15.0" W	Branch II
Branch II	138	43° 08' 20.0" N, 122° 30' 00.0" W	Branch II
Branch II	139	43° 08' 05.0" N, 122° 29' 45.0" W	Branch II
Branch II	140	43° 07' 50.0" N, 122° 29' 30.0" W	Branch II
Branch II	141	43° 07' 35.0" N, 122° 29' 15.0" W	Branch II
Branch II	142	43° 07' 20.0" N, 122° 29' 00.0" W	Branch II
Branch II	143	43° 07' 05.0" N, 122° 28' 45.0" W	Branch II
Branch II	144	43° 06' 50.0" N, 122° 28' 30.0" W	Branch II
Branch II	145	43° 06' 35.0" N, 122° 28' 15.0" W	Branch II
Branch II	146	43° 06' 20.0" N, 122° 28' 00.0" W	Branch II
Branch II	147	43° 06' 05.0" N, 122° 27' 45.0" W	Branch II
Branch II	148	43° 05' 50.0" N, 122° 27' 30.0" W	Branch II
Branch II	149	43° 05' 35.0" N, 122° 27' 15.0" W	Branch II
Branch II	150	43° 05' 20.0" N, 122° 27' 00.0" W	Branch II

