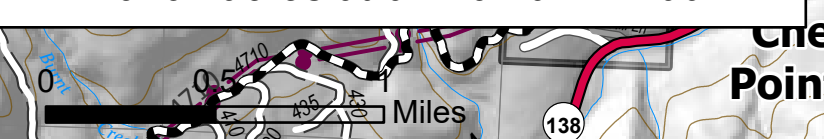


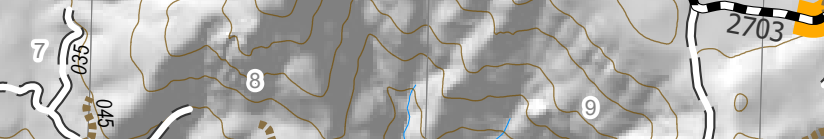
Operations Map

Branch II

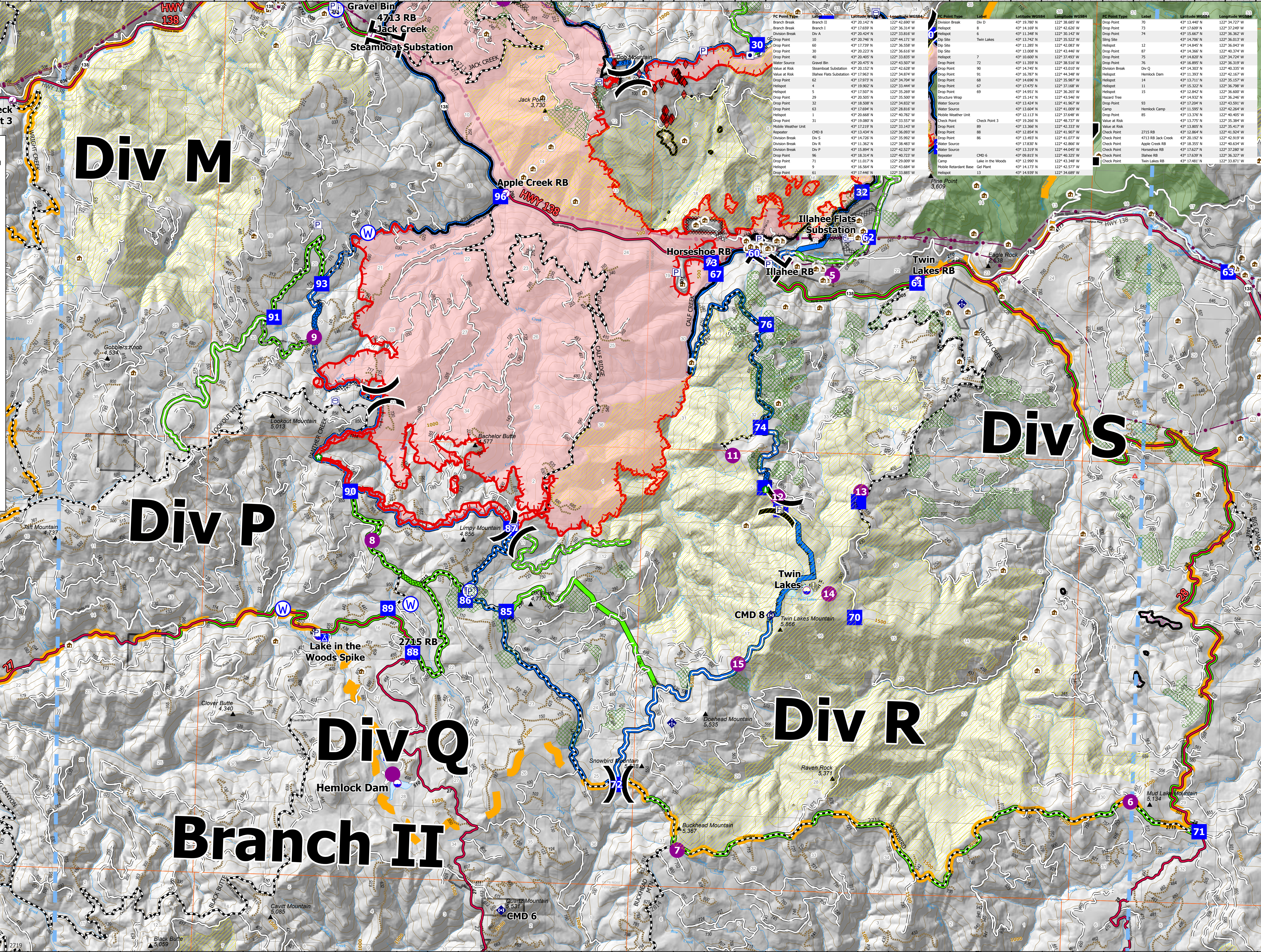
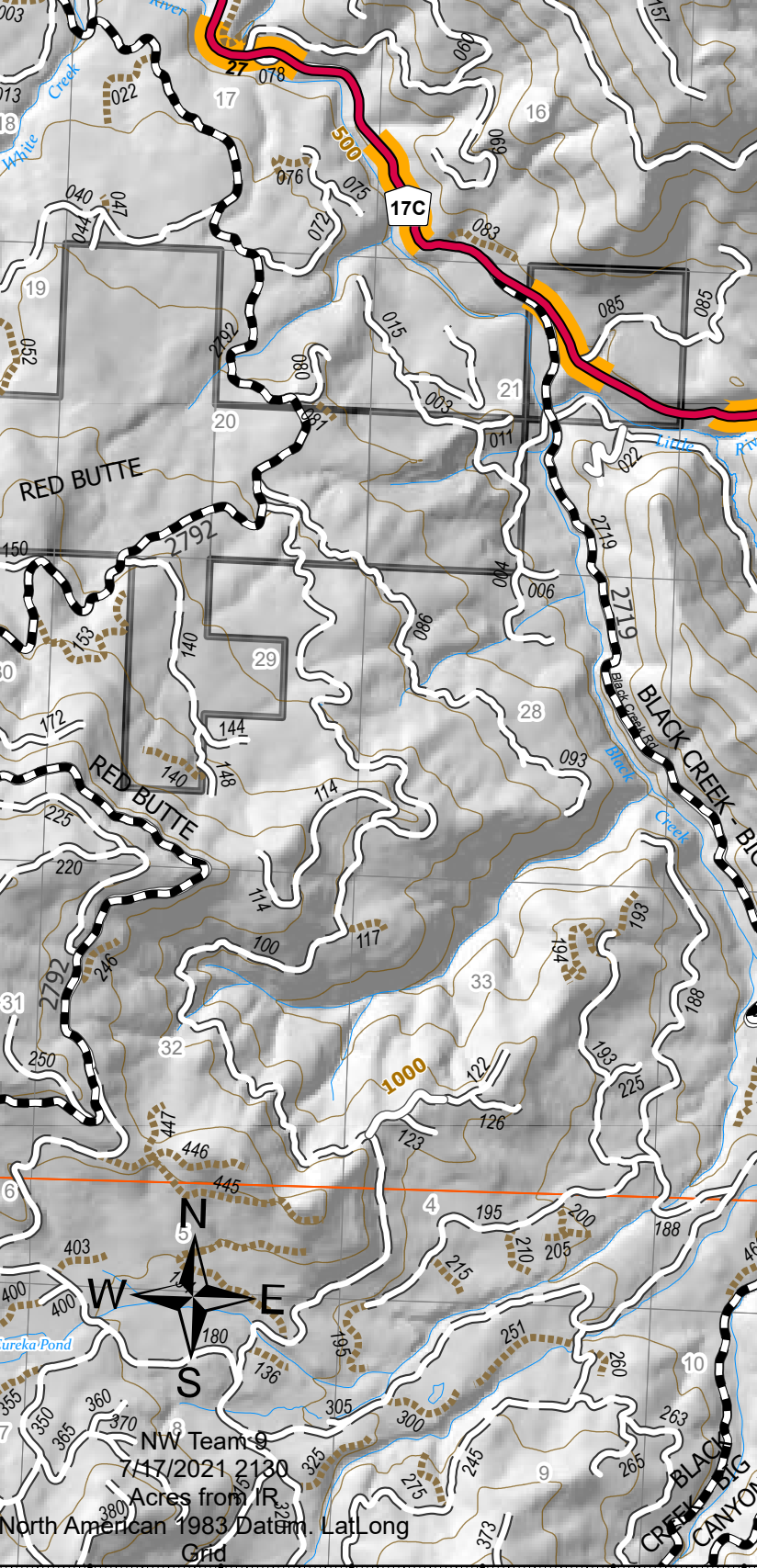
Jack Fire
OR-UPF-000265
07/18/2021 - 24hr
16764 acres at 07/16/2021 2200



- Summit
 - JackFireStructures_pt
 - ATP
 - Other Property
 - Pump
 - Water Tank
 - Check Point
 - Dip Site
 - Mobile Retardant Base
 - Helispot
 - Sling Site
 - Division Break
 - Branch Break
 - Drop Point
 - Camp
 - Value at Risk
 - Structure Wrap
 - Hazard Tree
 - Mobile Weather Unit
 - Repeater
 - Water Source
 - Completed Dozer Line
 - Completed Hand Line
 - Completed Road as Line
 - Planned Road as Line
 - Retardant Drop
 - Temporary Flight Restriction
 - Fire Edge
 - Contained Line
 - Other
 - Wildfire Daily Fire Perimeter
- Contours 100ft
 - Area Closure
 - Roadless Areas Inventoried
 - Timber Sale
 - Area to Protect (ATP)
 - Land Ownership
 - PV
 - <all other values>
 - Forest Service Land
 - Wilderness
 - Protracted Section
 - Section
 - Township
- HIFLHD Roads
 - Primary Highway
 - Secondary Highway
 - Paved Roads
 - Dirt (Not Paved)
 - Interstate Not Paved
 - US Route Not Paved
 - A - Arterial
 - C - Collector
- Forest Service Roads
 - Paved Road
 - Gravel Road
 - Dirt Roads
 - Unimproved Roads
 - Unspecified
 - Closed Roads
 - <all other values>
- NHDWaterbody
 - Lake / Pond
 - Lake / Pond (Intermittent)
 - Reservoir
 - NHDFlowline
 - Stream/River



North American 1983 Datum, Laidong Grid



FC Point Type	Label	Latitude WGS84	Longitude WGS84
Branch Break	Branch II	43° 20.142' N	122° 42.690' W
Branch Break	Branch I	43° 17.659' N	122° 36.314' W
Division Break	Div A	43° 20.424' N	122° 33.816' W
Drop Point	60	43° 20.740' N	122° 44.214' W
Drop Point	60	43° 17.739' N	122° 36.558' W
Drop Point	30	43° 20.223' N	122° 36.616' W
Drop Point	40	43° 20.402' N	122° 33.835' W
Drop Point	4	43° 20.902' N	122° 33.444' W
Value at Risk	Illahoe Flats Substation	43° 20.152' N	122° 42.628' W
Value at Risk	Gravel Bin	43° 17.963' N	122° 34.874' W
Drop Point	62	43° 17.973' N	122° 34.704' W
Drop Point	63	43° 17.298' N	122° 28.816' W
Drop Point	5	43° 17.507' N	122° 35.269' W
Drop Point	29	43° 20.505' N	122° 35.500' W
Drop Point	22	43° 18.808' N	122° 34.327' W
Drop Point	63	43° 17.298' N	122° 28.816' W
Drop Point	1	43° 16.668' N	122° 40.782' W
Drop Point	31	43° 19.089' N	122° 33.557' W
Drop Point	89	43° 17.239' N	122° 33.443' W
Repeater	CHD 8	43° 13.434' N	122° 36.993' W
Division Break	Div S	43° 14.726' N	122° 35.992' W
Division Break	Div R	43° 11.362' N	122° 38.483' W
Division Break	Div T	43° 15.894' N	122° 42.327' W
Drop Point	96	43° 18.314' N	122° 40.723' W
Drop Point	71	43° 11.017' N	122° 29.009' W
Drop Point	9	43° 16.564' N	122° 43.684' W
Drop Point	64	43° 17.440' N	122° 33.885' W
Drop Point	18	43° 17.440' N	122° 33.885' W

FC Point Type	Label	Latitude WGS84	Longitude WGS84
Division Break	Div D	43° 19.780' N	122° 38.685' W
Helispot	8	43° 14.169' N	122° 42.626' W
Drop Point	74	43° 11.348' N	122° 30.142' W
Sling Site	Twin Lakes	43° 12.942' N	122° 35.522' W
Helispot	12	43° 11.285' N	122° 42.083' W
Drop Point	87	43° 13.008' N	122° 43.446' W
Helispot	7	43° 10.600' N	122° 37.493' W
Drop Point	7	43° 11.559' N	122° 38.516' W
Drop Point	90	43° 14.745' N	122° 43.010' W
Drop Point	91	43° 16.787' N	122° 44.348' W
Drop Point	91	43° 14.696' N	122° 35.969' W
Drop Point	68	43° 12.478' N	122° 37.168' W
Drop Point	69	43° 14.951' N	122° 36.265' W
Structure Wrap		43° 15.141' N	122° 43.546' W
Water Source	Check Point 3	43° 19.266' N	122° 48.737' W
Water Source	88	43° 13.869' N	122° 42.332' W
Water Source	88	43° 12.854' N	122° 41.907' W
Water Source	88	43° 14.925' N	122° 41.077' W
Water Source	88	43° 17.830' N	122° 42.866' W
Water Source	88	43° 13.819' N	122° 44.045' W
Water Source	88	43° 09.815' N	122° 40.325' W
Camp	Lake in the Woods	43° 12.990' N	122° 43.348' W
Mobile Retardant Base	Gel Plant	43° 14.173' N	122° 42.577' W
Helispot	13	43° 14.539' N	122° 34.689' W

FC Point Type	Label	Latitude WGS84	Longitude WGS84
Drop Point	70	43° 13.400' N	122° 34.727' W
Drop Point	73	43° 17.609' N	122° 37.247' W
Drop Point	74	43° 15.667' N	122° 36.362' W
Drop Point	75	43° 14.706' N	122° 36.013' W
Helispot	12	43° 14.845' N	122° 36.043' W
Drop Point	87	43° 14.366' N	122° 40.374' W
Drop Point	75	43° 14.820' N	122° 34.724' W
Drop Point	75	43° 16.895' N	122° 36.319' W
Division Break	Div Q	43° 14.303' N	122° 42.335' W
Helispot	14	43° 13.711' N	122° 35.157' W
Helispot	11	43° 15.322' N	122° 36.798' W
Helispot	15	43° 12.842' N	122° 36.600' W
Helispot	14	43° 13.711' N	122° 35.157' W
Helispot	11	43° 15.322' N	122° 36.798' W
Helispot	15	43° 12.842' N	122° 36.600' W
Hazard Tree		43° 14.932' N	122° 36.246' W
Drop Point	93	43° 13.824' N	122° 40.591' W
Camp	Hemlock Camp	43° 11.995' N	122° 42.268' W
Drop Point	85	43° 13.376' N	122° 40.405' W
Value at Risk		43° 13.775' N	122° 35.384' W
Value at Risk		43° 13.805' N	122° 35.419' W
Check Point	2715 RB	43° 12.864' N	122° 41.928' W
Check Point	4713 RB Jack Creek	43° 20.192' N	122° 42.919' W
Check Point	Apple Creek RB	43° 18.355' N	122° 40.634' W
Check Point	Horseshoe RB	43° 17.627' N	122° 37.280' W
Check Point	Illahoe RB	43° 17.639' N	122° 36.327' W
Check Point	Twin Lakes RB	43° 17.481' N	122° 33.871' W