

Operations Map Div R/S/Q

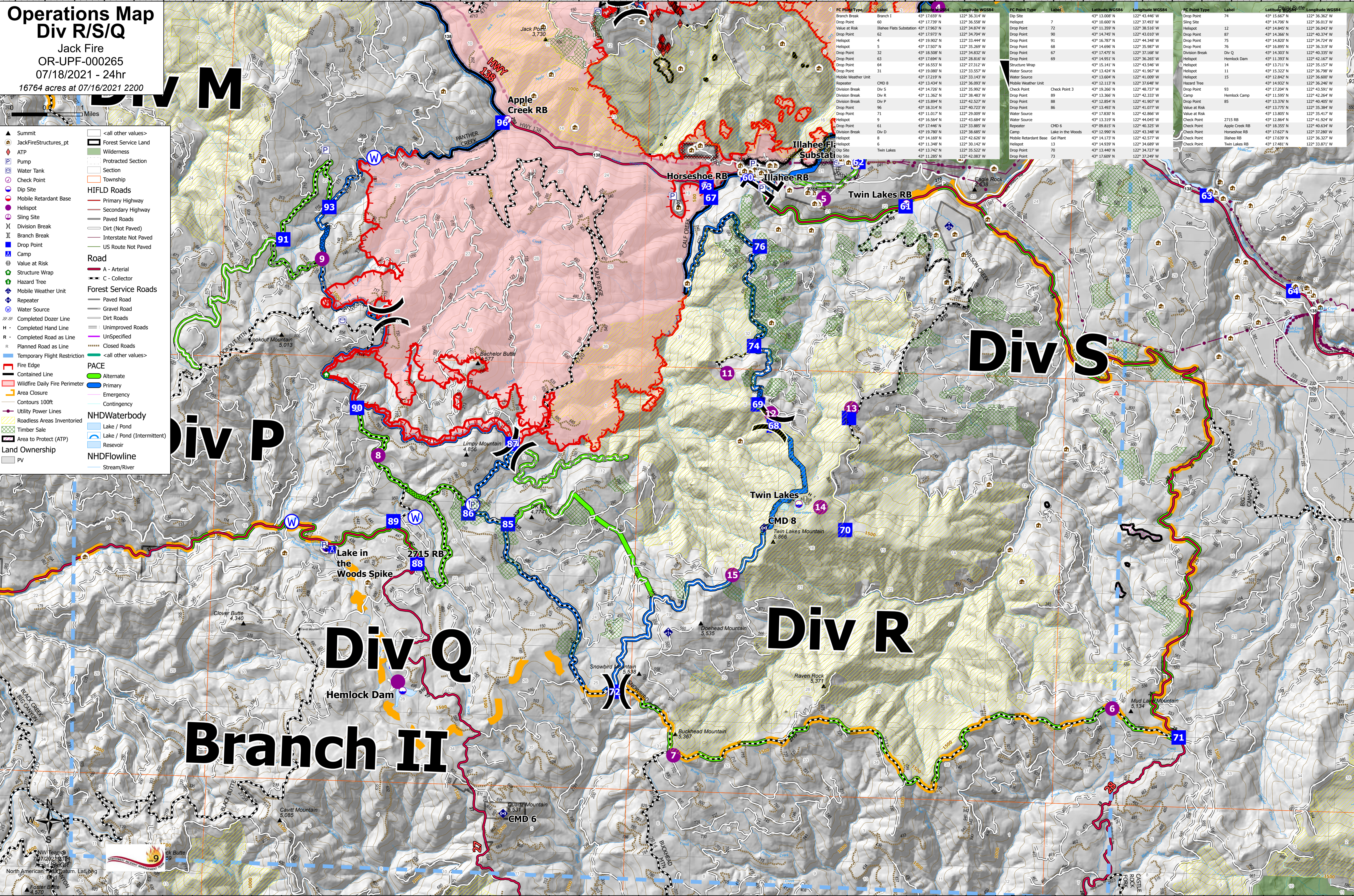
Jack Fire
OR-UPF-000265
07/18/2021 - 24hr
16764 acres at 07/16/2021 2200

- Summit
- JackFireStructures_pt
- ATP
- Pump
- Water Tank
- Check Point
- Dip Site
- Mobile Retardant Base
- Helispot
- Sling Site
- Division Break
- Branch Break
- Drop Point
- Camp
- Value at Risk
- Structure Wrap
- Hazard Tree
- Mobile Weather Unit
- Repeater
- Water Source
- Completed Dozer Line
- Completed Hand Line
- Completed Road as Line
- Planned Road as Line
- Temporary Flight Restriction
- Fire Edge
- Wildfire Daily Fire Perimeter
- Area Closure
- Contours 100ft
- Utility Power Lines
- Roadless Areas Inventoried
- Timber Sale
- Area to Protect (ATP)
- Land Ownership
- PV
- <all other values>
- Forest Service Land
- Wilderness
- Protracted Section
- Section
- Township
- HIFLD Roads
- Primary Highway
- Secondary Highway
- Paved Roads
- Dirt (Not Paved)
- Interstate Not Paved
- US Route Not Paved
- Road
- A - Arterial
- C - Collector
- Forest Service Roads
- Paved Road
- Gravel Road
- Dirt Roads
- Unimproved Roads
- Unspecified
- Closed Roads
- <all other values>
- PACE
- Alternate
- Primary
- Emergency
- Contingency
- NHDWaterbody
- Lake / Pond
- Lake / Pond (Intermittent)
- Reservoir
- NHDFlowline
- Stream/River

FC Point Type	Label	Latitude WGS84	Longitude WGS84
Branch Break	Branch I	43° 17.659' N	122° 36.314' W
Drop Point	60	43° 17.739' N	122° 36.558' W
Value at Risk	Illahee Flats Substation	43° 17.963' N	122° 34.874' W
Drop Point	62	43° 17.973' N	122° 34.704' W
Helispot	4	43° 19.902' N	122° 33.444' W
Helispot	5	43° 17.507' N	122° 35.269' W
Drop Point	32	43° 18.268' N	122° 34.623' W
Drop Point	63	43° 17.694' N	122° 28.816' W
Drop Point	64	43° 16.553' N	122° 27.312' W
Drop Point	31	43° 19.080' N	122° 33.557' W
Mobile Weather Unit		43° 17.219' N	122° 33.143' W
Repeater	CMD 8	43° 13.434' N	122° 36.093' W
Division Break	Div S	43° 14.795' N	122° 35.856' W
Division Break	Div R	43° 11.362' N	122° 38.483' W
Division Break	Div P	43° 15.894' N	122° 42.527' W
Drop Point	96	43° 18.314' N	122° 40.723' W
Drop Point	71	43° 11.017' N	122° 29.009' W
Helispot	9	43° 17.507' N	122° 43.684' W
Drop Point	61	43° 17.446' N	122° 33.885' W
Division Break	Div D	43° 19.780' N	122° 38.685' W
Helispot	8	43° 14.169' N	122° 42.626' W
Helispot	6	43° 11.348' N	122° 30.142' W
Dip Site	Twin Lakes	43° 11.285' N	122° 42.083' W

FC Point Type	Label	Latitude WGS84	Longitude WGS84
Dip Site	Check Point 3	43° 12.113' N	122° 37.648' W
Drop Point	89	43° 13.366' N	122° 42.333' W
Drop Point	88	43° 12.854' N	122° 41.077' W
Drop Point	86	43° 13.830' N	122° 41.866' W
Water Source		43° 12.113' N	122° 37.648' W
Water Source		43° 12.113' N	122° 37.648' W
Check Point		43° 12.113' N	122° 37.648' W
Repeater		43° 12.113' N	122° 37.648' W
Camp	Lake in the Woods	43° 13.366' N	122° 42.333' W
Mobile Retardant Base	Gel Plant	43° 12.990' N	122° 43.348' W
Helispot		43° 14.173' N	122° 42.577' W
Helispot		43° 14.939' N	122° 34.689' W
Drop Point		43° 13.440' N	122° 34.727' W
Drop Point		43° 17.609' N	122° 37.249' W

FC Point Type	Label	Latitude WGS84	Longitude WGS84
Drop Point	74	43° 15.587' N	122° 36.382' W
Helispot	12	43° 14.796' N	122° 36.013' W
Helispot	75	43° 14.845' N	122° 36.043' W
Drop Point	87	43° 14.366' N	122° 40.374' W
Drop Point	78	43° 14.820' N	122° 34.724' W
Drop Point	76	43° 14.895' N	122° 36.319' W
Division Break	Div Q	43° 14.383' N	122° 33.591' W
Helispot		43° 13.932' N	122° 42.167' W
Helispot		43° 13.711' N	122° 35.157' W
Helispot	14	43° 15.322' N	122° 36.798' W
Helispot	11	43° 12.842' N	122° 36.600' W
Hazard Tree		43° 14.932' N	122° 36.246' W
Drop Point	93	43° 12.891' N	122° 33.591' W
Camp	Hemlock Camp	43° 11.595' N	122° 42.264' W
Drop Point	85	43° 13.776' N	122° 40.405' W
Value at Risk		43° 13.775' N	122° 35.384' W
Helispot		43° 13.805' N	122° 35.417' W
Check Point	2715 RB	43° 12.864' N	122° 41.924' W
Check Point	Apple Creek RB	43° 12.851' N	122° 40.634' W
Check Point	Horseshoe RB	43° 17.627' N	122° 37.280' W
Check Point	Illahee RB	43° 17.639' N	122° 36.327' W
Check Point	Twin Lakes RB	43° 17.481' N	122° 33.871' W



North American 1983 Datum, Lat/Long