

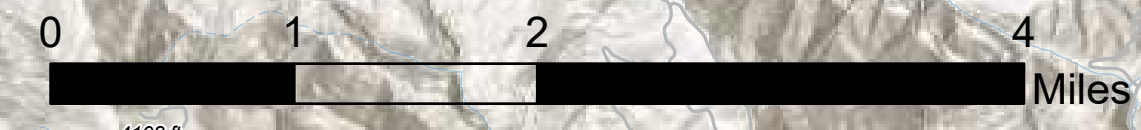
Pilots Map

Jack Fire

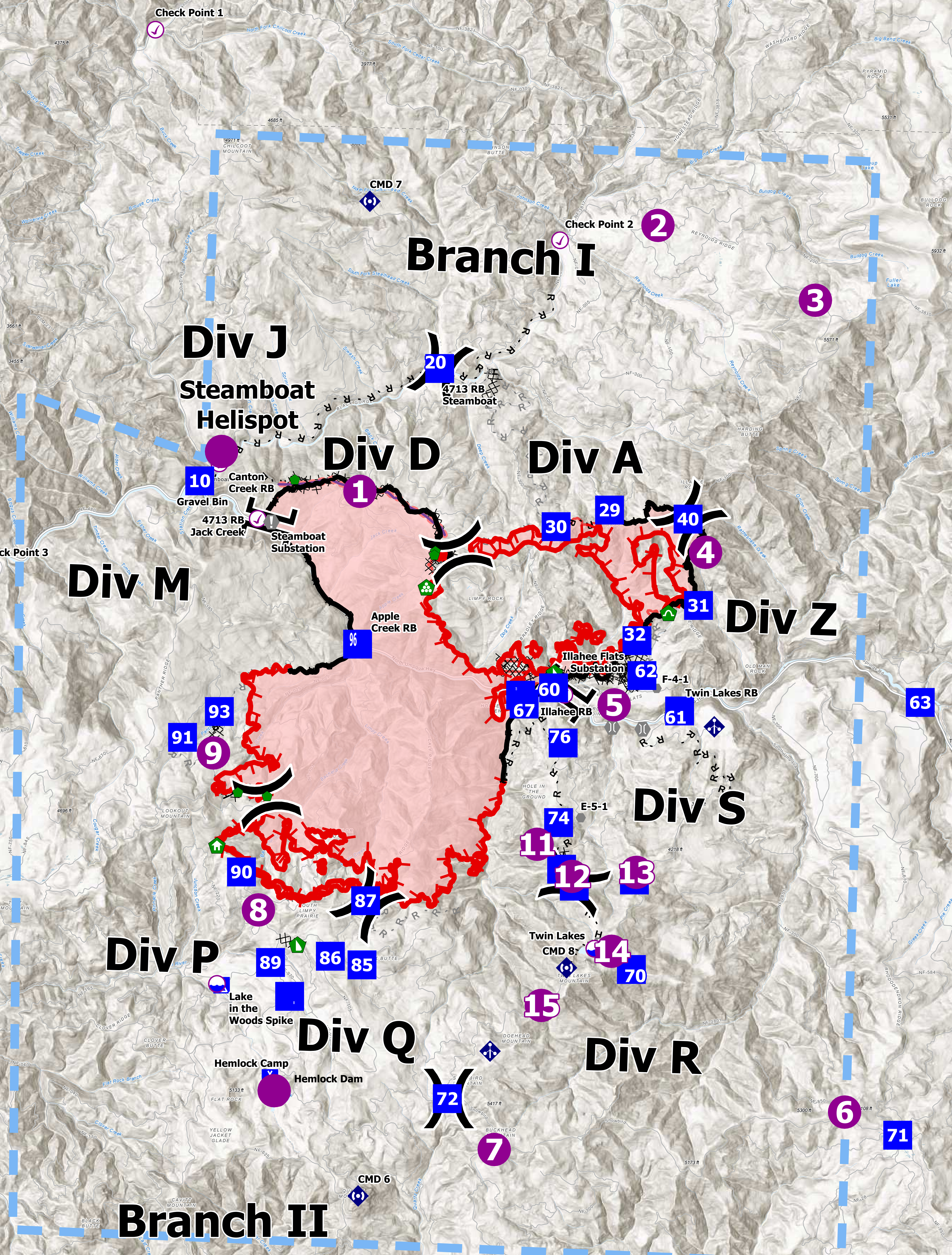
OR-UPF-000265

07/18/2021 - 24hr

16764 acres at 07/16/2021 2200



- Helispot
- Dip Site
- Drop Point
- Sling Site
- Check Point
- Mobile Retardant Base
- X Division Break
- II Branch Break
- Camp
- Value at Risk
- Other
- Bridge
- Structure Wrap
- Repair Point
- Landing or Log Deck
- Hazard Tree
- Dozer Push
- Culvert
- Mobile Weather Unit
- Repeater
- Completed Dozer Line
- Completed Hand Line
- Completed Road as Line
- Planned Dozer Line
- Planned Road as Line
- Retardant Drop
- Temporary Flight Restriction
- Fire Edge
- Contained Line
- Wildfire Daily Fire Perimeter



Toketee State Airstrip

Resource/Category	Label	Comments	Lat/Long
Branch Break	Branch I	101 Ch 14th road	42° 21' 12" N 122° 42' 00" W
Drop Site	10	4713 RB Jack Creek	42° 21' 12" N 122° 43' 44" W
Drop Site	11	Lake in the woods, approved	42° 21' 12" N 122° 43' 44" W
Drop Site	12	Train Lakes	42° 21' 12" N 122° 43' 44" W
Division Break	Div A	AJOC Break	42° 20' 42" N 122° 33' 00" W
Division Break	Div D	Div DA Break	42° 19' 30" N 122° 38' 00" W
Division Break	Div J	AJ1 Break	42° 22' 00" N 122° 38' 00" W
Division Break	Div P	RJP Break	42° 18' 00" N 122° 42' 57" W
Division Break	Div Q	CK Break	42° 14' 30" N 122° 40' 30" W
Division Break	Div R	RJP Break	42° 11' 30" N 122° 38' 00" W
Division Break	Div S	CK Break	42° 14' 30" N 122° 38' 00" W
Drop Point	20	4713 RB Steamboat	42° 20' 74" N 122° 44' 17" W
Drop Point	29	2 porta potties on site	42° 22' 00" N 122° 38' 00" W
Drop Point	30	DP 31	42° 20' 27" N 122° 36' 00" W
Drop Point	31	DP 31	42° 20' 27" N 122° 36' 00" W
Drop Point	32	DP 31	42° 18' 58" N 122° 34' 00" W
Drop Point	33	DP 31	42° 18' 58" N 122° 34' 00" W
Drop Point	34	DP 31	42° 18' 58" N 122° 34' 00" W
Drop Point	35	DP 31	42° 18' 58" N 122° 34' 00" W
Drop Point	36	DP 31	42° 18' 58" N 122° 34' 00" W
Drop Point	37	DP 31	42° 18' 58" N 122° 34' 00" W
Drop Point	38	DP 31	42° 18' 58" N 122° 34' 00" W
Drop Point	39	DP 31	42° 18' 58" N 122° 34' 00" W
Drop Point	40	DP 31	42° 18' 58" N 122° 34' 00" W
Drop Point	41	DP 31	42° 18' 58" N 122° 34' 00" W
Drop Point	42	DP 31	42° 18' 58" N 122° 34' 00" W
Drop Point	43	DP 31	42° 18' 58" N 122° 34' 00" W
Drop Point	44	DP 31	42° 18' 58" N 122° 34' 00" W
Drop Point	45	DP 31	42° 18' 58" N 122° 34' 00" W
Drop Point	46	DP 31	42° 18' 58" N 122° 34' 00" W
Drop Point	47	DP 31	42° 18' 58" N 122° 34' 00" W
Drop Point	48	DP 31	42° 18' 58" N 122° 34' 00" W
Drop Point	49	DP 31	42° 18' 58" N 122° 34' 00" W
Drop Point	50	DP 31	42° 18' 58" N 122° 34' 00" W
Drop Point	51	DP 31	42° 18' 58" N 122° 34' 00" W
Drop Point	52	DP 31	42° 18' 58" N 122° 34' 00" W
Drop Point	53	DP 31	42° 18' 58" N 122° 34' 00" W
Drop Point	54	DP 31	42° 18' 58" N 122° 34' 00" W
Drop Point	55	DP 31	42° 18' 58" N 122° 34' 00" W
Drop Point	56	DP 31	42° 18' 58" N 122° 34' 00" W
Drop Point	57	DP 31	42° 18' 58" N 122° 34' 00" W
Drop Point	58	DP 31	42° 18' 58" N 122° 34' 00" W
Drop Point	59	DP 31	42° 18' 58" N 122° 34' 00" W
Drop Point	60	DP 31	42° 18' 58" N 122° 34' 00" W
Drop Point	61	DP 31	42° 18' 58" N 122° 34' 00" W
Drop Point	62	DP 31	42° 18' 58" N 122° 34' 00" W
Drop Point	63	DP 31	42° 18' 58" N 122° 34' 00" W
Drop Point	64	DP 31	42° 18' 58" N 122° 34' 00" W
Drop Point	65	DP 31	42° 18' 58" N 122° 34' 00" W
Drop Point	66	DP 31	42° 18' 58" N 122° 34' 00" W
Drop Point	67	DP 31	42° 18' 58" N 122° 34' 00" W
Drop Point	68	DP 31	42° 18' 58" N 122° 34' 00" W
Drop Point	69	DP 31	42° 18' 58" N 122° 34' 00" W
Drop Point	70	DP 31	42° 18' 58" N 122° 34' 00" W
Drop Point	71	DP 31	42° 18' 58" N 122° 34' 00" W
Drop Point	72	DP 31	42° 18' 58" N 122° 34' 00" W
Drop Point	73	DP 31	42° 18' 58" N 122° 34' 00" W
Drop Point	74	DP 31	42° 18' 58" N 122° 34' 00" W
Drop Point	75	DP 31	42° 18' 58" N 122° 34' 00" W
Drop Point	76	DP 31	42° 18' 58" N 122° 34' 00" W
Drop Point	77	DP 31	42° 18' 58" N 122° 34' 00" W
Drop Point	78	DP 31	42° 18' 58" N 122° 34' 00" W
Drop Point	79	DP 31	42° 18' 58" N 122° 34' 00" W
Drop Point	80	DP 31	42° 18' 58" N 122° 34' 00" W
Drop Point	81	DP 31	42° 18' 58" N 122° 34' 00" W
Drop Point	82	DP 31	42° 18' 58" N 122° 34' 00" W
Drop Point	83	DP 31	42° 18' 58" N 122° 34' 00" W
Drop Point	84	DP 31	42° 18' 58" N 122° 34' 00" W
Drop Point	85	DP 31	42° 18' 58" N 122° 34' 00" W
Drop Point	86	DP 31	42° 18' 58" N 122° 34' 00" W
Drop Point	87	DP 31	42° 18' 58" N 122° 34' 00" W
Drop Point	88	DP 31	42° 18' 58" N 122° 34' 00" W
Drop Point	89	DP 31	42° 18' 58" N 122° 34' 00" W
Drop Point	90	DP 31	42° 18' 58" N 122° 34' 00" W
Drop Point	91	DP 31	42° 18' 58" N 122° 34' 00" W
Drop Point	92	DP 31	42° 18' 58" N 122° 34' 00" W
Drop Point	93	DP 31	42° 18' 58" N 122° 34' 00" W
Drop Point	94	DP 31	42° 18' 58" N 122° 34' 00" W
Drop Point	95	DP 31	42° 18' 58" N 122° 34' 00" W
Drop Point	96	DP 31	42° 18' 58" N 122° 34' 00" W
Drop Point	97	DP 31	42° 18' 58" N 122° 34' 00" W
Drop Point	98	DP 31	42° 18' 58" N 122° 34' 00" W
Drop Point	99	DP 31	42° 18' 58" N 122° 34' 00" W
Drop Point	100	DP 31	42° 18' 58" N 122° 34' 00" W



NW Team 9
7/17/2021 2214
Acres from IR
North American 1983 Datum, Lat, Long
Grid