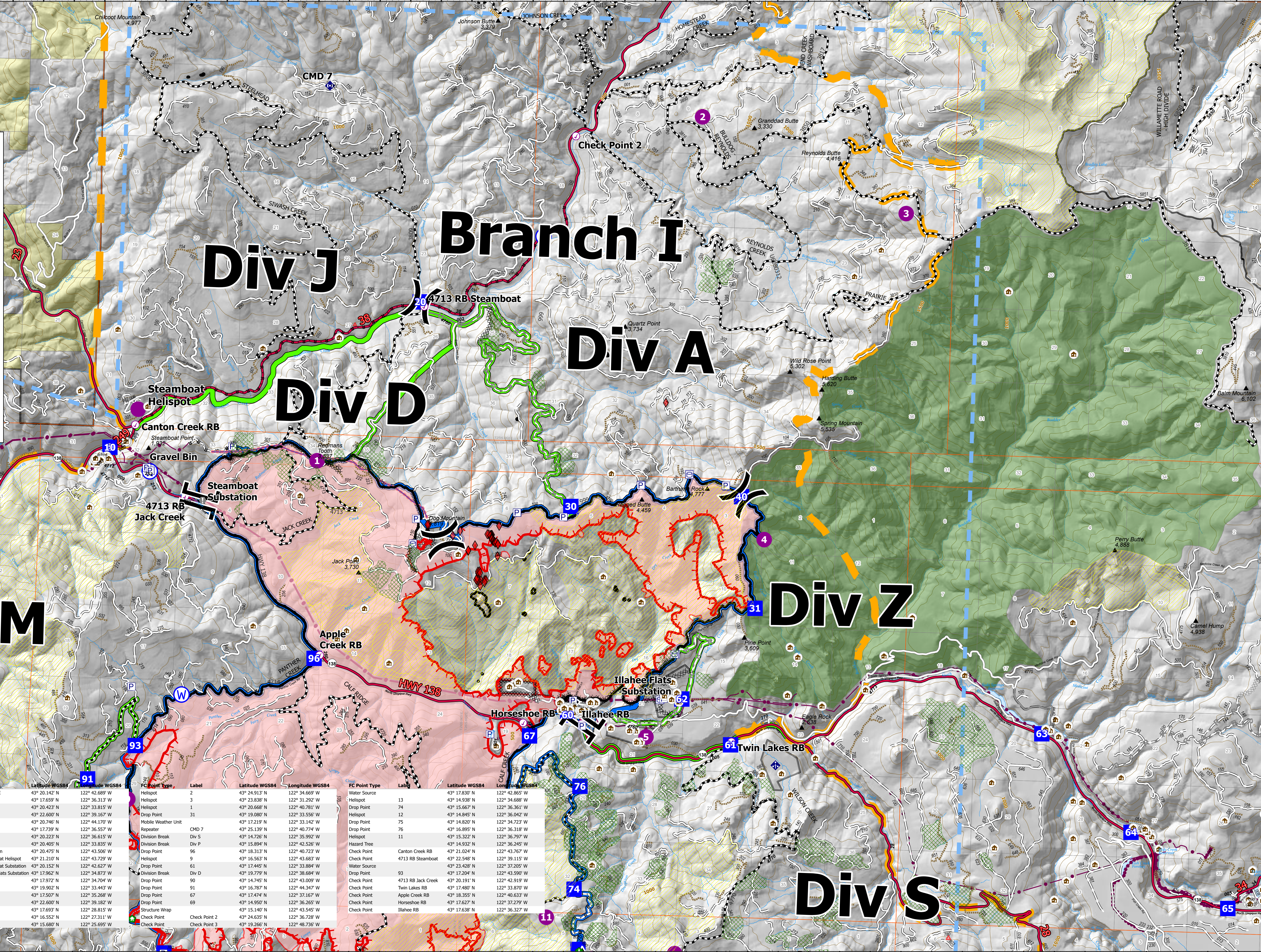


Operations Map
Branch I
 Jack
 OR-UPF-000265
 07/19/2021 - 24hr
 17994 acres at 07/18/2021 1645

- ▲ Summit
- JackFireStructures_pt
- ◆ ATP
- Other Property
- ⊞ Pump
- ⊞ Water Tank
- ⊞ Check Point
- ⊞ Helispot
- ⊞ Division Break
- ⊞ Branch Break
- ⊞ Drop Point
- ⊞ Value at Risk
- ⊞ Structure Wrap
- ⊞ Hazard Tree
- ⊞ Mobile Weather Unit
- ⊞ Repeater
- ⊞ Water Source
- ⊞ Completed Dozer Line
- ⊞ Completed Hand Line
- ⊞ Completed Road as Line
- ⊞ Planned Dozer Line
- ⊞ Planned Road as Line
- ⊞ Retardant Drop
- ⊞ Temporary Flight Restriction
- ⊞ Fire Edge
- ⊞ Contained Line
- ⊞ Wildfire Daily Fire Perimeter
- ⊞ Contours 100ft
- ⊞ Utility Power Lines
- ⊞ Area Closure
- ⊞ Roadless Areas Inventoried
- ▭ Timber Sale
- ▭ Area to Protect (ATP)
- ▭ Land Ownership
- ▭ BLM
- ▭ PV
- ▭ <call other values>
- ▭ Forest Service Land
- ▭ Wilderness
- ▭ Section
- ▭ Township
- ▭ HIFLD Roads
- ▭ Secondary Highway
- ▭ Paved Roads
- ▭ Dirt (Not Paved)
- ▭ A - Arterial
- ▭ C - Collector
- ▭ Forest Service Roads
- ▭ Paved Road
- ▭ Gravel Road
- ▭ Dirt Roads
- ▭ Unimproved Roads
- ▭ Unspecified
- ▭ Closed Roads
- ▭ <call other values>
- ▭ NHDWaterbody
- ▭ Lake / Pond
- ▭ Lake / Pond (Intermittent)
- ▭ NHDFlowline
- ▭ Stream/River

FC Point Type	Label	Latitude WGS84	Longitude WGS84	FC Point Type	Label	Latitude WGS84	Longitude WGS84
Branch II	2	43° 20.142' N	122° 42.689' W	Helispot	2	43° 24.913' N	122° 34.669' W
Branch I	3	43° 17.659' N	122° 36.313' W	Helispot	3	43° 23.838' N	122° 31.292' W
Division Break	Div A	43° 20.423' N	122° 40.781' W	Helispot	1	43° 20.668' N	122° 40.781' W
Division Break	Div J	43° 22.600' N	122° 39.167' W	Drop Point	31	43° 19.080' N	122° 33.556' W
Drop Point	10	43° 20.746' N	122° 44.170' W	Mobile Weather Unit	CMD 7	43° 17.219' N	122° 33.142' W
Drop Point	60	43° 17.739' N	122° 36.557' W	Repeater		43° 25.139' N	122° 40.774' W
Drop Point	30	43° 20.223' N	122° 36.615' W	Division Break	Div S	43° 14.726' N	122° 35.992' W
Drop Point	40	43° 20.405' N	122° 33.835' W	Division Break	Div P	43° 15.894' N	122° 42.526' W
Drop Point	43	43° 20.475' N	122° 43.506' W	Drop Point	96	43° 18.313' N	122° 40.723' W
Helispot	Steamboat Helispot	43° 21.210' N	122° 43.720' W	Helispot	9	43° 16.563' N	122° 43.663' W
Value at Risk	Steamboat Substation	43° 20.152' N	122° 42.637' W	Drop Point	61	43° 17.445' N	122° 33.884' W
Value at Risk	Illahee Flats Substation	43° 17.962' N	122° 34.873' W	Division Break	Div D	43° 19.729' N	122° 38.684' W
Drop Point	62	43° 17.972' N	122° 34.704' W	Drop Point	90	43° 14.745' N	122° 43.009' W
Drop Point	4	43° 19.902' N	122° 33.443' W	Drop Point	91	43° 16.787' N	122° 44.347' W
Helispot	5	43° 17.507' N	122° 35.268' W	Drop Point	67	43° 17.474' N	122° 37.167' W
Drop Point	20	43° 22.600' N	122° 39.182' W	Drop Point	69	43° 14.950' N	122° 36.265' W
Drop Point	63	43° 17.693' N	122° 38.815' W	Structure Wrap		43° 15.140' N	122° 43.545' W
Drop Point	64	43° 16.552' N	122° 27.311' W	Check Point	2	43° 24.635' N	122° 36.728' W
Drop Point	65	43° 15.680' N	122° 25.695' W	Check Point	3	43° 19.266' N	122° 48.736' W

North American 1983 Datum Lat/Long
 NV Team 9
 7/19/2021 0634
 Acres from IIS



122°48.5'W 122°47.5'W 122°46.5'W 122°45.5'W 122°44.5'W 122°43.5'W 122°42.5'W 122°41.5'W 122°40.5'W 122°39.5'W 122°38.5'W 122°37.5'W 122°36.5'W 122°35.5'W 122°34.5'W 122°33.5'W 122°32.5'W 122°31.5'W 122°30.5'W 122°29.5'W 122°28.5'W 122°27.5'W 122°26.5'W 122°25.5'W