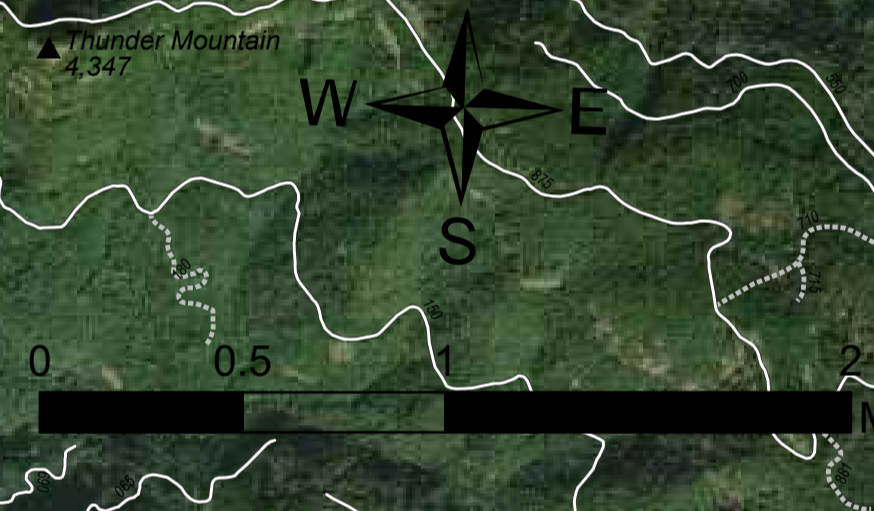


# Operations Map

Jack  
OR-UPF-000265  
07/19/2021 - 24hr

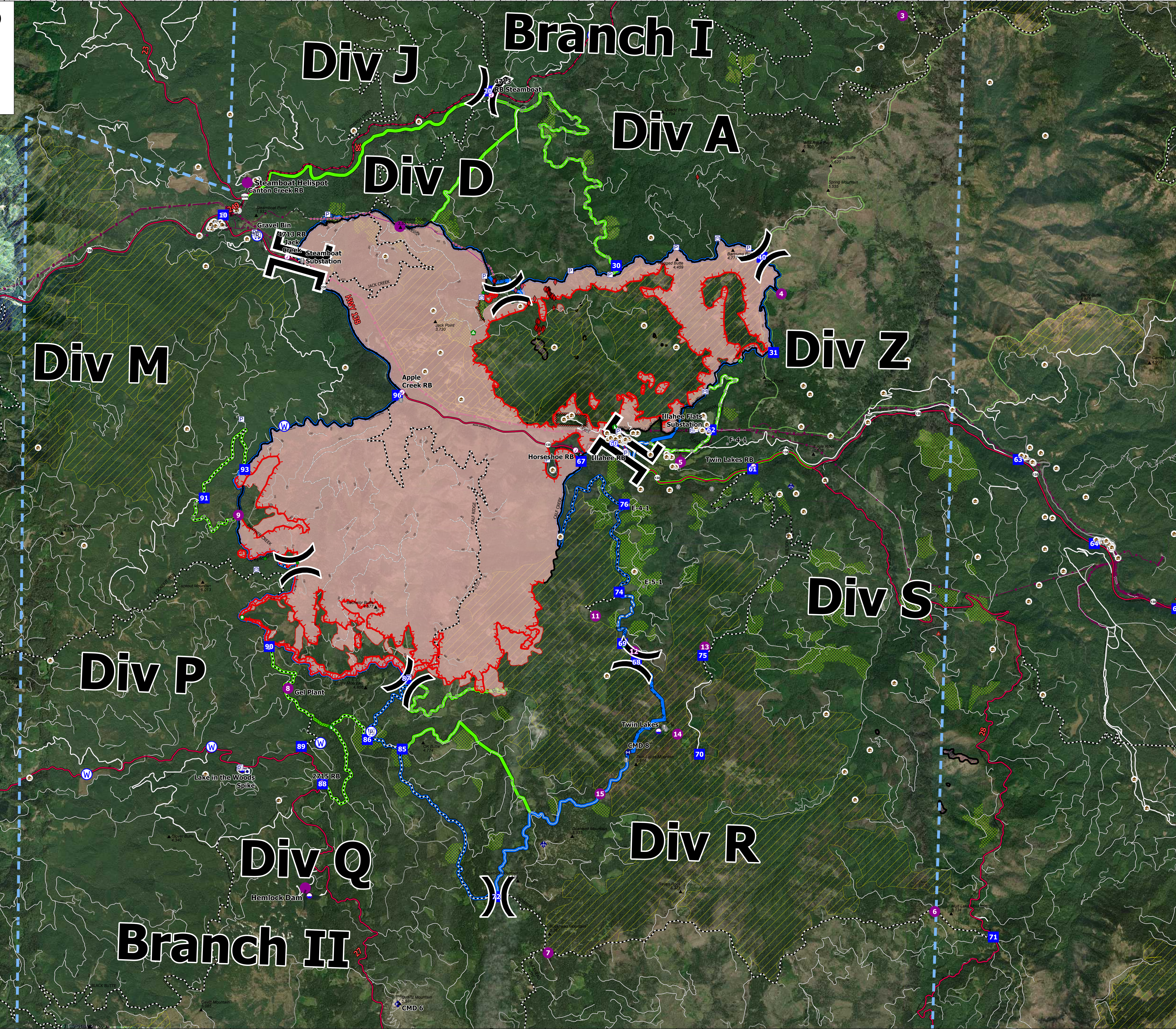
17994 acres at 07/18/2021 1645

- Summit
- JackFireStructures\_pt
- ATP
- Other Property
- Pump
- Water Tank
- Check Point
- Dip Site
- Mobile Retardant Base
- Helibase
- Sling Site
- Division Break
- Branch Break
- Drop Point
- Camp
- Value at Risk
- Other
- Structure Wrap
- Repair Point
- Landing or Log Deck
- Hazard Tree
- Dozer Push
- Culvert
- Mobile Weather Unit
- Repeater
- Water Source
- Completed Dozer Line
- Completed Hand Line
- Completed Road as Line
- Planned Dozer Line
- Planned Mixed Construction Line
- Planned Road as Line
- Retardant Drop
- Temporary Flight Restriction
- Fire Edge
- Contained Line
- Wildfire Daily Fire Perimeter
- Utility Power Lines
- Roadless Areas Inventoried
- Cal Units
- CC\_Alternative\_Final\_Units
- Dry Units
- JackFinalUnits
- Area to Protect (ATP)
- Wilderness
- Forest Service Roads
- Paved Road
- Gravel Road
- Dirt Roads
- Unimproved Roads
- Unspecified
- Closed Roads
- <all other values>
- HIFLD Roads
- Primary Highway
- Secondary Highway
- Paved Roads
- Dirt (Not Paved)
- Interstate Not Paved
- US Route Not Paved
- A - Arterial
- C - Collector
- Alternate
- Primary



Point Type	Label	Latitude (NAD83)	Longitude (NAD83)
Branch Break	Branch II	43° 20.142' N	122° 42.887' W
Division Break	Div A	43° 20.527' N	122° 33.813' W
Drop Point	10	43° 20.746' N	122° 44.170' W
Drop Point	30	43° 20.223' N	122° 36.613' W
Drop Point	40	43° 20.223' N	122° 36.613' W
Drop Point	50	43° 20.223' N	122° 36.613' W
Drop Point	60	43° 20.223' N	122° 36.613' W
Drop Point	70	43° 20.223' N	122° 36.613' W
Drop Point	80	43° 20.223' N	122° 36.613' W
Drop Point	90	43° 20.223' N	122° 36.613' W
Drop Point	100	43° 20.223' N	122° 36.613' W
Drop Point	110	43° 20.223' N	122° 36.613' W
Drop Point	120	43° 20.223' N	122° 36.613' W
Drop Point	130	43° 20.223' N	122° 36.613' W
Drop Point	140	43° 20.223' N	122° 36.613' W
Drop Point	150	43° 20.223' N	122° 36.613' W
Drop Point	160	43° 20.223' N	122° 36.613' W
Drop Point	170	43° 20.223' N	122° 36.613' W
Drop Point	180	43° 20.223' N	122° 36.613' W
Drop Point	190	43° 20.223' N	122° 36.613' W
Drop Point	200	43° 20.223' N	122° 36.613' W
Drop Point	210	43° 20.223' N	122° 36.613' W
Drop Point	220	43° 20.223' N	122° 36.613' W
Drop Point	230	43° 20.223' N	122° 36.613' W
Drop Point	240	43° 20.223' N	122° 36.613' W
Drop Point	250	43° 20.223' N	122° 36.613' W
Drop Point	260	43° 20.223' N	122° 36.613' W
Drop Point	270	43° 20.223' N	122° 36.613' W
Drop Point	280	43° 20.223' N	122° 36.613' W
Drop Point	290	43° 20.223' N	122° 36.613' W
Drop Point	300	43° 20.223' N	122° 36.613' W
Drop Point	310	43° 20.223' N	122° 36.613' W
Drop Point	320	43° 20.223' N	122° 36.613' W
Drop Point	330	43° 20.223' N	122° 36.613' W
Drop Point	340	43° 20.223' N	122° 36.613' W
Drop Point	350	43° 20.223' N	122° 36.613' W
Drop Point	360	43° 20.223' N	122° 36.613' W
Drop Point	370	43° 20.223' N	122° 36.613' W
Drop Point	380	43° 20.223' N	122° 36.613' W
Drop Point	390	43° 20.223' N	122° 36.613' W
Drop Point	400	43° 20.223' N	122° 36.613' W
Drop Point	410	43° 20.223' N	122° 36.613' W
Drop Point	420	43° 20.223' N	122° 36.613' W
Drop Point	430	43° 20.223' N	122° 36.613' W
Drop Point	440	43° 20.223' N	122° 36.613' W
Drop Point	450	43° 20.223' N	122° 36.613' W
Drop Point	460	43° 20.223' N	122° 36.613' W
Drop Point	470	43° 20.223' N	122° 36.613' W
Drop Point	480	43° 20.223' N	122° 36.613' W
Drop Point	490	43° 20.223' N	122° 36.613' W
Drop Point	500	43° 20.223' N	122° 36.613' W
Drop Point	510	43° 20.223' N	122° 36.613' W
Drop Point	520	43° 20.223' N	122° 36.613' W
Drop Point	530	43° 20.223' N	122° 36.613' W
Drop Point	540	43° 20.223' N	122° 36.613' W
Drop Point	550	43° 20.223' N	122° 36.613' W
Drop Point	560	43° 20.223' N	122° 36.613' W
Drop Point	570	43° 20.223' N	122° 36.613' W
Drop Point	580	43° 20.223' N	122° 36.613' W
Drop Point	590	43° 20.223' N	122° 36.613' W
Drop Point	600	43° 20.223' N	122° 36.613' W
Drop Point	610	43° 20.223' N	122° 36.613' W
Drop Point	620	43° 20.223' N	122° 36.613' W
Drop Point	630	43° 20.223' N	122° 36.613' W
Drop Point	640	43° 20.223' N	122° 36.613' W
Drop Point	650	43° 20.223' N	122° 36.613' W
Drop Point	660	43° 20.223' N	122° 36.613' W
Drop Point	670	43° 20.223' N	122° 36.613' W
Drop Point	680	43° 20.223' N	122° 36.613' W
Drop Point	690	43° 20.223' N	122° 36.613' W
Drop Point	700	43° 20.223' N	122° 36.613' W
Drop Point	710	43° 20.223' N	122° 36.613' W
Drop Point	720	43° 20.223' N	122° 36.613' W
Drop Point	730	43° 20.223' N	122° 36.613' W
Drop Point	740	43° 20.223' N	122° 36.613' W
Drop Point	750	43° 20.223' N	122° 36.613' W
Drop Point	760	43° 20.223' N	122° 36.613' W
Drop Point	770	43° 20.223' N	122° 36.613' W
Drop Point	780	43° 20.223' N	122° 36.613' W
Drop Point	790	43° 20.223' N	122° 36.613' W
Drop Point	800	43° 20.223' N	122° 36.613' W
Drop Point	810	43° 20.223' N	122° 36.613' W
Drop Point	820	43° 20.223' N	122° 36.613' W
Drop Point	830	43° 20.223' N	122° 36.613' W
Drop Point	840	43° 20.223' N	122° 36.613' W
Drop Point	850	43° 20.223' N	122° 36.613' W
Drop Point	860	43° 20.223' N	122° 36.613' W
Drop Point	870	43° 20.223' N	122° 36.613' W
Drop Point	880	43° 20.223' N	122° 36.613' W
Drop Point	890	43° 20.223' N	122° 36.613' W
Drop Point	900	43° 20.223' N	122° 36.613' W
Drop Point	910	43° 20.223' N	122° 36.613' W
Drop Point	920	43° 20.223' N	122° 36.613' W
Drop Point	930	43° 20.223' N	122° 36.613' W
Drop Point	940	43° 20.223' N	122° 36.613' W
Drop Point	950	43° 20.223' N	122° 36.613' W
Drop Point	960	43° 20.223' N	122° 36.613' W
Drop Point	970	43° 20.223' N	122° 36.613' W
Drop Point	980	43° 20.223' N	122° 36.613' W
Drop Point	990	43° 20.223' N	122° 36.613' W
Drop Point	1000	43° 20.223' N	122° 36.613' W

122°51.0'W 122°50.5'W 122°49.5'W 122°48.5'W 122°47.5'W 122°46.5'W 122°45.5'W 122°44.5'W 122°43.51'W 122°42.5'W 122°41.5'W 122°40.5'W 122°39.5'W 122°38.5'W 122°37.5'W 122°36.5'W 122°35.5'W 122°34.5'W 122°33.5'W 122°32.5'W 122°31.5'W 122°30.5'W 122°29.5'W 122°28.51'W 122°27.5'W 122°26.5'W 122°25.5'W



43°23'N 43°22.5'N 43°22'N 43°21.5'N 43°21'N 43°20.5'N 43°20'N 43°19.5'N 43°19'N 43°18.5'N 43°18'N 43°17.5'N 43°17'N 43°16.5'N 43°16'N 43°15.5'N 43°15'N 43°14.5'N 43°14'N 43°13.5'N 43°13'N 43°12.5'N 43°12'N 43°11.5'N 43°11'N 43°10.5'N 43°10'N 43°9.5'N 43°9'N 43°8.5'N 43°8'N 43°7.5'N 43°7'N 43°6.5'N 43°6'N 43°5.5'N 43°5'N 43°4.5'N 43°4'N 43°3.5'N 43°3'N 43°2.5'N 43°2'N 43°1.5'N 43°1'N 43°0.5'N 43°0'N