

# Transportation Map

Jack Fire  
OR-UPF-000265  
07/19/2021 - 24hr  
17092 acres at 07/17/2021 2200



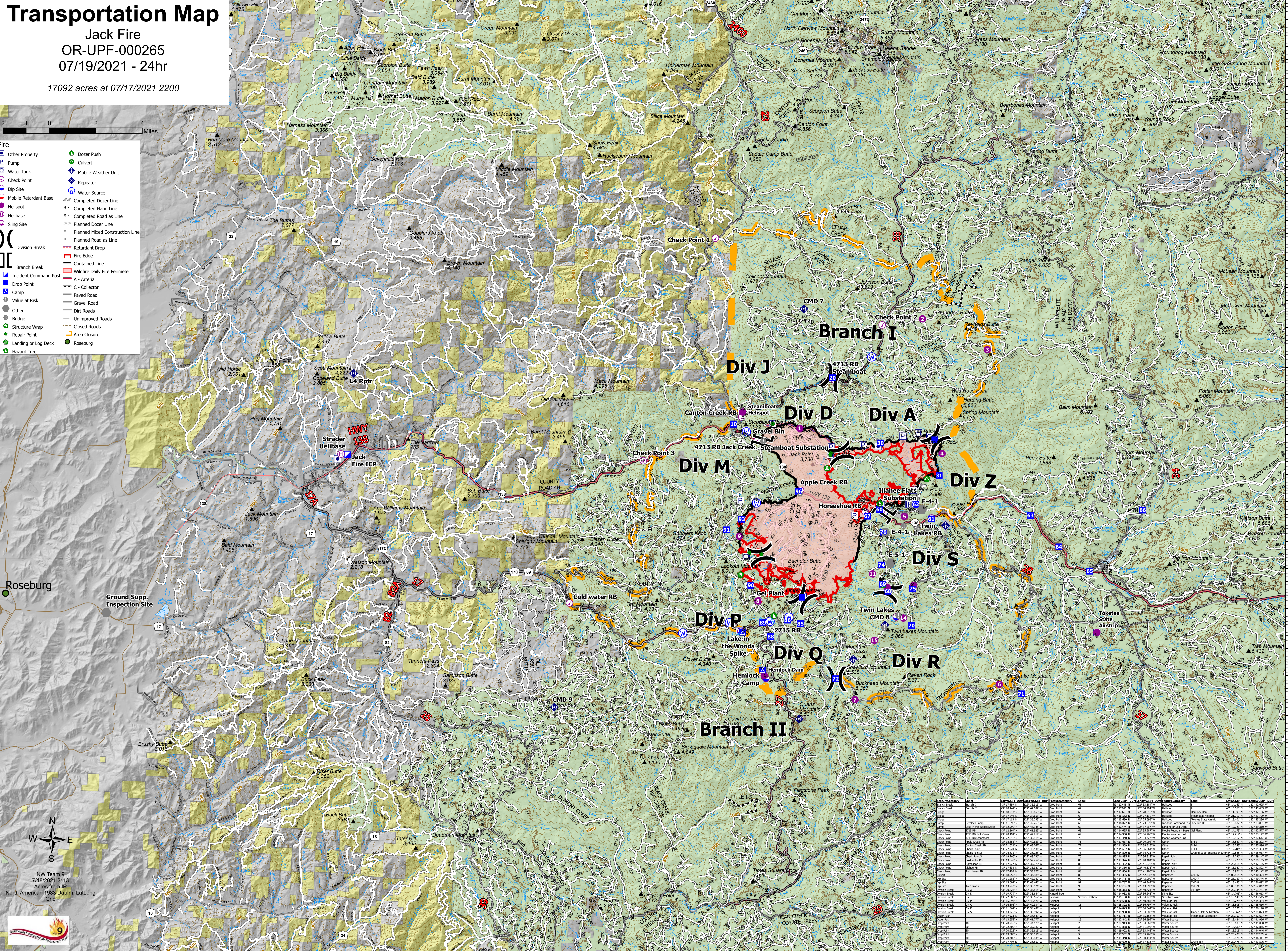
- Fire**
  - Other Property
  - Pump
  - Water Tank
  - Check Point
  - Dip Site
  - Mobile Retardant Base
  - Helispot
  - Helibase
  - Sling Site
  - Division Break
  - Branch Break
  - Incident Command Post
  - Drop Point
  - Camp
  - Value at Risk
  - Other
  - Bridge
  - Structure Wrap
  - Repair Point
  - Landing or Log Deck
  - Hazard Tree
- Infrastructure**
  - Dozer Push
  - Culvert
  - Mobile Weather Unit
  - Repeater
  - Water Source
  - Completed Dozer Line
  - Completed Hand Line
  - Completed Road as Line
  - Planned Dozer Line
  - Planned Mixed Construction Line
  - Planned Road as Line
  - Retardant Drop
  - Fire Edge
  - Contained Line
  - Wildfire Daily Fire Perimeter
  - A - Arterial
  - C - Collector
  - Paved Road
  - Gravel Road
  - Dirt Roads
  - Unimproved Roads
  - Closed Roads
  - Area Closure
  - Roseburg

Roseburg

Ground Supp. Inspection Site



NW Team 9  
7/18/2021 2:13  
Acres from IR  
North American 1983 Datum, Lat/Long  
Grid



FeatureCategory	label	latwgsda	lonwgsda	FeatureCategory	label	latwgsda	lonwgsda	FeatureCategory	label	latwgsda	lonwgsda
Branch	Branch I	43.21222	122.42892	Branch	Branch II	43.21222	122.42892				
Check Point	CP 1	43.21222	122.42892	Check Point	CP 2	43.21222	122.42892				
Drop Point	DP 1	43.21222	122.42892	Drop Point	DP 2	43.21222	122.42892				
Water Tank	WT 1	43.21222	122.42892	Water Tank	WT 2	43.21222	122.42892				
Mobile Retardant Base	MRB 1	43.21222	122.42892	Mobile Retardant Base	MRB 2	43.21222	122.42892				
Helispot	HS 1	43.21222	122.42892	Helispot	HS 2	43.21222	122.42892				
Helibase	HB 1	43.21222	122.42892	Helibase	HB 2	43.21222	122.42892				
Sling Site	SS 1	43.21222	122.42892	Sling Site	SS 2	43.21222	122.42892				
Division Break	DB 1	43.21222	122.42892	Division Break	DB 2	43.21222	122.42892				
Branch Break	BB 1	43.21222	122.42892	Branch Break	BB 2	43.21222	122.42892				
Incident Command Post	ICP 1	43.21222	122.42892	Incident Command Post	ICP 2	43.21222	122.42892				
Drop Point	DP 1	43.21222	122.42892	Drop Point	DP 2	43.21222	122.42892				
Camp	C 1	43.21222	122.42892	Camp	C 2	43.21222	122.42892				
Value at Risk	VAR 1	43.21222	122.42892	Value at Risk	VAR 2	43.21222	122.42892				
Other	O 1	43.21222	122.42892	Other	O 2	43.21222	122.42892				
Bridge	B 1	43.21222	122.42892	Bridge	B 2	43.21222	122.42892				
Structure Wrap	SW 1	43.21222	122.42892	Structure Wrap	SW 2	43.21222	122.42892				
Repair Point	RP 1	43.21222	122.42892	Repair Point	RP 2	43.21222	122.42892				
Landing or Log Deck	LLD 1	43.21222	122.42892	Landing or Log Deck	LLD 2	43.21222	122.42892				
Hazard Tree	HT 1	43.21222	122.42892	Hazard Tree	HT 2	43.21222	122.42892				