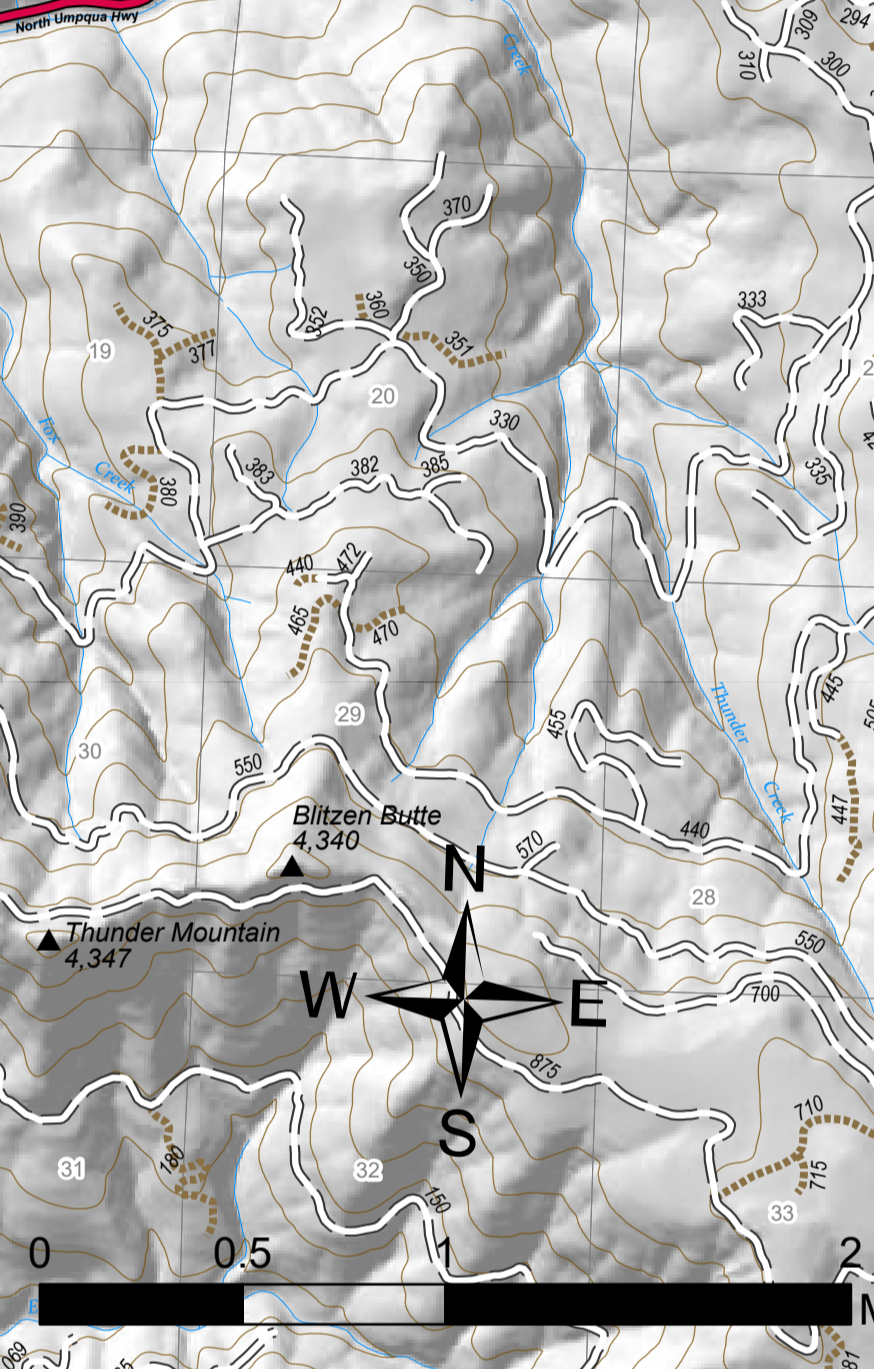


Operations Map

Jack
OR-UPF-000265
07/20/2021 - 24hr
18993 acres at 07/19/2021 1700

- Summit
 - JackFireStructures_pt
 - ATP
 - Other Property
 - Pump
 - Water Tank
 - Check Point
 - Dip Site
 - Mobile Retardant Base
 - Helispot
 - Sling Site
 - Division Break
 - Branch Break
 - Drop Point
 - Camp
 - Value at Risk
 - Structure Wrap
 - Hazard Tree
 - Mobile Weather Unit
 - Repeater
 - Water Source
 - Completed Dozer Line
 - Completed Road as Line
 - Planned Dozer Line
 - Planned Mixed Construction Line
 - Planned Road as Line
 - Retardant Drop
 - Temporary Flight Restriction
 - Fire Edge
 - Contained Line
 - Wildfire Daily Fire Perimeter
 - Area Closure
 - Alternate
- Contingency
 - Utility Power Lines
 - Contours 100ft
 - Roadless Areas Invented
 - Timber Sale
 - Area to Protect (ATP)
 - BLM
 - PV
 - <all other values>
 - Wilderness
 - Protracted Section
 - Section
 - Township
 - HIFLD Roads
 - Primary Highway
 - Secondary Highway
 - Paved Road
 - Dirt (Not Paved)
 - Interstate Not Paved
 - US Route Not Paved
 - A - Arterial
 - C - Collector
 - Unspecified
 - Closed Roads
 - Unimproved Roads
 - Dirt Roads
 - Unspecified
 - Closed Roads
 - <all other values>

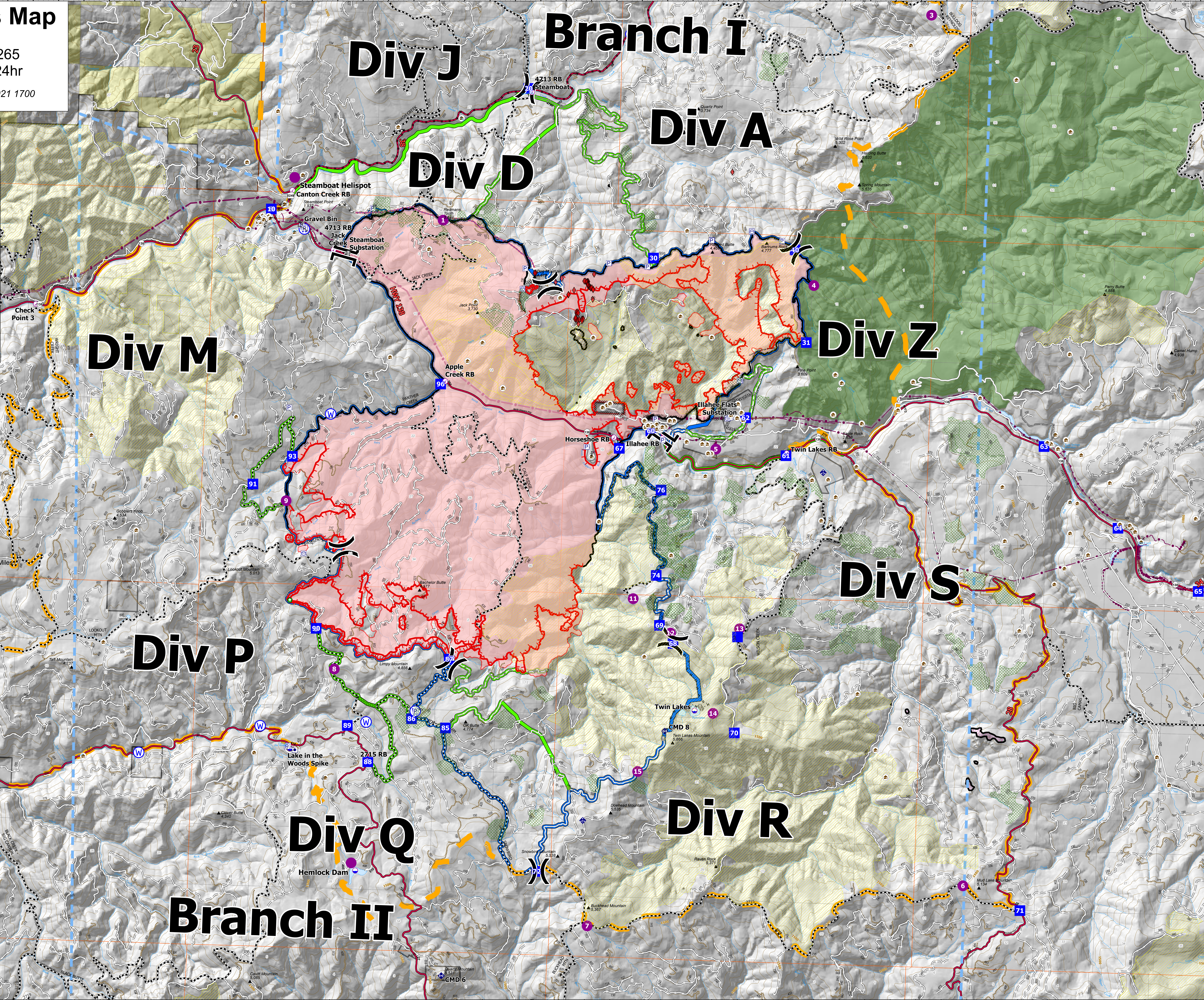


NW Team 9
7/20/2021 0620
Acres from IR
North America
Datum: LatLong
Grid



| Asset Type | ID | Latitude | Longitude | Acres |
|----------------|----------|---------------|----------------|-------|
| Branch Break | Branch 2 | 43° 21' 24" N | 122° 42' 08" W | 12 |
| Division Break | Div A | 43° 30' 02" N | 122° 33' 03" W | 12 |
| Drop Point | 10 | 43° 30' 24" N | 122° 44' 13" W | 12 |
| Drop Point | 30 | 43° 30' 23" N | 122° 36' 03" W | 12 |
| Drop Point | 31 | 43° 30' 23" N | 122° 36' 03" W | 12 |
| Drop Point | 32 | 43° 30' 23" N | 122° 36' 03" W | 12 |
| Drop Point | 33 | 43° 30' 23" N | 122° 36' 03" W | 12 |
| Drop Point | 34 | 43° 30' 23" N | 122° 36' 03" W | 12 |
| Drop Point | 35 | 43° 30' 23" N | 122° 36' 03" W | 12 |
| Drop Point | 36 | 43° 30' 23" N | 122° 36' 03" W | 12 |
| Drop Point | 37 | 43° 30' 23" N | 122° 36' 03" W | 12 |
| Drop Point | 38 | 43° 30' 23" N | 122° 36' 03" W | 12 |
| Drop Point | 39 | 43° 30' 23" N | 122° 36' 03" W | 12 |
| Drop Point | 40 | 43° 30' 23" N | 122° 36' 03" W | 12 |
| Drop Point | 41 | 43° 30' 23" N | 122° 36' 03" W | 12 |
| Drop Point | 42 | 43° 30' 23" N | 122° 36' 03" W | 12 |
| Drop Point | 43 | 43° 30' 23" N | 122° 36' 03" W | 12 |
| Drop Point | 44 | 43° 30' 23" N | 122° 36' 03" W | 12 |
| Drop Point | 45 | 43° 30' 23" N | 122° 36' 03" W | 12 |
| Drop Point | 46 | 43° 30' 23" N | 122° 36' 03" W | 12 |
| Drop Point | 47 | 43° 30' 23" N | 122° 36' 03" W | 12 |
| Drop Point | 48 | 43° 30' 23" N | 122° 36' 03" W | 12 |
| Drop Point | 49 | 43° 30' 23" N | 122° 36' 03" W | 12 |
| Drop Point | 50 | 43° 30' 23" N | 122° 36' 03" W | 12 |
| Drop Point | 51 | 43° 30' 23" N | 122° 36' 03" W | 12 |
| Drop Point | 52 | 43° 30' 23" N | 122° 36' 03" W | 12 |
| Drop Point | 53 | 43° 30' 23" N | 122° 36' 03" W | 12 |
| Drop Point | 54 | 43° 30' 23" N | 122° 36' 03" W | 12 |
| Drop Point | 55 | 43° 30' 23" N | 122° 36' 03" W | 12 |
| Drop Point | 56 | 43° 30' 23" N | 122° 36' 03" W | 12 |
| Drop Point | 57 | 43° 30' 23" N | 122° 36' 03" W | 12 |
| Drop Point | 58 | 43° 30' 23" N | 122° 36' 03" W | 12 |
| Drop Point | 59 | 43° 30' 23" N | 122° 36' 03" W | 12 |
| Drop Point | 60 | 43° 30' 23" N | 122° 36' 03" W | 12 |
| Drop Point | 61 | 43° 30' 23" N | 122° 36' 03" W | 12 |
| Drop Point | 62 | 43° 30' 23" N | 122° 36' 03" W | 12 |
| Drop Point | 63 | 43° 30' 23" N | 122° 36' 03" W | 12 |
| Drop Point | 64 | 43° 30' 23" N | 122° 36' 03" W | 12 |
| Drop Point | 65 | 43° 30' 23" N | 122° 36' 03" W | 12 |
| Drop Point | 66 | 43° 30' 23" N | 122° 36' 03" W | 12 |
| Drop Point | 67 | 43° 30' 23" N | 122° 36' 03" W | 12 |
| Drop Point | 68 | 43° 30' 23" N | 122° 36' 03" W | 12 |
| Drop Point | 69 | 43° 30' 23" N | 122° 36' 03" W | 12 |
| Drop Point | 70 | 43° 30' 23" N | 122° 36' 03" W | 12 |
| Drop Point | 71 | 43° 30' 23" N | 122° 36' 03" W | 12 |
| Drop Point | 72 | 43° 30' 23" N | 122° 36' 03" W | 12 |
| Drop Point | 73 | 43° 30' 23" N | 122° 36' 03" W | 12 |
| Drop Point | 74 | 43° 30' 23" N | 122° 36' 03" W | 12 |
| Drop Point | 75 | 43° 30' 23" N | 122° 36' 03" W | 12 |
| Drop Point | 76 | 43° 30' 23" N | 122° 36' 03" W | 12 |
| Drop Point | 77 | 43° 30' 23" N | 122° 36' 03" W | 12 |
| Drop Point | 78 | 43° 30' 23" N | 122° 36' 03" W | 12 |
| Drop Point | 79 | 43° 30' 23" N | 122° 36' 03" W | 12 |
| Drop Point | 80 | 43° 30' 23" N | 122° 36' 03" W | 12 |
| Drop Point | 81 | 43° 30' 23" N | 122° 36' 03" W | 12 |
| Drop Point | 82 | 43° 30' 23" N | 122° 36' 03" W | 12 |
| Drop Point | 83 | 43° 30' 23" N | 122° 36' 03" W | 12 |
| Drop Point | 84 | 43° 30' 23" N | 122° 36' 03" W | 12 |
| Drop Point | 85 | 43° 30' 23" N | 122° 36' 03" W | 12 |
| Drop Point | 86 | 43° 30' 23" N | 122° 36' 03" W | 12 |
| Drop Point | 87 | 43° 30' 23" N | 122° 36' 03" W | 12 |
| Drop Point | 88 | 43° 30' 23" N | 122° 36' 03" W | 12 |
| Drop Point | 89 | 43° 30' 23" N | 122° 36' 03" W | 12 |
| Drop Point | 90 | 43° 30' 23" N | 122° 36' 03" W | 12 |
| Drop Point | 91 | 43° 30' 23" N | 122° 36' 03" W | 12 |
| Drop Point | 92 | 43° 30' 23" N | 122° 36' 03" W | 12 |
| Drop Point | 93 | 43° 30' 23" N | 122° 36' 03" W | 12 |
| Drop Point | 94 | 43° 30' 23" N | 122° 36' 03" W | 12 |
| Drop Point | 95 | 43° 30' 23" N | 122° 36' 03" W | 12 |
| Drop Point | 96 | 43° 30' 23" N | 122° 36' 03" W | 12 |
| Drop Point | 97 | 43° 30' 23" N | 122° 36' 03" W | 12 |
| Drop Point | 98 | 43° 30' 23" N | 122° 36' 03" W | 12 |
| Drop Point | 99 | 43° 30' 23" N | 122° 36' 03" W | 12 |
| Drop Point | 100 | 43° 30' 23" N | 122° 36' 03" W | 12 |

43° 51.5' W 122° 50.5' W 122° 49.5' W 122° 48.5' W 122° 47.5' W 122° 46.5' W 122° 45.5' W 122° 44.5' W 122° 43.51' W 122° 42.5' W 122° 41.5' W 122° 40.5' W 122° 39.5' W 122° 38.5' W 122° 37.5' W 122° 36.5' W 122° 35.5' W 122° 34.5' W 122° 33.5' W 122° 32.5' W 122° 31.5' W 122° 30.5' W 122° 29.5' W 122° 28.51' W 122° 27.5' W 122° 26.5' W 122° 25.5' W



122° 51.5' W 122° 50.5' W 122° 49.5' W 122° 48.5' W 122° 47.5' W 122° 46.5' W 122° 45.5' W 122° 44.5' W 122° 43.51' W 122° 42.5' W 122° 41.5' W 122° 40.5' W 122° 39.5' W 122° 38.5' W 122° 37.5' W 122° 36.5' W 122° 35.5' W 122° 34.5' W 122° 33.5' W 122° 32.5' W 122° 31.5' W 122° 30.5' W 122° 29.5' W 122° 28.51' W 122° 27.5' W 122° 26.5' W 122° 25.5' W