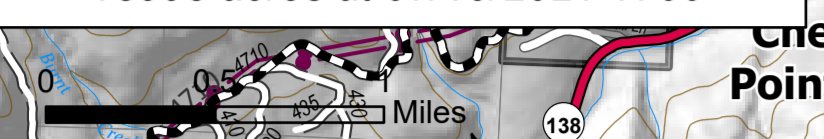


# Operations Map

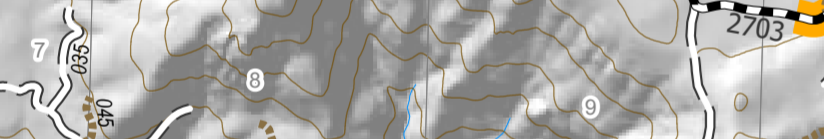
## Branch II

Jack  
OR-UPF-000265  
07/20/2021 - 24hr  
18993 acres at 07/19/2021 1700

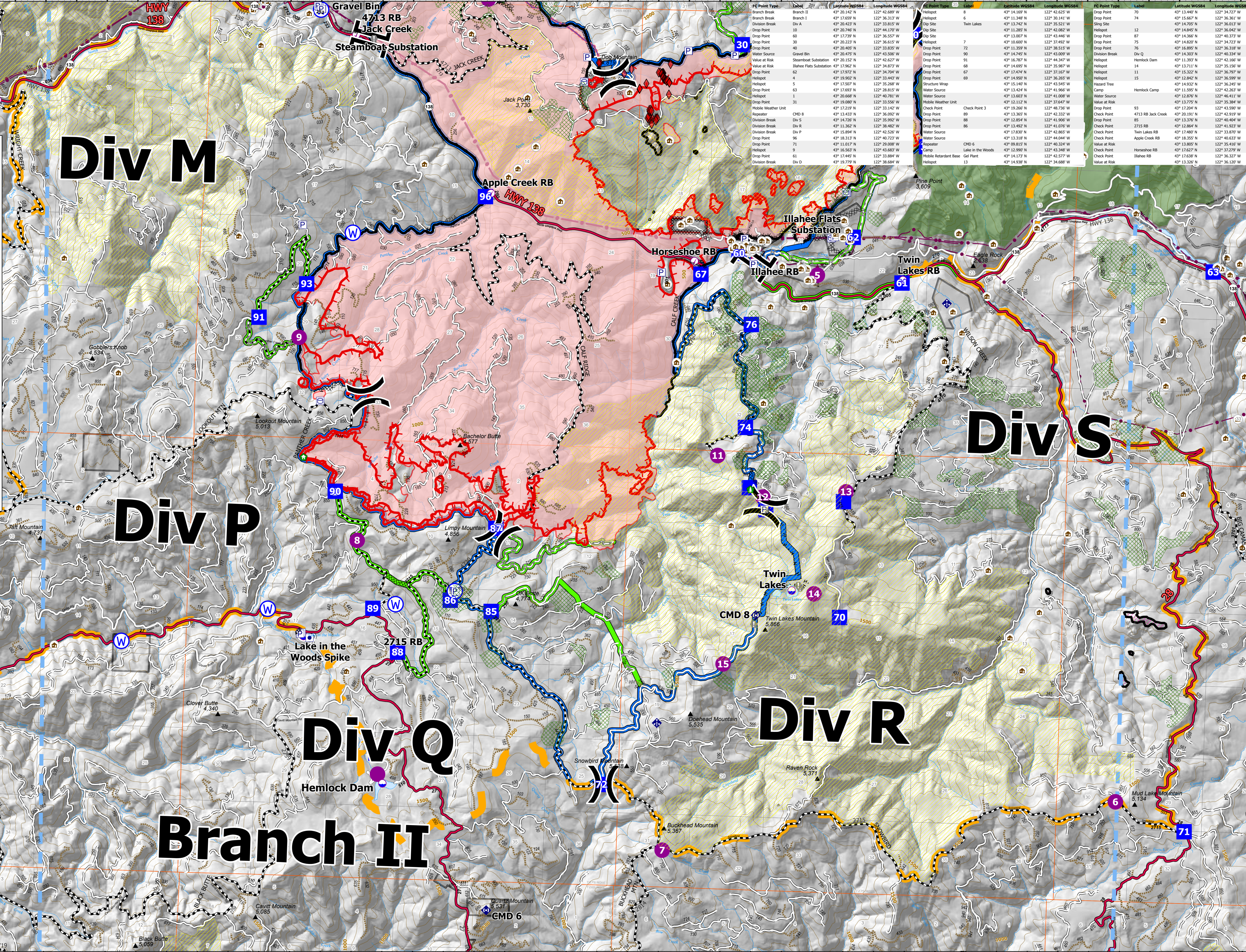
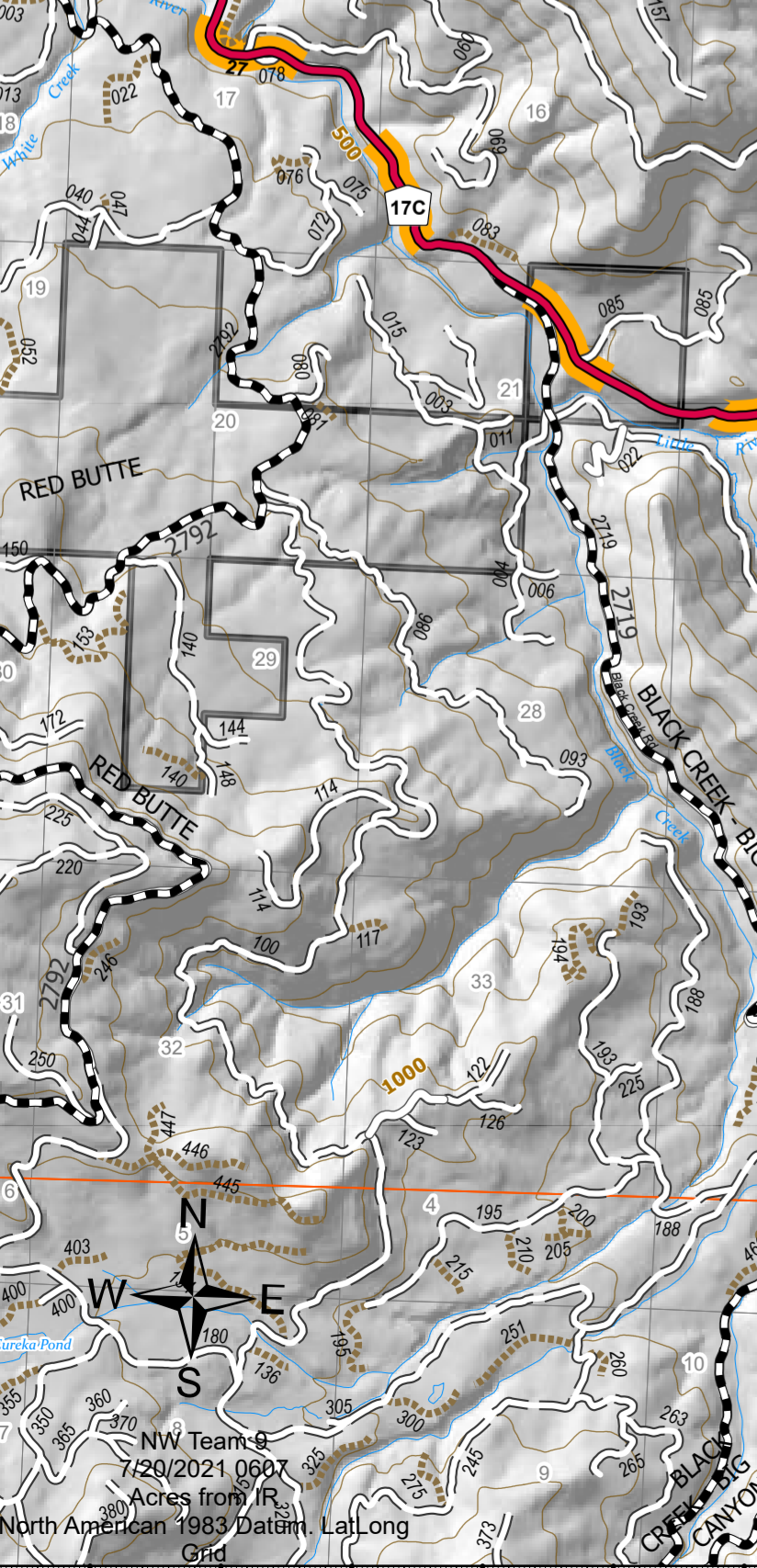


- Summit
- JackFireStructures\_pt
- ATP
- Other Property
- Pump
- Water Tank
- Check Point
- Dip Site
- Mobile Retardant Base
- Helispot
- Sling Site
- Division Break
- Branch Break
- Drop Point
- Camp
- Value at Risk
- Structure Wrap
- Hazard Tree
- Mobile Weather Unit
- Repeater
- Water Source
- Completed Dozer Line
- Completed Hand Line
- R - Completed Road as Line
- M - Planned Mixed Construction Line
- R - Planned Road as Line
- Retardant Drop
- Temporary Flight Restriction
- Fire Edge
- Contained Line
- Wildfire Daily Fire Perimeter

- Contours 100ft
- Area Closure
- Roadless Areas Inventoried
- Timber Sale
- Area to Protect (ATP)
- Land Ownership
- PV
- <all other values>
- Forest Service Land
- Wilderness
- Protracted Section
- Section
- Township
- HIFLD Roads
- Primary Highway
- Secondary Highway
- Paved Roads
- Dirt (Not Paved)
- Interstate Not Paved
- US Route Not Paved
- A - Arterial
- C - Collector
- Forest Service Roads
- Paved Road
- Gravel Road
- Dirt Roads
- Unimproved Roads
- Unspecified
- Closed Roads
- <all other values>
- NHDWaterbody
- Lake / Pond
- Lake / Pond (Intermittent)
- Reservoir
- NHDFlowline
- Stream/River



North American 1983 Datum, Laidong Grid



FC Point Type	Label	Latitude WGS84	Longitude WGS84
Branch Break	Branch II	43° 20.142' N	122° 42.689' W
Branch Break	Branch I	43° 17.699' N	122° 36.313' W
Division Break	Div A	43° 20.423' N	122° 38.842' W
Drop Point	10	43° 20.746' N	122° 44.170' W
Drop Point	60	43° 17.739' N	122° 35.557' W
Drop Point	30	43° 20.223' N	122° 36.613' W
Drop Point	40	43° 20.405' N	122° 33.556' W
Water Source	Gravel Bin	43° 20.475' N	122° 43.506' W
Value at Risk	Steamboat Substation	43° 20.152' N	122° 42.627' W
Value at Risk	Illahee Flats Substation	43° 17.962' N	122° 34.873' W
Drop Point	62	43° 17.972' N	122° 34.704' W
Drop Point	4	43° 18.902' N	122° 33.445' W
Helispot	5	43° 17.507' N	122° 35.268' W
Drop Point	63	43° 17.693' N	122° 28.815' W
Helispot	1	43° 20.668' N	122° 40.781' W
Drop Point	31	43° 18.082' N	122° 33.556' W
Mobile Weather Unit		43° 17.219' N	122° 33.142' W
Repeater	CHD 8	43° 13.433' N	122° 36.092' W
Division Break	Div S	43° 14.726' N	122° 35.992' W
Division Break	Div R	43° 11.322' N	122° 38.842' W
Division Break	Div P	43° 15.894' N	122° 42.526' W
Drop Point	96	43° 18.313' N	122° 40.723' W
Drop Point	71	43° 11.017' N	122° 29.008' W
Helispot	9	43° 15.563' N	122° 43.863' W
Drop Point	61	43° 17.445' N	122° 33.894' W
Division Break	Div D	43° 19.779' N	122° 38.684' W

FC Point Type	Label	Latitude WGS84	Longitude WGS84
Helispot	8	43° 14.169' N	122° 42.625' W
Helispot	6	43° 11.349' N	122° 30.341' W
Dip Site	Twin Lakes	43° 11.285' N	122° 36.321' W
Dip Site		43° 11.285' N	122° 42.082' W
Dip Site		43° 13.007' N	122° 43.446' W
Helispot	7	43° 10.600' N	122° 37.492' W
Drop Point	72	43° 13.359' N	122° 38.515' W
Drop Point	90	43° 14.745' N	122° 43.009' W
Drop Point	91	43° 16.787' N	122° 44.347' W
Drop Point	68	43° 14.695' N	122° 35.987' W
Drop Point	67	43° 17.474' N	122° 37.167' W
Drop Point	69	43° 14.959' N	122° 36.985' W
Structure Wrap		43° 15.140' N	122° 43.545' W
Water Source		43° 13.424' N	122° 41.566' W
Water Source		43° 13.603' N	122° 41.008' W
Mobile Weather Unit		43° 13.112' N	122° 37.647' W
Check Point	Check Point 3	43° 19.265' N	122° 48.736' W
Drop Point	89	43° 13.365' N	122° 42.332' W
Drop Point	88	43° 12.854' N	122° 41.506' W
Check Point	86	43° 13.922' N	122° 35.716' W
Water Source		43° 17.838' N	122° 42.865' W
Water Source		43° 13.318' N	122° 44.044' W
Repeater	CHD 6	43° 09.815' N	122° 40.324' W
Repeater	Lake in the Woods	43° 12.990' N	122° 43.348' W
Mobile Retardant Base	Get Plant	43° 14.137' N	122° 42.377' W
Helispot	13	43° 14.938' N	122° 34.688' W

FC Point Type	Label	Latitude WGS84	Longitude WGS84
Drop Point	70	43° 13.440' N	122° 34.727' W
Drop Point	74	43° 13.667' N	122° 36.361' W
Check Point	75	43° 14.292' N	122° 36.933' W
Helispot	12	43° 14.845' N	122° 36.042' W
Drop Point	87	43° 14.365' N	122° 40.373' W
Drop Point	75	43° 14.820' N	122° 34.723' W
Drop Point	76	43° 16.899' N	122° 36.318' W
Division Break	Div Q	43° 14.303' N	122° 40.334' W
Helispot	Helimock Dam	43° 11.393' N	122° 42.166' W
Helispot	14	43° 13.711' N	122° 35.150' W
Helispot	11	43° 15.322' N	122° 36.707' W
Helispot	15	43° 14.845' N	122° 36.999' W
Hazard Tree		43° 14.932' N	122° 36.245' W
Camp	Helimock Camp	43° 11.595' N	122° 42.263' W
Water Source		43° 12.876' N	122° 46.411' W
Value at Risk		43° 13.779' N	122° 35.384' W
Drop Point	93	43° 17.204' N	122° 43.990' W
Check Point	4713 RB Jack Creek	43° 20.191' N	122° 42.919' W
Drop Point	85	43° 13.370' N	122° 40.404' W
Check Point	2715 RB	43° 12.562' N	122° 41.933' W
Check Point	Twin Lakes RB	43° 17.480' N	122° 33.870' W
Check Point	Apple Creek RB	43° 18.355' N	122° 40.633' W
Value at Risk		43° 13.805' N	122° 35.416' W
Check Point	Horseshoe RB	43° 17.627' N	122° 37.279' W
Check Point	Illahee RB	43° 17.638' N	122° 36.127' W
Value at Risk		43° 13.326' N	122° 36.120' W