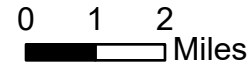


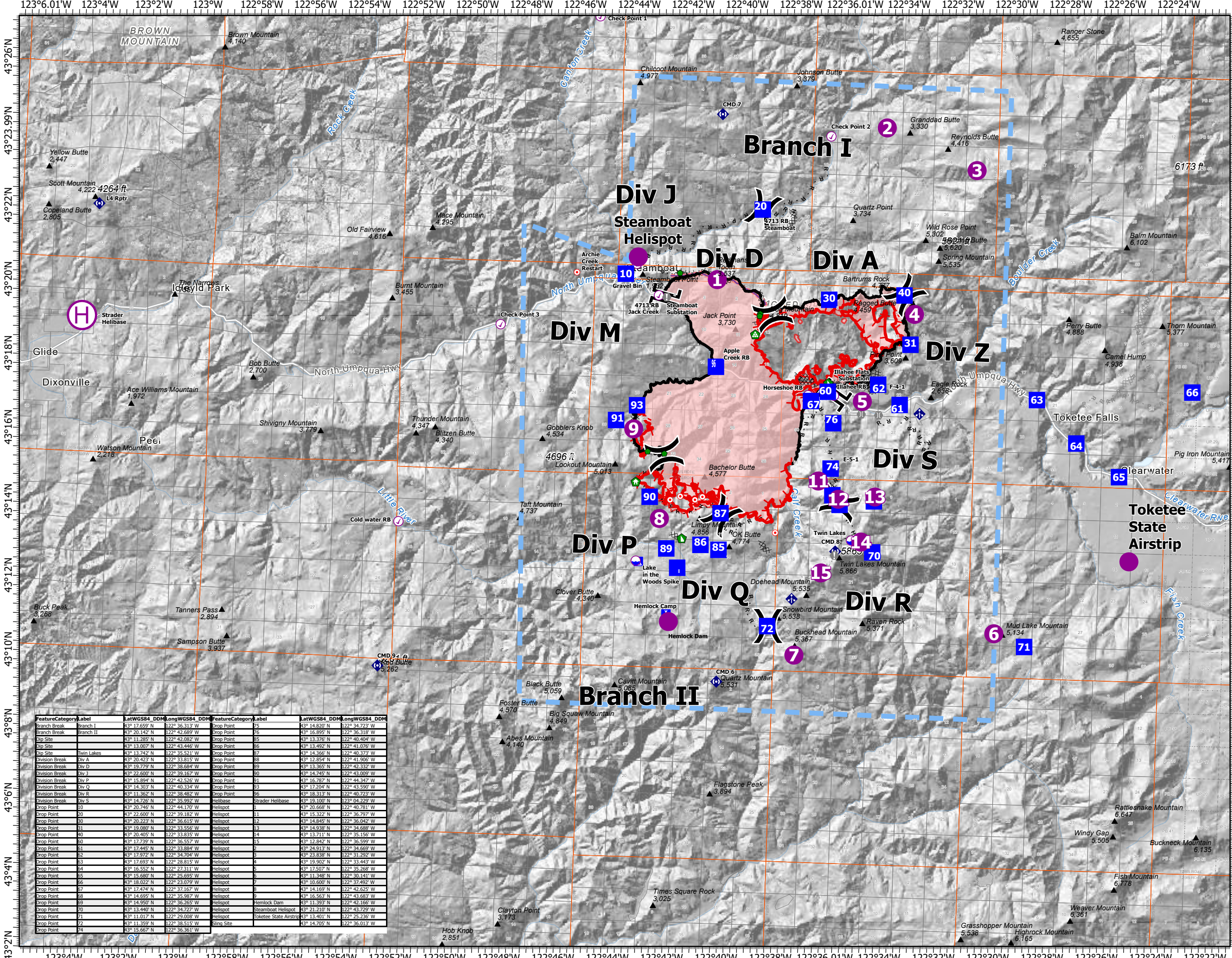
Pilots Map

Jack
OR-UPF-000265
07/20/2021 - 24hr

18039 acres at 07/18/2021 2200



- Wildfire Daily Fire Perimeter
- X Completed Dozer Line
- H Completed Hand Line
- R Completed Road as Line
- X Planned Dozer Line
- M Planned Mixed Construction Line
- R Planned Road as Line
- Other
- Retardant Drop
- Temporary Flight Restriction
- Fire Edge
- Contained Line
- Helispot
- Dip Site
- Drop Point
- Sling Site
- Check Point
- Mobile Retardant Base
- Helibase
- X Division Break
- | Branch Break
- | Incident Command Post
- | Camp
- Hot Spot - Spot Fire
- Value at Risk
- Other
- Bridge
- Structure Wrap
- Repair Point
- Landing or Log Deck
- Hazard Tree
- Dozer Push
- Mobile Weather Unit
- Repeater



FeatureCategory	Label	LatWGS84_DDM	LongWGS84_DDM	FeatureCategory	Label	LatWGS84_DDM	LongWGS84_DDM
Branch Break	Branch I	43° 17.659' N	122° 36.313' W	Drop Point	75	43° 14.820' N	122° 34.723' W
Branch Break	Branch II	43° 20.142' N	122° 42.689' W	Drop Point	76	43° 16.895' N	122° 36.318' W
Dip Site		43° 11.285' N	122° 42.082' W	Drop Point	85	43° 13.376' N	122° 40.404' W
Dip Site		43° 13.007' N	122° 43.446' W	Drop Point	86	43° 13.492' N	122° 41.076' W
Dip Site	Twin Lakes	43° 13.742' N	122° 35.521' W	Drop Point	87	43° 14.366' N	122° 40.373' W
Division Break	Div A	43° 20.423' N	122° 33.815' W	Drop Point	88	43° 12.854' N	122° 41.906' W
Division Break	Div D	43° 19.775' N	122° 38.684' W	Drop Point	29	43° 13.365' N	122° 42.332' W
Division Break	Div J	43° 22.600' N	122° 39.167' W	Drop Point	20	43° 14.245' N	122° 43.009' W
Division Break	Div P	43° 15.894' N	122° 42.526' W	Drop Point	31	43° 16.787' N	122° 44.347' W
Division Break	Div Q	43° 14.303' N	122° 40.334' W	Drop Point	93	43° 17.204' N	122° 43.590' W
Division Break	Div R	43° 11.362' N	122° 38.482' W	Drop Point	96	43° 18.313' N	122° 40.723' W
Division Break	Div S	43° 14.726' N	122° 35.992' W	Helibase	Strader Helibase	43° 19.100' N	122° 04.229' W
Drop Point	10	43° 20.746' N	122° 44.170' W	Helispot	1	43° 20.668' N	122° 40.781' W
Drop Point	20	43° 22.600' N	122° 39.167' W	Helispot	11	43° 15.322' N	122° 36.797' W
Drop Point	30	43° 20.223' N	122° 36.615' W	Helispot	12	43° 14.945' N	122° 36.042' W
Drop Point	31	43° 19.080' N	122° 33.556' W	Helispot	13	43° 14.938' N	122° 34.688' W
Drop Point	40	43° 20.405' N	122° 33.835' W	Helispot	14	43° 13.711' N	122° 35.156' W
Drop Point	50	43° 17.739' N	122° 36.557' W	Helispot	15	43° 12.842' N	122° 36.599' W
Drop Point	51	43° 17.445' N	122° 33.884' W	Helispot	2	43° 24.913' N	122° 34.669' W
Drop Point	52	43° 17.972' N	122° 34.704' W	Helispot	3	43° 23.836' N	122° 31.292' W
Drop Point	53	43° 17.693' N	122° 28.815' W	Helispot	4	43° 19.902' N	122° 33.443' W
Drop Point	54	43° 16.552' N	122° 27.311' W	Helispot	5	43° 17.507' N	122° 35.268' W
Drop Point	55	43° 15.689' N	122° 29.699' W	Helispot	6	43° 11.348' N	122° 30.141' W
Drop Point	56	43° 18.022' N	122° 33.079' W	Helispot	7	43° 10.600' N	122° 37.492' W
Drop Point	57	43° 17.474' N	122° 37.167' W	Helispot	8	43° 14.169' N	122° 42.625' W
Drop Point	58	43° 14.695' N	122° 35.987' W	Helispot	9	43° 16.563' N	122° 43.683' W
Drop Point	59	43° 14.950' N	122° 36.265' W	Helispot	Helmock Dam	43° 11.393' N	122° 42.166' W
Drop Point	60	43° 13.440' N	122° 34.727' W	Helispot	Steamboat Helispot	43° 21.210' N	122° 43.729' W
Drop Point	61	43° 11.017' N	122° 29.008' W	Helispot	Tokete State Airstrip	43° 13.401' N	122° 25.236' W
Drop Point	62	43° 11.359' N	122° 38.515' W	Sling Site		43° 14.705' N	122° 36.013' W
Drop Point	63	43° 15.667' N	122° 36.361' W				



NW Team 9
7/19/2021 2054
Acres from IR
North American 1983 Datum. LatLong Grid