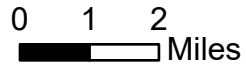


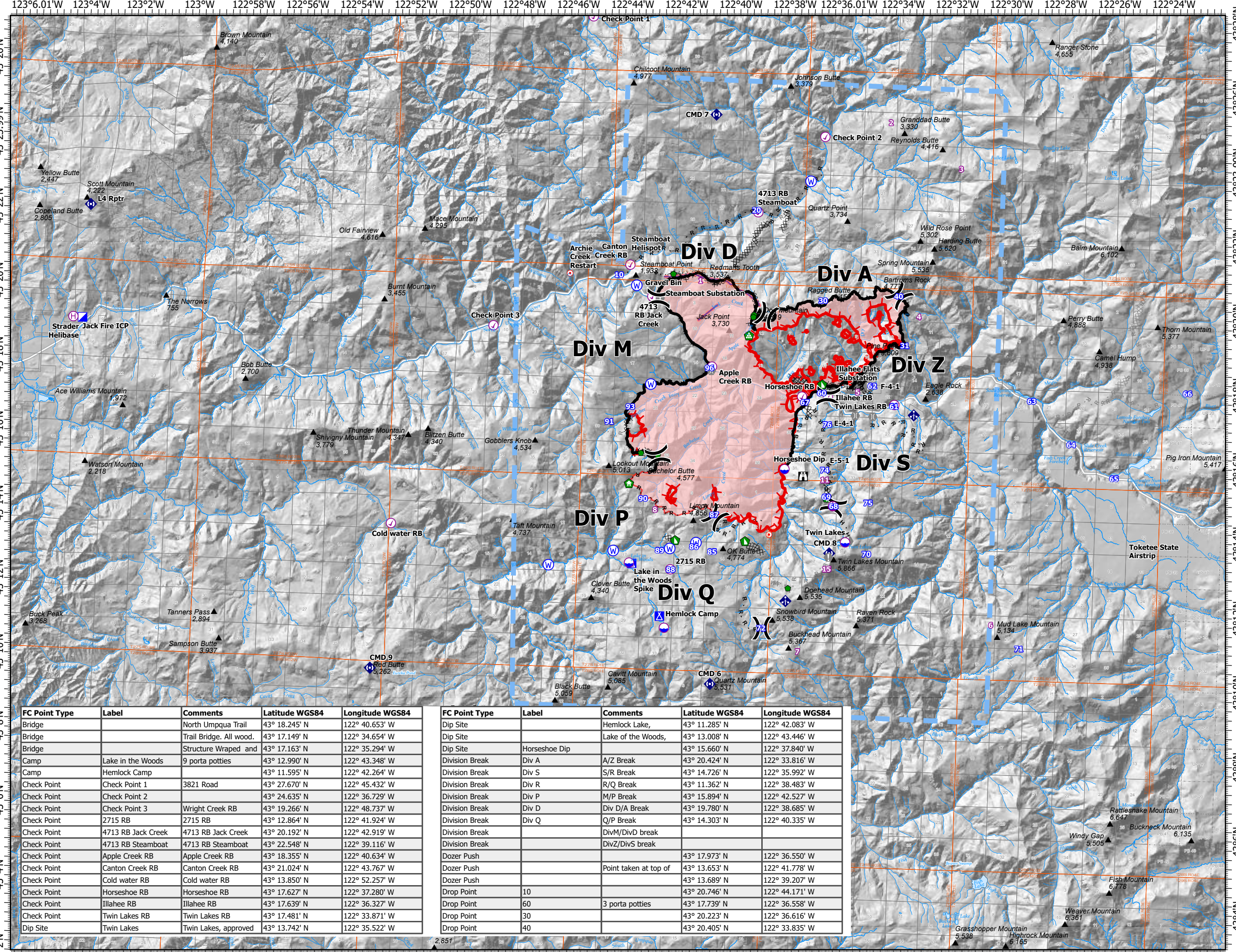
Pilots Map

Jack Fire
OR-UPF-000265
07/22/2021 - 24hr

19,352 acres at 07/20/2021 1745



- Wildfire Daily Fire Perimeter
 - X Completed Dozer Line
 - H Completed Hand Line
 - R Completed Road as Line
 - X Planned Dozer Line
 - M Planned Mixed Construction Line
 - R Planned Road as Line
 - Other
 - Retardant Drop
 - Temporary Flight Restriction
 - Fire Edge
 - Contained Line
 - Check Point
 - Dip Site
 - Helispot
 - Helibase
 - Sling Site
 - Division Break
- Incident Command Post
 - Drop Point
 - Camp
 - Lookout
 - Hot Spot - Spot Fire
 - Value at Risk
 - Other
 - Bridge
 - Structure Wrap
 - Repair Point
 - Landing or Log Deck
 - Hazard Tree
 - Dozer Push
 - Mobile Weather Unit
 - Repeater
 - Water Source
 - Label Point



FC Point Type	Label	Comments	Latitude WGS84	Longitude WGS84
Bridge		North Umpqua Trail	43° 18.245' N	122° 40.653' W
Bridge		Trail Bridge. All wood.	43° 17.149' N	122° 34.654' W
Bridge		Structure Wrapped and	43° 17.163' N	122° 35.294' W
Camp	Lake in the Woods	9 porta potties	43° 12.990' N	122° 43.348' W
Camp	Hemlock Camp		43° 11.595' N	122° 42.264' W
Check Point	Check Point 1	3821 Road	43° 27.670' N	122° 45.432' W
Check Point	Check Point 2		43° 24.635' N	122° 36.729' W
Check Point	Check Point 3	Wright Creek RB	43° 19.266' N	122° 48.737' W
Check Point	2715 RB	2715 RB	43° 12.864' N	122° 41.924' W
Check Point	4713 RB Jack Creek	4713 RB Jack Creek	43° 20.192' N	122° 42.919' W
Check Point	4713 RB Steamboat	4713 RB Steamboat	43° 22.548' N	122° 39.116' W
Check Point	Apple Creek RB	Apple Creek RB	43° 18.355' N	122° 40.634' W
Check Point	Canton Creek RB	Canton Creek RB	43° 21.024' N	122° 43.767' W
Check Point	Cold water RB	Cold water RB	43° 13.850' N	122° 52.257' W
Check Point	Horseshoe RB	Horseshoe RB	43° 17.627' N	122° 37.280' W
Check Point	Illahee RB	Illahee RB	43° 17.639' N	122° 36.327' W
Check Point	Twin Lakes RB	Twin Lakes RB	43° 17.481' N	122° 33.871' W
Dip Site	Twin Lakes	Twin Lakes, approved	43° 13.742' N	122° 35.522' W

FC Point Type	Label	Comments	Latitude WGS84	Longitude WGS84
Dip Site		Hemlock Lake,	43° 11.285' N	122° 42.083' W
Dip Site		Lake of the Woods,	43° 13.008' N	122° 43.446' W
Dip Site	Horseshoe Dip		43° 15.660' N	122° 37.840' W
Division Break	Div A	A/Z Break	43° 20.424' N	122° 33.816' W
Division Break	Div S	S/R Break	43° 14.726' N	122° 35.992' W
Division Break	Div R	R/Q Break	43° 11.362' N	122° 38.483' W
Division Break	Div P	M/P Break	43° 15.894' N	122° 42.527' W
Division Break	Div D	Div D/A Break	43° 19.780' N	122° 38.685' W
Division Break	Div Q	Q/P Break	43° 14.303' N	122° 40.335' W
Division Break		DivM/DivD break		
Division Break		DivZ/DivS break		
Dozer Push			43° 17.973' N	122° 36.550' W
Dozer Push		Point taken at top of	43° 13.653' N	122° 41.778' W
Dozer Push			43° 13.689' N	122° 39.207' W
Drop Point	10		43° 20.746' N	122° 44.171' W
Drop Point	60	3 porta potties	43° 17.739' N	122° 36.558' W
Drop Point	30		43° 20.223' N	122° 36.616' W
Drop Point	40		43° 20.405' N	122° 33.835' W



NW Team 10
7/21/2021 2030
Acres from IR
North American 1983 Datum. LatLong Grid