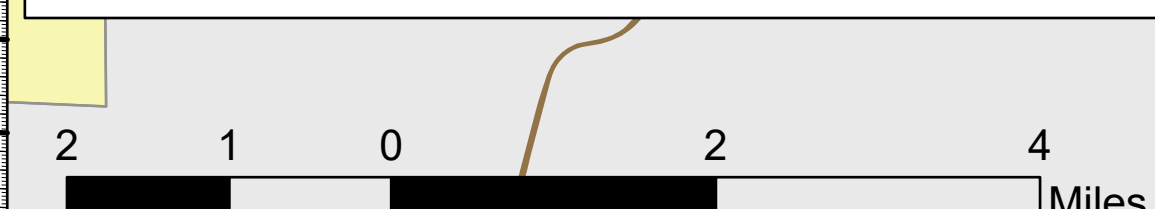


Transportation Map

Jack Fire
OR-UPF-000265
07/22/2021 - 24hr

19,352 acres at 07/20/2021 1745

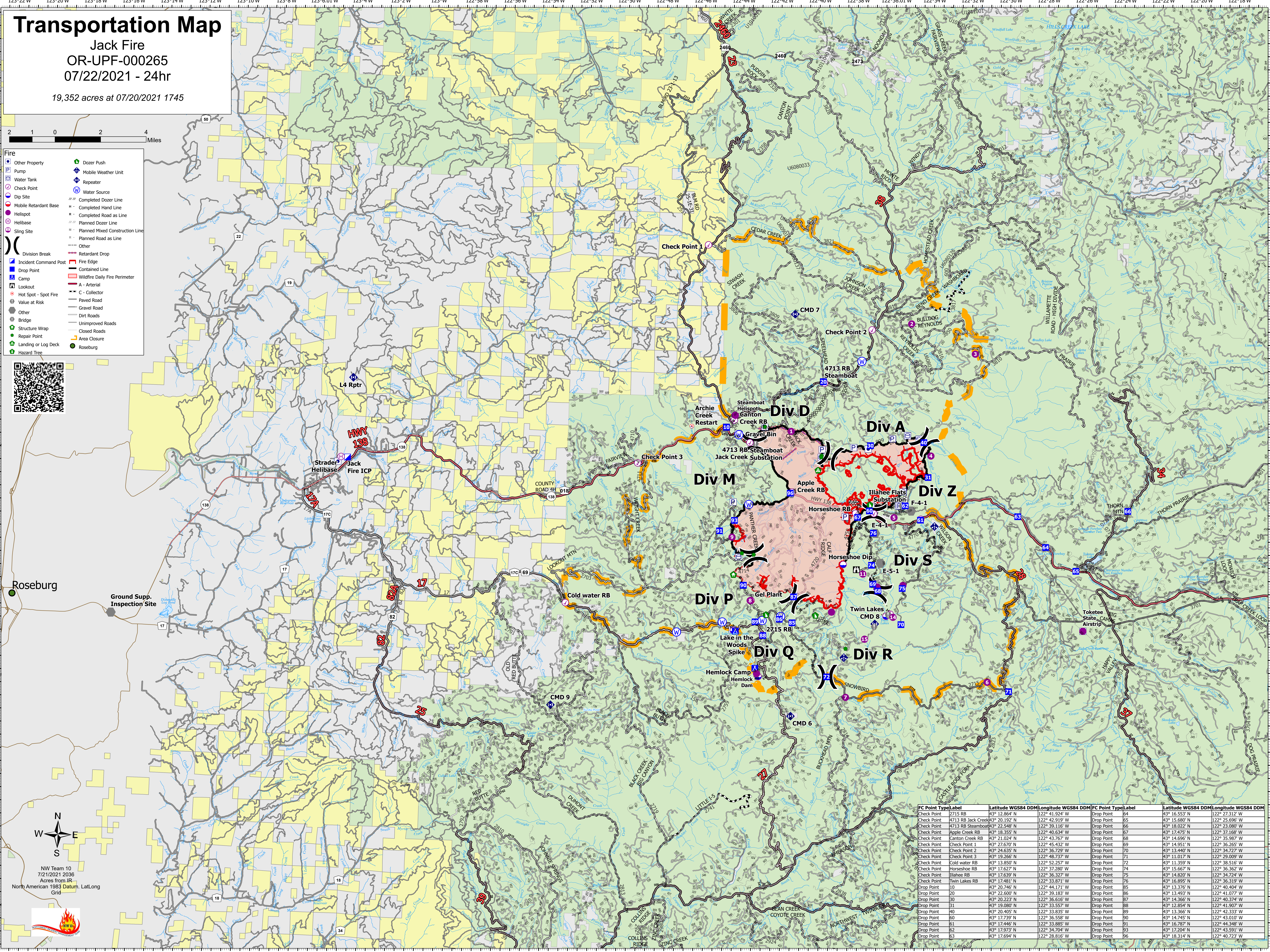


- Fire**
 - Other Property
 - Pump
 - Water Tank
 - Check Point
 - Dip Site
 - Mobile Retardant Base
 - Helispot
 - Helibase
 - Sling Site
 - Division Break
 - Incident Command Post
 - Drop Point
 - Camp
 - Lookout
 - Hot Spot - Spot Fire
 - Value at Risk
 - Other
 - Structure Wrap
 - Repair Point
 - Landing or Log Deck
 - Hazard Tree
- Other**
 - Dozer Push
 - Mobile Weather Unit
 - Repeater
 - Water Source
 - Completed Dozer Line
 - Completed Hand Line
 - Completed Road as Line
 - Planned Dozer Line
 - Planned Mixed Construction Line
 - Planned Road as Line
 - Other
 - Retardant Drop
 - Fire Edge
 - Contained Line
 - Wildfire Daily Fire Perimeter
 - A - Arterial
 - C - Collector
 - Paved Road
 - Gravel Road
 - Dirt Roads
 - Unimproved Roads
 - Closed Roads
 - Area Closure
 - Roseburg



Roseburg
Ground Supp. Inspection Site

N
W E
S
NW Team 10
7/21/2021 2036
Acres from IR
North American 1983 Datum, LatLong
Grid



FC Point Type	Label	Latitude WGS84 DDM	Longitude WGS84 DDM	FC Point Type	Label	Latitude WGS84 DDM	Longitude WGS84 DDM
Check Point	2715 RB	43° 12.864' N	122° 41.924' W	Drop Point	64	43° 16.553' N	122° 27.312' W
Check Point	4713 RB Jack Creek	43° 20.192' N	122° 42.919' W	Drop Point	65	43° 15.680' N	122° 25.696' W
Check Point	4713 RB Steamboat	43° 22.548' N	122° 39.116' W	Drop Point	66	43° 18.022' N	122° 23.080' W
Check Point	Apple Creek RB	43° 18.355' N	122° 40.634' W	Drop Point	67	43° 17.475' N	122° 37.168' W
Check Point	Canton Creek RB	43° 21.024' N	122° 43.767' W	Drop Point	68	43° 14.696' N	122° 35.987' W
Check Point	Check Point 1	43° 27.670' N	122° 45.432' W	Drop Point	69	43° 14.951' N	122° 36.265' W
Check Point	Check Point 2	43° 24.635' N	122° 36.729' W	Drop Point	70	43° 13.440' N	122° 34.727' W
Check Point	Check Point 3	43° 19.266' N	122° 48.737' W	Drop Point	71	43° 11.017' N	122° 29.009' W
Check Point	Cold water RB	43° 13.850' N	122° 52.257' W	Drop Point	72	43° 11.359' N	122° 38.516' W
Check Point	Horseshoe RB	43° 17.627' N	122° 37.280' W	Drop Point	74	43° 15.667' N	122° 36.362' W
Check Point	Illahoe RB	43° 17.639' N	122° 36.327' W	Drop Point	75	43° 14.820' N	122° 34.724' W
Check Point	Twin Lakes RB	43° 17.481' N	122° 33.871' W	Drop Point	76	43° 16.895' N	122° 36.319' W
Drop Point	10	43° 20.746' N	122° 44.171' W	Drop Point	85	43° 13.376' N	122° 41.404' W
Drop Point	20	43° 22.600' N	122° 39.183' W	Drop Point	86	43° 13.493' N	122° 41.077' W
Drop Point	30	43° 20.223' N	122° 36.616' W	Drop Point	87	43° 14.366' N	122° 40.374' W
Drop Point	31	43° 19.080' N	122° 33.557' W	Drop Point	88	43° 12.854' N	122° 41.907' W
Drop Point	40	43° 20.405' N	122° 33.833' W	Drop Point	89	43° 13.366' N	122° 42.333' W
Drop Point	60	43° 17.739' N	122° 36.558' W	Drop Point	90	43° 14.745' N	122° 43.010' W
Drop Point	61	43° 17.446' N	122° 33.885' W	Drop Point	91	43° 16.787' N	122° 44.348' W
Drop Point	62	43° 17.973' N	122° 34.704' W	Drop Point	93	43° 17.204' N	122° 43.591' W
Drop Point	63	43° 17.694' N	122° 28.816' W	Drop Point	96	43° 18.314' N	122° 40.723' W