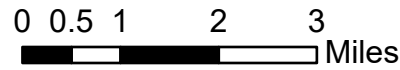


IAP Map

Jack Fire
OR-UPF-000265

19,658 acres at 07/21/2021 2152

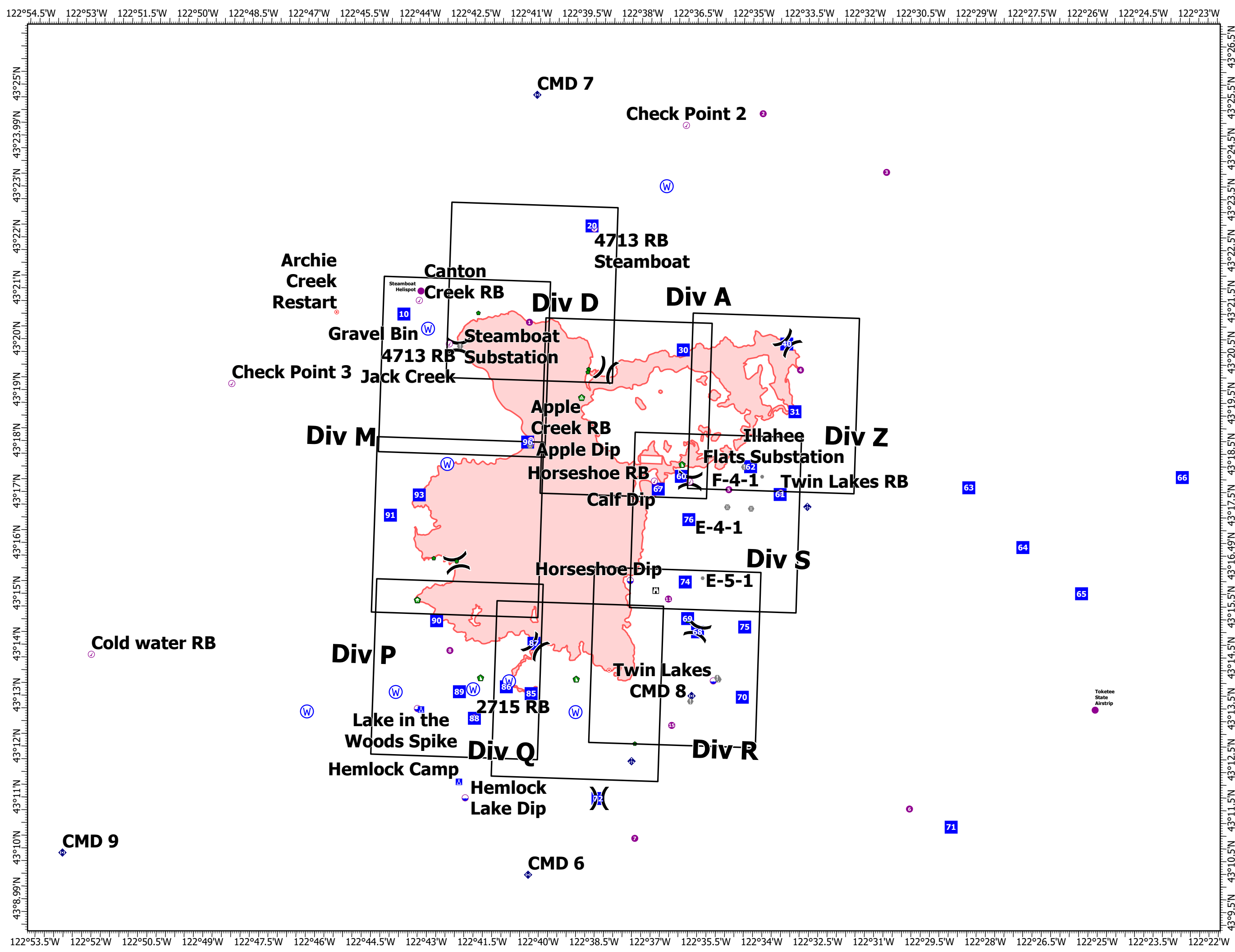


Temperature:	87°
Relative Humidity:	21%
Wind Direction:	NW
Wind Speed:	4-6 mph Gust 15



7/22/2021 2031

North American 1983 Datum. LatLong Grid

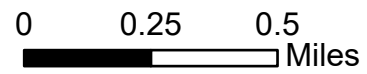


IAP Map

Jack Fire
OR-UPF-000265

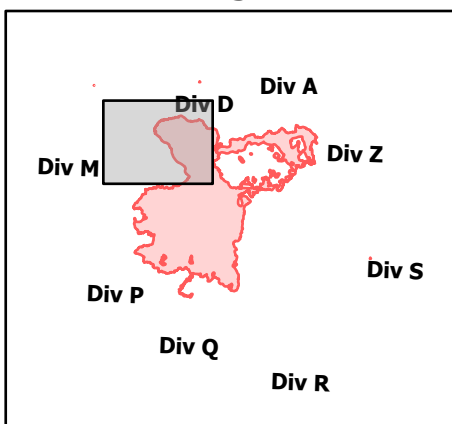
07/23/2021 - 24hr

19,658 acres at 07/21/2021 2152



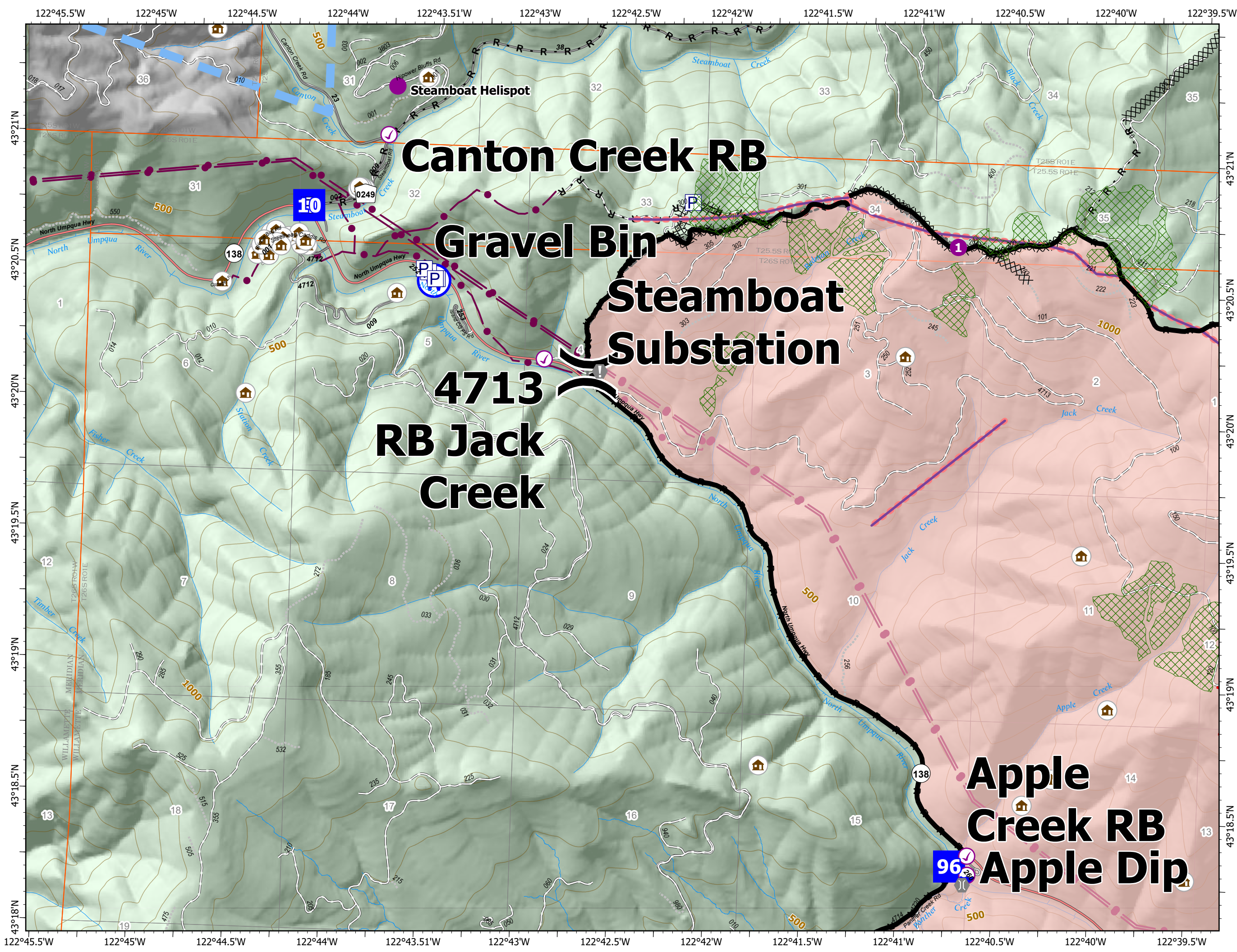
- Check Point
- Dip Site
- Helispot
- Division Break
- Drop Point
- Value at Risk
- Bridge
- Repair Point
- Landing or Log Deck
- Water Source
- Completed Dozer Line
- Completed Hand Line
- Completed Road as Line
- Other
- Retardant Drop
- Temporary Flight Restriction
- Fire Edge
- Contained Line
- Other
- Prescribed Fire
- Wildfire Daily Fire Perimeter
- Utility Power Lines
- JackFireStructures_pt
- Timber Sale
- Wilderness
- ATP
- Area to Protect (ATP)

Page Number: 1



7/22/2021 2026

North American 1983 Datum. LatLong Grid



Canton Creek RB

Gravel Bin

Steamboat Substation

4713 RB Jack Creek

Apple Creek RB

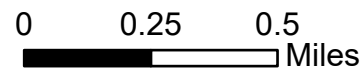
Apple Dip

IAP Map

Jack Fire
OR-UPF-000265

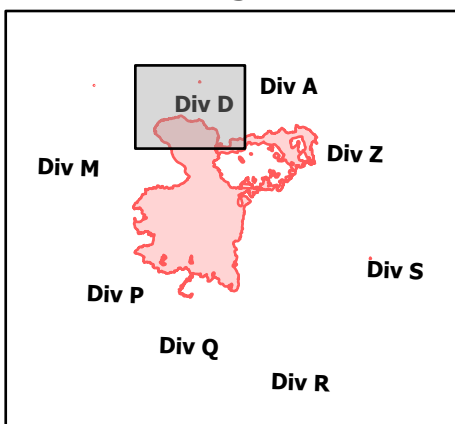
07/23/2021 - 24hr

19,658 acres at 07/21/2021 2152



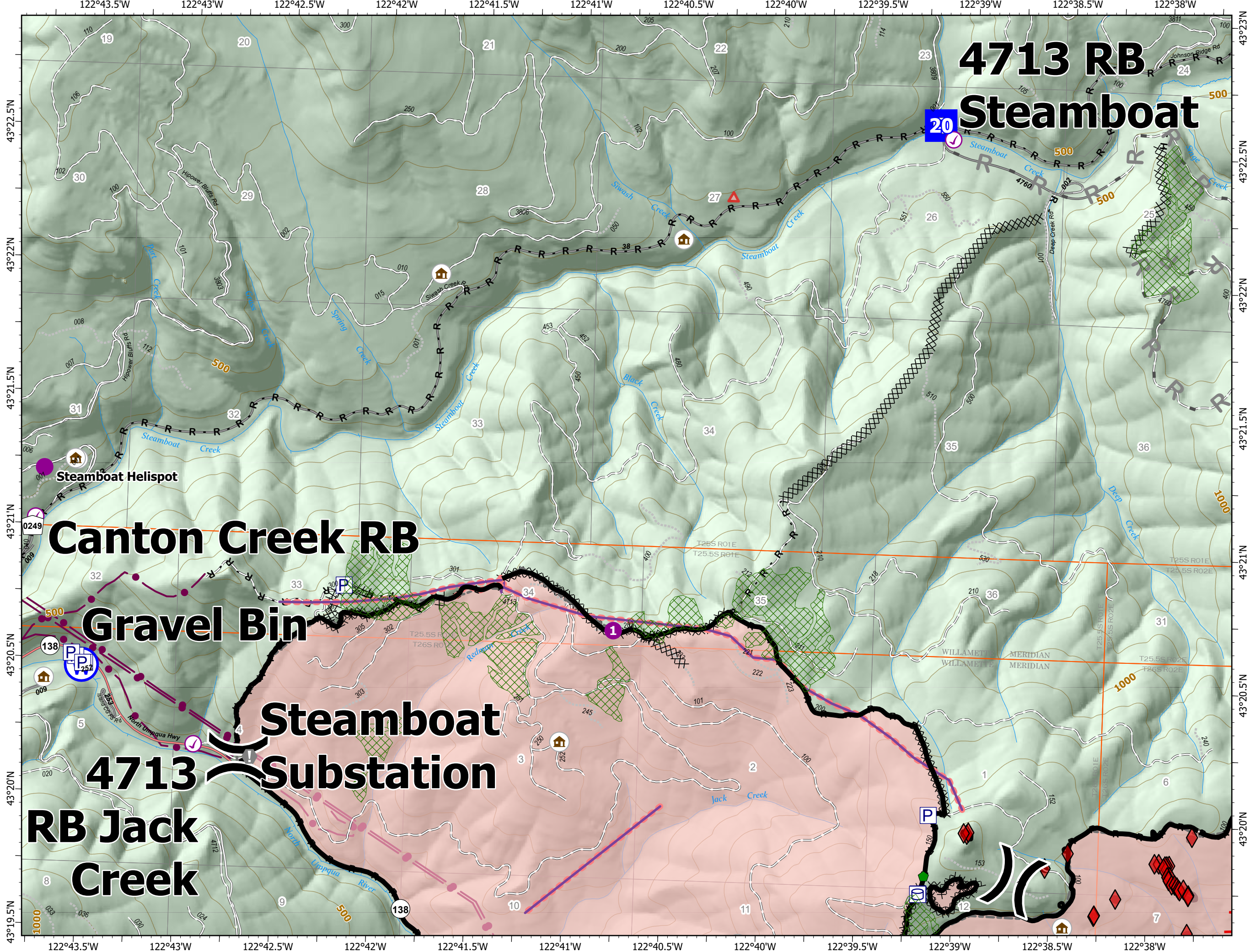
- ✓ Check Point
- Helispot
-) (Division Break
- Drop Point
- ⚠ Value at Risk
- ◆ Repair Point
- Ⓜ Water Source
- ⓧⓧ Completed Dozer Line
- H - Completed Hand Line
- R - Completed Road as Line
- R Planned Road as Line
- Other
- ▬ Retardant Drop
- ▬ Fire Edge
- ▬ Contained Line
- ▬ Other
- ▬ Prescribed Fire
- ▬ Wildfire Daily Fire Perimeter
- Utility Power Lines
- 🏠 JackFireStructures_pt
- ▨ Timber Sale
- ▨ Wilderness
- ◆ ATP
- ▨ Area to Protect (ATP)

Page Number: 2



7/22/2021 2026

North American 1983 Datum. LatLong Grid



4713 RB Steamboat

Canton Creek RB

Gravel Bin

Steamboat Substation

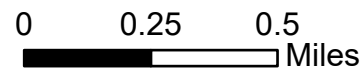
4713 RB Jack Creek

IAP Map

Jack Fire
OR-UPF-000265

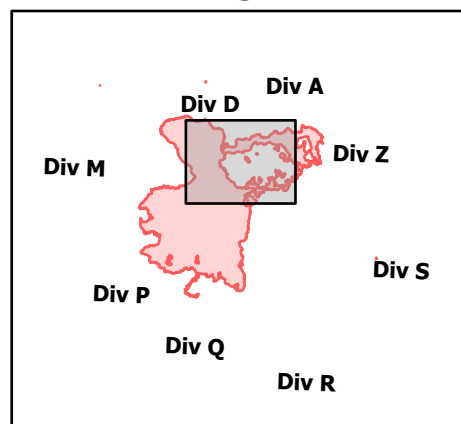
07/23/2021 - 24hr

19,658 acres at 07/21/2021 2152



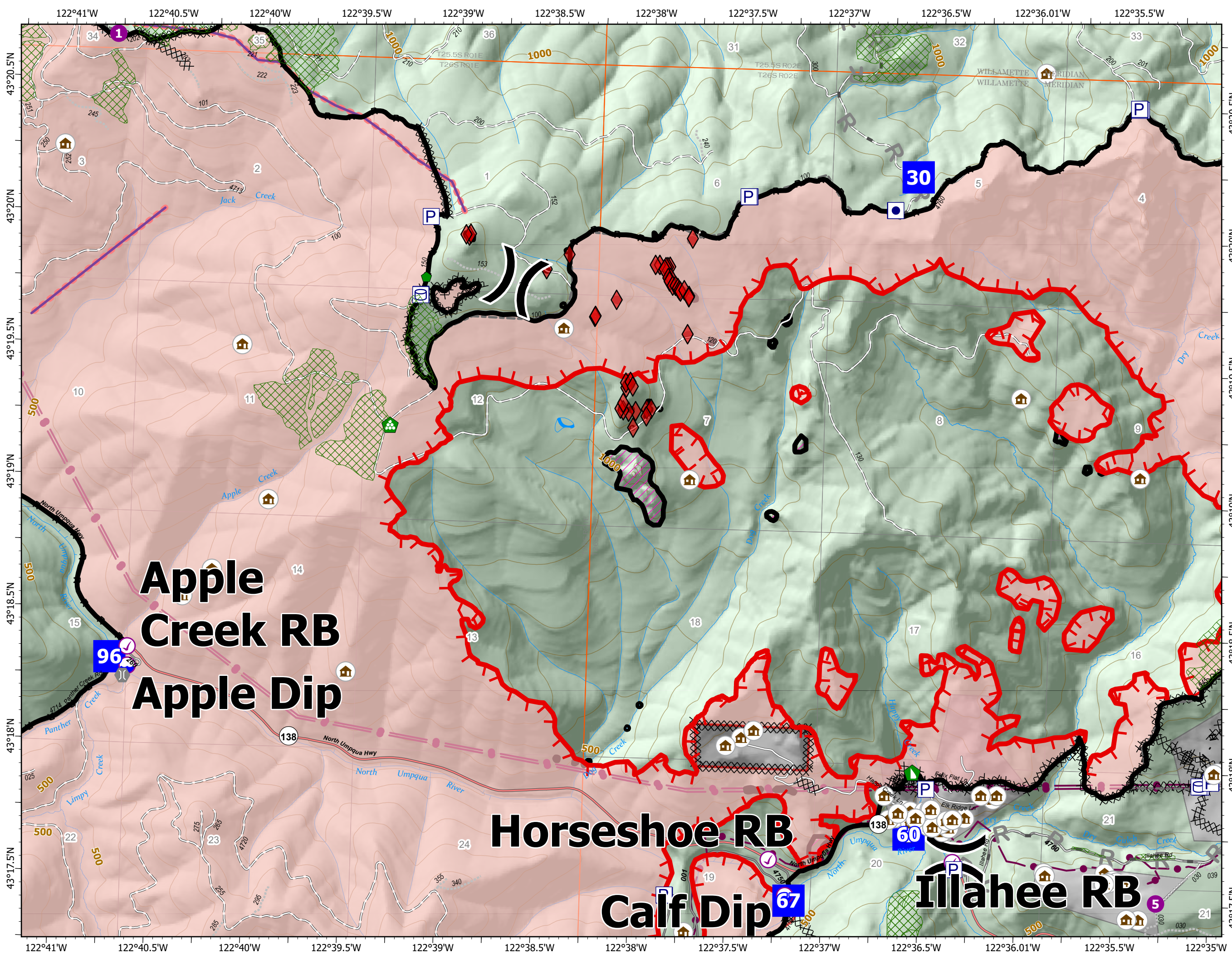
- Check Point
- Dip Site
- Helispot
-) (Division Break
- Drop Point
- ⚠ Value at Risk
- ⚙ Bridge
- 🌲 Repair Point
- 🏠 Landing or Log Deck
- 🚧 Dozer Push
- ⌘ Completed Dozer Line
- H Completed Hand Line
- R Completed Road as Line
- R Planned Road as Line
- Other
- 🚰 Retardant Drop
- 🔥 Fire Edge
- ▭ Contained Line
- ▭ Other
- 🔥 Prescribed Fire
- 🔥 Wildfire Daily Fire Perimeter
- ⚡ Utility Power Lines
- 🏠 JackFireStructures_pt
- 🌲 Timber Sale
- 🌲 Wilderness
- ⬠ ATP
- ▭ Area to Protect (ATP)

Page Number: 3



7/22/2021 2026

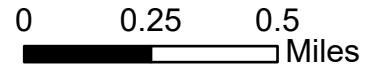
North American 1983 Datum. LatLong Grid



IAP Map

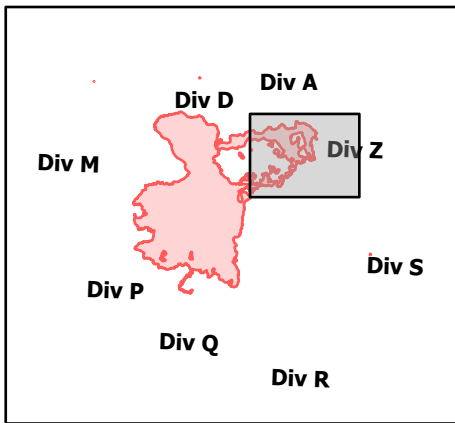
Jack Fire
OR-UPF-000265
07/23/2021 - 24hr

19,658 acres at 07/21/2021 2152



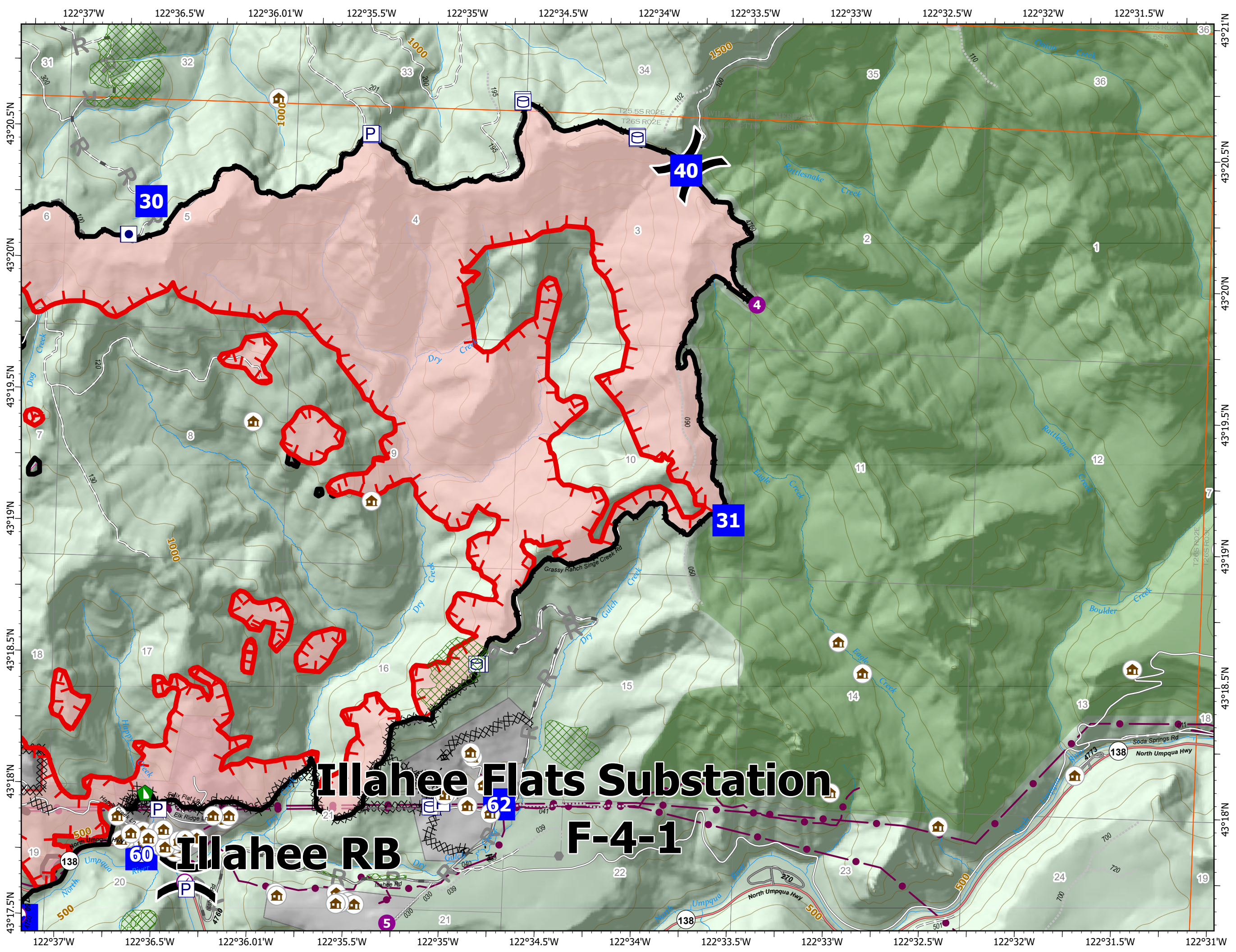
- ✓ Check Point
- ⊙ Dip Site
- ⊙ Helispot
-) (Division Break
- Drop Point
- ⚠ Value at Risk
- ⬢ Other
- 🚧 Dozer Push
- ⌘⌘ Completed Dozer Line
- H - Completed Hand Line
- R - Completed Road as Line
- R Planned Road as Line
- Other
- 🔴 Fire Edge
- ⬛ Contained Line
- ⬜ Other
- 🟡 Prescribed Fire
- 🔴 Wildfire Daily Fire Perimeter
- ⚡ Utility Power Lines
- 🏠 JackFireStructures_pt
- 🌲 Timber Sale
- 🌿 Wilderness
- ⬠ ATP
- 🛡️ Area to Protect (ATP)

Page Number: 4



7/22/2021 2026

North American 1983 Datum. LatLong Grid



Illahee Flats Substation

Illahee RB

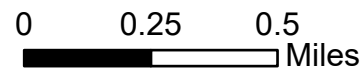
F-4-1

IAP Map

Jack Fire
OR-UPF-000265

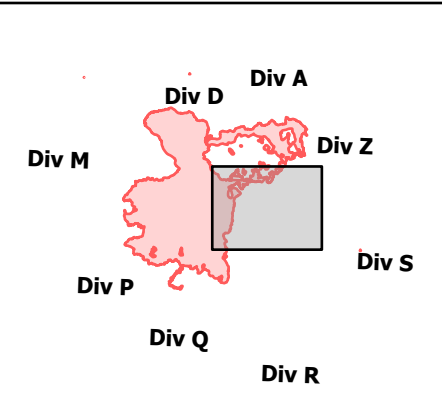
07/23/2021 - 24hr

19,658 acres at 07/21/2021 2152



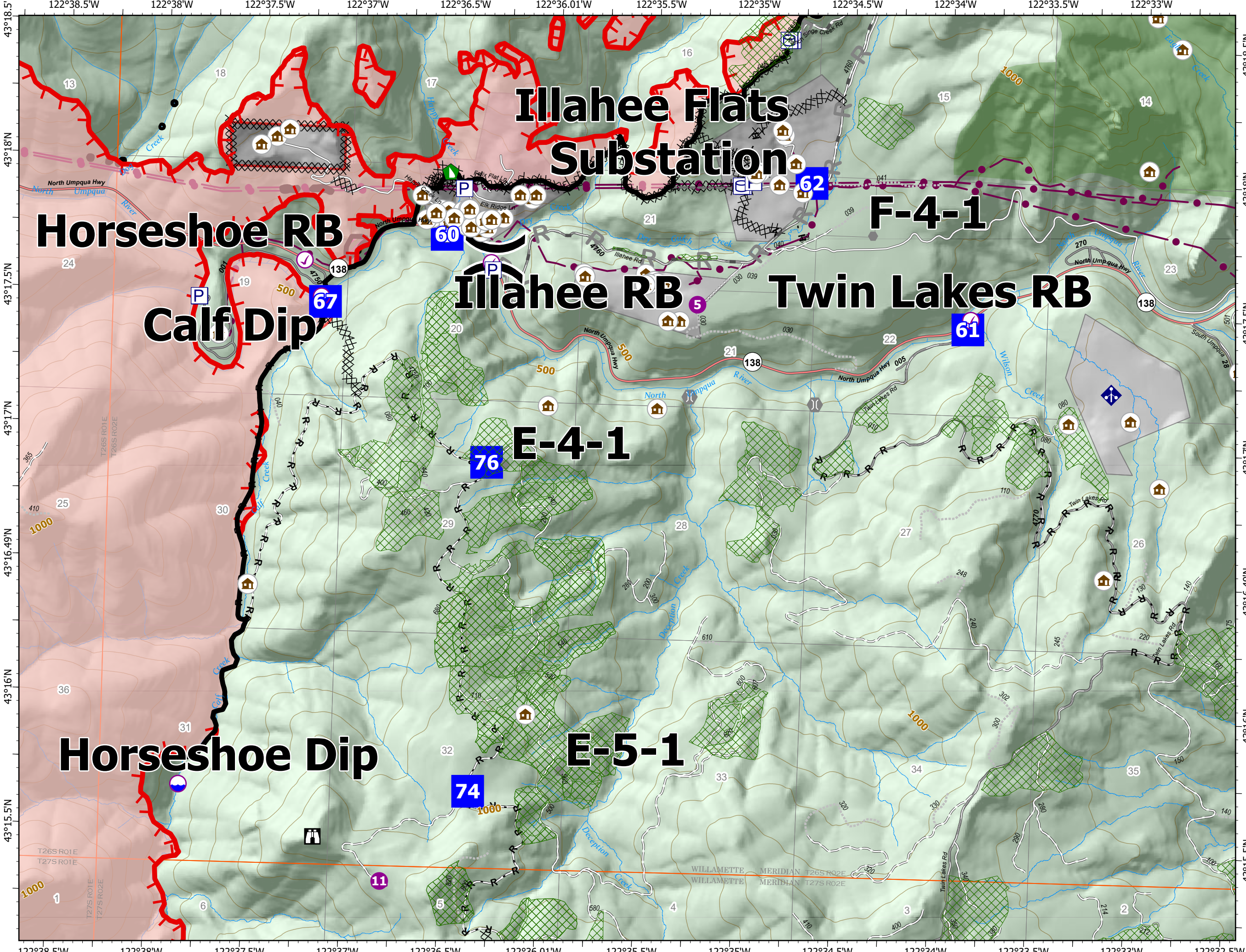
- Check Point
- Dip Site
- Helispot
-) (Division Break
- Drop Point
- ⚠ Lookout
- ⚠ Value at Risk
- Other
- ⚙ Bridge
- 🚧 Dozer Push
- 📶 Mobile Weather Unit
- ⌘ Completed Dozer Line
- H - Completed Hand Line
- R - Completed Road as Line
- R Planned Road as Line
- Other
- 🔴 Fire Edge
- ⬛ Contained Line
- ⬜ Other
- 🟡 Prescribed Fire
- 🔴 Wildfire Daily Fire Perimeter
- 🟡 Utility Power Lines
- 🏠 JackFireStructures_pt
- 🌲 Timber Sale
- 🌲 Wilderness
- ⚠ ATP
- 🛡 Area to Protect (ATP)

Page Number: 5



7/22/2021 2026

North American 1983 Datum. LatLong Grid

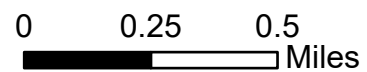


IAP Map

Jack Fire
OR-UPF-000265

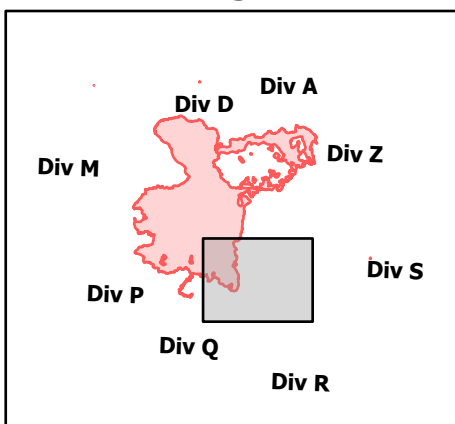
07/23/2021 - 24hr

19,658 acres at 07/21/2021 2152



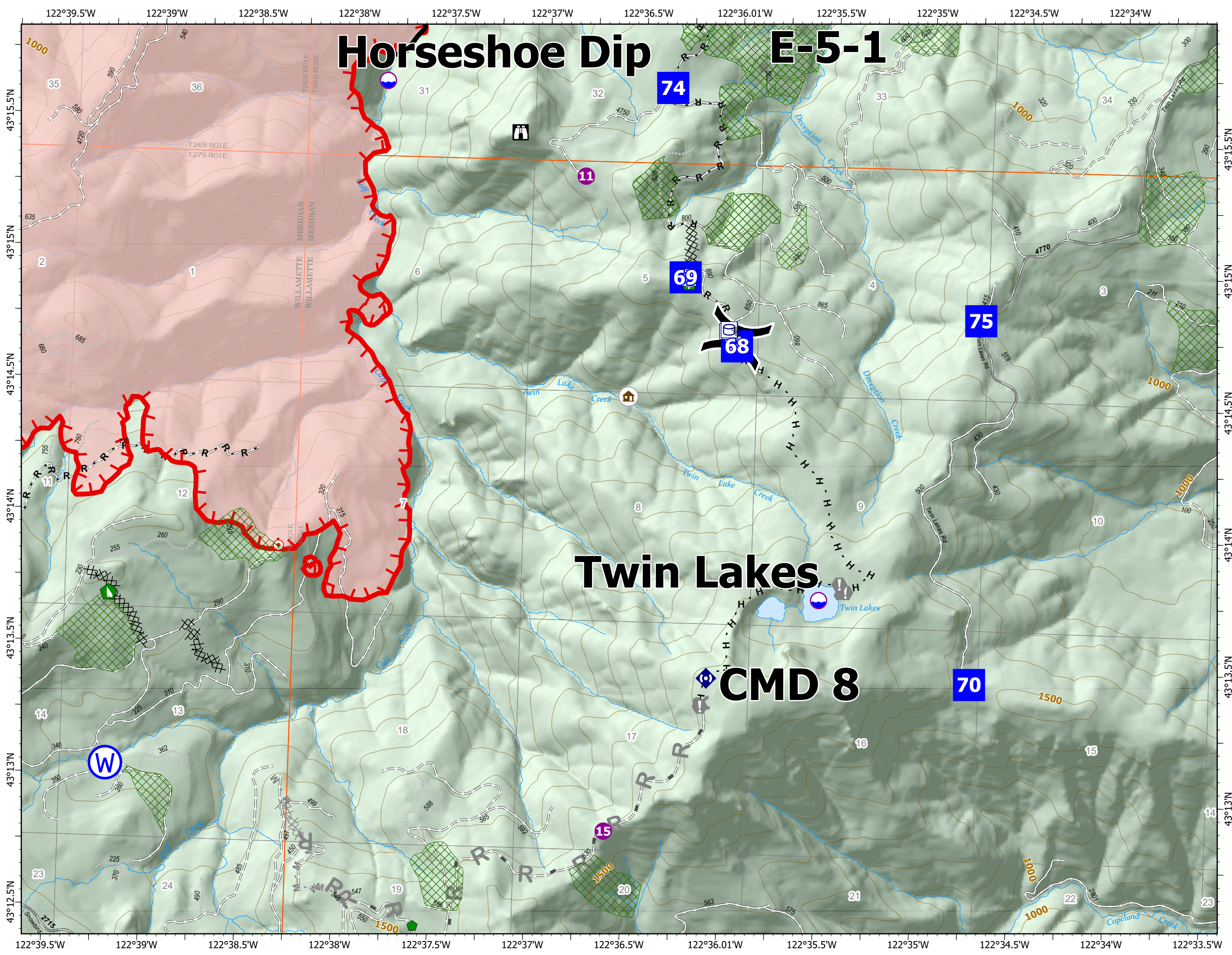
- Dip Site
- Helispot
- Sling Site
- Division Break
- Drop Point
- Lookout
- Hot Spot - Spot Fire
- Value at Risk
- Other
- Repair Point
- Hazard Tree
- Dozer Push
- Repeater
- Water Source
- Completed Dozer Line
- Completed Hand Line
- Completed Road as Line
- Planned Dozer Line
- Planned Mixed Construction Line
- Planned Road as Line
- Fire Edge
- Contained Line
- Other
- Prescribed Fire
- Wildfire Daily Fire Perimeter
- Utility Power Lines
- JackFireStructures_pt
- Timber Sale
- Wilderness
- ATP
- Area to Protect (ATP)

Page Number: 6



7/22/2021 2026

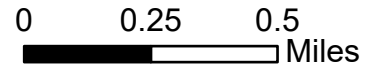
North American 1983 Datum. LatLong Grid



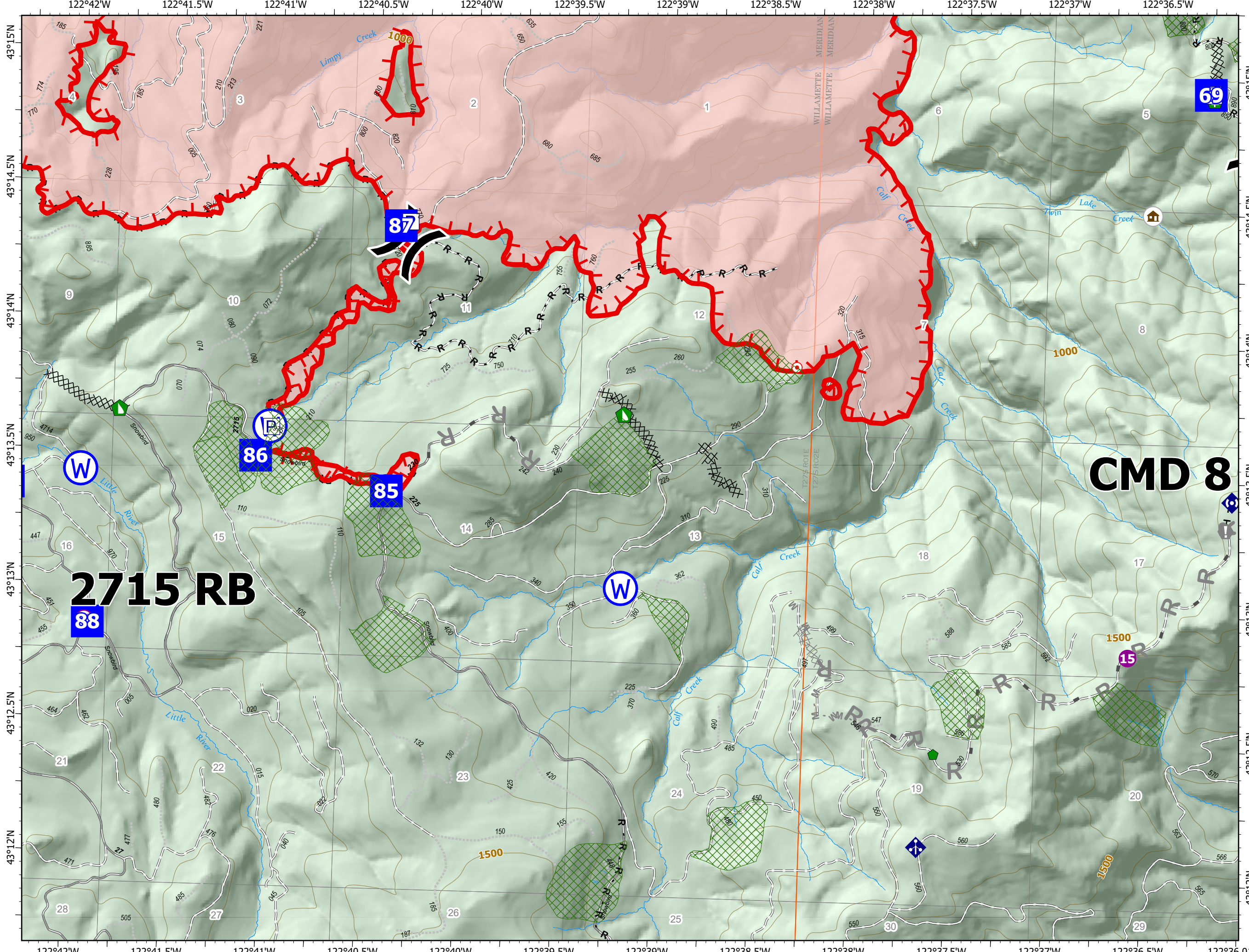
IAP Map

Jack Fire
OR-UPF-000265
07/23/2021 - 24hr

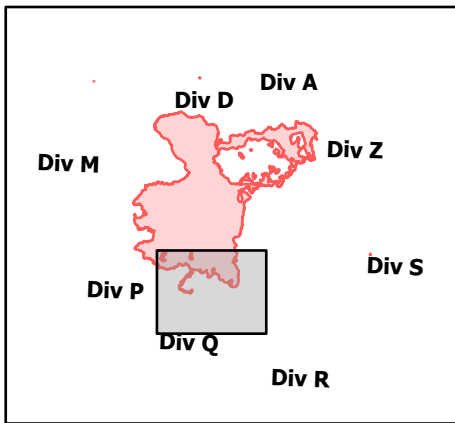
19,658 acres at 07/21/2021 2152



- Check Point
- Helispot
- Sling Site
- Division Break
- Drop Point
- Camp
- Hot Spot - Spot Fire
- Value at Risk
- Repair Point
- Hazard Tree
- Dozer Push
- Mobile Weather Unit
- Repeater
- Water Source
- Completed Dozer Line
- Completed Hand Line
- Completed Road as Line
- Planned Dozer Line
- Planned Mixed Construction Line
- Planned Road as Line
- Fire Edge
- Other
- Prescribed Fire
- Wildfire Daily Fire Perimeter
- Utility Power Lines
- JackFireStructures_pt
- Timber Sale
- Wilderness
- ATP
- Area to Protect (ATP)



Page Number: 7



7/22/2021 2026

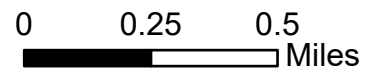
North American 1983 Datum. LatLong Grid

IAP Map

Jack Fire
OR-UPF-000265

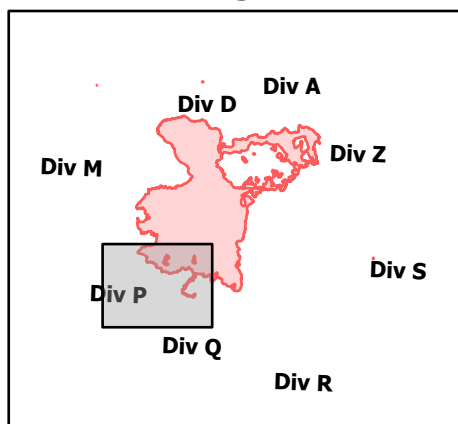
07/23/2021 - 24hr

19,658 acres at 07/21/2021 2152



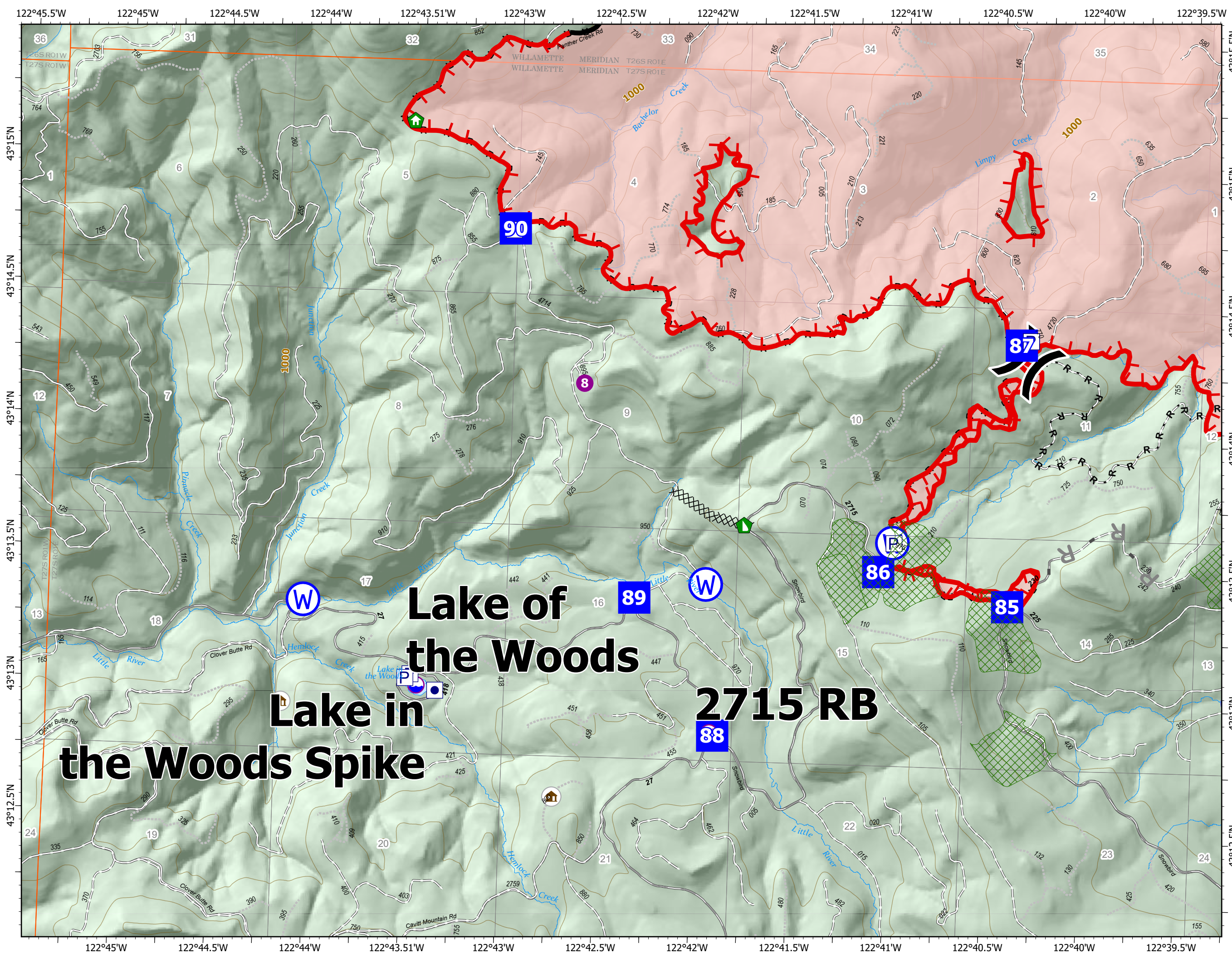
- ✓ Check Point
- ⊙ Dip Site
- Helispot
-) Division Break
- Drop Point
- ⚓ Camp
- 🏠 Structure Wrap
- 🏠 Dozer Push
- ⊙ Water Source
- ⊗ Completed Dozer Line
- R - Completed Road as Line
- R Planned Road as Line
- 🔴 Fire Edge
- ▬ Contained Line
- ▬ Other
- 🟡 Prescribed Fire
- 🔴 Wildfire Daily Fire Perimeter
- ⚡ Utility Power Lines
- 🏠 JackFireStructures_pt
- 🌲 Timber Sale
- 🌲 Wilderness
- ⬠ ATP
- 🔴 Area to Protect (ATP)

Page Number: 8



7/22/2021 2026

North American 1983 Datum. LatLong Grid

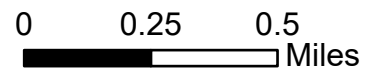


IAP Map

Jack Fire
OR-UPF-000265

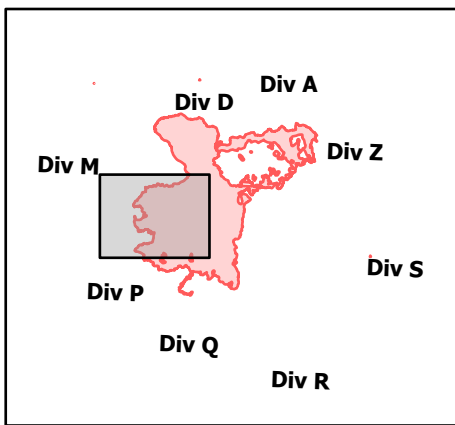
07/23/2021 - 24hr

19,658 acres at 07/21/2021 2152



- ✓ Check Point
- ⊙ Dip Site
-) (Division Break
- Drop Point
- ⚙ Bridge
- 🏠 Structure Wrap
- 🏠 Repair Point
- ⊙ Water Source
- ⊗ ⊗ Completed Dozer Line
- H - Completed Hand Line
- R - Completed Road as Line
- R Planned Road as Line
- 🔴 Fire Edge
- ▬ Contained Line
- ▬ Other
- 🟡 Prescribed Fire
- 🔴 Wildfire Daily Fire Perimeter
- ⚡ Utility Power Lines
- 🏠 JackFireStructures_pt
- 🌲 Timber Sale
- 🌲 Wilderness
- 📍 ATP
- 🔴 Area to Protect (ATP)

Page Number: 9



7/22/2021 2027

North American 1983 Datum. LatLong Grid

