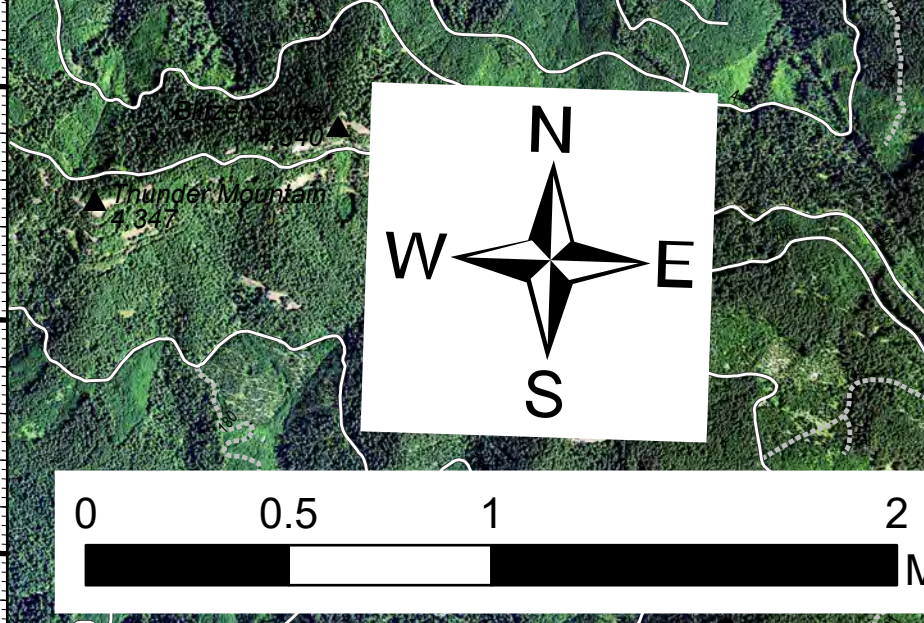


# Operations Map

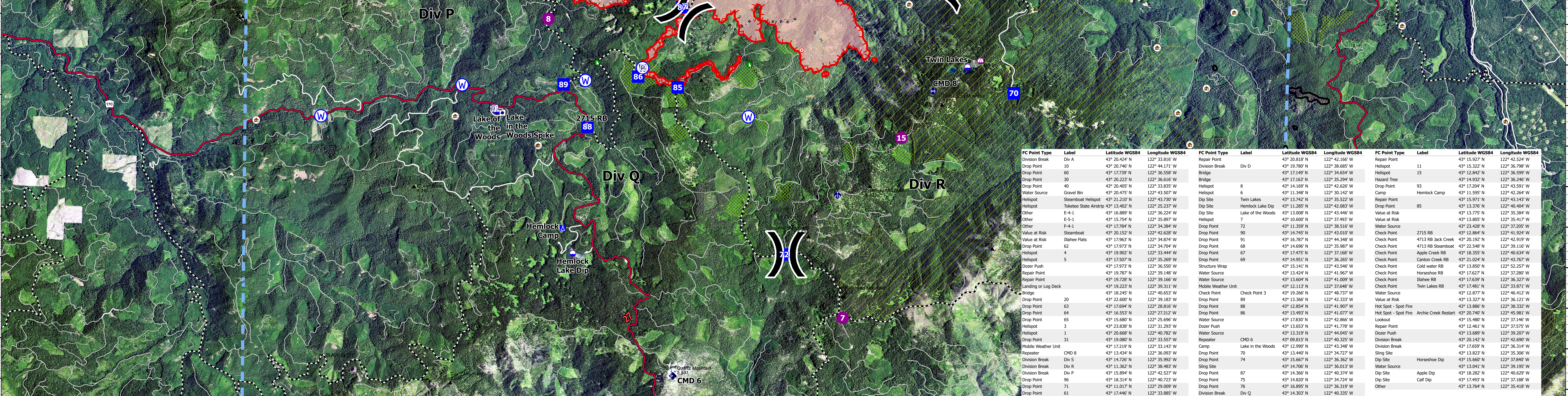
Jack Fire  
 OR-UPF-000265  
 07/23/2021 - 24hr  
 19,956 acres at 07/22/2021 2109

- Summit
- JackFireStructures\_pt
- ATP
- Other Property
- Pump
- Water Tank
- Check Point
- Dip Site
- Helicopter
- Sling Site
- Division Break
- Drop Point
- Camp
- Lookout
- Hot Spot - Spot Fire
- Value at Risk
- Other
- Bridge
- Structure Wrap
- Repair Point
- Landing or Log Deck
- Hazard Tree
- Dozer Push
- Mobile Weather Unit
- Repeater
- Water Source
- Completed Dozer Line
- Completed Hand Line
- Completed Road as Line
- Planned Dozer Line
- Planned Mixed Construction Line
- Planned Road as Line
- Retardant Drop
- Temporary Flight Restriction
- Fire Edge
- Contained Line
- Wildfire Daily Fire Perimeter
- Utility Power Lines
- Roadless Areas Inventoried
- Call Units
- CC Alternative\_Final Units
- Dry Units
- JackFinalUnits
- Area to Protect (ATP)
- Wilderness

- ### Forest Service Roads
- Paved Road
  - Gravel Road
  - Dirt Road
  - Unimproved Roads
  - Closed Roads
  - all other values
- ### HIFLID Roads
- Primary Highway
  - Secondary Highway
  - Paved Roads
  - Dirt (Not Paved)
  - Interstate Not Paved
  - US Route Not Paved
  - A - Arterial
  - C - Collector



NW Team 10  
 7/23/2021 0644  
 Acres from IR  
 North American 1983 Datum, Lat/Long  
 Grid



FC Point Type	Label	Latitude WGS84	Longitude WGS84	FC Point Type	Label	Latitude WGS84	Longitude WGS84			
Division Break	Div A	43° 20.24' N	122° 33.81' W	Repeater	CMD 6	43° 13.31' N	122° 40.45' W			
Drop Point	10	43° 20.74' N	122° 44.17' W	Repeater	CMD 6	43° 12.99' N	122° 43.34' W			
Drop Point	60	43° 17.73' N	122° 36.58' W	Drop Point	70	43° 13.44' N	122° 36.03' W			
Drop Point	30	43° 20.23' N	122° 36.61' W	Drop Point	74	43° 15.67' N	122° 36.36' W			
Drop Point	40	43° 20.40' N	122° 33.83' W	Drop Point	75	43° 14.70' N	122° 36.07' W			
Water Source	Gravel Bin	43° 20.47' N	122° 43.50' W	Drop Point	77	43° 14.36' N	122° 40.37' W			
Helicopter	Steamboat Helispot	43° 21.21' N	122° 43.70' W	Drop Point	75	43° 14.36' N	122° 40.37' W			
Helicopter	Tribble State Airstrip	43° 13.40' N	122° 25.23' W	Drop Point	71	43° 11.07' N	122° 29.02' W			
Other	E-4-1	43° 16.89' N	122° 36.24' W	Drop Point	61	43° 17.46' N	122° 33.88' W			
Other	E-5-1	43° 15.75' N	122° 35.89' W	Drop Point	61	43° 17.46' N	122° 33.88' W			
Other	F-4-1	43° 17.74' N	122° 34.44' W	Drop Point	61	43° 17.46' N	122° 33.88' W			
Value at Risk	Steamboat	43° 20.52' N	122° 42.02' W	Drop Point	61	43° 17.46' N	122° 33.88' W			
Value at Risk	Ilahaee Flats	43° 17.63' N	122° 34.74' W	Drop Point	61	43° 17.46' N	122° 33.88' W			
Drop Point	62	43° 17.97' N	122° 34.70' W	Drop Point	61	43° 17.46' N	122° 33.88' W			
Drop Point	4	43° 19.90' N	122° 33.44' W	Drop Point	61	43° 17.46' N	122° 33.88' W			
Drop Point	5	43° 17.57' N	122° 35.20' W	Drop Point	61	43° 17.46' N	122° 33.88' W			
Dozer Push	43° 17.97' N	122° 36.50' W	Structure Wrap	43° 15.41' N	122° 41.54' W	Check Point	43° 15.48' N	122° 37.14' W		
Repair Point	43° 19.78' N	122° 39.14' W	Water Source	43° 13.64' N	122° 41.00' W	Check Point	43° 15.48' N	122° 37.14' W		
Repair Point	43° 19.78' N	122° 39.14' W	Mobile Weather Unit	43° 12.11' N	122° 37.66' W	Check Point	43° 15.48' N	122° 37.14' W		
Landing or Log Deck	43° 18.24' N	122° 40.63' W	Check Point	43° 12.86' N	122° 48.73' W	Water Source	43° 12.87' N	122° 46.41' W		
Drop Point	20	43° 22.00' N	122° 39.18' W	Drop Point	89	43° 13.36' N	122° 42.33' W	Value at Risk	43° 13.32' N	122° 36.12' W
Drop Point	63	43° 17.69' N	122° 28.81' W	Drop Point	88	43° 12.85' N	122° 41.90' W	Hot Spot - Spot Fire	43° 13.88' N	122° 38.33' W
Drop Point	64	43° 15.53' N	122° 27.12' W	Drop Point	86	43° 12.49' N	122° 42.17' W	Hot Spot - Spot Fire	43° 12.74' N	122° 46.98' W
Drop Point	65	43° 15.60' N	122° 25.69' W	Drop Point	86	43° 12.49' N	122° 42.17' W	Lookout	43° 15.48' N	122° 37.14' W
Drop Point	3	43° 23.83' N	122° 31.29' W	Drop Point	86	43° 12.49' N	122° 42.17' W	Repair Point	43° 12.46' N	122° 37.57' W
Drop Point	1	43° 20.66' N	122° 40.72' W	Drop Point	86	43° 12.49' N	122° 42.17' W	Dozer Push	43° 13.68' N	122° 39.20' W
Drop Point	31	43° 19.00' N	122° 33.57' W	Drop Point	86	43° 12.49' N	122° 42.17' W	Division Break	43° 12.14' N	122° 42.69' W
Drop Point	31	43° 17.19' N	122° 33.14' W	Drop Point	86	43° 12.49' N	122° 42.17' W	Division Break	43° 17.65' N	122° 36.31' W
Repeater	CMD 8	43° 13.44' N	122° 36.03' W	Drop Point	86	43° 12.49' N	122° 42.17' W	Sling Site	43° 13.82' N	122° 35.30' W
Division Break	Div S	43° 14.70' N	122° 35.92' W	Drop Point	86	43° 12.49' N	122° 42.17' W	Dip Site	43° 15.66' N	122° 37.84' W
Division Break	Div R	43° 11.36' N	122° 38.46' W	Drop Point	86	43° 12.49' N	122° 42.17' W	Water Source	43° 18.28' N	122° 40.62' W
Division Break	Div P	43° 15.84' N	122° 42.57' W	Drop Point	86	43° 12.49' N	122° 42.17' W	Dip Site	43° 18.28' N	122° 40.62' W
Drop Point	96	43° 18.31' N	122° 40.72' W	Drop Point	86	43° 12.49' N	122° 42.17' W	Dip Site	43° 17.49' N	122° 37.18' W
Drop Point	71	43° 11.07' N	122° 29.02' W	Drop Point	86	43° 12.49' N	122° 42.17' W	Other	43° 13.76' N	122° 35.41' W
Drop Point	61	43° 17.46' N	122° 33.88' W	Drop Point	86	43° 12.49' N	122° 42.17' W			