

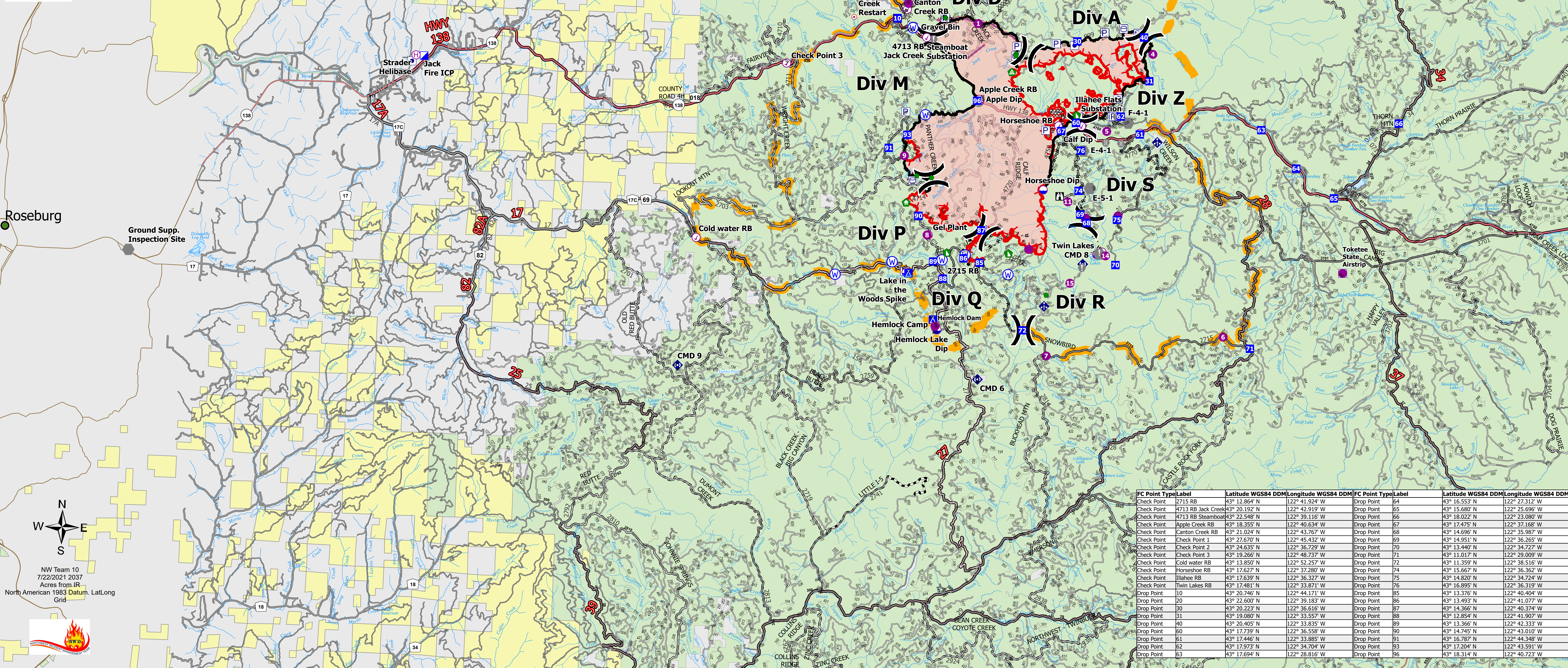
Transportation Map

Jack Fire
OR-UPF-000265
07/23/2021 - 24hr

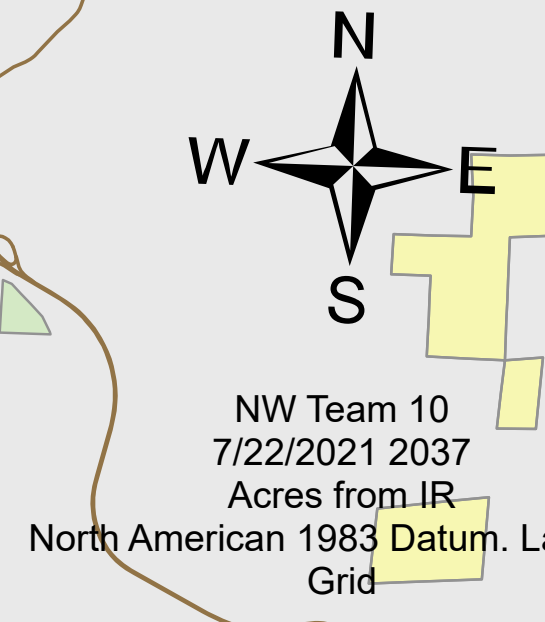
19,658 acres at 07/21/2021 2152



- Fire**
- Other Property
 - Pump
 - Water Tank
 - Check Point
 - Dip Site
 - Mobile Retardant Base
 - Helispot
 - Helibase
 - Sling Site
 - Division Break
 - Incident Command Post
 - Drop Point
 - Camp
 - Lookout
 - Hot Spot - Spot Fire
 - Value at Risk
 - Other
 - Structure Wrap
 - Repair Point
 - Landing or Log Deck
 - Hazard Tree
 - Dozer Push
 - Mobile Weather Unit
 - Repeater
 - Water Source
 - Completed Burnout
 - Completed Dozer Line
 - Completed Hand Line
 - Completed Road as Line
 - Planned Dozer Line
 - Planned Mixed Construction Line
 - Planned Road as Line
 - Other
 - Retardant Drop
 - Fire Edge
 - Contained Line
 - Wildfire Daily Fire Perimeter
 - A - Arterial
 - C - Collector
 - Paved Road
 - Gravel Road
 - Dirt Roads
 - Unimproved Roads
 - Closed Roads
 - Area Closure
 - Roseburg



Roseburg
Ground Supp. Inspection Site



FC Point Type	Label	Latitude WGS84 DDM	Longitude WGS84 DDM	FC Point Type	Label	Latitude WGS84 DDM	Longitude WGS84 DDM
Drop Point	54	43° 16.553' N	122° 27.312' W				
Drop Point	55	43° 15.680' N	122° 25.696' W				
Drop Point	56	43° 18.022' N	122° 23.080' W				
Drop Point	57	43° 17.475' N	122° 37.188' W				
Drop Point	58	43° 14.696' N	122° 35.987' W				
Drop Point	59	43° 14.951' N	122° 36.265' W				
Drop Point	60	43° 13.440' N	122° 34.727' W				
Drop Point	61	43° 11.017' N	122° 29.009' W				
Drop Point	62	43° 11.359' N	122° 38.516' W				
Drop Point	63	43° 15.667' N	122° 36.362' W				
Drop Point	64	43° 14.820' N	122° 34.724' W				
Drop Point	65	43° 16.895' N	122° 36.319' W				
Drop Point	66	43° 13.376' N	122° 40.404' W				
Drop Point	67	43° 13.493' N	122° 41.077' W				
Drop Point	68	43° 14.366' N	122° 40.374' W				
Drop Point	69	43° 12.854' N	122° 41.907' W				
Drop Point	70	43° 13.366' N	122° 42.333' W				
Drop Point	71	43° 14.745' N	122° 43.010' W				
Drop Point	72	43° 16.787' N	122° 44.348' W				
Drop Point	73	43° 17.204' N	122° 43.591' W				
Drop Point	74	43° 18.314' N	122° 40.723' W				