

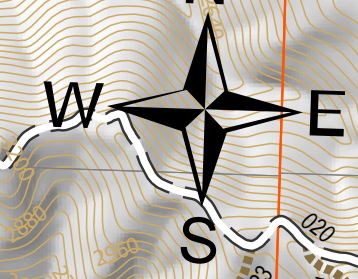
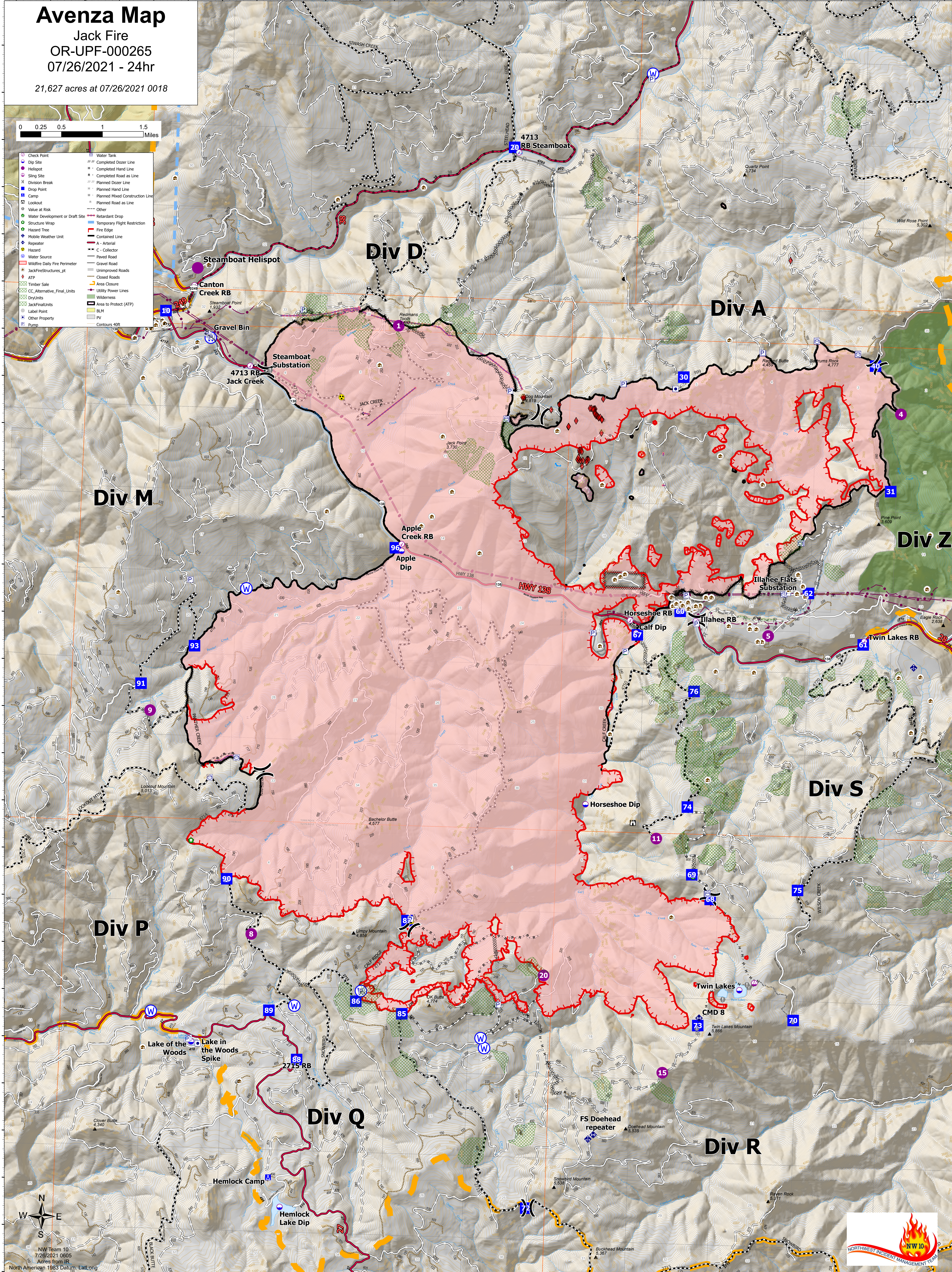
# Avenza Map

Jack Fire  
OR-UPF-000265  
07/26/2021 - 24hr

21,627 acres at 07/26/2021 0018



- Check Point
- Dip Site
- Helispot
- Sling Site
- Division Break
- Drop Point
- Camp
- Lookout
- Value at Risk
- Water Development or Draft Site
- Structure Wrap
- Hazard Tree
- Repeater
- Water Source
- Wildfire Daily Fire Perimeter
- JackFireStructures\_pt
- ATP
- Timber Sale
- CC, Alternative\_Final\_Units
- DryUnits
- JackFinalUnits
- Label Point
- Other Property
- Pump
- Water Tank
- Completed Dozer Line
- Completed Hand Line
- Completed Road as Line
- Planned Dozer Line
- Planned Hand Line
- Planned Mixed Construction Line
- Planned Road as Line
- Other
- Retardant Drop
- Temporary Flight Restriction
- Fire Edge
- Contained Line
- A - Arterial
- C - Collector
- Paved Road
- Gravel Road
- Unimproved Roads
- Closed Roads
- Area Closure
- Utility Power Lines
- Wilderness
- Area to Protect (ATP)
- BLM
- PV
- Contours 40ft



NW Team 10  
7/26/2021 0605  
Acres from IR  
North American 1983 Datum, Lattlong

