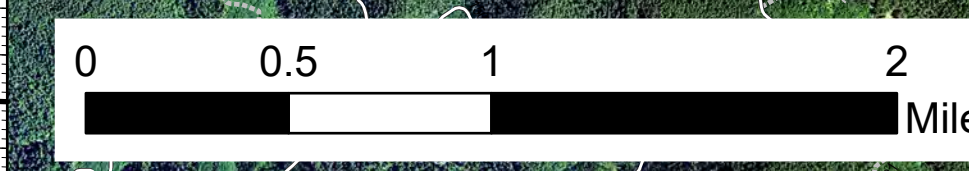


# Operations Map

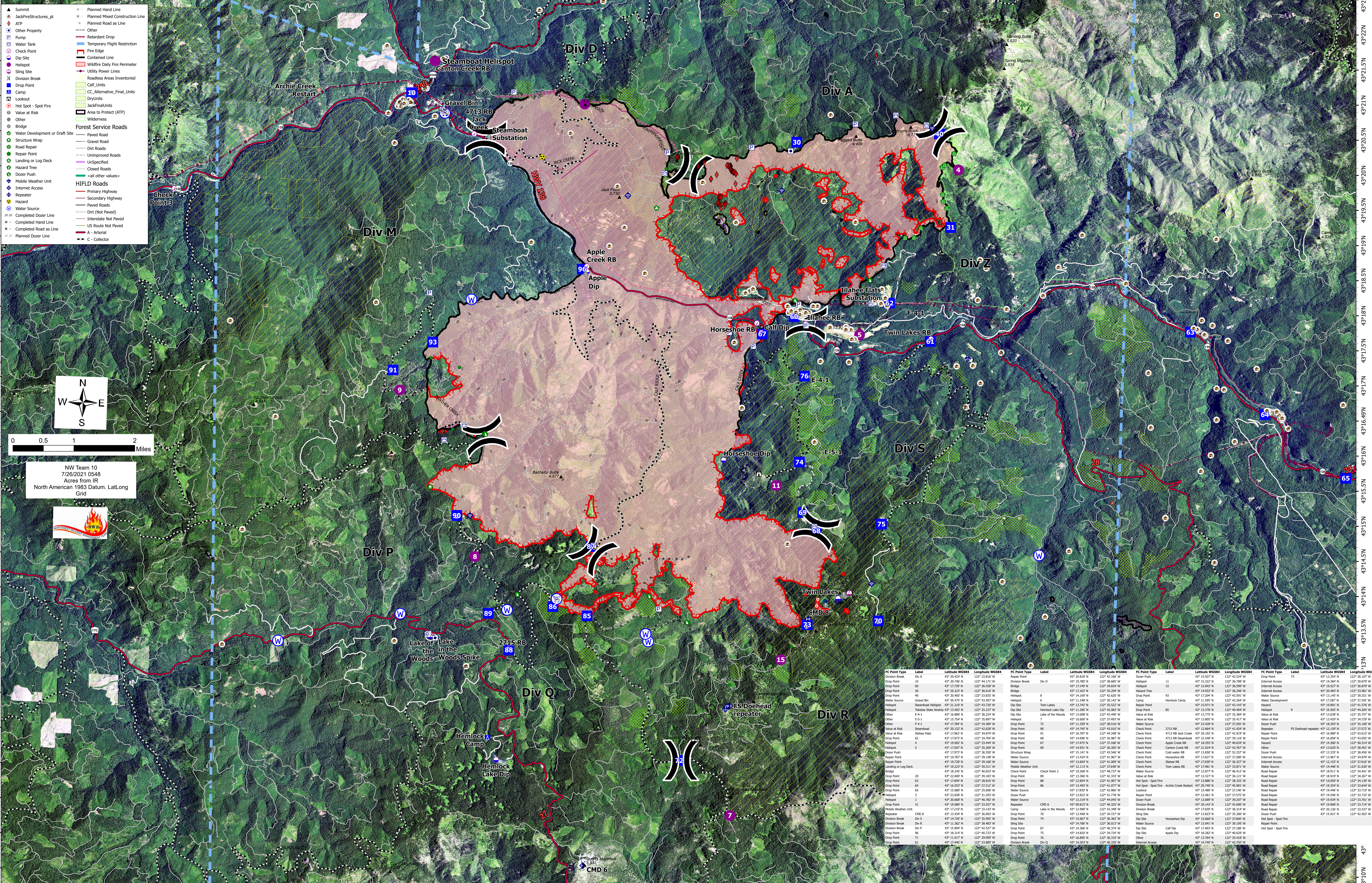
Jack Fire  
OR-UPF-000265  
07/26/2021 - 24hr

21,627 acres at 07/26/2021 0018

- ▲ Summit
- JackFireStructures\_pt
- ATP
- Other Property
- Pump
- Water Tank
- Check Point
- Dip Site
- Helicopter
- Sling Site
- Division Break
- Drop Point
- Camp
- Lookout
- Hot Spot - Spot Fire
- Value at Risk
- Other
- Forest Service Roads
- Water Development or Draft Site
- Structure Wrap
- Road Repair
- Repair Point
- Landing or Log Deck
- Hazard Tree
- Dozer Push
- Mobile Weather Unit
- Internet Access
- Repeater
- Hazard
- Water Source
- Completed Dozer Line
- Completed Hand Line
- Completed Road as Line
- Planned Dozer Line
- Planned Hand Line
- Planned Mixed Construction Line
- Planned Road as Line
- Other
- Retardant Drop
- Temporary Flight Restriction
- Fire Edge
- Contained Line
- Wildfire Daily Fire Perimeter
- Utility Power Lines
- Roadless Areas Inventoried
- Calf Units
- CC Alternative\_Final\_Units
- Dryline
- JackFireUnits
- Area to Protect (ATP)
- Wilderness
- Paved Road
- Gravel Road
- Dirt Roads
- Unimproved Roads
- Unspecified
- Closed Roads
- Dozer Push
- Primary Highway
- Secondary Highway
- Paved Road
- Dirt (Not Paved)
- Interstate Not Paved
- US Route Not Paved
- A - Arterial
- C - Collector



NW Team 10  
7/26/2021 0548  
Acres from IR  
North American 1983 Datum, LatLong  
Grid



FC Point Type	Label	Latitude WGS84	Longitude WGS84	FC Point Type	Label	Latitude WGS84	Longitude WGS84	FC Point Type	Label	Latitude WGS84	Longitude WGS84
Division Break	Div A	43° 20.424' N	122° 13.818' W	Repeater	Div D	43° 20.818' N	122° 42.166' W	Drop Point	73	43° 13.507' N	122° 36.107' W
Drop Point	10	43° 20.740' N	122° 44.171' W	Division Break	Div D	43° 19.760' N	122° 38.685' W	Drop Point	11	43° 15.322' N	122° 42.524' W
Drop Point	60	43° 17.274' N	122° 36.268' W	Bridge	15	43° 12.987' N	122° 34.654' W	Helicopter	16	43° 15.322' N	122° 36.798' W
Drop Point	30	43° 20.237' N	122° 36.616' W	Bridge	60	43° 17.610' N	122° 35.294' W	Hazard Tree	17	43° 14.932' N	122° 36.246' W
Drop Point	40	43° 20.487' N	122° 39.827' W	Helicopter	6	43° 14.109' N	122° 42.626' W	Drop Point	93	43° 12.294' N	122° 31.010' W
Water Source	Gravel Bin	43° 20.475' N	122° 43.507' W	Helicopter	8	43° 11.995' N	122° 30.120' W	Camp	53	43° 15.971' N	122° 42.264' W
Helicopter	Steamboat Helispot	43° 21.237' N	122° 43.730' W	Drop Point	7	43° 13.742' N	122° 35.322' W	Repair Point	85	43° 15.971' N	122° 43.343' W
Helicopter	Twin Lakes Helispot	43° 13.402' N	122° 35.270' W	Dip Site	Steamboat Lake Dip	43° 13.285' N	122° 42.688' W	Drop Point	41	43° 13.376' N	122° 42.494' W
Other	E-4-1	43° 16.889' N	122° 36.224' W	Dip Site	Lake of the Woods	43° 13.008' N	122° 43.146' W	Value at Risk	85	43° 13.376' N	122° 36.364' W
Other	E-5-1	43° 15.754' N	122° 35.857' W	Helicopter	7	43° 18.000' N	122° 37.493' W	Value at Risk	85	43° 13.376' N	122° 35.757' W
Other	F-4-1	43° 17.781' N	122° 34.847' W	Drop Point	72	43° 11.206' N	122° 48.177' W	Value at Risk	85	43° 13.376' N	122° 35.757' W
Value at Risk	Steamboat	43° 20.152' N	122° 42.628' W	Drop Point	90	43° 14.745' N	122° 43.030' W	Check Point	2715 RB	43° 12.864' N	122° 41.824' W
Value at Risk	Twin Lakes	43° 17.957' N	122° 34.574' W	Drop Point	91	43° 16.787' N	122° 44.246' W	Dip Site	4713 RB Calf Creek	43° 13.162' N	122° 42.210' W
Drop Point	62	43° 17.973' N	122° 34.704' W	Drop Point	68	43° 14.696' N	122° 35.967' W	Check Point	4713 RB Steamboat	43° 12.548' N	122° 36.116' W
Helicopter	4	43° 19.902' N	122° 33.444' W	Drop Point	67	43° 17.475' N	122° 37.168' W	Check Point	Apple Creek RB	43° 18.355' N	122° 40.634' W
Helicopter	5	43° 17.973' N	122° 36.268' W	Drop Point	69	43° 14.903' N	122° 36.293' W	Check Point	Canton Creek RB	43° 13.824' N	122° 35.202' W
Dozer Push	5	43° 17.973' N	122° 36.268' W	Structure Wrap	7	43° 15.141' N	122° 43.146' W	Check Point	Cold water RB	43° 13.809' N	122° 52.257' W
Drop Point	96	43° 19.760' N	122° 39.148' W	Water Source	75	43° 13.618' N	122° 41.607' W	Check Point	Horseshoe RB	43° 11.627' N	122° 33.288' W
Drop Point	96	43° 19.760' N	122° 39.148' W	Water Source	75	43° 13.618' N	122° 41.607' W	Check Point	Hillside RB	43° 12.639' N	122° 36.327' W
Landing or Log Deck	7	43° 18.221' N	122° 39.311' W	Mobile Weather Unit	Check Point 3	43° 12.113' N	122° 37.649' W	Check Point	Twin Lakes RB	43° 17.485' N	122° 33.871' W
Bridge	1	43° 18.262' N	122° 40.401' W	Drop Point	89	43° 13.366' N	122° 42.333' W	Value at Risk	85	43° 12.877' N	122° 36.412' W
Drop Point	20	43° 22.601' N	122° 39.183' W	Drop Point	69	43° 11.206' N	122° 48.177' W	Value at Risk	85	43° 15.322' N	122° 36.121' W
Drop Point	61	43° 17.646' N	122° 38.816' W	Drop Point	68	43° 12.858' N	122° 41.007' W	Hot Spot - Spot Fire	85	43° 15.322' N	122° 36.121' W
Drop Point	65	43° 16.553' N	122° 29.212' W	Drop Point	86	43° 13.492' N	122° 41.077' W	Hot Spot - Spot Fire	85	43° 15.322' N	122° 36.121' W
Drop Point	94	43° 15.681' N	122° 25.696' W	Water Source	75	43° 17.637' N	122° 42.866' W	Lookout	85	43° 15.489' N	122° 37.146' W
Helicopter	1	43° 23.618' N	122° 31.287' W	Drop Point	75	43° 13.618' N	122° 41.278' W	Drop Point	75	43° 12.461' N	122° 32.717' W
Helicopter	1	43° 20.688' N	122° 40.782' W	Water Source	75	43° 13.618' N	122° 41.278' W	Drop Point	75	43° 12.461' N	122° 32.717' W
Drop Point	31	43° 19.902' N	122° 33.577' W	Repeater	CMD 6	43° 18.913' N	122° 40.323' W	Drop Point	75	43° 12.461' N	122° 32.717' W
Repeater	CMD B	43° 12.217' N	122° 33.147' W	Repeater	Hemlock in the Woods	43° 12.990' N	122° 43.746' W	Division Break	85	43° 20.142' N	122° 42.690' W
Repeater	85	43° 13.434' N	122° 36.093' W	Drop Point	70	43° 13.440' N	122° 34.727' W	Division Break	85	43° 20.142' N	122° 42.690' W
Division Break	Div S	43° 14.620' N	122° 35.067' W	Drop Point	74	43° 15.649' N	122° 36.382' W	Dip Site	85	43° 13.823' N	122° 35.300' W
Division Break	Div R	43° 11.362' N	122° 38.481' W	Drop Point	74	43° 15.649' N	122° 36.382' W	Dip Site	85	43° 13.823' N	122° 35.300' W
Drop Point	71	43° 15.804' N	122° 42.027' W	Sling Site	85	43° 14.706' N	122° 36.013' W	Water Source	85	43° 13.823' N	122° 35.300' W
Drop Point	96	43° 18.314' N	122° 40.212' W	Drop Point	87	43° 14.366' N	122° 40.374' W	Dip Site	85	43° 13.823' N	122° 35.300' W
Drop Point	76	43° 11.017' N	122° 29.069' W	Drop Point	75	43° 14.837' N	122° 36.274' W	Drop Point	75	43° 13.764' N	122° 35.418' W
Drop Point	61	43° 17.442' N	122° 33.081' W	Division Break	Div Q	43° 14.303' N	122° 40.335' W	Internet Access	85	43° 14.749' N	122° 42.793' W