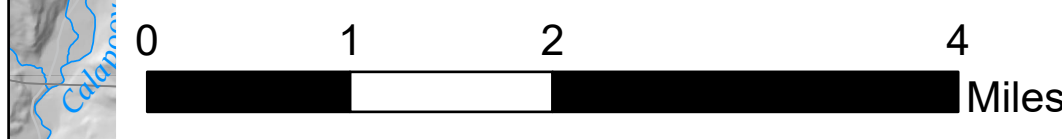


Air Ops

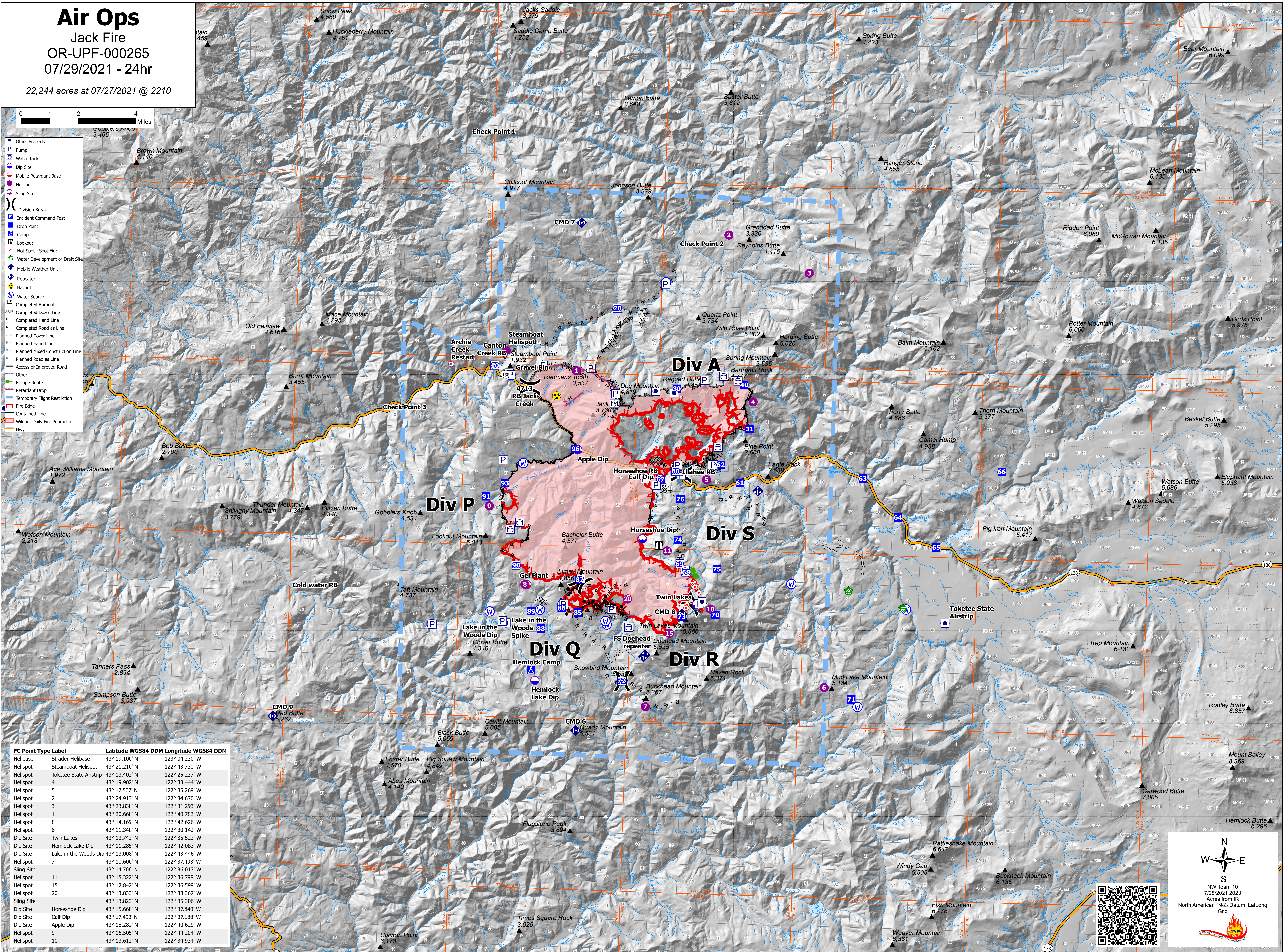
Jack Fire
OR-UPF-000265
07/29/2021 - 24hr

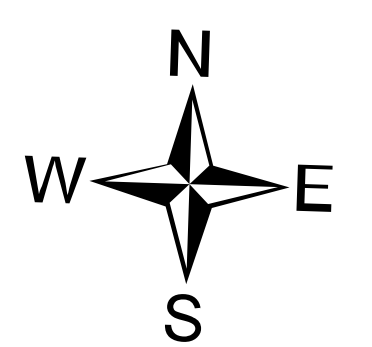
22,244 acres at 07/27/2021 @ 2210



- Other Property
- Pump
- Water Tank
- Dip Site
- Mobile Retardant Base
- Helispot
- Sling Site
- Division Break
- Incident Command Post
- Drop Point
- Camp
- Lookout
- Hot Spot - Spot Fire
- Water Development or Draft Site
- Mobile Weather Unit
- Repeater
- Hazard
- Water Source
- Completed Burnout
- Completed Dozer Line
- Completed Hand Line
- Completed Road as Line
- Planned Dozer Line
- Planned Hand Line
- Planned Mixed Construction Line
- Planned Road as Line
- Access or Improved Road
- Other
- Escape Route
- Retardant Drop
- Temporary Flight Restriction
- Fire Edge
- Contained Line
- Wildfire Daily Fire Perimeter
- Hwy

FC Point Type Label	Latitude WGS84	Longitude WGS84	DDM	DDM
Helibase	Strader Helibase	43° 19.100' N	123° 04.230' W	
Helispot	Steamboat Helispot	43° 21.210' N	122° 43.730' W	
Helispot	Toketee State Airstrip	43° 13.402' N	122° 25.237' W	
Helispot	4	43° 19.902' N	122° 33.444' W	
Helispot	5	43° 17.507' N	122° 35.269' W	
Helispot	2	43° 24.913' N	122° 34.670' W	
Helispot	3	43° 23.838' N	122° 31.293' W	
Helispot	1	43° 20.668' N	122° 40.782' W	
Helispot	8	43° 14.169' N	122° 42.626' W	
Helispot	6	43° 11.348' N	122° 30.142' W	
Dip Site	Twin Lakes	43° 13.742' N	122° 35.522' W	
Dip Site	Hemlock Lake Dip	43° 11.285' N	122° 42.083' W	
Dip Site	Lake in the Woods Dip	43° 13.008' N	122° 43.446' W	
Helispot	7	43° 10.600' N	122° 37.493' W	
Sling Site		43° 14.706' N	122° 36.013' W	
Helispot	11	43° 15.322' N	122° 36.798' W	
Helispot	15	43° 12.842' N	122° 36.599' W	
Helispot	20	43° 13.833' N	122° 38.367' W	
Sling Site		43° 13.823' N	122° 35.306' W	
Dip Site	Horseshoe Dip	43° 15.660' N	122° 37.840' W	
Dip Site	Calf Dip	43° 17.493' N	122° 37.188' W	
Dip Site	Apple Dip	43° 18.282' N	122° 40.629' W	
Helispot	9	43° 16.505' N	122° 44.204' W	
Helispot	10	43° 13.612' N	122° 34.934' W	




 NW Team 10
 7/28/2021 2023
 Acres from IR
 North American 1983 Datum, Lat/Long
 Grid

