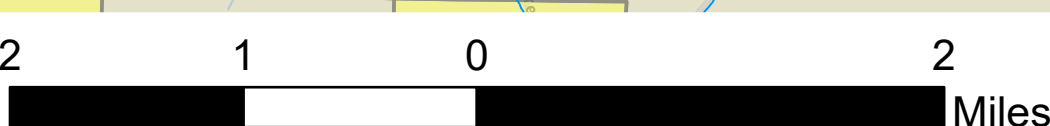


Transportation Map

Jack Fire
OR-UPF-000265
07/29/2021 - 24hr

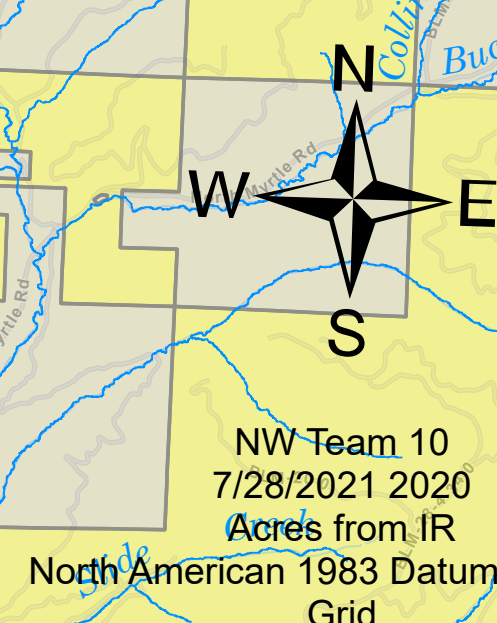
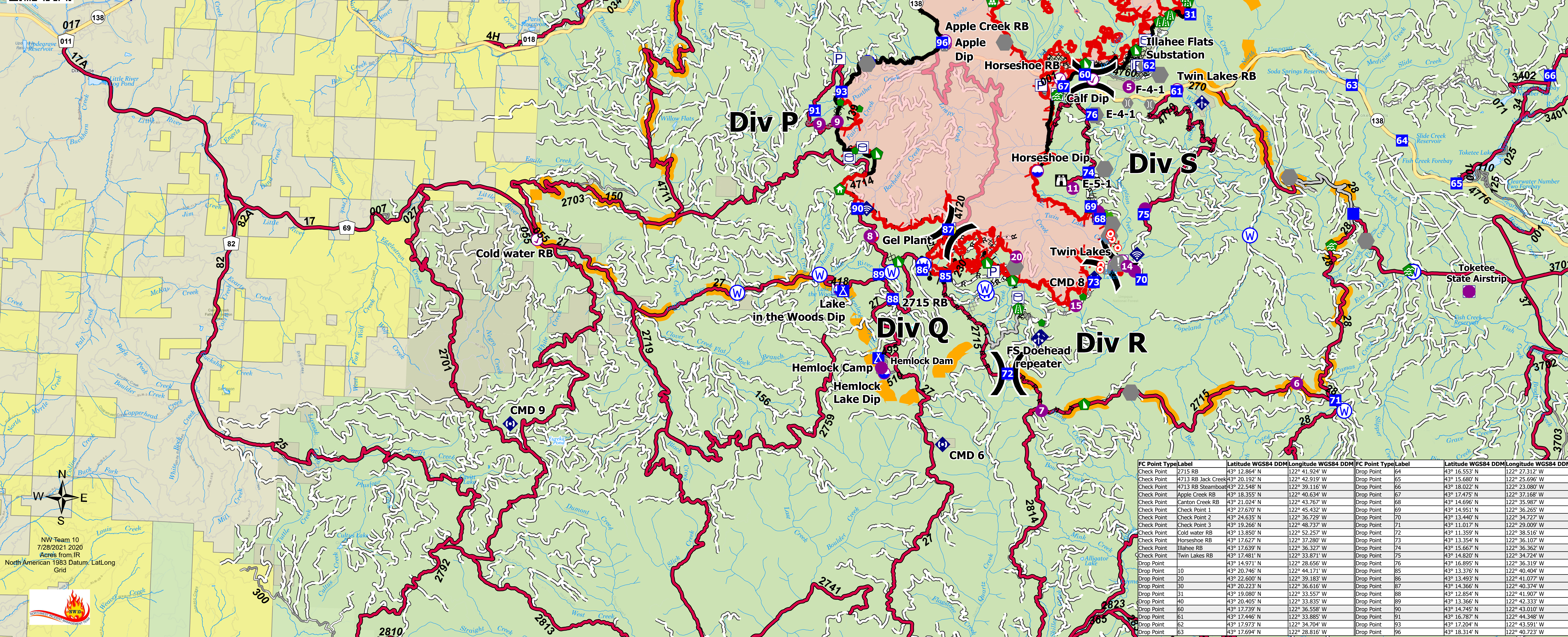
22,244 acres at 07/27/2021 @ 2210



- Fire
 - Other Property
 - Pump
 - Water Tank
 - Check Point (RB)
 - Dip Site
 - Mobile Retardant Base
 - Helispot
 - Helibase
 - Sling Site
 - Mobile Weather Unit
 - Internet Access
 - Repeater
 - Hazard
 - Water Source
 - Completed Burnout
 - Completed Dozer Line
 - Completed Hand Line
 - Completed Road as Line
 - Planned Dozer Line
 - Planned Hand Line
 - Planned Mixed Construction Line
 - Planned Road as Line
 - Access or Improved Road
 - Other
 - Escape Route
 - Retardant Drop
 - Fire Edge
 - Contained Line
 - Wildfire Daily Fire Perimeter
 - Area Closure
 - Primary Hwy
 - Arterial
 - Paved Road
 - Gravel Road
 - Dirt Roads
 - Unimproved Roads
- Division Break
- Incident Command Post
- Drop Point
- Camp
- Lookout
- Hot Spot - Spot Fire
- Value at Risk
- Other
- Bridge
- Water Development or Draft Site
- Structure Wrap
- Road Repair
- Repair Point
- Landing or Log Deck
- Hazard Tree
- Dozer Push



Strader Helibase
Jack Fire ICP



NW Team 10
7/28/2021 2020
Acres from IR
North American 1983 Datum, Lat/Long
Grid

FC Point Type	Label	Latitude WGS84	DDM	Longitude WGS84	DDM	FC Point Type	Label	Latitude WGS84	DDM	Longitude WGS84	DDM
Drop Point	54	43° 16.553' N	122° 27.312' W	Drop Point	64	43° 15.680' N	122° 25.696' W				
Drop Point	65	43° 18.022' N	122° 23.080' W	Drop Point	66	43° 17.475' N	122° 37.168' W				
Drop Point	67	43° 14.696' N	122° 35.987' W	Drop Point	68	43° 14.951' N	122° 36.265' W				
Drop Point	69	43° 13.440' N	122° 34.727' W	Drop Point	70	43° 11.017' N	122° 29.009' W				
Drop Point	71	43° 11.359' N	122° 36.516' W	Drop Point	72	43° 13.594' N	122° 36.107' W				
Drop Point	73	43° 15.667' N	122° 36.362' W	Drop Point	74	43° 14.820' N	122° 34.724' W				
Drop Point	75	43° 16.895' N	122° 36.319' W	Drop Point	76	43° 13.376' N	122° 40.404' W				
Drop Point	77	43° 13.493' N	122° 41.077' W	Drop Point	78	43° 14.366' N	122° 40.374' W				
Drop Point	79	43° 12.854' N	122° 41.907' W	Drop Point	80	43° 13.366' N	122° 42.333' W				
Drop Point	81	43° 14.745' N	122° 43.010' W	Drop Point	82	43° 16.787' N	122° 44.348' W				
Drop Point	83	43° 17.204' N	122° 43.591' W	Drop Point	84	43° 18.314' N	122° 40.723' W				