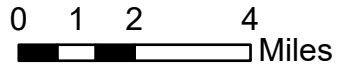


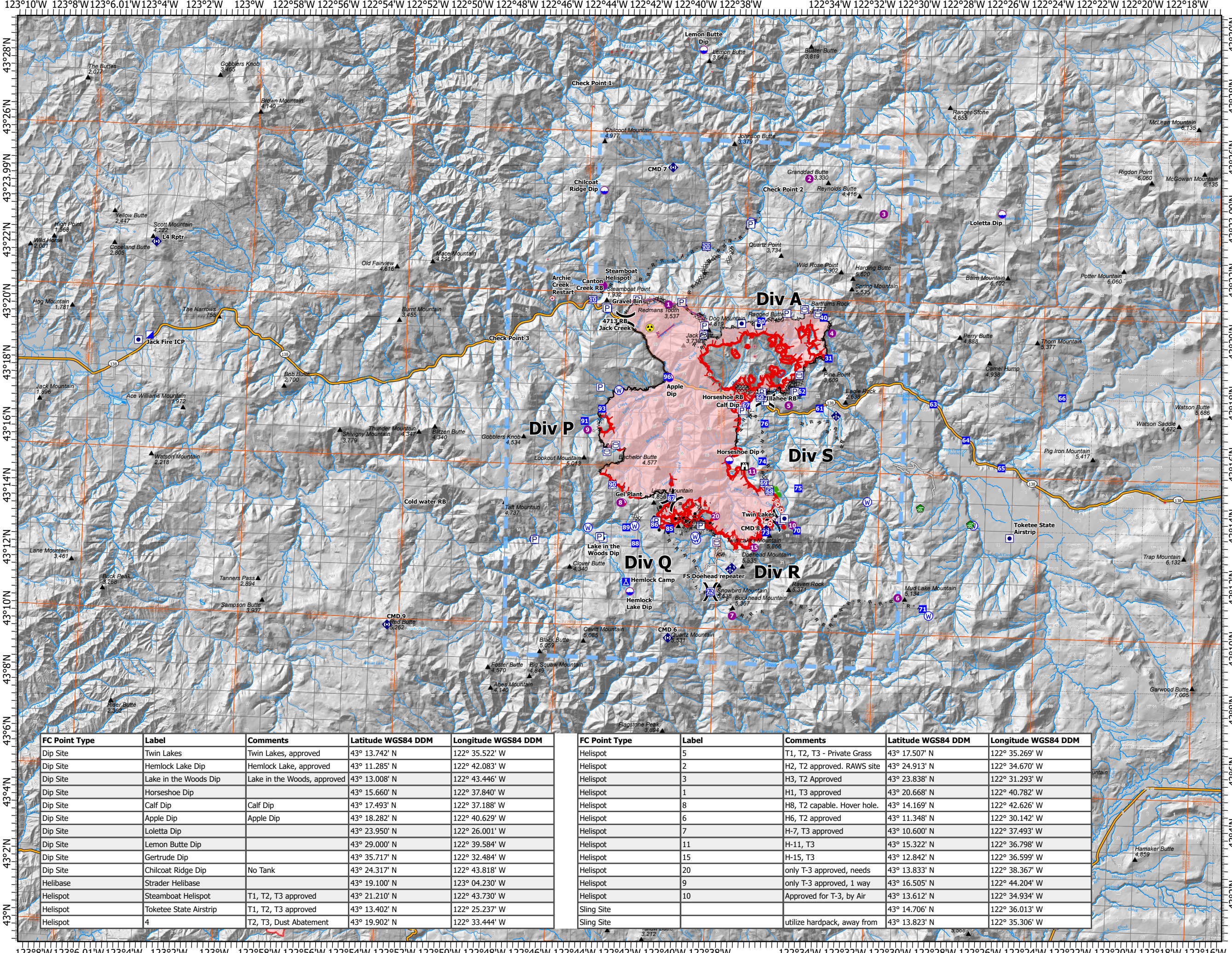
# Pilots Map

Jack Fire  
OR-UPF-000265  
07/30/2021 - 24hr

22,491 acres at 07/28/2021 @ 2223



- Dip Site
- Mobile Retardant Base
- Helispot
- Sling Site
- Division Break
- Incident Command Post
- Drop Point
- Camp
- Lookout
- Hot Spot - Spot Fire
- Water Development or Draft Site
- Mobile Weather Unit
- Repeater
- Hazard
- Water Source
- Completed Burnout
- Completed Dozer Line
- Completed Hand Line
- Completed Road as Line
- Planned Dozer Line
- Planned Hand Line
- Planned Mixed Construction Line
- Planned Road as Line
- Access or Improved Road
- Other
- Escape Route
- Retardant Drop
- Temporary Flight Restriction
- Fire Edge
- Contained Line
- Wildfire Daily Fire Perimeter
- Hwy



NW Team 10  
7/30/2021 0652  
Acres from IR  
North American 1983 Datum. LatLong Grid

| FC Point Type | Label                  | Comments                    | Latitude WGS84 DDM | Longitude WGS84 DDM | FC Point Type | Label | Comments                    | Latitude WGS84 DDM | Longitude WGS84 DDM |
|---------------|------------------------|-----------------------------|--------------------|---------------------|---------------|-------|-----------------------------|--------------------|---------------------|
| Dip Site      | Twin Lakes             | Twin Lakes, approved        | 43° 13.742' N      | 122° 35.522' W      | Helispot      | 5     | T1, T2, T3 - Private Grass  | 43° 17.507' N      | 122° 35.269' W      |
| Dip Site      | Hemlock Lake Dip       | Hemlock Lake, approved      | 43° 11.285' N      | 122° 42.083' W      | Helispot      | 2     | H2, T2 approved. RAWS site  | 43° 24.913' N      | 122° 34.670' W      |
| Dip Site      | Lake in the Woods Dip  | Lake in the Woods, approved | 43° 13.008' N      | 122° 43.446' W      | Helispot      | 3     | H3, T2 Approved             | 43° 23.838' N      | 122° 31.293' W      |
| Dip Site      | Horseshoe Dip          |                             | 43° 15.660' N      | 122° 37.840' W      | Helispot      | 1     | H1, T3 approved             | 43° 20.668' N      | 122° 40.782' W      |
| Dip Site      | Calf Dip               | Calf Dip                    | 43° 17.493' N      | 122° 37.188' W      | Helispot      | 8     | H8, T2 capable. Hover hole. | 43° 14.169' N      | 122° 42.626' W      |
| Dip Site      | Apple Dip              | Apple Dip                   | 43° 18.282' N      | 122° 40.629' W      | Helispot      | 6     | H6, T2 approved             | 43° 11.348' N      | 122° 30.142' W      |
| Dip Site      | Loletta Dip            |                             | 43° 23.950' N      | 122° 26.001' W      | Helispot      | 7     | H-7, T3 approved            | 43° 10.600' N      | 122° 37.493' W      |
| Dip Site      | Lemon Butte Dip        |                             | 43° 29.000' N      | 122° 39.584' W      | Helispot      | 11    | H-11, T3                    | 43° 15.322' N      | 122° 36.798' W      |
| Dip Site      | Gertrude Dip           |                             | 43° 35.717' N      | 122° 32.484' W      | Helispot      | 15    | H-15, T3                    | 43° 12.842' N      | 122° 36.599' W      |
| Dip Site      | Chilcoat Ridge Dip     | No Tank                     | 43° 24.317' N      | 122° 43.818' W      | Helispot      | 20    | only T-3 approved, needs    | 43° 13.833' N      | 122° 38.367' W      |
| Helibase      | Strader Helibase       |                             | 43° 19.100' N      | 123° 04.230' W      | Helispot      | 9     | only T-3 approved, 1 way    | 43° 16.505' N      | 122° 44.204' W      |
| Helispot      | Steamboat Helispot     | T1, T2, T3 approved         | 43° 21.210' N      | 122° 43.730' W      | Helispot      | 10    | Approved for T-3, by Air    | 43° 13.612' N      | 122° 34.934' W      |
| Helispot      | Toketee State Airstrip | T1, T2, T3 approved         | 43° 13.402' N      | 122° 25.237' W      | Sling Site    |       |                             | 43° 14.706' N      | 122° 36.013' W      |
| Helispot      | 4                      | T2, T3, Dust Abatement      | 43° 19.902' N      | 122° 33.444' W      | Sling Site    |       | utilize hardpack, away from | 43° 13.823' N      | 122° 35.306' W      |