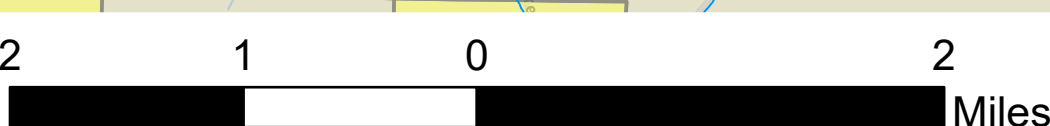


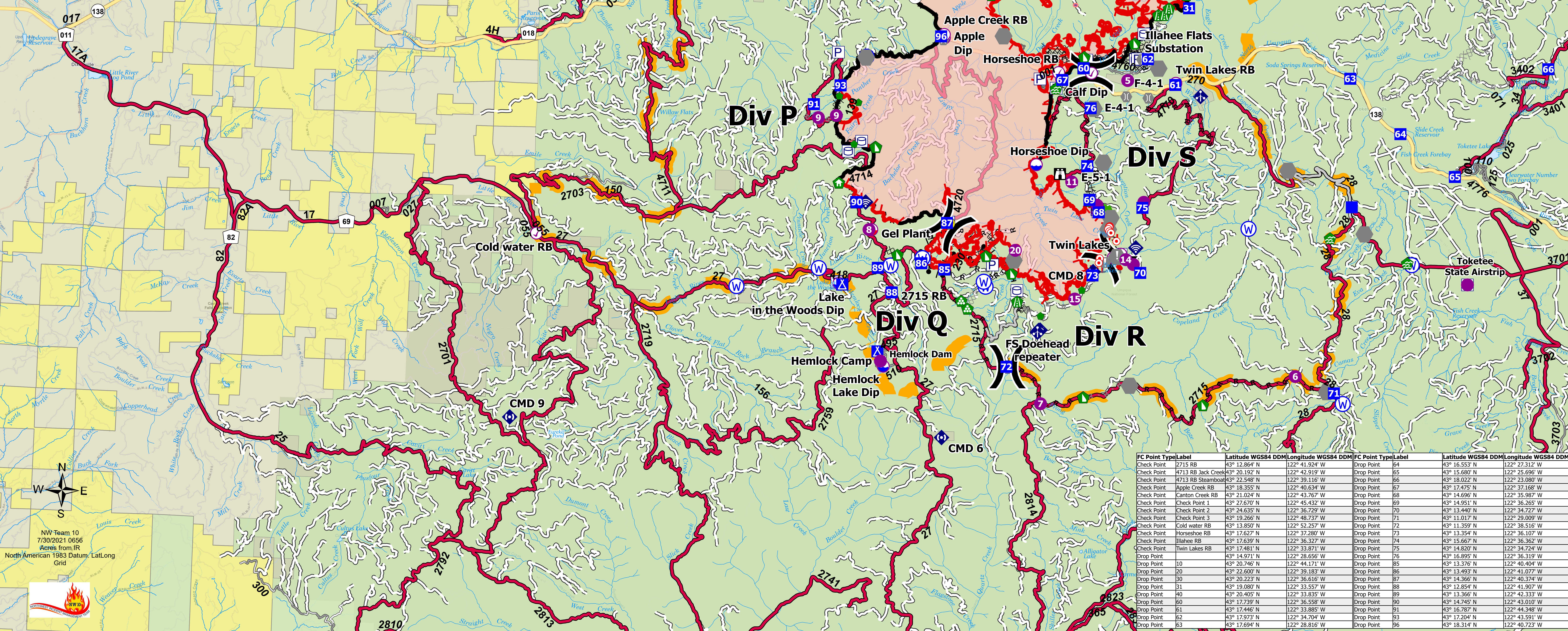
# Transportation Map

Jack Fire  
OR-UPF-000265  
07/30/2021 - 24hr

22,491 acres at 07/28/2021 @ 2223



- Fire**
  - Other Property
  - Pump
  - Water Tank
  - Check Point (RB)
  - Dip Site
  - Mobile Retardant Base
  - Helispot
  - Helibase
  - Sling Site
- Infrastructure**
  - Mobile Weather Unit
  - Internet Access
  - Repeater
  - Hazard
  - Water Source
  - Completed Burnout
  - Completed Dozer Line
  - Completed Hand Line
  - Completed Road as Line
  - Planned Dozer Line
  - Planned Hand Line
  - Planned Mixed Construction Line
  - Planned Road as Line
  - Access or Improved Road
  - Other
  - Escape Route
  - Retardant Drop
  - Fire Edge
  - Contained Line
  - Wildfire Daily Fire Perimeter
  - Area Closure
  - Primary Hwy
  - Arterial
  - Paved Road
  - Gravel Road
  - Dirt Roads
  - Unimproved Roads
- Other**
  - Division Break
  - Incident Command Post
  - Drop Point
  - Camp
  - Lookout
  - Hot Spot - Spot Fire
  - Value at Risk
  - Other
  - Bridge
  - Water Development or Draft Site
  - Structure Wrap
  - Road Repair
  - Repair Point
  - Landing or Log Deck
  - Hazard Tree
  - Dozer Push



FC Point Type	Label	Latitude WGS84	DDM	Longitude WGS84	DDM	FC Point Type	Label	Latitude WGS84	DDM	Longitude WGS84	DDM
Check Point	2715 RB	43° 12.864' N	122° 41.924' W	Drop Point	64	43° 16.553' N	122° 27.312' W				
Check Point	4713 RB Jack Creek	43° 20.192' N	122° 42.919' W	Drop Point	65	43° 15.680' N	122° 25.696' W				
Check Point	4713 RB Steamboat	43° 22.548' N	122° 39.116' W	Drop Point	66	43° 18.022' N	122° 23.088' W				
Check Point	Apple Creek RB	43° 18.355' N	122° 40.634' W	Drop Point	67	43° 17.475' N	122° 37.168' W				
Check Point	Canton Creek RB	43° 21.024' N	122° 43.767' W	Drop Point	68	43° 14.696' N	122° 35.987' W				
Check Point	Check Point 1	43° 27.670' N	122° 45.432' W	Drop Point	69	43° 14.951' N	122° 36.265' W				
Check Point	Check Point 2	43° 24.635' N	122° 36.729' W	Drop Point	70	43° 13.440' N	122° 34.727' W				
Check Point	Check Point 3	43° 19.266' N	122° 48.737' W	Drop Point	71	43° 11.017' N	122° 29.009' W				
Check Point	Cold water RB	43° 13.850' N	122° 52.257' W	Drop Point	72	43° 11.359' N	122° 38.516' W				
Check Point	Horseshoe RB	43° 17.627' N	122° 37.280' W	Drop Point	73	43° 13.354' N	122° 36.107' W				
Check Point	Illahae RB	43° 17.630' N	122° 36.327' W	Drop Point	74	43° 15.667' N	122° 36.362' W				
Check Point	Twin Lakes RB	43° 17.481' N	122° 33.871' W	Drop Point	75	43° 14.820' N	122° 34.724' W				
Drop Point	10	43° 20.746' N	122° 44.171' W	Drop Point	76	43° 16.895' N	122° 36.319' W				
Drop Point	20	43° 22.600' N	122° 39.183' W	Drop Point	77	43° 11.017' N	122° 29.009' W				
Drop Point	30	43° 20.223' N	122° 36.616' W	Drop Point	78	43° 13.376' N	122° 40.404' W				
Drop Point	31	43° 19.080' N	122° 33.557' W	Drop Point	79	43° 12.854' N	122° 41.907' W				
Drop Point	40	43° 20.405' N	122° 33.835' W	Drop Point	80	43° 13.366' N	122° 42.333' W				
Drop Point	50	43° 17.739' N	122° 36.558' W	Drop Point	81	43° 14.745' N	122° 43.010' W				
Drop Point	60	43° 17.446' N	122° 33.885' W	Drop Point	82	43° 16.787' N	122° 44.348' W				
Drop Point	70	43° 17.973' N	122° 34.704' W	Drop Point	83	43° 17.204' N	122° 43.591' W				
Drop Point	80	43° 17.694' N	122° 28.816' W	Drop Point	84	43° 18.314' N	122° 40.723' W				

NW Team 10  
7/30/2021 0656  
Acres from IR  
North American 1983 Datum, Lat/Long Grid

