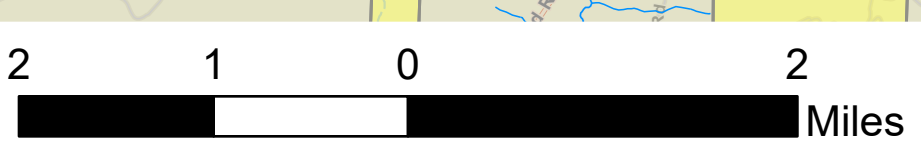


Transportation Map

Jack Fire
OR-UPF-000265
23,002 acres at 07/30/2021 @ 2316

Rough Patch Complex
OR-UPF-000373
90+ acres at 07/30/2021 @ 1930
08/01/2021 - 24hr

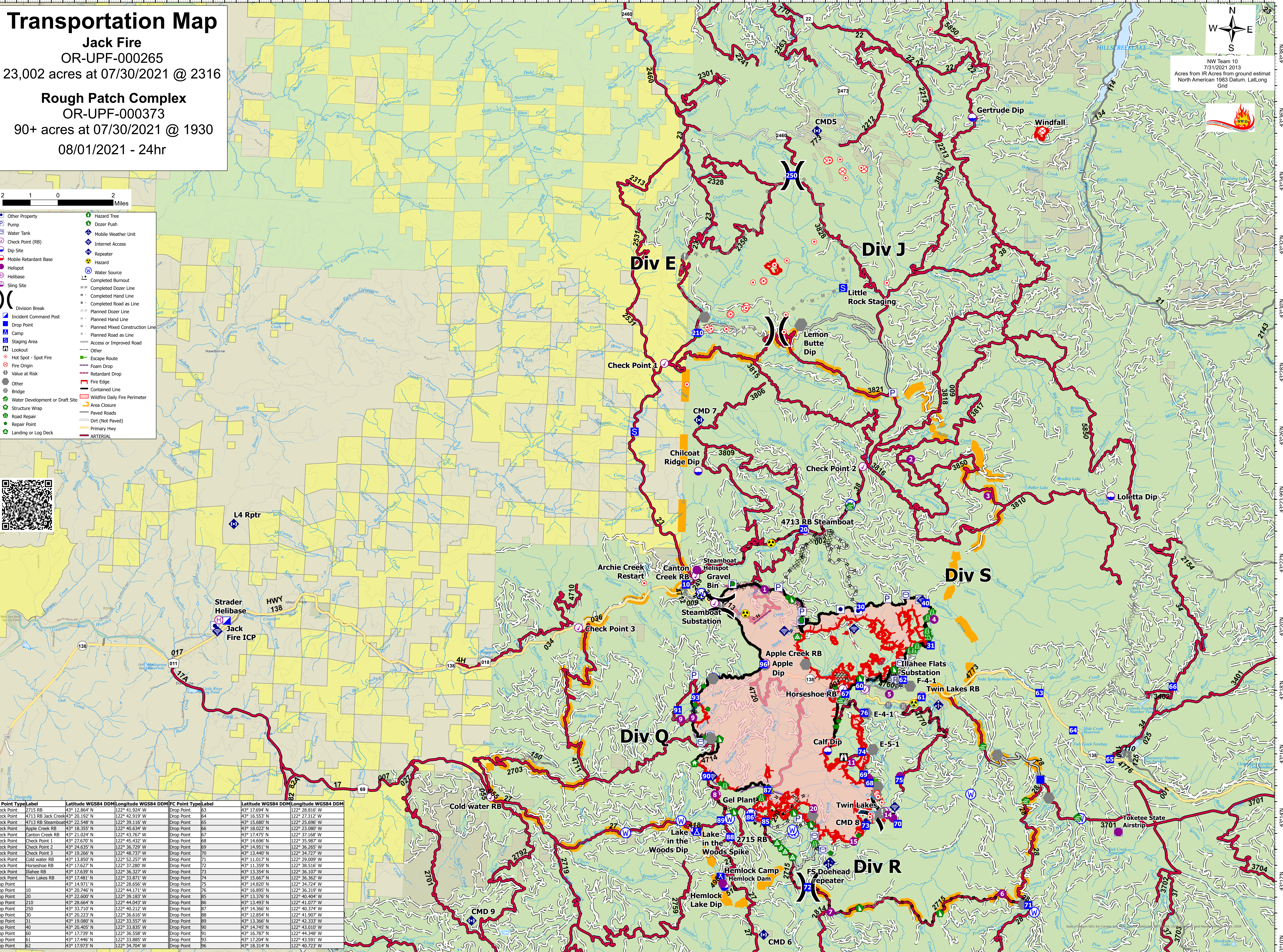
NW Team 10
7/31/2021 2013
Acres from IR Acres from ground estimat
North American 1983 Datum, Lat/Long
Grid



- Other Property
- Pump
- Water Tank
- Check Point (RB)
- Dip Site
- Mobile Retardant Base
- Helispot
- Helibase
- Sling Site
- Division Break
- Incident Command Post
- Camp
- Staging Area
- Lookout
- Hot Spot - Spot Fire
- Fire Origin
- Value at Risk
- Other
- Bridge
- Water Development or Draft Site
- Structure Wrap
- Road Repair
- Repair Point
- Landing or Log Deck
- Hazard Tree
- Dozer Push
- Mobile Weather Unit
- Internet Access
- Repeater
- Hazard
- Water Source
- Completed Burnout
- Completed Dozer Line
- Completed Hand Line
- Completed Road as Line
- Planned Dozer Line
- Planned Hand Line
- Planned Mixed Construction Line
- Planned Road as Line
- Access or Improved Road
- Other
- Escape Route
- Foam Drop
- Retardant Drop
- Fire Edge
- Contained Line
- Wildfire Daily Fire Perimeter
- Area Closure
- Paved Roads
- Dirt (Not Paved)
- Primary Hwy
- ARTERIAL



FC Point Type/Label	Latitude WGS84 DDM	Longitude WGS84 DDM	FC Point Type/Label	Latitude WGS84 DDM	Longitude WGS84 DDM
Check Point 2715 RB	43° 12.864' N	122° 41.924' W	Drop Point 63	43° 17.694' N	122° 28.816' W
Check Point 4713 RB Jack Creek	43° 20.192' N	122° 42.919' W	Drop Point 64	43° 16.553' N	122° 27.312' W
Check Point 4713 RB Steamboat	43° 22.548' N	122° 39.116' W	Drop Point 65	43° 15.680' N	122° 25.696' W
Check Point Apple Creek RB	43° 18.355' N	122° 40.534' W	Drop Point 66	43° 18.022' N	122° 23.080' W
Check Point Canton Creek RB	43° 21.034' N	122° 43.767' W	Drop Point 67	43° 17.475' N	122° 37.168' W
Check Point Check Point 1	43° 27.670' N	122° 45.432' W	Drop Point 68	43° 14.696' N	122° 35.987' W
Check Point Check Point 2	43° 24.635' N	122° 36.729' W	Drop Point 69	43° 14.951' N	122° 36.265' W
Check Point Check Point 3	43° 19.266' N	122° 48.737' W	Drop Point 70	43° 13.440' N	122° 34.727' W
Check Point Cold water RB	43° 13.850' N	122° 52.257' W	Drop Point 71	43° 11.017' N	122° 29.009' W
Check Point Horseshoe RB	43° 17.627' N	122° 37.280' W	Drop Point 72	43° 11.359' N	122° 38.516' W
Check Point Illahee RB	43° 17.639' N	122° 36.327' W	Drop Point 73	43° 13.354' N	122° 36.107' W
Check Point Twin Lakes RB	43° 17.481' N	122° 33.871' W	Drop Point 74	43° 15.667' N	122° 36.362' W
Drop Point 10	43° 20.746' N	122° 44.171' W	Drop Point 75	43° 14.820' N	122° 34.724' W
Drop Point 20	43° 22.600' N	122° 39.183' W	Drop Point 76	43° 16.895' N	122° 36.319' W
Drop Point 210	43° 28.664' N	122° 44.043' W	Drop Point 77	43° 13.376' N	122° 40.404' W
Drop Point 250	43° 33.710' N	122° 40.212' W	Drop Point 78	43° 13.493' N	122° 41.077' W
Drop Point 30	43° 20.223' N	122° 36.616' W	Drop Point 79	43° 14.366' N	122° 40.374' W
Drop Point 31	43° 19.080' N	122° 33.557' W	Drop Point 80	43° 12.854' N	122° 41.907' W
Drop Point 40	43° 20.405' N	122° 33.835' W	Drop Point 81	43° 13.366' N	122° 42.333' W
Drop Point 60	43° 17.739' N	122° 36.558' W	Drop Point 82	43° 14.745' N	122° 43.010' W
Drop Point 61	43° 17.446' N	122° 33.885' W	Drop Point 83	43° 16.787' N	122° 44.348' W
Drop Point 62	43° 19.973' N	122° 34.704' W	Drop Point 84	43° 17.204' N	122° 43.591' W
			Drop Point 86	43° 18.314' N	122° 40.723' W



43°38'N
43°36'N
43°34'N
43°32'N
43°30'N
43°28'N
43°26'N
43°24'N
43°22'N
43°20'N
43°18'N
43°16'N
43°14'N
43°12'N
43°10'N

123°14'W
123°12'W
123°10'W
123°8'W
123°6'W
123°4'W
123°2'W
123°W
122°58'W
122°56'W
122°54'W
122°52'W
122°50'W
122°48'W
122°46'W
122°44'W
122°42'W
122°40'W
122°38'W
122°36'W
122°34'W
122°32'W
122°30'W
122°28'W
122°26'W
122°24'W
122°22'W
122°20'W