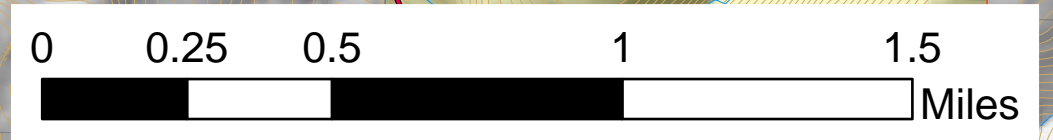


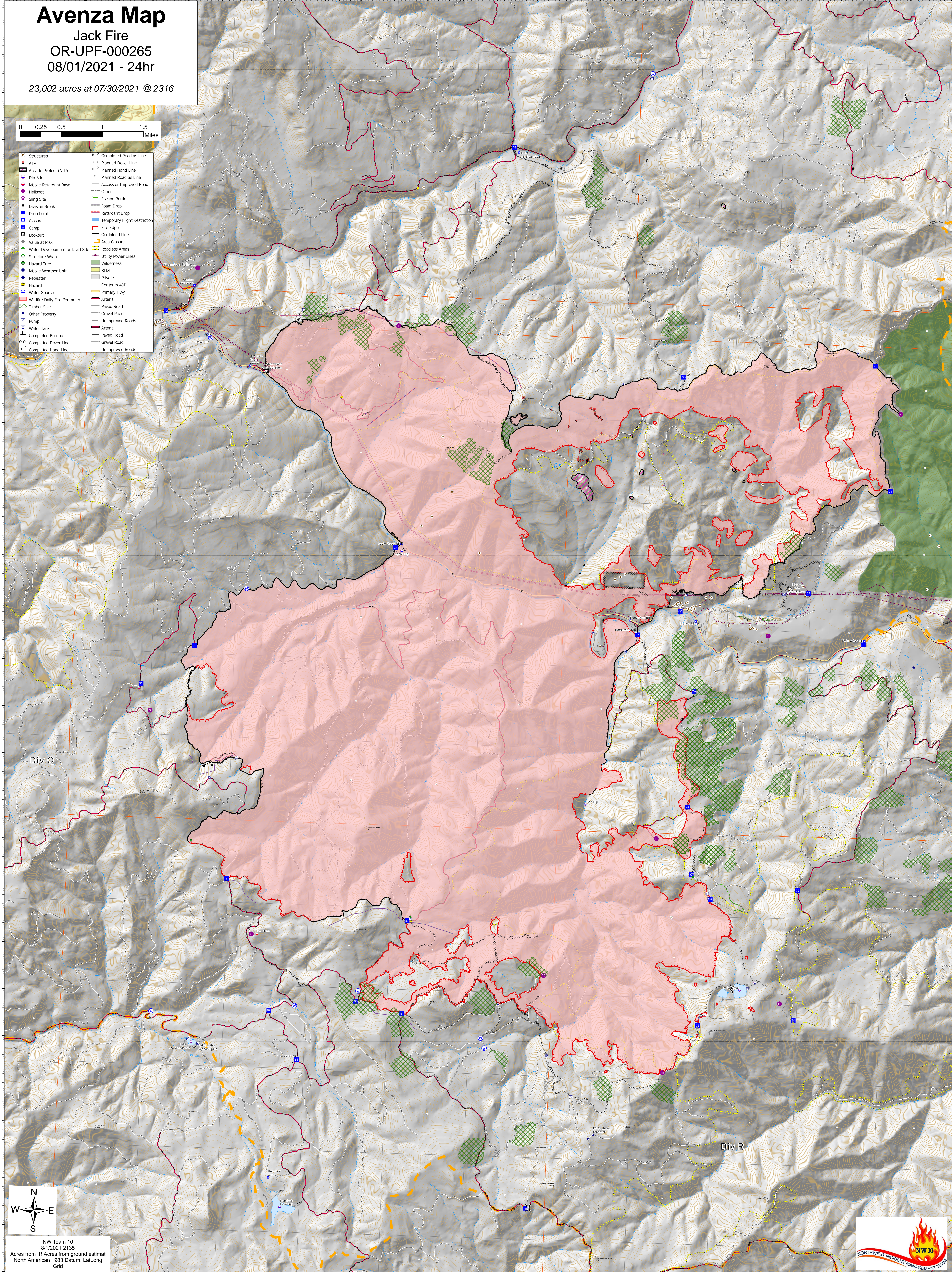
# Avenza Map

Jack Fire  
OR-UPF-000265  
08/01/2021 - 24hr

23,002 acres at 07/30/2021 @ 2316



- |                                 |                              |
|---------------------------------|------------------------------|
| Structures                      | Completed Road as Line       |
| ATP                             | Planned Dozer Line           |
| Area to Protect (ATP)           | Planned Hand Line            |
| Dip Site                        | Planned Road as Line         |
| Mobile Retardant Base           | Access or Improved Road      |
| Helispot                        | Other                        |
| Sling Site                      | Escape Route                 |
| Division Break                  | Retardant Drop               |
| Drop Point                      | Foam Drop                    |
| Closure                         | Temporary Flight Restriction |
| Camp                            | Fire Edge                    |
| Lookout                         | Contained Line               |
| Value at Risk                   | Area Closure                 |
| Water Development or Draft Site | Roadless Areas               |
| Structure Wrap                  | Utility Power Lines          |
| Hazard Tree                     | Wilderness                   |
| Mobile Weather Unit             | BLM                          |
| Repeater                        | Private                      |
| Hazard                          | Contours 40ft                |
| Water Source                    | Primary Hwy                  |
| Wildfire Daily Fire Perimeter   | Arterial                     |
| Timber Sale                     | Paved Road                   |
| Other Property                  | Gravel Road                  |
| Pump                            | Unimproved Roads             |
| Water Tank                      | Arterial                     |
| Completed Burnout               | Paved Road                   |
| Completed Dozer Line            | Gravel Road                  |
| Completed Hand Line             | Unimproved Roads             |



Div Q

Div R



NW Team 10  
8/1/2021 2135  
Acres from IR Acres from ground estimat  
North American 1983 Datum, LatLong  
Grid

