

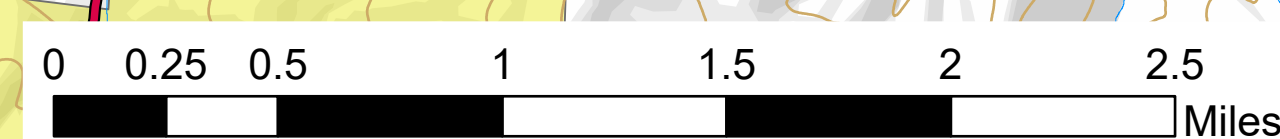
Briefing Map

Rough Patch Complex

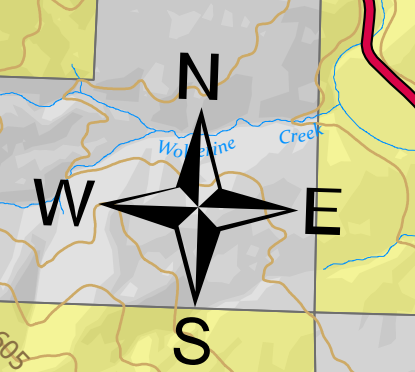
OR-UPF-000373

~353 acres as of 08/01/2021 @1105

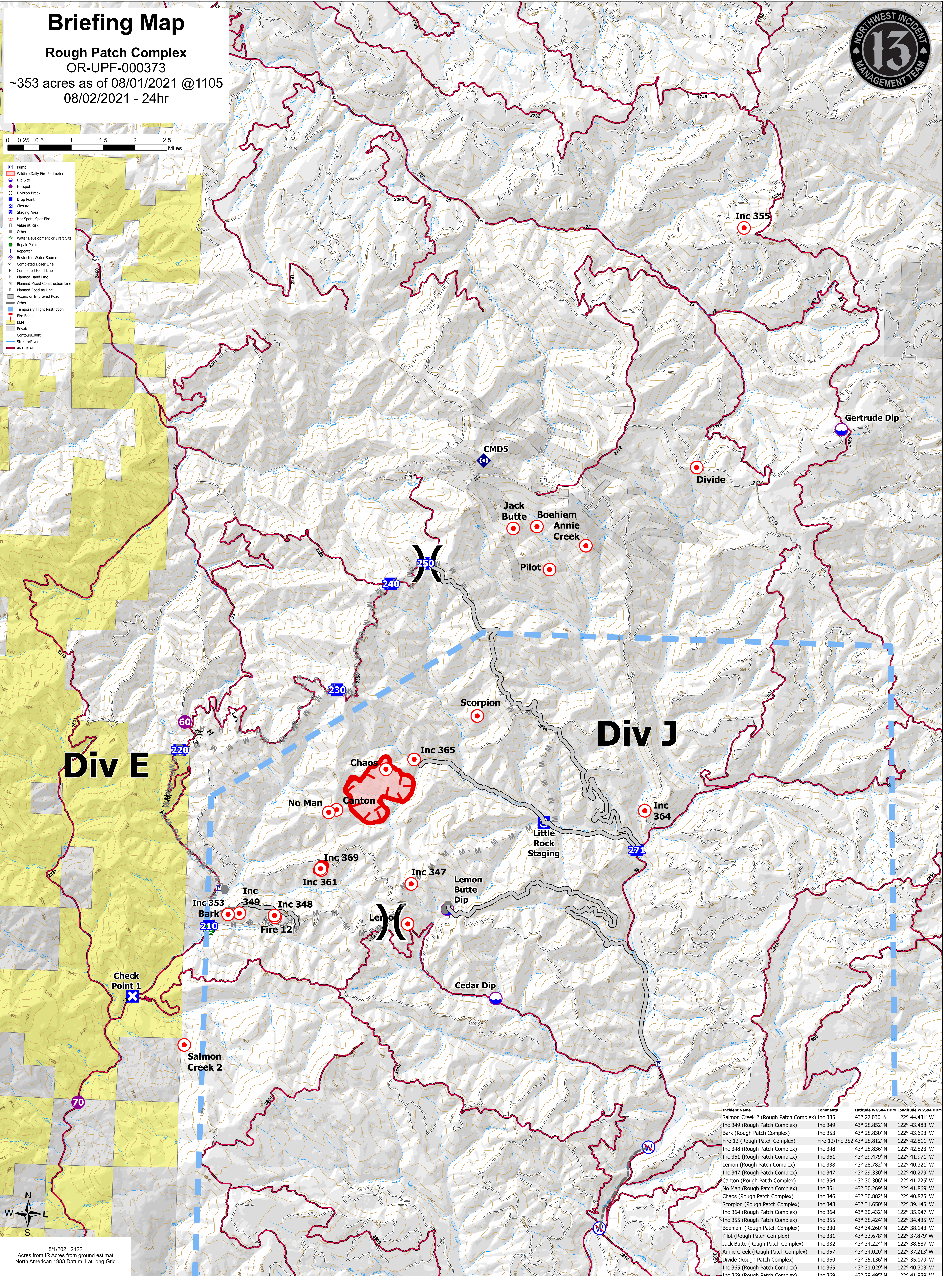
08/02/2021 - 24hr



- P Pump
- ▭ Wildfire Daily Fire Perimeter
- Dip Site
- Helispot
- X Division Break
- Drop Point
- ▭ Closure
- ▭ Staging Area
- Hot Spot - Spot Fire
- Value at Risk
- Other
- Water Development or Draft Site
- Repair Point
- Repeater
- Restricted Water Source
- Completed Doser Line
- Completed Hand Line
- Planned Hand Line
- Planned Mixed Construction Line
- Planned Road as Line
- Access or Improved Road
- Other
- Temporary Flight Restriction
- Fire Edge
- Private
- Contours 100ft
- Stream/River
- ARTERIAL



8/1/2021 2122
Acres from IR Acres from ground estimat
North American 1983 Datum, Lat/Long Grid



Incident Name	Comments	Latitude WGS84 DDM	Longitude WGS84 DDM
Salmon Creek 2 (Rough Patch Complex)	Inc 335	43° 27.030' N	122° 44.431' W
Inc 349 (Rough Patch Complex)	Inc 349	43° 28.852' N	122° 43.483' W
Bark (Rough Patch Complex)	Inc 353	43° 28.830' N	122° 43.693' W
Fire 12 (Rough Patch Complex)	Fire 12/Inc 352	43° 28.812' N	122° 42.811' W
Inc 348 (Rough Patch Complex)	Inc 348	43° 28.836' N	122° 42.823' W
Inc 361 (Rough Patch Complex)	Inc 361	43° 29.479' N	122° 41.971' W
Lemon (Rough Patch Complex)	Inc 338	43° 28.782' N	122° 40.321' W
Inc 347 (Rough Patch Complex)	Inc 347	43° 29.330' N	122° 40.279' W
Canton (Rough Patch Complex)	Inc 354	43° 30.306' N	122° 41.725' W
No Man (Rough Patch Complex)	Inc 351	43° 30.269' N	122° 41.869' W
Chaos (Rough Patch Complex)	Inc 346	43° 30.882' N	122° 40.825' W
Scorpion (Rough Patch Complex)	Inc 343	43° 31.650' N	122° 39.145' W
Inc 364 (Rough Patch Complex)	Inc 364	43° 30.432' N	122° 35.947' W
Inc 355 (Rough Patch Complex)	Inc 355	43° 38.424' N	122° 34.435' W
Boehiem (Rough Patch Complex)	Inc 330	43° 34.260' N	122° 38.143' W
Pilot (Rough Patch Complex)	Inc 331	43° 33.678' N	122° 37.879' W
Jack Butte (Rough Patch Complex)	Inc 332	43° 34.224' N	122° 38.587' W
Annie Creek (Rough Patch Complex)	Inc 357	43° 34.020' N	122° 37.213' W
Divide (Rough Patch Complex)	Inc 360	43° 35.136' N	122° 35.179' W
Inc 365 (Rough Patch Complex)	Inc 365	43° 31.029' N	122° 40.303' W
Inc 369 (Rough Patch Complex)	Inc 369	43° 29.495' N	122° 41.989' W