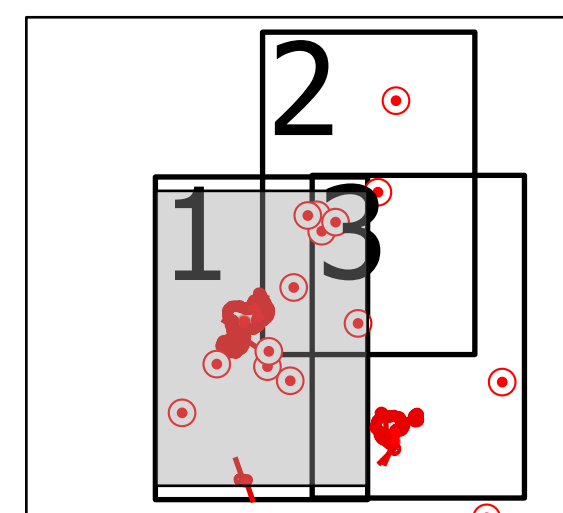


# IAP Map

Rough Patch Complex  
OR-UPF-000373  
08/08/2021 - 24hr

2,419 acres at 08/06/2021 @ 2255

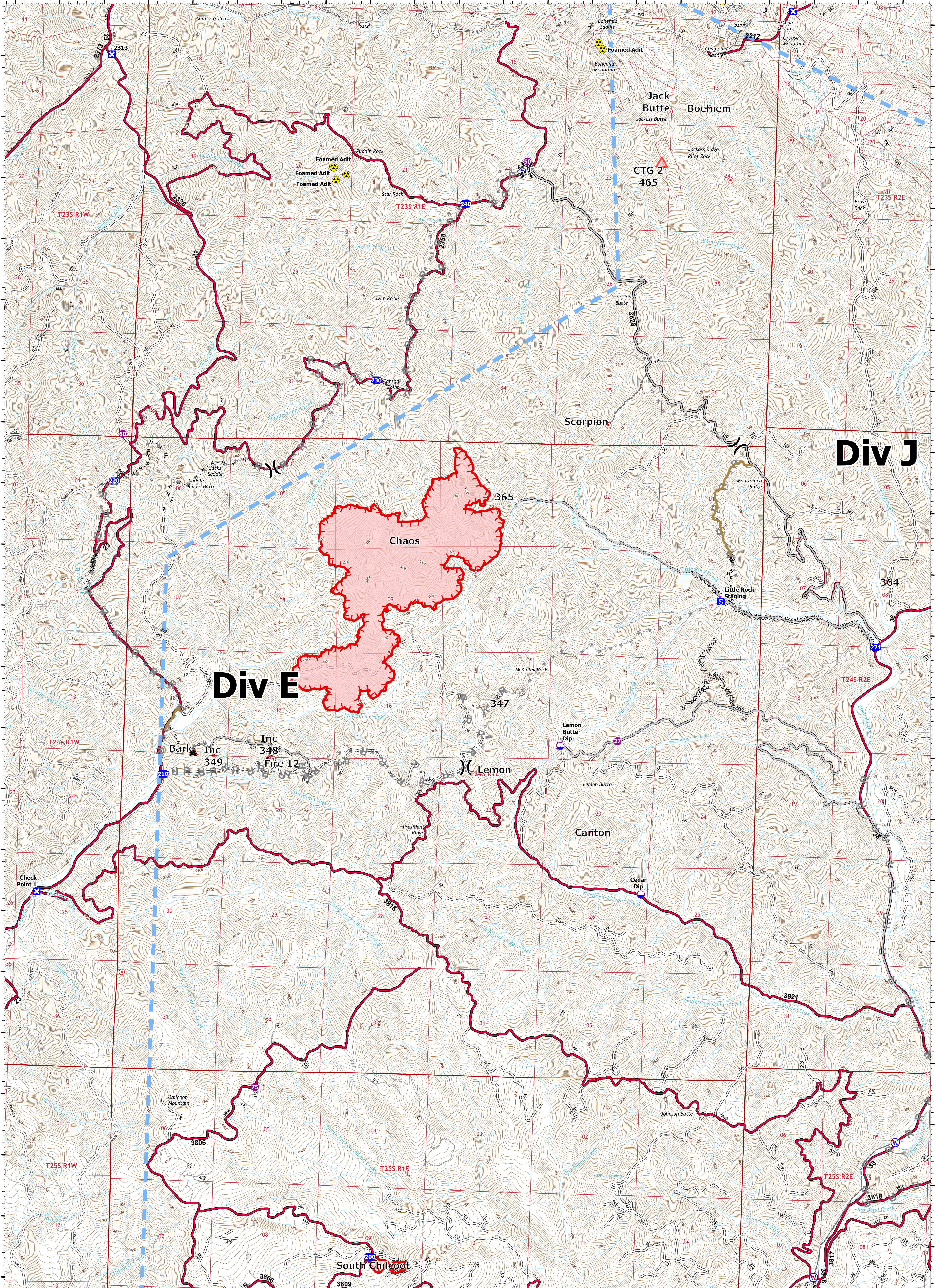
- |                      |                                 |                               |                     |
|----------------------|---------------------------------|-------------------------------|---------------------|
| Dip Site             | Repeater                        | Other                         | 4WD                 |
| Hellspace            | Hazard                          | Repair Line                   | Trail               |
| Division Break       | Restricted Water Source         | Route                         | Township/Range      |
| Drop Point           | Completed Dozer Line            | Temporary Flight Restriction  | Section             |
| Closure              | Completed Hand Line             | Fire Edge                     | Perennial Stream    |
| Staging Area         | Planned Hand Line               | Wildfire Daily Fire Perimeter | Intermittent Stream |
| Hot Spot - Spot Fire | Planned Mixed Construction Line | Dirt (Not Paved)              | 200 ft Contours     |
| Value at Risk        | Planned Road as Line            | Local Road                    | 40 ft Contours      |
|                      | Access or Improved Road         |                               |                     |



North American 1983 Datum, Lat/Long Grid

8/7/2021 2106

0 0.25 0.5 Miles



**Div E**

**Div J**

**Chaos**

**CTG 2 465**

**Scorpion**

**Canton**

**South Chillico**

**Bark Inc 349**

**Inc 348**

**Fire 12**

**Lemon**

**Lemon Butte Dip**

**Cedar Dip**

**Little Rock Staging**

**Foamed Adit**

**Foamed Adit**

**Foamed Adit**

**Foamed Adit**

**Jack Butte**

**Boehiem**

**Jackass Butte**

**Jackass Ridge**

**Pilot Rock**

**Scorpion Butte**

**Monte Rico Ridge**

**Lemon Butte**

**Cedar Butte**

**Johnson Butte**

**Johnson Creek**

**Whisper Creek**

**Thrus Springs**

**Three Springs**

**South Fork Cedar Creek**

**South Fork Cedar Creek**

**South Fork Cedar Creek**

**South Fork Cedar Creek**

**South Fork Cedar Creek**

**South Fork Cedar Creek**

**South Fork Cedar Creek**

**South Fork Cedar Creek**

**South Fork Cedar Creek**

**South Fork Cedar Creek**

**South Fork Cedar Creek**

**South Fork Cedar Creek**

**South Fork Cedar Creek**

**South Fork Cedar Creek**

**South Fork Cedar Creek**

**South Fork Cedar Creek**

**South Fork Cedar Creek**

**South Fork Cedar Creek**

**South Fork Cedar Creek**

**South Fork Cedar Creek**

**South Fork Cedar Creek**

**South Fork Cedar Creek**

**South Fork Cedar Creek**

**South Fork Cedar Creek**

**South Fork Cedar Creek**

**South Fork Cedar Creek**

**South Fork Cedar Creek**

**South Fork Cedar Creek**

**South Fork Cedar Creek**

**South Fork Cedar Creek**

**South Fork Cedar Creek**

**South Fork Cedar Creek**

**South Fork Cedar Creek**

**South Fork Cedar Creek**

**South Fork Cedar Creek**

**South Fork Cedar Creek**

**South Fork Cedar Creek**

**South Fork Cedar Creek**

**South Fork Cedar Creek**

**South Fork Cedar Creek**

**South Fork Cedar Creek**

**South Fork Cedar Creek**

**South Fork Cedar Creek**

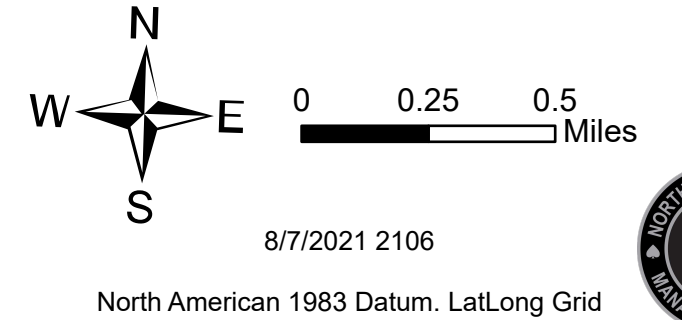
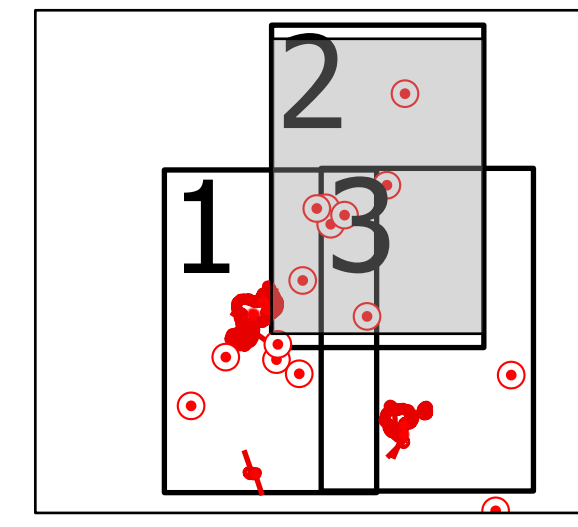
**South Fork Cedar Creek**

# IAP Map

Rough Patch Complex  
OR-UPF-000373  
08/08/2021 - 24hr

2,419 acres at 08/06/2021 @ 2255

- |                      |                                 |                               |                     |
|----------------------|---------------------------------|-------------------------------|---------------------|
| Dip Site             | Mobile Weather Unit             | Other                         | 4WD                 |
| Hellsport            | Repeater                        | Repair Line                   | Trail               |
| Division Break       | Hazard                          | Route                         | Township/Range      |
| Drop Point           | Completed Dozer Line            | Temporary Flight Restriction  | Section             |
| Closure              | Completed Hand Line             | Fire Edge                     | Perennial Stream    |
| Staging Area         | Planned Mixed Construction Line | Wildfire Daily Fire Perimeter | Intermittent Stream |
| Hot Spot - Spot Fire | Planned Road as Line            | ARTERIAL                      | 200 ft Contours     |
|                      | Access or Improved Road         | Dirt (Not Paved)              | 40 ft Contours      |
|                      |                                 | Local Road                    |                     |

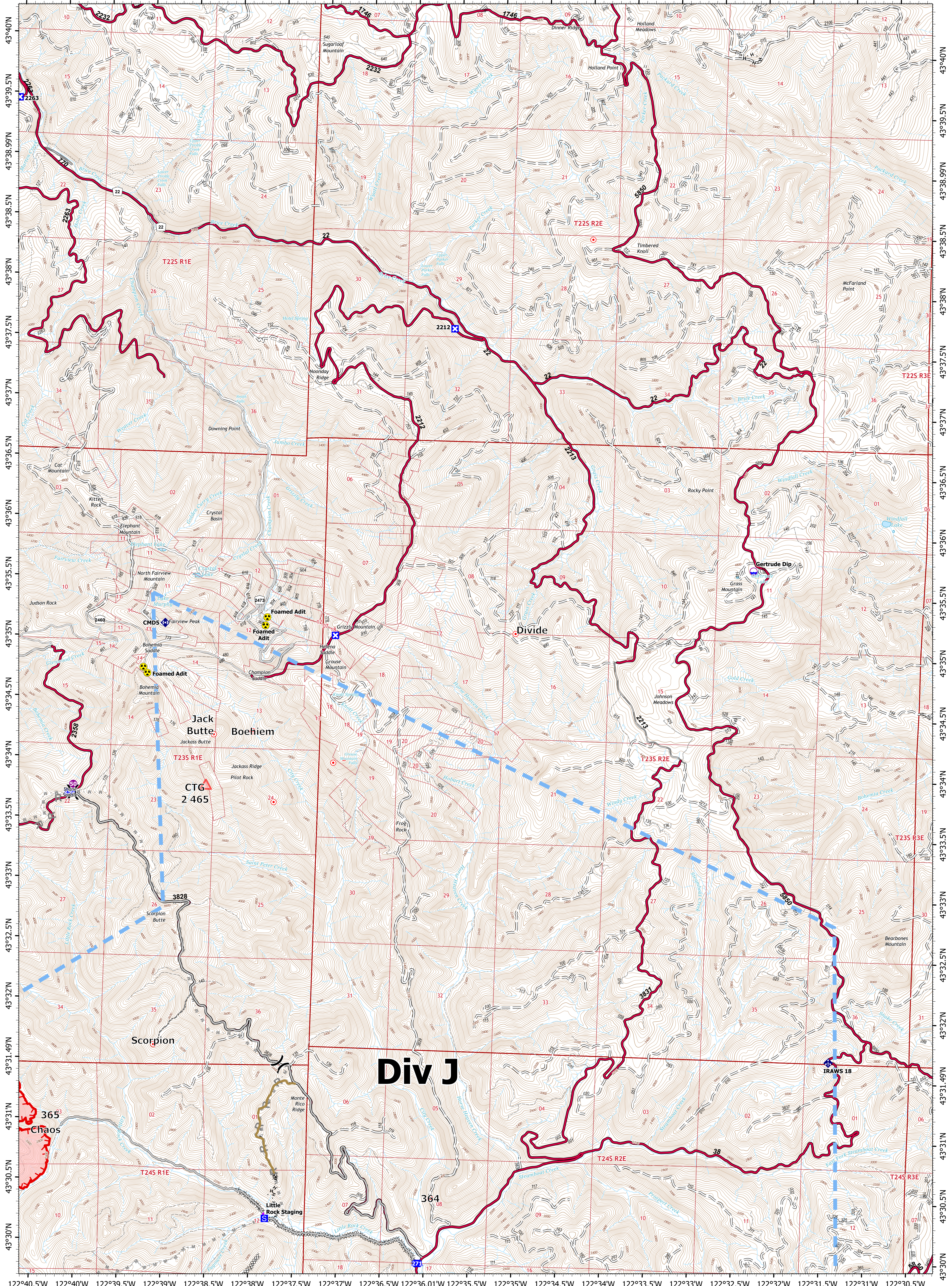


8/7/2021 2106

North American 1983 Datum, Lat/Long Grid



Page 2

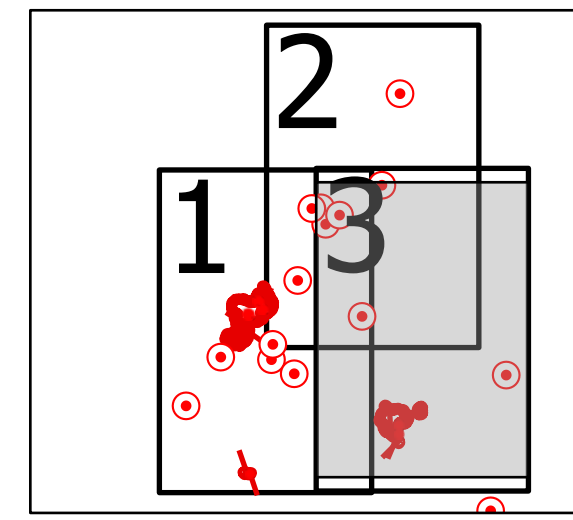


# IAP Map

Rough Patch Complex  
OR-UPF-000373  
08/08/2021 - 24hr

2,419 acres at 08/06/2021 @ 2255

- |                      |                                 |                               |                     |
|----------------------|---------------------------------|-------------------------------|---------------------|
| Helispot             | Restricted Water Source         | Repair Line                   | 4WD                 |
| Division Break       | Completed Dozer Line            | Route                         | Trail               |
| Drop Point           | Completed Hand Line             | Temporary Flight Restriction  | Township/Range      |
| Closure              | Planned Dozer Line              | Fire Edge                     | Section             |
| Staging Area         | Planned Hand Line               | Contained Line                | Perennial Stream    |
| Hot Spot - Spot Fire | Planned Mixed Construction Line | Wildfire Daily Fire Perimeter | Intermittent Stream |
| Mobile Weather Unit  | Planned Road as Line            | ARTERIAL                      | 200 ft Contours     |
| Hazard               | Access or Improved Road         | Dirt (Not Paved)              | 40 ft Contours      |
|                      | Local Road                      | Perennial Lake                |                     |
|                      | Other                           |                               |                     |



8/7/2021 2106

North American 1983 Datum, Lat/Long Grid



Page 3

