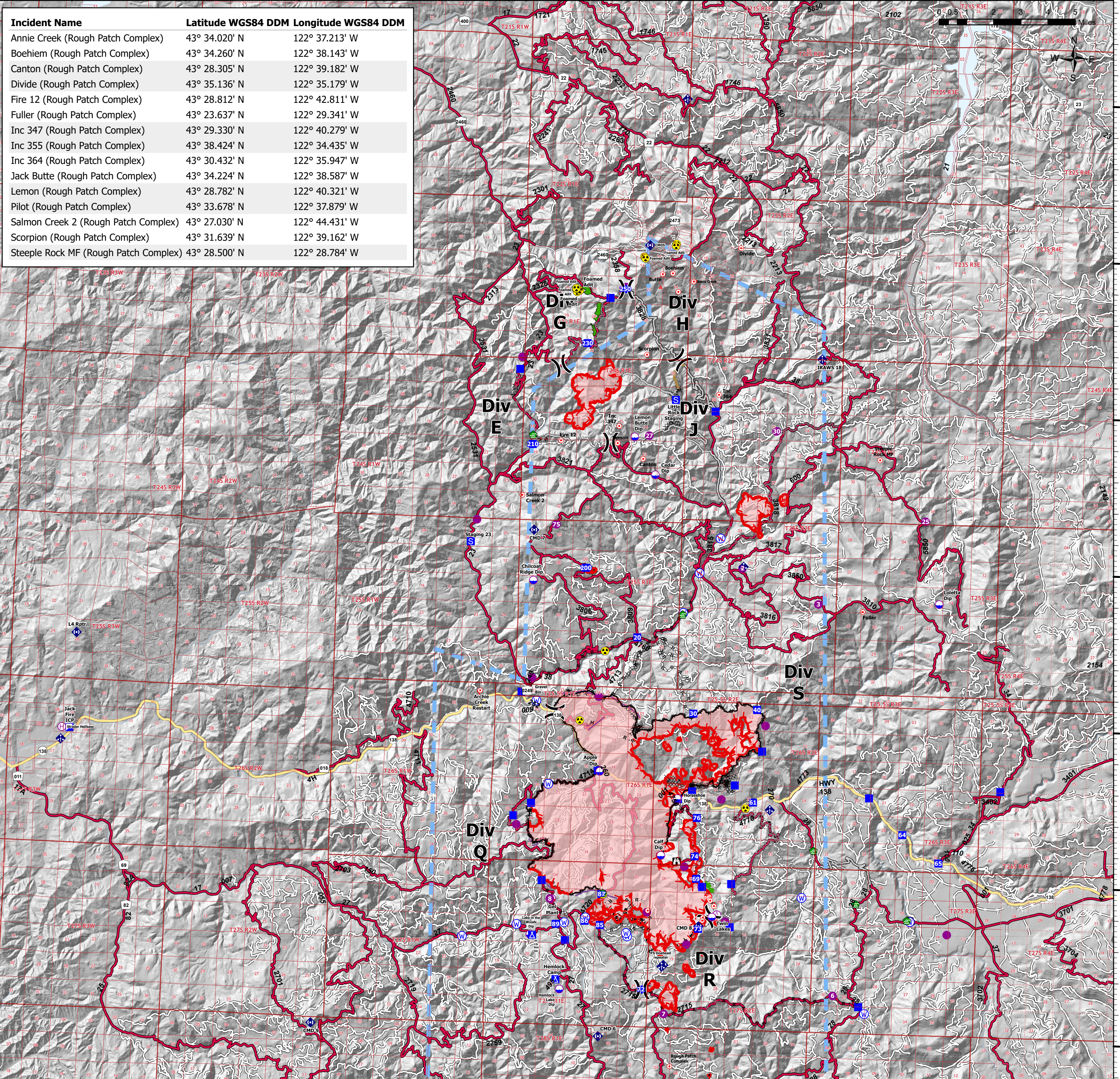


Incident Name	Latitude WGS84 DDM	Longitude WGS84 DDM
Annie Creek (Rough Patch Complex)	43° 34.020' N	122° 37.213' W
Boehiem (Rough Patch Complex)	43° 34.260' N	122° 38.143' W
Canton (Rough Patch Complex)	43° 28.305' N	122° 39.182' W
Divide (Rough Patch Complex)	43° 35.136' N	122° 35.179' W
Fire 12 (Rough Patch Complex)	43° 28.812' N	122° 42.811' W
Fuller (Rough Patch Complex)	43° 23.637' N	122° 29.341' W
Inc 347 (Rough Patch Complex)	43° 29.330' N	122° 40.279' W
Inc 355 (Rough Patch Complex)	43° 38.424' N	122° 34.435' W
Inc 364 (Rough Patch Complex)	43° 30.432' N	122° 35.947' W
Jack Butte (Rough Patch Complex)	43° 34.224' N	122° 38.587' W
Lemon (Rough Patch Complex)	43° 28.782' N	122° 40.321' W
Pilot (Rough Patch Complex)	43° 33.678' N	122° 37.879' W
Salmon Creek 2 (Rough Patch Complex)	43° 27.030' N	122° 44.431' W
Scorpion (Rough Patch Complex)	43° 31.639' N	122° 39.162' W
Steeple Rock MF (Rough Patch Complex)	43° 28.500' N	122° 28.784' W



FC Point Type	Label	Comments	Latitude WGS84 DDM	Longitude WGS84 DDM	FC Point Type	Label	Comments	Latitude WGS84 DDM	Longitude WGS84 DDM
Dip Site	Twin Lakes	Twin Lakes, approved	43° 13.742' N	122° 35.522' W	Helispot	3	H3, T2 Approved	43° 23.838' N	122° 31.293' W
Dip Site	Hemlock Lake Dip	Hemlock Lake, approved	43° 11.285' N	122° 42.083' W	Helispot	1	H1, T3 approved	43° 20.668' N	122° 40.782' W
Dip Site	Lake in the Woods Dip	Lake in the Woods, approved	43° 13.008' N	122° 43.446' W	Helispot	8	H8, T2 capable. Hover hole.	43° 14.169' N	122° 42.626' W
Dip Site	Calf Dip		43° 15.660' N	122° 37.841' W	Helispot	6	H6, T2 approved	43° 11.348' N	122° 30.142' W
Dip Site	Horseshoe Dip	Calf Dip	43° 17.494' N	122° 37.189' W	Helispot	7	H-7, T3 approved	43° 10.600' N	122° 37.493' W
Dip Site	Apple Dip	Apple Dip	43° 18.282' N	122° 40.630' W	Helispot	11	H-11, T3	43° 15.322' N	122° 36.798' W
Dip Site	Loletta Dip		43° 23.950' N	122° 26.001' W	Helispot	15	H-15, T3	43° 12.842' N	122° 36.600' W
Dip Site	Lemon Butte Dip		43° 29.000' N	122° 39.584' W	Helispot	20	only T-3 approved, needs	43° 13.833' N	122° 38.367' W
Dip Site	Gertrude Dip		43° 35.717' N	122° 32.484' W	Helispot	9	only T-3 approved, 1 way	43° 16.505' N	122° 44.204' W
Dip Site	Chilcoat Ridge Dip	No Tank	43° 24.317' N	122° 43.818' W	Helispot	10	Approved for T-3, by Air	43° 13.612' N	122° 34.934' W
Dip Site	Cedar Dip		43° 27.807' N	122° 38.624' W	Helispot	60	Needs approval- rhart,	43° 31.436' N	122° 44.627' W
Dip Site	Red Top Dip		43° 04.940' N	122° 57.396' W	Helispot	70	Needs approval	43° 26.199' N	122° 46.380' W
Dip Site	Dumant Dip	Type 2	43° 02.237' N	122° 48.471' W	Helispot	75	Approved by AOB D Markason	43° 26.125' N	122° 42.891' W
Helibase	Strader Helibase		43° 19.100' N	123° 04.230' W	Helispot	30	Approved by AOB D Markason	43° 29.324' N	122° 33.368' W
Helispot	Steamboat Helispot	T1, T2, T3 approved	43° 21.210' N	122° 43.730' W	Helispot	25	Slight slope down toward	43° 26.584' N	122° 26.710' W
Helispot	Toketee State Airstrip	T1, T2, T3 approved	43° 13.402' N	122° 25.237' W	Helispot	27		43° 29.055' N	122° 38.944' W
Helispot	4	T2, T3, Dust Abatement	43° 19.902' N	122° 33.444' W	Helispot	50		43° 33.775' N	122° 40.171' W
Helispot	5	T1, T2, T3 - Private Grass	43° 17.507' N	122° 35.269' W	Sling Site			43° 14.706' N	122° 36.013' W
Helispot	2	H2, T2 approved. RAWS site	43° 24.913' N	122° 34.670' W	Sling Site		utilize hardpack, away from	43° 13.823' N	122° 35.307' W



Pilots Map

NW IMT 13 - CH
08/8/2021 - 24hr
North American 1983 Datum. Lat/Long Grid
Lat Long Grid:
Label Tick 5m, Large Tick 1m, Small Tick 10s

Jack Fire
OR-UPF-000265
23,290 acres at 08/06/2021 @ 2255

Rough Patch Complex
OR-UPF-000373
2,419 acres at 08/06/2021 @ 2255

- Dip Site
- Mobile Retardant Base
- Helispot
- Helibase
- Sling Site
- Division Break
- Incident Command Post
- Drop Point
- Camp
- Staging Area
- Lookout
- Hot Spot - Spot Fire
- Water Development or Draft Site
- Mobile Weather Unit
- Repeater
- Hazard
- Water Source
- Restricted Water Source
- Completed Burnout
- Completed Dozer Line
- Completed Hand Line
- Completed Road as Line
- Planned Dozer Line
- Planned Fuel Break
- Planned Hand Line
- Planned Mixed Construction Line
- Planned Road as Line
- Access or Improved Road
- Other
- Repair Line
- Paved Road
- Planned Road as Line
- Foam Drop
- Retardant Drop
- Temporary Flight Restriction
- Fire Edge
- Contained Line
- Wildfire Daily Fire Perimeter
- Helicopter Logging
- Primary Highway
- Dirt (Not Paved)
- Primary Hwy
- ARTERIAL
- L - LOCAL

