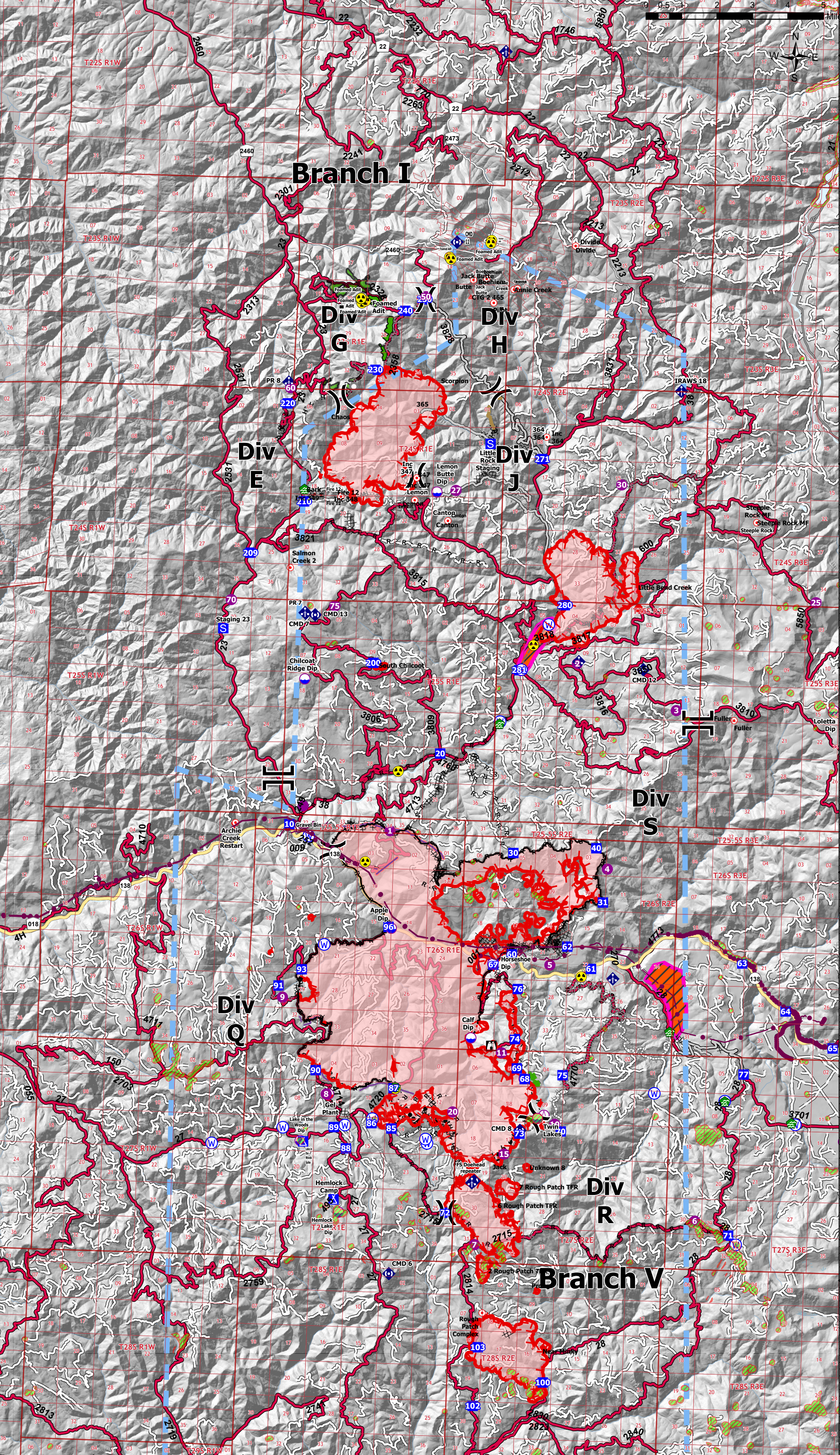
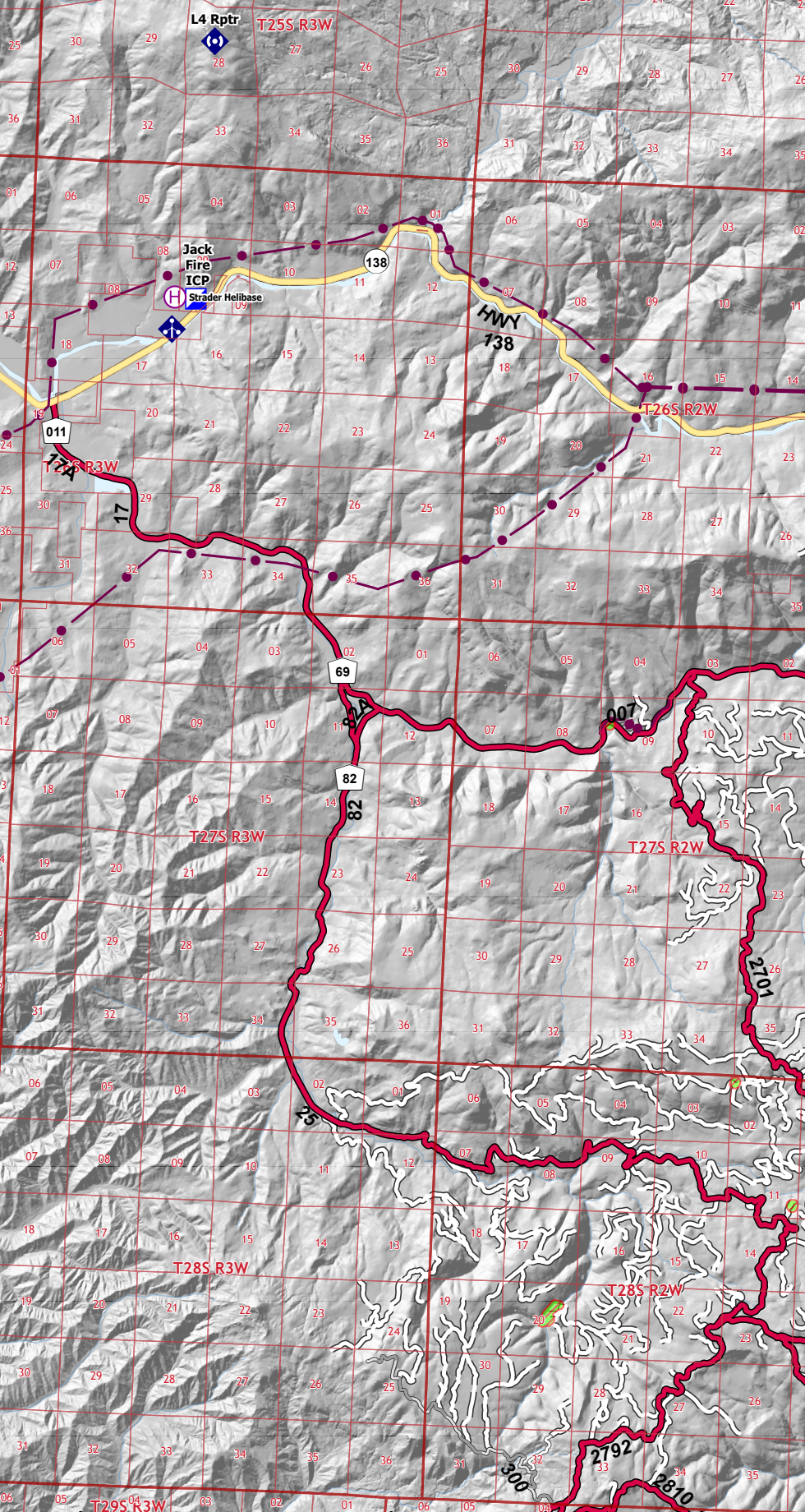


Incident Name	Latitude WGS84 DDM	Longitude WGS84 DDM
Annie Creek (Rough Patch Complex)	43° 34.020' N	122° 37.213' W
Annie Creek (Rough Patch Complex)	43° 34.020' N	122° 37.213' W
Boehiem (Rough Patch Complex)	43° 34.260' N	122° 38.143' W
Canton (Rough Patch Complex)	43° 28.305' N	122° 39.182' W
Divide (Rough Patch Complex)	43° 35.136' N	122° 35.179' W
Fire 12 (Rough Patch Complex)	43° 28.812' N	122° 42.811' W
Fuller (Rough Patch Complex)	43° 23.637' N	122° 29.341' W
Inc 347 (Rough Patch Complex)	43° 29.330' N	122° 40.279' W
Inc 355 (Rough Patch Complex)	43° 38.424' N	122° 34.435' W
Inc 364 (Rough Patch Complex)	43° 30.432' N	122° 35.947' W
Jack Butte (Rough Patch Complex)	43° 34.224' N	122° 38.587' W
Lemon (Rough Patch Complex)	43° 28.782' N	122° 40.321' W
Pilot (Rough Patch Complex)	43° 33.678' N	122° 37.879' W
Rough Patch Complex	43° 08.934' N	122° 37.162' W
Salmon Creek 2 (Rough Patch Complex)	43° 27.030' N	122° 44.431' W
Steeple Rock MF (Rough Patch Complex)	43° 28.500' N	122° 28.784' W

FC Point Type	Label	Comments	Latitude WGS84 DDM	Longitude WGS84 DDM
Aerial Hazard			43° 09.943' N	122° 52.852' W
Aerial Hazard			43° 09.969' N	122° 52.865' W
Aerial Hazard			43° 03.129' N	122° 38.774' W
Dip Site	Twin Lakes	Twin Lakes, approved	43° 13.742' N	122° 35.522' W
Dip Site	Hemlock Lake Dip	Hemlock Lake, approved	43° 11.285' N	122° 42.083' W
Dip Site	Lake in the Woods Dip	Lake in the Woods, approved	43° 13.008' N	122° 43.446' W
Dip Site	Calf Dip		43° 15.666' N	122° 37.841' W
Dip Site	Horseshoe Dip	Calf Dip	43° 17.494' N	122° 37.189' W
Dip Site	Apple Dip		43° 18.282' N	122° 40.630' W
Dip Site	Loletta Dip		43° 23.950' N	122° 26.001' W
Dip Site	Lemon Butte Dip		43° 29.000' N	122° 39.584' W
Dip Site	Gertrude Dip		43° 35.717' N	122° 32.484' W
Dip Site	Chilcoat Ridge Dip	No Tank	43° 24.317' N	122° 43.818' W
Dip Site	Red Top Dip		43° 04.940' N	122° 57.396' W
Dip Site	Dumont Dip	Type 2	43° 02.237' N	122° 48.471' W
Dip Site	Zinc Dip		43° 03.010' N	122° 47.036' W
Helibase	Strader Helibase		43° 19.100' N	122° 04.230' W
Helispot	Steamboat Helispot	T1, T2, T3 approved	43° 21.210' N	122° 43.730' W
Helispot	Tokete State Airstrip	T1, T2, T3 approved	43° 13.402' N	122° 25.237' W
Helispot	4	T2, T3, Dust Abatement	43° 19.902' N	122° 33.444' W
Helispot	5	T1, T2, T3 - Private Grass	43° 17.507' N	122° 35.269' W
Helispot	2	H2, T2 approved. RAWS site	43° 24.913' N	122° 34.670' W
Helispot	3	H3, T2 Approved	43° 23.838' N	122° 31.293' W
Helispot	1	H1, T3 approved	43° 20.668' N	122° 40.782' W
Helispot	8	H8, T2 capable. Hover hole.	43° 14.169' N	122° 42.626' W
Helispot	6	H6, T2 approved	43° 11.348' N	122° 30.142' W
Helispot	7	H-7, T3 approved	43° 10.600' N	122° 37.493' W
Helispot	11	H-11, T3	43° 15.322' N	122° 36.798' W
Helispot	15	H-15, T3	43° 12.842' N	122° 36.600' W
Helispot	20	only T-3 approved, needs	43° 13.833' N	122° 38.367' W
Helispot	9	only T-3 approved, 1 way	43° 16.505' N	122° 44.204' W
Helispot	10	Approved for T-3, by Air	43° 13.612' N	122° 34.934' W
Helispot	60	Needs approval- r/hart,	43° 31.436' N	122° 44.627' W
Helispot	70	Needs approval	43° 26.199' N	122° 46.380' W
Helispot	75	Approved by AOB/D Markason	43° 26.125' N	122° 42.891' W
Helispot	30	Approved by AOB/D Markason	43° 29.324' N	122° 33.368' W
Helispot	25	Slight slope down toward	43° 26.584' N	122° 26.710' W
Helispot	27		43° 29.055' N	122° 38.944' W
Helispot	50		43° 33.775' N	122° 40.171' W
Helispot	16	Gravel Pit	43° 07.275' N	122° 54.333' W
Helispot	15	Dirt Flat	43° 05.353' N	122° 55.914' W
Helispot	21	Boulder	43° 03.218' N	122° 46.569' W
Helispot	22	U Falls		
Sling Site			43° 14.706' N	122° 36.013' W
Sling Site		utilize hardpack, away from	43° 13.823' N	122° 35.307' W



Pilots Map
NW IMT 13 - CH
8/15/2021 - 24hr

North American 1983 Datum, Lat/Long Grid

Lat Long Grid:
Label Tick 5m, Large Tick 1m, Small Tick 10s

Jack Fire
OR-UPF-000265
23,648 acres at 08/14/2021 @ 2123

Rough Patch Complex
OR-UPF-000373
12,271 acres at 08/14/2021 @ 2123

● Dip Site	🏠 Lookout	H - Completed Hand Line	🚒 Foam Drop
● Mobile Retardant Base	🔥 Hot Spot - Spot Fire	R - Completed Road as Line	🚒 Retardant Drop
● Helispot	📍 Landmark	XXXX Planned Dozer Line	🚫 Temporary Flight Restriction
● Helibase	🏠 Water Development or Draft Site	⚡ Planned Fuel Break	🔥 Fire Edge
● Sling Site	🚚 Mobile Weather Unit	H - Planned Hand Line	🔥 Contained Line
⎓ Division Break	📡 Repeater	M - Planned Mixed Construction Line	🔥 Wildfire Daily Fire Perimeter
⎓ Branch Break	⚠ Hazard	R - Planned Road as Line	🚁 Helicopter Logging
👤 Incident Command Post	💧 Water Source	— Access or Improved Road	🚒 Aerial Fire Retardant Avoidance Areas
📍 Drop Point	🚫 Restricted Water Source	— Other	⚡ Utility Power Lines
🏠 Camp	🔥 Completed Burnout	— Repair Line	🚫 Sensitive Areas
📍 Staging Area	XXXX Completed Dozer Line	🚚 Escape Route	