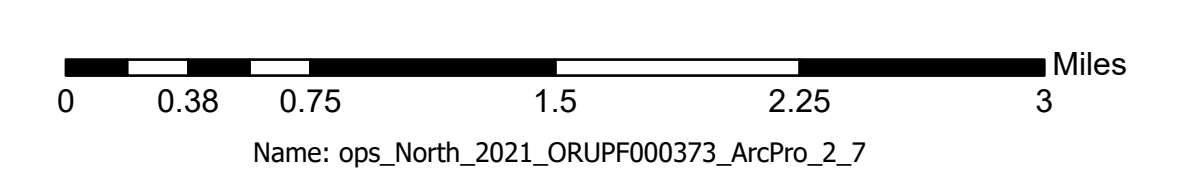


Jack Fire: 23,703Ac
Rough Patch Complex: 14,956Ac



<ul style="list-style-type: none"> Area Closure Structures Utility Power Lines Aerial Fire Retardant Avoidance Areas Dip Site Helispot Sling Site Division Break Branch Break Drop Point 	<ul style="list-style-type: none"> Closure Staging Area Hot Spot - Spot Fire Value at Risk Landmark Water Development or Draft Site Stream Crossing Mobile Weather Unit Repeater Hazard 	<ul style="list-style-type: none"> Water Source Restricted Water Source Completed Burnout Completed Doser Line Completed Fuel Break Completed Hand Line Completed Mixed Construction Line Completed Plov Line Completed Road as Line Access or Improved Road Fence Highlighted Feature 	<ul style="list-style-type: none"> Planned Doser Line Planned Fuel Break Planned Hand Line Planned Mixed Construction Line Planned Plov Line Planned Road as Line Planned Secondary Line Access or Improved Road Fence Highlighted Feature 	<ul style="list-style-type: none"> Management Action Point Other Repair Line Road Repair Escape Route Aerial Hazard Water Drop Foam Drop Retardant Drop Route 	<ul style="list-style-type: none"> LIAS Launch and Recovery Zone Jack Timber Sale Forest Service Roads Paved Road Gravel Road Dirt Roads Unimproved Roads Unspecified Closed Roads Call other values
--	---	--	--	---	--